

Full-time | MSc | 1 Year
Master Programmes

2025 - 2026

**LET'S
CHANGE
THE FACE
OF BUSINESS**

ROTTERDAM BUSINESS SCHOOL
Rotterdam University of Applied Sciences





Study in NL

Studying in the Netherlands means living in a friendly, tolerant, and open-minded country. These three elements are felt not just on a professional level, but also on a social and cultural level. Rotterdam is one of the biggest cities in the Netherlands with more than 180 nationalities, making Rotterdam and the Netherlands ideally suited for welcoming students who aspire to enrich their international knowledge.

ROTTERDAM UNIVERSITY OF APPLIED SCIENCES

Rotterdam Business School is part of Rotterdam University of Applied Science (RUAS). RUAS is one of the largest universities of Applied Science in the Netherlands. Currently over 40,000 students are studying at RUAS which offers over 90 undergraduate and graduate programmes. With 12 different schools throughout the city, we educate a diverse student population to enter professional careers, which will lead to working together with people of various cultures in an international environment.

PRACTICAL APPROACH TO EDUCATION

Rotterdam University of Applied Science offers a profession-orientated approach to learning. This is where you will learn to apply the knowledge you are being taught in class into an actual case study or business. It will prepare you for your professional career, we emphasise developing your hard and soft skills over various theories and models. Our lecturers have years of professional experience in multinational companies, and therefore can share their industry expertise. This combination of academic knowledge and practical experiences teaches you how theory is applied in practice through:

- A practical and profession-oriented approach
- Focusing on real-world examples
- Developing Skills and competencies
- Solving real problems

Living in Rotterdam

Rotterdam is diverse in every sense of the word. It is the perfect location to embark on your international study career. Whether your future aspirations lie in logistics, working with start-ups or big multinationals, Rotterdam has it all. Rotterdam is also known for its multicultural atmosphere; we host more than 65 nationalities at Rotterdam Business School. The city is a great environment for students, you can enjoy great culinary experiences, dive into a diverse art sector or go for a bike ride and relax in one of the many parks located in the city.



"Moving to the Netherlands has been eye-opening, teaching me resilience and adaptability while immersing in a vibrant academic and social scene."

- Gamze Kir



180 different nationalities living and working together



More than **2228** restaurants and bars



More than **1.600** start-ups & scale-ups



Biggest port in Europe

Rotterdam Business School

The world of business is experiencing rapid, profound change. According to Rotterdam Business School, this requires professionals with a hands-on approach who can respond flexibly and intuitively to national and international changes. These professionals recognise opportunities and can turn them into commercially attractive, efficient, and sustainable solutions.

MASTER OF SCIENCE AT ROTTERDAM BUSINESS SCHOOL

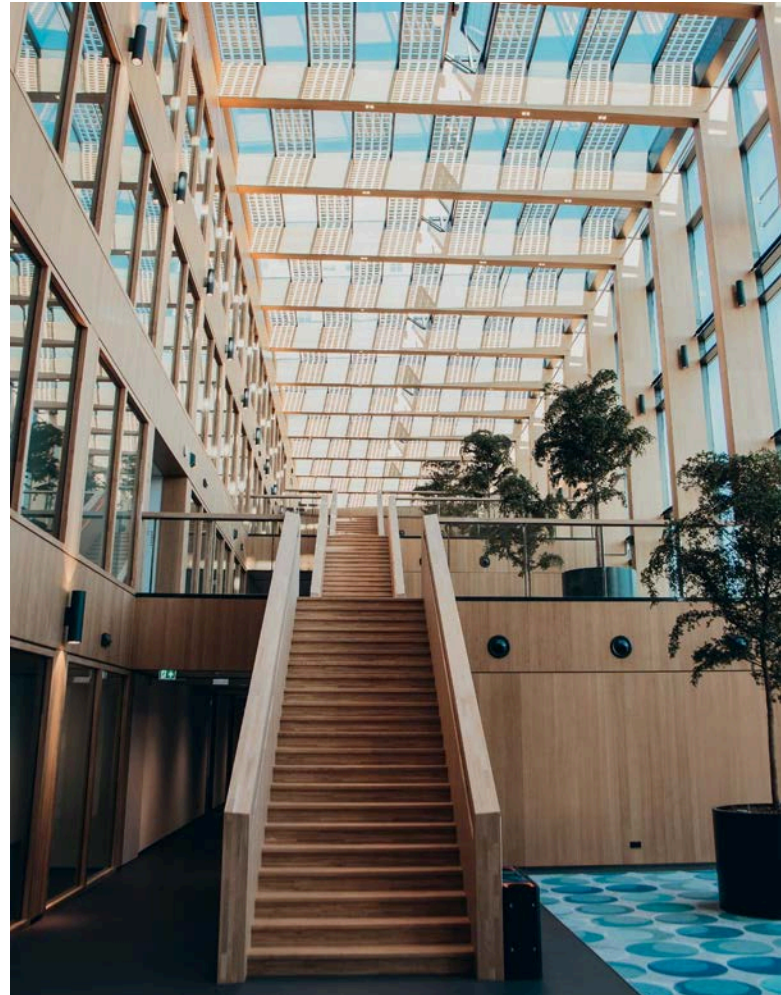
Our master's programmes are crafted to equip students for a thriving future, aiming to enhance their knowledge, skills, and expertise. Within our programs, you will delve into understanding global challenges and emerging trends, empowering you to make a change. Through immersive workshops, exercises, and collaborations with stakeholders, we facilitate hands-on problem-solving. Networking opportunities with industry leaders and experts abound, ensuring you gain the essential knowledge, skills, and mindset to emerge as a leader in your field.

FUTURE PERSPECTIVE OF MSC GRADUATES

Experience, between a year and a half, the **lowest unemployment rate**

More often hold a **permanent position**

Enjoy the **highest average income**



"I am expecting to pursue a career as a consultant, and after several years I plan to start my own business. This master has prepared me for real world business problems."

- Tim van der Plas

PROGRAMME STRUCTURE

The master programmes' curricula are thoughtfully designed to ensure a balance between contemporary business demands and fundamental knowledge. They encompass essential subjects such as project management and research, laying a foundation for specialised master-level topics. Throughout the program, students develop their personal leadership abilities through immersive experiences:

- Living Labs
- Pressure Cooker weeks
- Real-life company assignments.
- Company visits

PRE-MASTER

(6 MONTHS)



LET'S CONNECT EXPERIENCE
GROW EXPLORE ACHIEVE

Not quite ready for a master's programme or want to switch major? The Pre-Master is an ideal preparation programme for the English taught Master's programmes. The Pre-Master programme offers an intensive course to meet the needs of students with different educational backgrounds.

HOW DO WE PREPARE YOU?

The Pre-Master programme is designed to assist your general business development. The Pre-Master prepares you for our specialised master programmes. By taking classes such as Academic Writing and Presenting, Business Modules, Research and Specialisation courses you will have a solid foundation of business knowledge for your master studies.

You increasingly apply your knowledge throughout the course through presentations, writing business reports and working on projects. First taking part in an online simulation and concluding by working on projects with external companies.

Emphasis is placed on the value of teamwork, self-reflection, and personal development. This enables you to thrive in the master programme of your choice. After successfully completing the Pre-Master programme you will be admitted to the master programme at Rotterdam Business School.

LET'S ACHIEVE



**Elizabeth
Theodule**
Pre-Master

What are your plans after graduation?

I aspire to pursue a rewarding career in global logistics, utilising my expertise to optimise operations and enhance supply chain efficiency for multinational companies. My aim is to contribute to sustainable practices and deliver exceptional results in the ever-evolving international business landscape.

What did you enjoy the most about studying at RBS?

It was definitely the practical and hands-on approach of the programme, including real-world case studies and industry projects. Also, collaborating with diverse classmates which enhanced my learning experiences.

What is the most important thing that you have learned while studying at RBS?

Critical thinking and problem-solving skills, which have equipped me to make informed decisions and thrive in a dynamic business environment.

What tips would you give to future students:

Embrace practical learning, build a diverse network, seek internships and industry collaborations. Stay updated with industry trends, and balance academics with personal development. Don't hesitate to seek support when needed.



DURATION
6 months

INTAKE
February & September

SUBJECT OVERVIEW

Block 1

- Business Communication Skills I
- Personal Development I
- Research Methodology
- Business Simulation

Block 2

- Business Communication Skills II
- Personal Development II
- Research Methodology II
- Business Project
- Critical Thinking
- Specialisation Master

INTERNATIONAL SUPPLY CHAIN MANAGEMENT



**LET'S NAVIGATE COLLABORATE
INNOVATE SUSTAIN LEAD**

Do you want to take your knowledge of supply chain management to the next level? Are you looking to enhance your managerial and leadership skills? The 21st century Supply Chain Manager is not a master of one specific area in supply chain, but is a master in safeguarding the company's supply chain resilience and maximisation of sustainable business value.

OUR PROGRAMME

Our intensive one-year programme is specifically designed to equip you with the necessary knowledge, skills and attitude (KSAs) to excel as a supply chain manager and advance your career. Throughout the program, you will explore current global issues, emerging trends, and industry best practices, enabling you to effectively strategize and navigate complex supply chain operations.

Engaging in real-life case studies and collaborative projects with diverse student groups, companies and industry stakeholders (Project Management Living Labs), you will develop problem-solving abilities and design innovative solutions. Immersing yourself in this collaborative environment will deepen your theoretical and practical understanding of Supply Chain Management while enhancing your professional leadership capabilities. Upon completion, you will emerge as an expert in various functional areas of Supply Chain Management, fully prepared to confidently progress in your professional journey.

LET'S INNOVATE



YOUR FUTURE

As an MSC graduate, you will possess the aptitude to navigate through the complexities of the supply chain, ensuring its resilience and fostering long-term growth. You will demonstrate proficiency in the following areas:

- Implementing a comprehensive system approach to maximize the value of the supply chain effectively.
- Utilizing data-driven decision-making techniques to enhance operational outcomes.
- Showcasing expertise in complex problem-solving, and optimizing the supply chain from end to end.
- Demonstrating exceptional leadership skills and maintaining a professional attitude in the field of supply chain management.

MSC Curriculum (60 ECs)

Block 1	Block 2	Block 3 Operations &	Block 4
Supply Chain Management (4 ECs)	Integrated Supply Chain Planning (8 ECs)	Maritime Management (6 ECs)	Sustainability Pressure Cooker (3 ECs)
Supply Chain Innovation (4 ECs)		Supply Chain Management Simulation (4 ECs)	
Project Management Living Lab (6 ECs)			
Professional Leadership Development (5 ECs)			
Research Skills: SCMI (3 ECs)	Research Skills: SCM2 (3 ECs)		
Graduate Portfolio (14 ECs)			

*Subject to change.

CONSULTANCY & ENTREPRENEURSHIP

A young man with short brown hair, wearing a white long-sleeved button-down shirt and dark blue jeans, is walking on a balcony. He is looking off to the side with a slight smile. The balcony has a glass railing and a tiled wall. The background shows a blurred view of trees and a building.

**LET'S UNLEASH INNOVATE LEAD
THINK FORWARD MAKE IT HAPPEN**

The Master in Consultancy and Entrepreneurship will prepare you to navigate in a Volatile, Uncertain, Complex, and Ambiguous (VUCA) world by focusing on finding creative solutions to complex problems.

OUR PROGRAMME

MCE is a one-year full-time programme, which guides students to make the link between understanding management theories, concepts, tools and techniques and to apply them creatively in real-life situations. We practice a genuine 'Rotterdam hands-on and make-things-happen' approach which is our distinctive strength.

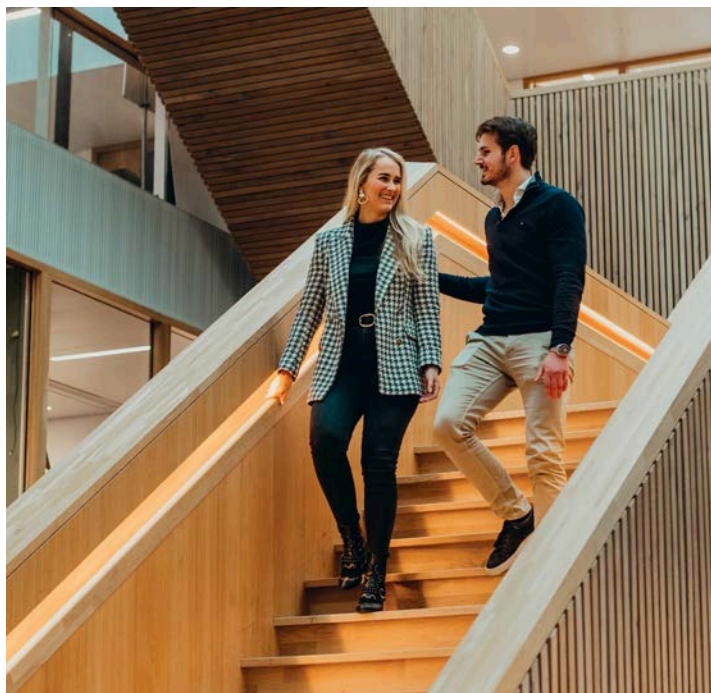
We have designed an experience-based programme with a strong emphasis on problem solving. It provides students with the opportunity to immerse themselves in live projects, solving real problems and identifying real opportunities.

LET'S UNLEASH

YOUR FUTURE

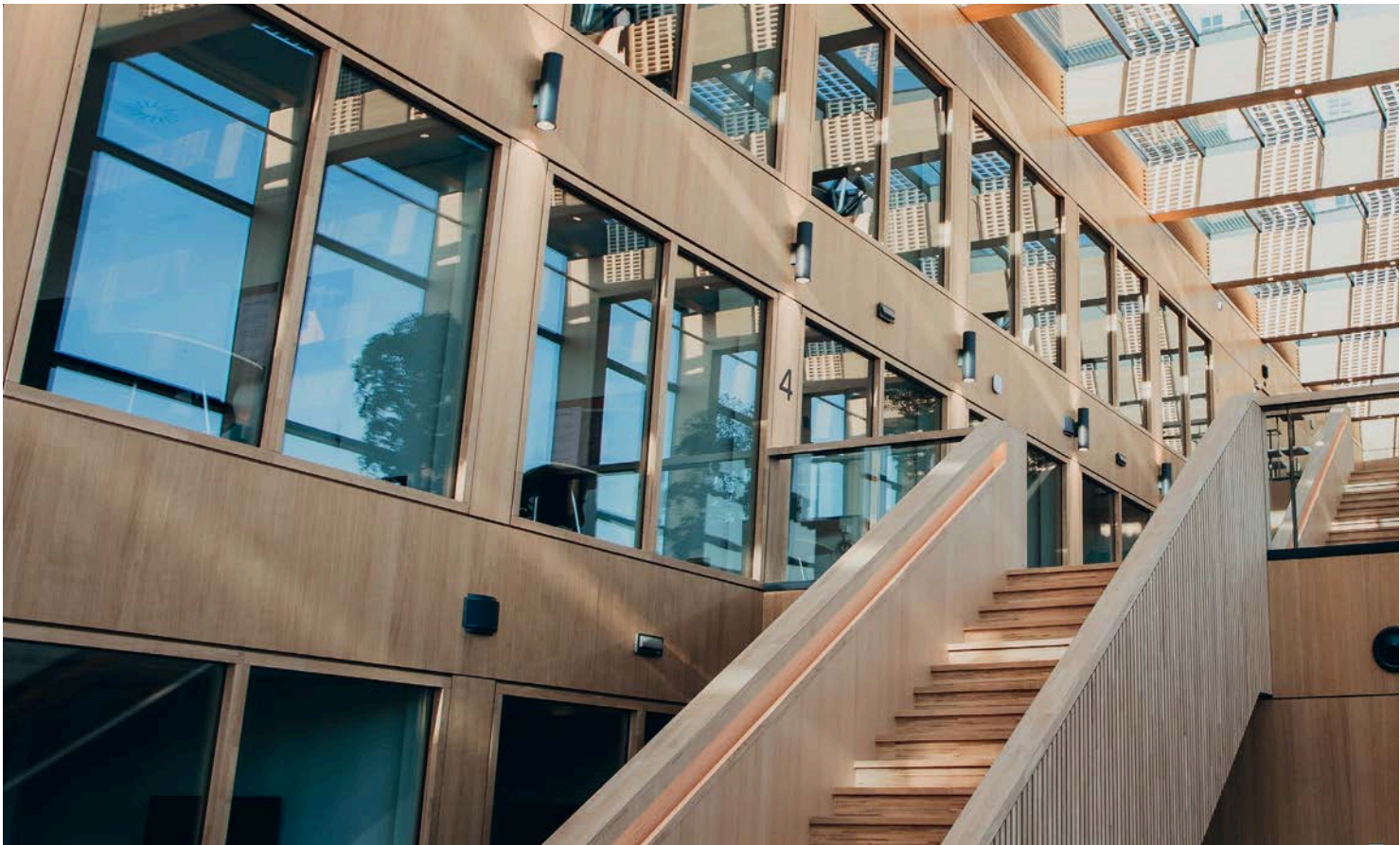
Graduates perform successfully as Management Consultants or Entrepreneurs:

- As a Business Consultant, you help organisations improve their performance and increase their success. You have a deep understanding of the client in their business environment, are capable of managing change processes and facilitating the formulation and evaluation of business strategies.
- As an Entrepreneur, you will take initiative in setting up or leading a business. You can transform ambitious but realistic strategies and long-term goals to the business operation. The alertness of the Entrepreneur leads to recognising opportunities waiting to be seized.



MCE Curriculum (60 ECs)			
Semester 1		Semester 2	
The Design Mindset (6 ECs)			
Business Solution Design (14 ECs)			
Research Design (4 ECs)			
Strategy & Innovation (6 ECs)			
Leading Transformation & Consulting (6 ECs)		Elective Activity/Module (3 ECs)	Elective Activity/Module (3 ECs)
Project Management (Living Labs) (6 ECs)		Elective Activity/Module (3 ECs)	Elective Activity/Module (3 ECs)
Responsible Business Management (SPC) (6 ECs)			BSR Defences

*Subject to change.



RBS GRADUATES & NETWORK

As Rotterdam Business School is part of Rotterdam University of Applied Sciences, industry and the work environment are key. Many of our programmes and the school itself have many links with companies relevant to each field. Many of our graduates go on to have very successful careers in various fields of work. The practical nature of our RBS education prepares students for the working world.





Ivan Cherviakov
Consultancy &
Entrepreneurship

What are your plans after graduation?

The next step in my career journey is to secure a job, ideally in a consultancy role where I can leverage my skills and expertise. I envision myself immersing in this role for a few years, gaining valuable experience and insights into various industries and organisational structures. Additionally, the prospect of entrepreneurship and starting my own business is something that I am interested in. Although, I have not the spark in which direction I would like to take my business.

What did you enjoy the most about studying at RBS?

What I enjoyed the most about the Master programme is that it truly challenged me to apply my professional skills to solve and address real-life business issues. The projects you work on are almost always in collaboration with real companies, stakeholders or clients. Offering me a comprehensive glimpse into consultancy or entrepreneurship in the real world.

What is the most important thing that you have learned while studying at RBS?

Everyone can have a form of leadership within them.

What tips would you give to future students:

Try to think really outside the box and actively participate in the projects. This is something that has brought me so much more in this master's program.



Micheala Phocas
International
Supply Chain
Management

What are your plans after graduation?

I want to explore opportunities within the Supply Chain field in Rotterdam and to make a global impact. It is an incredibly complex and challenging field, but I'm excited to work within such an interdisciplinary field in the largest seaport of Europe.

What did you enjoy the most about studying at RBS?

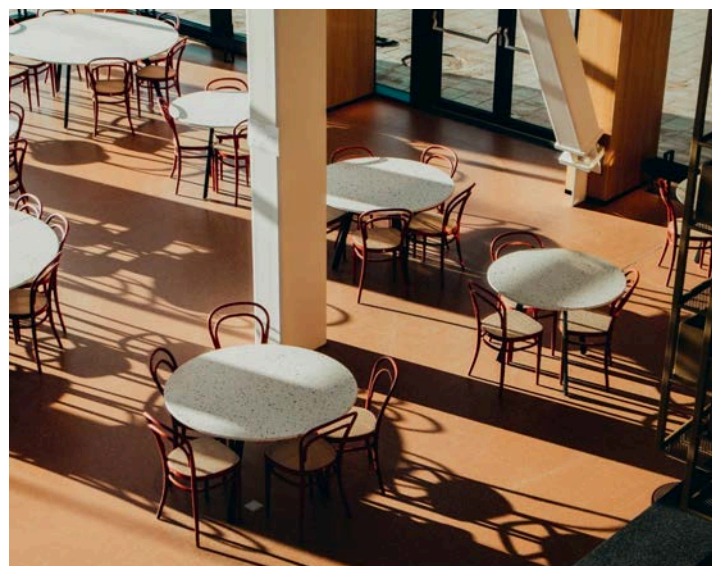
Our lectures are very knowledgeable, passionate, and have real-world expertise and have very applicable knowledge to share. Their classes often feel more like mentorship sessions rather than regular lectures

What is the most important thing that you have learned while studying at RBS?

This Master is future-oriented, and my entire perspective of Supply Chain has changed. I find myself questioning whether a Supply Chain is sustainable or how circularity could be brought into its operations instead of simply looking at its current performance.

What tips would you give to future students:

Time management is an essential during this master, and students should have an openness to meet and work with diverse groups of people from all over the world every day.



PRACTICAL & ENROLMENT INFORMATION

STEPS TO YOUR ENROLMENT

1. APPLY & REGISTER THROUGH [STUDIELINK.NL](https://studielink.nl)
2. Upload your application documents in Osiris Aanmeld. Original documents in German, French or Spanish are accepted. Documents in other languages need to be translated into English.
3. Within 4–6 weeks of registering you will receive an invitation to complete the next steps of your enrolment, this also includes a study programme check interview to talk about your motivation and answer questions you might have. After a positive evaluation you will receive the conditional admission letter. Your admission is finalised after we have received your original documents (payment & visa approved).
4. After payment, we will apply for your student visa on your behalf (only for non-EU/EEA nationalities).
5. Arrange your travel & accommodation (for non-EU/EEA only after receiving the travel visa).
6. Supply us with your original documents during introduction week and we will introduce you to the city and assist you with all required legal matters in Rotterdam.

INTAKE DEADLINES

September intake: non-EU: 1 April; EU/EEA: 31 Jul
February intake: non-EU: 1 Oct; EU/EEA: 31 Dec

MORE INFORMATION

Admissions and the programmes:
Centre of International Affairs (CoIA)

Admissions: coia-admissions@hr.nl
Phone: +31 10 794 62 51
Chat: rotterdamuas.com/chat

For information or questions related to living in Rotterdam and student life contact:

STUDENT AMBASSADORS

Email: coia-studentambassadors@hr.nl
Instagram: [internationalstudents_ruas](https://www.instagram.com/internationalstudents_ruas)
Facebook: Student Ambassadors of RUAS

ACCESSIBILITY

All Rotterdam University of Applied Sciences locations are accessible. A ramp or lift is available to enter the RUAS buildings. Most locations have special parking spaces. At every location you can find adapted toilets. Do you need extra support? Please always check in with reception so that they can help in case of an emergency, such as an evacuation. If you need specific facilities, discuss them first with a student counsellor. Together with your study programme, you can check what is possible at your location.

SPORT FACILITIES

As a student of RUAS you can use the sport facilities on the Erasmus University campus, which is right next door. Try one of the 50 different sports. More information can be found at erasmusport.nl

STUDENT SUPPORT

The Centre of International Affairs can assist you with several non-programme related matters.

INSURANCE

By Dutch law, all citizens of the Netherlands must be insured. For Non-EU applicants, this is also a requirement to obtain the student visa. EU-applicants need to check if their insurance also covers studying in the Netherlands. Student insurance includes healthcare, liability, legal aid, and household goods.

VISA/RESIDENCE PERMIT (non-EU/EEA only)

We arrange your study visa. Info: rotterdamuas.com/visa




UNIVERSITY STUDENT HOUSING (by SSH)

Rent is between € 475 – € 715 per month including gas, water, electricity, and internet. Bedding & cooking packages are optional. Reservations are on 'first come, first served' basis. Info: rotterdamuas.com/Student-Housing

CREDITS

Fotografie: DeGA Visuals. **Design:** Trichis.nl

FOLLOW US ON SOCIAL MEDIA

-  [/school/Rotterdam-Business-School-RUAS](https://www.linkedin.com/school/Rotterdam-Business-School-RUAS)
-  [/company/mcerotterdam](https://www.linkedin.com/company/mcerotterdam)
-  [/showcase/msc-master-in-international-supply-chain-management/](https://www.linkedin.com/showcase/msc-master-in-international-supply-chain-management/)

VISIT US



We offer open days, individual visits and webinars for you: www.rotterdamuas.com/meetus

LOCATION

Rotterdam Business School
Kralingse Zoom 91
3063 ND ROTTERDAM

