



# GLOBAL MBA

10 MONTHS  
FULL-TIME  
NICE



*Make an impact*

2025  
FR | EN

# LET'S COMMIT TO FUTURE GENERATIONS



The world is faced with major economic, societal, environmental and technological challenges. In line with the humanist tradition embedded in the vision of the School's founders, EDHEC's reason for existence, the desire to make a positive impact on the world, now drives our community even more passionately. Our strategic plan, activities and initiatives are all underpinned by the same ambition, namely **to work together for the benefit of future generations.**

## MOBILISING

Business is a powerful lever for global improvement that must be employed for the benefit of future generations. The climate and our planet require it. To this end, we are mobilising all the School's human, financial and technological resources so as to contribute as from today to improving the world of tomorrow.

## REINVENTING

Many of tomorrow's jobs do not yet exist. Technological developments such as those in artificial intelligence (AI) are remodelling businesses from top to bottom and offering hitherto unmatched potential for action. For young generations who aspire to careers with meaning, this progress provides a unique opportunity to make a positive impact. Our training programmes promote new ideas by opening up each student's academic horizons. Furthermore, we are very attentive to the desire for business creation and are continually on the look-out for innovations liable to transform business and the world in a concrete and positive manner.

## HUMANISING

The need to live together asserts itself more firmly every day. At a time when voices the world over are clamouring for greater inclusion, we believe that human potential can be multiplied by the respect for differences, recognition for all and self-fulfilment through knowledge and learning. Every day, we strive to reinvent the student experience in order to build understanding and act tangibly within our community to ensure that the common goal of every activity is reset to benefitting humankind.

EDHEC has stood out for over 100 years for its desire to improve the world and its ability to anticipate major transformations. Today, we are proud of our recognition every year as one of Europe's top 15 business schools; proud of our intense innovation in education, training and research; and certainly proud of staying true to our mission to **make a positive impact on the world.**

# DIVERSE AS THE WORLD, INDIVIDUAL AS YOU

## AN INTENSE AND INTERNATIONAL EXPERIENCE

The EDHEC Global MBA is an intensive programme designed to provide you with a highly personalised and truly international experience in under one year. We are proud to be consistently ranked as one of the most diverse and international MBA programmes from our cohorts through to our faculty and curriculum.

## A HIGHLY PERSONALISED PROGRAMME

With a choice of electives, a one-month specialisation track with learning expedition, and an 8-week tailored MBA project, you can shape your experience according to the career path you are aiming for. You can also choose to extend your EDHEC experience through internships and/or an academic exchange.

## A PROGRAMME FOCUSED ON YOUR FUTURE

The Lead360 personal & career development programme has been specifically designed to prepare you for the next step in your post-MBA journey and your future leadership career by helping you to develop the necessary skills and qualities you will need to drive your career and lead with confidence and conviction in an ever-changing, complex and diverse environment.

*"Leaders must develop the vision and skills necessary to lead their organisations to success. Our goal is always to bring out well-rounded, value-driven, inspirational and reflective leaders who make a positive difference to the business world."*



**Sandra Richez**  
EDHEC Global MBA  
Programme Director



### Global MBA rankings 2024



**#4**

Worldwide for ESG &  
Net Zero Teaching

**#7**

Worldwide for International  
Mobility

**#12**

Worldwide for Value  
for Money

**#57**

Worldwide overall



**#8**

Worldwide for Return  
on Investment



**#13**

Best MBA in Europe



**#15**

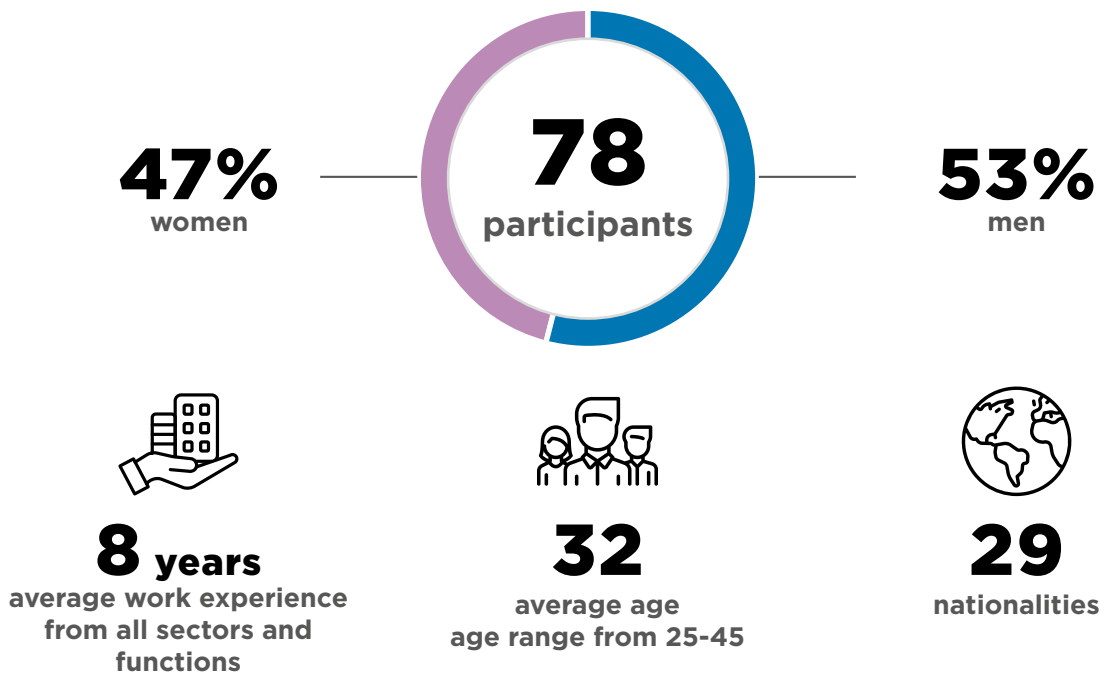
Best International MBA

# OPEN UP A WORLD OF NEW OPPORTUNITIES

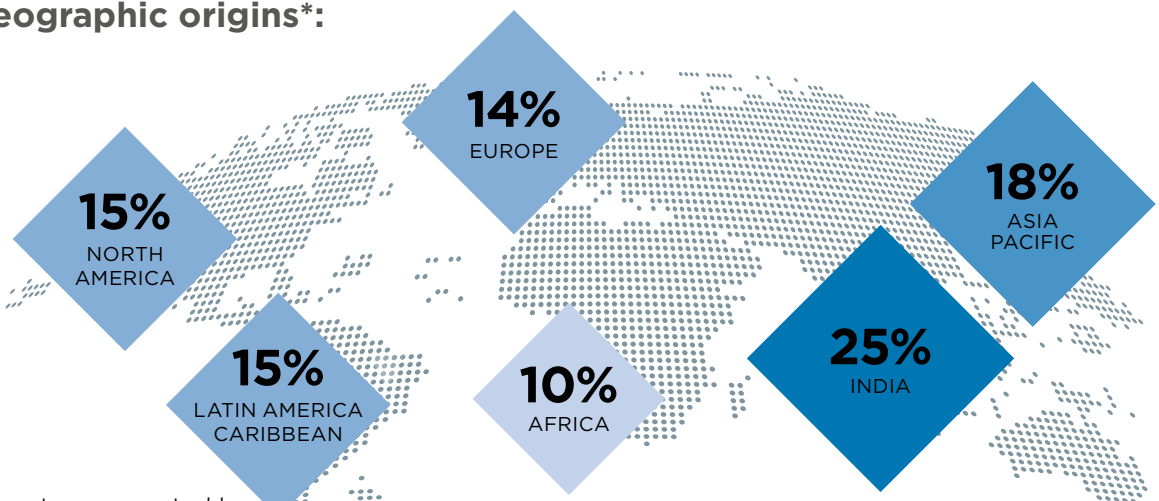
## A unique, diverse and international cohort

There is nothing typical or standard about our Global MBA class because we purposely seek to build a cohort which is diverse in every single way. As you spend 10 months working and studying with people from a wide range of nationalities, experience levels and professions, you'll be gaining wisdom from the experience, and sharing the wealth of knowledge that you and your fellow students have to offer.

### HERE IS A QUICK LOOK AT OUR CLASS OF 2024



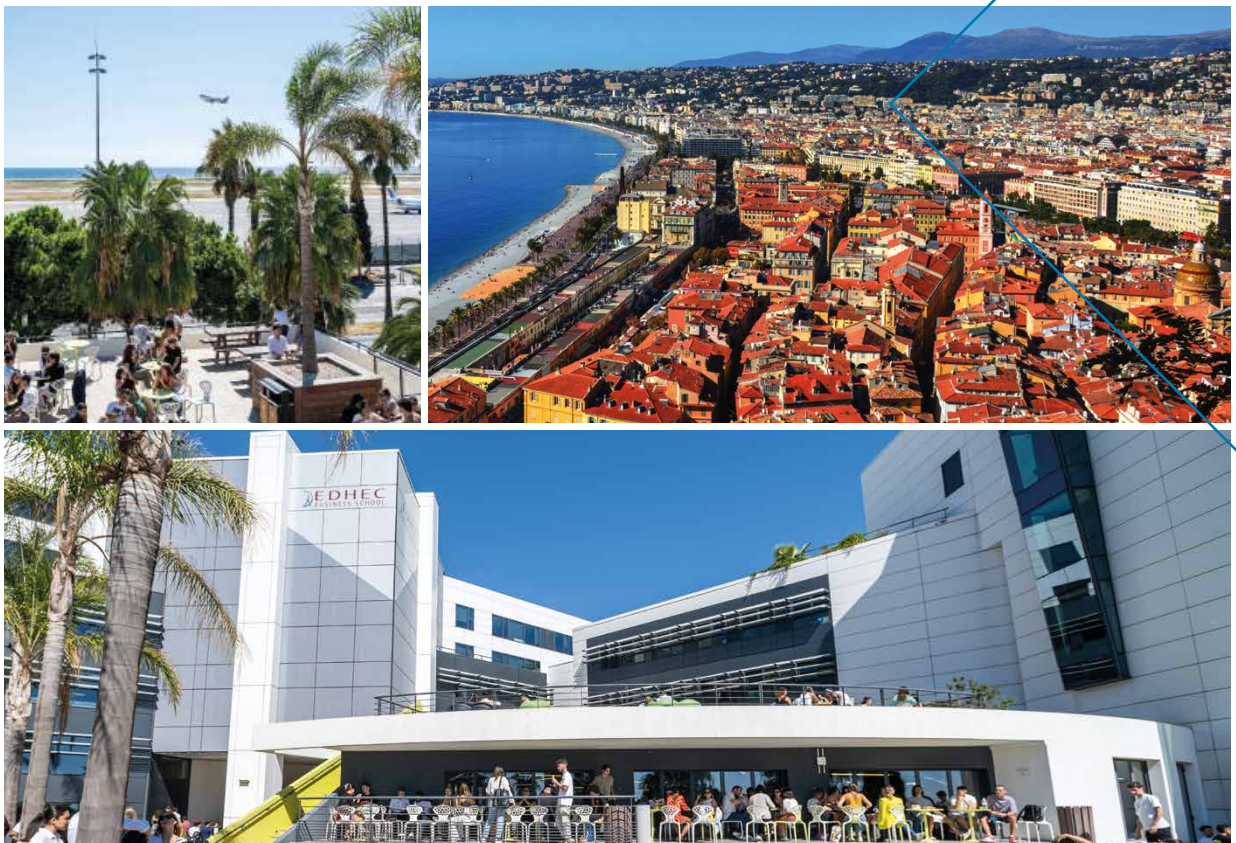
### Geographic origins\*:



\*Percentages may not add to 100 due to rounding

# AN EXTRAORDINARY EXPERIENCE DESERVES AN EXCEPTIONAL SETTING

A good study environment contributes significantly to a great MBA experience. EDHEC's campus in Nice is a modern building with rooftop decks overlooking the Mediterranean Sea, conveniently located next to Nice International Airport, just 15 minutes to the beach and the Arenas business district, and a 20-minute tram ride from the city centre.



## A MEDITERRANEAN CROSSROADS

With 300 days of sunshine per year, the climate in the south of France is ideal to enjoy the stunning location. Between the mountains and the sea, Nice offers numerous sports and tourist attractions on sand, sea and snow, a rich cultural life with more than 500 events each year, and a diverse international community.

Nice is a UNESCO World Heritage Site and combines the strengths of a world-class technology park (Sophia Antipolis) with the legendary culture, history and charm of the French Riviera and the proximity of Italy and the famous principality of Monaco.

## AN URBAN CAMPUS WITH A SEAFRONT SETTING

EDHEC's campus in Nice is located on the Promenade des Anglais and offers an academic environment that is unique in the world.

- **4 areas dedicated to sports, arts and student clubs**
- **20 lecture halls** including a main 350-seat amphitheatre
- **5 IT rooms, a language laboratory, a trading room, an e-learning space**
- **a 100m<sup>2</sup> business incubator**
- **3 restaurants**

# AN INTERNATIONAL, EXPERIENTIAL AND HIGHLY INDIVIDUAL PROGRAMME

## Your 10-month journey includes:

-  6 months of core **strategic foundation courses**
-  1 month of **electives**
-  1 month **specialisation track**
-  2 month **tailored MBA project**
-  **2 international learning expeditions**

-  5 months of **Sustainable Impact Challenge**
-  Personalised **Lead360 programme** throughout your MBA experience
-  Option to fast-track or to **extend your EDHEC experience** with an internship or international exchange
-  Optional free French lessons up to 30h per semester

### STRATEGIC FOUNDATIONS

During your first 6 months, gain a global business vision which allows you to understand and apply relevant strategic frameworks, ask the right questions and make informed, impactful decisions





### PERSONALISE YOUR PROGRAMME

Go deeper into your chosen field or develop new skills and perspectives with:

- **a choice of electives,**
- **a specialisation track,** and
- **a tailored MBA project.**

### LEAD WITH CONFIDENCE

The Lead360 personal & career development programme prepares you for the next step in your post-MBA journey and provides you with the necessary personal and leadership skills and qualities that you will need as you build your professional career.

SEPT	OCT	NOV	DEC	JAN	FEB	MAR	APR	MAY	JUNE	JULY-DEC
 <b>BUILD YOUR STRATEGIC FOUNDATIONS</b>						<b>PERSONALISE &amp; SPECIALISE</b>				 Extend your MBA experience through an internship or international academic exchange
						Electives	Specialisation Track & Learning expedition	Tailored MBA Project		
 <b>SUSTAINABLE IMPACT CHALLENGE</b>			Sustainable Learning expedition							
 <b>LEAD 360° - YOUR PERSONAL &amp; CAREER DEVELOPMENT PROGRAMME</b>										

# A PROGRAMME BUILT ON SUSTAINABLE IMPACT

At EDHEC, we ensure that your whole curriculum includes an **integrated learning journey encompassing sustainability, social impact and ethical & principled leadership** both in class and across the school.

## SUSTAINABLE IMPACT CHALLENGE

Working in teams, the 5-month Sustainable Impact Challenge encourages you to put into practise your MBA experience to tackle a real-life issue.

From defining together with your team the scope of your project, researching and knowledge-gathering through to pitching your final solution, the Sustainable Impact Challenge will put your teamworking, leadership and business acumen to the test.

From start-ups to global brands, each year a wide range of organisations join the Impact Challenge including businesses like **IBM, SAP, Somfy, Caisse d'Épargne** and **Kautex**.

## INSPIRING IMPACTFUL LEADERS

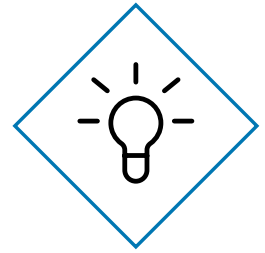
You will have many opportunities both in and outside the curriculum to develop your knowledge and experience on the key social, societal and environmental issues:

- **Sustainability Learning Expedition:** an immersive 1-week trip to explore how European businesses are leading and innovating on ESG strategies
- **Business-critical Issues:** Dedicated courses on key business issues including Climate Change & Carbon Pricing, CSR, Sustainability, Business Ethics, Sustainable Business Models, Diversity & Inclusion
- **An integrated learning journey:** In addition to a range of specific courses tackling key sustainability issues, our entire curriculum has been re-designed to integrate ESG into essential courses like Strategy, Finance, Supply Chain & Operations
- Option to focus on sustainability for your **MBA Project**



PERSONALISE, SPECIALISE

# TAILOR YOUR PROGRAMME TO MATCH YOUR GOALS



**Choose your specialisation track.**



## DIGITAL INNOVATION & AI TRACK

- Managing Innovation & Digital Transformation
- IBM AI & Digital Innovation: Design thinking, AI, Business transformation and use cases
- Digital Industry Acceleration Project
- Learning Expedition



## INTRA & ENTREPRENEURSHIP TRACK

- Innovating New Products & Services
- Building a Scalable Business
- Financing New Ventures
- Marketing New Ventures
- Learning Expedition



## INTERNATIONAL FINANCE TRACK

- Sustainable Finance
- International Corporate Finance
- Climate Change & Finance
- Learning Expedition



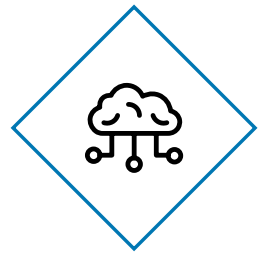
## GLOBAL LEADERSHIP TRACK

- Managing Innovation & Digital Transformation
- Positive Psychology of Leadership
- Managing Global Projects
- Learning Expedition

Courses and electives are subject to change as we continually refresh content to ensure business & societal relevance.



# CHOOSE THE BEST ELECTIVES FOR YOUR FUTURE



Our electives offer you a choice of intensive courses and skills-focussed modules designed to help you develop new, business-critical knowledge or extend your existing expertise. It is your MBA, so you choose the options which are best for your future.

Examples include:

**CASE STUDIES  
IN CORPORATE  
FINANCE**



**STRATEGIC MERGERS  
& ACQUISITIONS**



**CRIMINAL RISK  
MANAGEMENT**



**STRATEGIC  
FORESIGHT**



**DATA  
VISUALISATION**



**SALES & BUSINESS  
DEVELOPMENT**

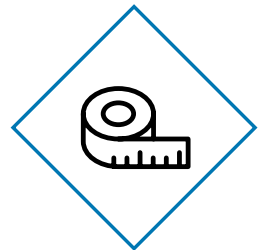


**DIGITAL  
MARKETING**



Please note that options may change and are subject to availability.

# PUT INTO ACTION YOUR NEW SKILLS WITH YOUR TAILORED 8-WEEK MBA PROJECT



**CONSULTING  
PROJECT**



**INTERNSHIP/  
JOB REPORT**



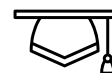
**BUSINESS PLAN**



**SUSTAINABILITY  
PROJECT**



**ACADEMIC  
EXCHANGE**



**THESIS**



# YOUR PERSONALISED CAREER & LEADERSHIP DEVELOPMENT SUPPORT

The **Lead360** personal & career development programme has been specifically designed to prepare you for the next step in your post-MBA journey and your future leadership career by helping you to develop the necessary skills and qualities you will need to **drive your career and lead with confidence and conviction in an ever-changing, complex and diverse environment.**

CREATING STRONG RELATIONSHIPS	DIVERSITY & INCLUSION	COMPELLING COMMUNICATION	BUILDING EFFECTIVE TEAMS	CAREERSMART™
1. Outdoor Team Building Seminar	1. Intercultural Awareness	1. Convincing Presentations: Seminar + Personalised Feedback Sessions I & II	1. Building Effective Teams Seminar	1. Intro to CareerSMART®
2. Connecting and Building Relationships			2. Team Work Review I	2. Essential skills: presenting self online, CVs and cover letters, goal setting
3. Initiating Relationships: Practical Skills for networking	2. Diversity: includes awareness of fault lines & biases, acting inclusively	2. Negotiation Skills	3. Team Work Review II	3. Advanced skills: networking, interview techniques, external mock interviews, salary negotiation



### LEAD 360 ELECTIVE WORKSHOPS: PERSONALISE YOUR DEVELOPMENT\*

- Agile leadership
- Boosting your leadership confidence
- Leading with humility
- Building resilience for stressful & demanding environments
- Power & influence



#### INTEGRATIVE LEARNING

- Assessed Case Exercise
- 360° assessment and group coaching

#### COACHING (PERSONAL, LEADERSHIP, CAREER)

- Career guidance and support
- Programme advice & Guidance

#### OPTIONAL FRENCH CLASSES

- Free French lessons up to 30h per semester

\* Electives may change and are subject to availability



*“Personal development, enhancing potential, developing talents... it’s all at the heart of the EDHEC Global MBA. Together with the personal and team coaching, MBA participants benefit from the expertise of professional counsellors in Finance, Career transition, Consulting, Entrepreneurship, Social Media, Technology, Strategic marketing and MBA Leadership Development Programmes.”*

**Spencer Hamilton**

Head of MBA Career & Corporate services

## AFTER YOUR EDHEC GLOBAL MBA

# A TRANSFORMATIONAL EXPERIENCE

Each year, we are proud to see our alumni begin their post-MBA journey across the world – our programme is an ideal opportunity to take your career in a new direction, whether this means changing countries, industries, functions or all three.



**81%**

changed location



**69%**

changed industry



**77%**

changed function



**78%**

work in Europe



**92%**

received a job offer within 3 months of graduation

**51%** made a triple jump  
(changed location, industry and function)

## CONNECTING CANDIDATES WITH COMPANIES

### GLOBAL MBA HACKATHON

The Global MBA hackathon offers an incredible opportunity to put your learnings and experience to the test to solve real-life issues for some of the world's biggest brands.

### JOB SHADOWING

Join a senior director or leader for a unique 5-day experience and see first-hand the complex role of leadership whilst demonstrating your capabilities and offering new insights and perspectives to make an impact.

### COMPANY CASE STUDIES, PROJECTS & PRESENTATIONS

From presentations and live in-class cases through to the Sustainable Impact Challenge, you will connect with different industries, sectors and organisations to give you maximum insights and exposure to help you identify your next career goal.

### NETWORKING

Fireside Chats, the MBA lounge and the Senior Speaker series provide you with the opportunity to gain leadership and expert insights on a wide range of topics including diversity and inclusion, sustainability, innovation, leadership and entrepreneurship

### COMPANY TREKS

Each year, we organise a series of company treks dedicated to specific industries or renowned business hubs which give you a unique opportunity to meet and hear from senior leaders and experts. Past examples include Amsterdam, Dublin, London and Paris.

### ALUMNI SPOTLIGHTS

Throughout the year, our alumni return to campus (in person or virtually) to share their experiences and provide insights and inspiration to help you make your next career move.

# EDHEC FOR LIFE

EDHEC Alumni network contributes to developing EDHEC's reputation worldwide and enhances its relationship with the global business community. As an EDHEC Global MBA participant, you automatically become a member of the EDHEC Alumni network for life.

## 57,000 ALUMNI AROUND THE WORLD TO STRENGTHEN YOUR NETWORK

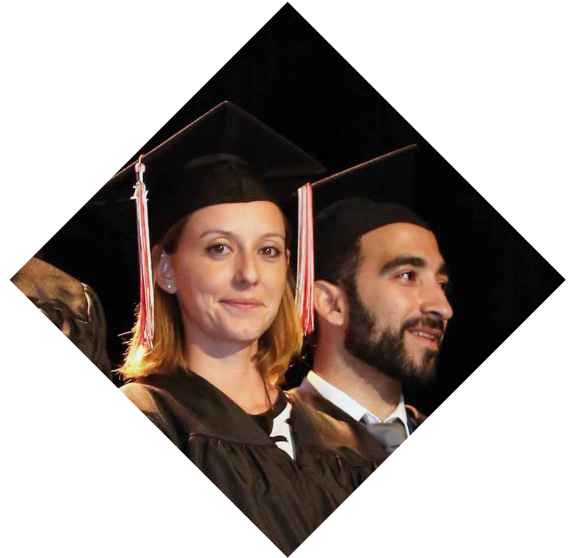
EDHEC Alumni Association links all generations of alumni in order to develop professional and personal links.

## 100 CLUBS IN MORE THAN 40 COUNTRIES

500 EDHEC Ambassadors coordinate professional clubs all around the world. These clubs drive local networks through numerous professional and social events.

## 450 EVENTS WORLDWIDE EVERY YEAR

EDHEC Alumni organises numerous events every year, creating strong ties between the different generations and extending the reach of the network to local decision-makers.



*"The network that you build during your MBA is incredible and the support, connections, advice and inspiration offered continues after you graduate as you are part of a truly global alumni family. As you develop your career, move to new countries, industries or even set up your own business, you know that you already have a business network and community to offer invaluable support to make your relocation or transition as smooth as possible. I am proud to be an EDHEC alumna and it's always really rewarding to be able to get involved with events and activities to help inspire the next generation of EDHEC MBA's."*

**Ksenia Sukhova**  
Global MBA Alumna,  
Manager, Baringa London

*"EDHEC helped me to understand who I really was and what I would excel at in life. It helped me to make the right decisions. There's an overall culture of agility at EDHEC; it really gave me the opportunity to make important decisions early in my life, decisions that still affect my life today."*

**Michael Burke**  
CEO of LVMH Fashion Group  
EDHEC Master Alumnus




## RESEARCH

# EDHEC FOR BUSINESS

As a driver of change for future generations, EDHEC strives to transmit knowledge that is useful — for students, for business partners, for communities — and that has the capacity to transform our society.

## RESEARCH WITH IMPACT

EDHEC's mission is to transform society through the education of future generations of leaders and innovators. The school devotes more than 20% of financial resources to research, a reflection on the central role research plays in the school's business model. EDHEC's students and business partners benefit from the contributions made by the school's research centres and the guidance they provide in terms of domestic and international decision-making.



*"It's our responsibility to ensure EDHEC's research resonates not only with the students in our academic programmes, but also with society. It's vital to be rooted in the real world, to use our knowledge to assist with future transformations, and to work relentlessly for change."*

**Michael Antioco, PhD**  
Dean of Faculty and Research,  
EDHEC Business School

## Research & areas of expertise



### Augmented Law

The EDHEC Augmented Law Institute provides cutting-edge research on the law and legal professions transformation, alongside hybrid training programmes, and a proprietary Legal Talent Management platform.



### Criminal Risks Management

The EDHEC Criminal Risks Management chair conducts immersive research into the impact of criminal organisation activity on businesses.



### Diversity & Inclusion

The Open-Leadership for Diversity and Inclusion chair is dedicated to improving diversity and inclusion in organisations.



### Family Business

The EDHEC Family Business research centre offers an holistic approach to family business.



### Foresight, Innovation & Transformation

The EDHEC Chair for Foresight, Innovation and Transformation, focuses on the development of companies' ability to embrace uncertainty.



### Infrastructure Investment

The EDHEC-Infrastructure Investment generates unique index data and analytics to measure the risk-adjusted performance of unlisted infrastructure investments, and benchmarks for infrastructure investors.



### Leadership Development

The EDHEC Leadership Development chair offers interactive learning methods to enable managers to develop responsible leadership skills.



### Management in Innovative Health

Launched in 2022, the Management in Innovative Health chair is a joint research chair with EDHEC and Bristol Myers Squibb to better understand the consequences of the digital revolution on the healthcare ecosystem and to advance e-health for the benefit of patients.



### New Generations

The EDHEC New GenTalent Centre studies generations Y and Z at work and acts as a laboratory for creating ties between recent graduates and companies.



### Sustainable Finance

The EDHEC-Risk Institute is a leading global academic think-tank in the field of investment solutions (pension crisis, ESG). This area of expertise is also covered by the EDHEC-Scientific Beta "Advanced factor and ESG investing" research chair.

The EDHEC Business School Association and its Foundation announce the signature of an agreement for the sale of a 93% interest in Scientific Beta to Singapore Exchange Ltd. The sale vindicates EDHEC's research-funding model and provides a lasting guarantee of the School's financial independence.

# TAKE THE NEXT STEP

Scholarships and financial aid can be critical factors when it comes to embarking on your MBA, so we aim to make the process as simple and transparent as possible. When you submit your basic profile/CV to our team, a recruitment manager will get back to you to explain the next steps, answer your questions and advise you on scholarships and financing.

## Total tuition fees: €52,500

These are the full tuition fees for September 2025 for the entire length of your Global MBA. Lifetime EDHEC Alumni membership is also included in your tuition fees. Flights costs for learning expeditions are additional.

## Scholarships

Our scholarships are guaranteed until the **31st January 2025** for the September 2025 intake. Scholarship amounts are awarded based on the strength of your overall application.

UP TO  
**-40%**

### EXCELLENCE

For candidates with GMAT scores or equivalent aptitude tests of 635 or above

UP TO  
**-40%**

### WOMEN IN LEADERSHIP

For inspiring women candidates with high leadership potential and a commitment to creating an equitable world

UP TO  
**-30%**

### MAKE AN IMPACT

For candidates with an ESG background, entrepreneurial project or demonstrated commitment to innovative & sustainable business

UP TO  
**-20%**

### CULTURAL DIVERSITY

For outstanding candidates from any country with international experience or ambitions. Only 3 scholarships per country available

## Honorary Awards & Fellowships

### THE SWATI KANSAL MEMORIAL SCHOLARSHIP FOR WOMEN OF IMPACT

This scholarship is generously funded in memory of Swati Kansal, 2019 EDHEC Global MBA graduate who made an outstanding contribution to her school as a highly engaged student, an MBA class representative, and President of the MBA Digital Innovation Club.

- One scholarship of €10,000 will be awarded per intake.

### EDHEC MBA FORTÉ FELLOWSHIP AWARDS

As a Forté Foundation partner school, we are proud to offer several Forté Fellowship awards of between €10,000 - €20,000 to support outstanding, high potential women candidates.

### THE EDHEC INTERNATIONAL ADVISORY BOARD FELLOWSHIP

The scholarship is funded by the EDHEC International Advisory Board (IAB), which is an international group of business and academic leaders who provide strategic guidance related to all aspects of the school.

Each year, the EDHEC IAB will support:

- The granting of one "MBA Fellow scholarship" of €5,000
- The granting of one "Honorable mention" of €2,000



# ADMISSIONS REQUIREMENTS

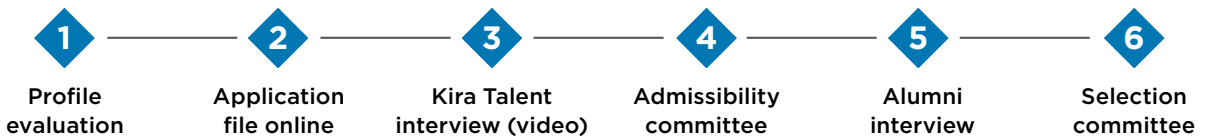
The culture at EDHEC's Global MBA is an important part of the experience, and we believe it's essential to have a personal admissions process to maintain it. Our recruitment team considers every candidate carefully, making sure that you're a good match for the programme, and that the programme is the right fit for you, too.

## GENERAL REQUIREMENTS

- **Bachelor's degree** or equivalent
- **Minimum of 3 years working experience**
- **Strong command of written and spoken English** with proof of level: TOEFL, TOEIC, IELTS, Cambridge qualifications (B2 First, C1 Advanced) and Duolingo are accepted (Test results must be less than 2 years old)
- **GMAT, GRE, Tage Mage, Executive Assessment or equivalent test.** Exemptions may be considered for: candidates who have a STEM-related degree or relevant professional qualification

Applications are evaluated holistically.

## ADMISSION PROCESS



We have a rolling admissions process and we strongly advise you to apply as early as possible to secure your place. On average the process will take around 3 weeks from the moment we receive your completed application file.

## Your contacts:



**Françoise Evangelisti**  
Italy, Latin America and India



**Julie Le Gouëz**  
France



**Nikki Harle**  
North America, Europe, Asia-Pacific and Middle-East



**Yulia Prokopiv**  
Europe and Africa

### EDHEC GLOBAL MBA RECRUITMENT & ADMISSIONS OFFICE

393, Promenade des Anglais, BP 311606202 Nice Cedex 3 - France

Tel: **+33 (0)4 93 18 45 66**

Email: [mba.admissions@edhec.edu](mailto:mba.admissions@edhec.edu)



**#7**

**Business School  
in Europe**

Financial Times 2023

**#5**

**worldwide for  
Open programmes**

Financial Times 2024

**#13**

**Business School  
in Europe**

Bloomberg Businessweek  
Best B-schools 2023/24

**8,600**  
Students

**57,000**  
Alumni in 140  
countries

**110**  
Nationalities

**175**  
International  
professors &  
researchers

*Make an impact*

**EDHEC.EDU**  
**mba.admissions@edhec.edu**

**LILLE**

24, avenue Gustave Delory  
CS 50411  
59057 Roubaix Cedex 1 – France  
Tél: +33 (0)3 20 15 45 00

**NICE**

393, Promenade des Anglais  
BP3116  
06202 Nice Cedex 3 – France  
Tél: +33 (0)4 93 18 99 66

**PARIS**

16-18, rue du 4 Septembre  
75002 Paris – France  
Tél: +33 (0)1 53 32 76 30

**LONDON**

10 Fleet Place, Ludgate  
London EC4M 7RB  
United Kingdom  
Tél: +44 (0)207 332 56 00

**SINGAPORE**

1 George Street  
#15-02 Singapore 049145  
Tél: +65 (0)6438 0030

