

**IU  
International**

**STUDY YOUR WAY**

[iu.org/partnerships](https://iu.org/partnerships)

**iu**

INTERNATIONAL  
UNIVERSITY OF  
APPLIED SCIENCES

# IU AT A GLANCE

# FLEXIBLE, INDIVIDUAL,

# INTERNATIONAL

When you're looking to start or develop your career, an accredited and internationally recognised degree is a great step forward. Together with our partners, we put huge emphasis on career-focused studies that give you the practical skills needed for top management positions in the industry of your choice. We offer Bachelor, Master, and MBA programmes with all the flexibility of studying on campus or online; it's up to you.

Online students enjoy the benefits of full-time or part-time studies and can freely schedule learning around any personal or professional commitments. Exams can also be taken online at any time. Of course, all IU study programmes, materials, and services meet high internal and external quality standards, which are regularly reviewed and updated.



## TRUSTED BY 130,000+ STUDENTS

The largest state-accredited German university and Germany's favourite online university.



## LARGEST INTEGRATED ONLINE DEGREE OFFERING

With 250+ degrees and 350+ non-degree courses, you are guaranteed to find a topic right for you.



## TOP QUALITY ACCREDITATION AND RECOGNITION

With a recommendation rate of over 97% and worldwide fully accredited according to German standards.



## STUDENT-CENTERED APPROACH

Online, blended and on campus study formats with on-demand student support.



## HIGH TEACHING STANDARDS AND CAREER-FOCUSED COURSES

Over 750 professors, tutors and trainers guiding students in practical application with up-to-date content.



## LARGE NETWORK AND SUPERIOR EMPLOYABILITY

Successful reputation with 10,000+ trusted international Partners. 94% of IU graduates are employed within 6 months.

## ACCREDITATIONS & RANKINGS



Online Learning



Member of  
Global Education Coalition  
launched by UNESCO





Reasons for IU

# WHY STUDY WITH US?

## 01

### MAXIMUM FLEXIBILITY

- Study online or on campus
- Full or part-time online studies
- Choose study location each semester!
- Balance studying with daily life

## 02

### WE SUPPORT YOU

- 24/7 online support
- Simpler admission processes
- Online forums & chats

## 03

### YOUR CAREER IN FOCUS

- Practical study content
- Career services & support
- Experienced professors
- Top name industry partners
- Boosted career prospects

## 04

### BROADENING YOUR HORIZONS

- English study content
- 2 campuses in Germany
- International student community
- Large alumni network

## 05

### OUR PROGRAMMES

- Online Certificates
- Bachelor, Master and MBA full degrees
- Wide range of study areas

# MAXIMUM FLEXIBILITY

## On campus or 100% online

With our roots in Bad Honnef, near Bonn, we have grown to serve 100,000+ students around the world. We maintain our original campus in Bad Honnef and also welcome students to our newer campus in the German capital of Berlin. You can choose if you want to learn with us on campus or take your degree fully online. Our highly rated online learning tools and teaching methods provide you with all you need to study comfortably from home. At home, travelling the world, or on site in Germany, so long as you can access our digital study materials, you choose where you want to study. Plus, you're free to change your mind regarding study models for programmes that are available both online and on campus.

## Ultimate freedom for your studies

We are proud to offer you flexibility in your studies with our combined on campus learning study model. For programmes with this flexible option, you can choose to start online and transfer on campus.

- Experience online learning and campus studies
- Experience a new city and campus life when you can

## Study online

### STUDIES IN THE COMFORT OF HOME

True to our international approach and digital core, we provide study programmes that are fully online to help you study when and where it is most convenient. Our digital, user-friendly learning materials and online support services give you the student experience with added flexibility to make studying suit your schedule. Wherever you are, you can gain an accredited and recognised degree while keeping up with work or family commitments.

All our online degrees are taught using digital, user-friendly learning materials and we provide many podcasts and eBooks for learning on the go. You can chat online with fellow students and your professors and access our online library for reading material.

- Learn on-the-go with podcasts, eBooks and our AI learning bot Syntea
- Chat online and receive remote coaching
- Take exams in a more relaxed environment
- Don't worry about visas, accommodation, or travel expenses
- Study alongside work and family commitments
- Demonstrate motivation and self-discipline to future employers

## IU is recognised by WES Canada and USA

IU graduates are able to work or study in Canada and the USA as the IU degree can be converted into points according to Canadian academic standards in the Canadian Immigration Point System and American Immigration assessment scheme.

## ON CAMPUS

We have two great campuses located in Germany: one in the busy, international capital Berlin, and one in a picturesque spa town outside of Bonn, near to Cologne. In terms of educational quality, Germany is considered one of top study destinations in the world and considered one of the best providers of education. A leader in innovation, business, and engineering, career prospects with a German degree are diverse and far reaching. Our university is at the heart of Germany with degree programmes accredited by the country's educational standards agencies.

- Benefit from a more structured way to learn
- Head to the library or study rooms to concentrate
- Experience a new city and the German lifestyle
- Study and network with international students in person
- Take advantage of on-site facilities and dining options
- Join sports clubs and associations

### BERLIN CAMPUS

#### INTERNATIONAL CAMPUS IN THE GERMAN CAPITAL

Dynamic, progressive Berlin is set to become Europe's leading start-up hub and entrepreneurial capital. With a multinational population of around 3.76 million, the city is a powerhouse for networking and collaboration. The campus is located in the heart of Berlin, with around 2000 students studying in the cultural hotspot. Students have access to libraries and facilities across the city and we are happy to support in finding accommodation.



### BAD HONNEF CAMPUS

#### A NEW HOME ON THE RIVER RHINE

The picturesque town of Bad Honnef is located in North Rhine-Westphalia, one of Germany's most beautiful regions. It offers amazing scenery, and the cultural centres of Cologne and Bonn are nearby (30 minutes by train). Our campus offers the most modern facilities housed in a mixture of historic and contemporary buildings. There is WiFi across campus, bars and restaurants for students to relax, and many sports clubs and societies for students to join. With our on-campus accommodation, students at IU quickly feel at home.

# OUR STUDENT OFFICE SUPPORTS YOU

## Student office

We want you to feel comfortable and prepared during your studies to ensure you graduate successfully and head straight into a great career. Your Student Office helps you find the support and services you need. Plus, the International Office is the first point of contact for incoming or exchange students. Whether you're moving to Germany to study or joining an exchange programme at a partner university, the team can provide you with information and support in finding the right documentation or contacts.

## Connected, even from far away

Exchange ideas on study content on our online campus in chats and forums, work together using study wikis, or organise group work using our tools. Access all you need in your online learning environment and contact your professors over chat to schedule appointments. And, contact the Student Office and our team whenever you need support for your studies or personal advice.

## Support That's Individual to You

We support you in a range of ways, from scholarships to academic support in online learning, as well as career services. We're here to ensure every student feels comfortable and can fulfil their potential.





# YOUR CAREER IN FOCUS

## BUILDING YOUR CAREER

We know that employability after graduation is very important to our students. Our international Career Office assists students in reaching their career goals. In fact, 94% of our graduates start careers within six months of graduating. Through individual consultations, workshops, networking opportunities and access to our exclusive job database, we will support you in finding a great position after graduation.

## INVEST IN YOUR FUTURE

**94%** of our graduates have a job within six months of graduation.

**75%** of our graduates work in an international environment.

**80%** of our graduates move into a management position within two years.

## CAREER OFFICE

The corporate world is looking for globally oriented professionals and motivated graduates. Take advantage of our excellent reputation in academia, extensive partner network, and individual support to build a successful career. Our team of professional advisors and educators support you with your search for internships, job placements, and events. We organise company presentations on campus, carry out applicant training and interview coaching, review your applications, and offer you advice to ensure you have every chance to boost your career.

Our professors have a minimum of 5 years' industry experience and help you develop practical and relevant skills.

# BROADENING YOUR HORIZONS

## WELCOME TO GERMANY: POST-STUDY VISA

In Germany, skilled professionals are in high demand and around 20% of the German population has a migration background. The country is welcoming to educated immigrants and offers the EU Blue Card scheme for residency. Additionally, post-study visas are available: If you choose to carry out your last semester in Germany, you have the chance to remain in the country for 1.5 years after graduating to search for a job. You will need to find employment that has adequate compensation and is in the professional area relating to your completed studies.

## BUILD YOUR INTERNATIONAL NETWORK

We're proud to have an ever-expanding community of international students and alumni, a network of 10,000 partner institutions, and 650+ Professors, lecturers & employees. We continue to grow and grow, and as we do your network grows, too. You can lean on our large community during your studies for extra support and advice and make long-lasting connections that could turn into profitable career partners for your future.

## All programmes taught in English—the international business language

All studying content and teaching at is in English, widely recognised as the international business language. This can help boost your career prospects internationally once you graduate.

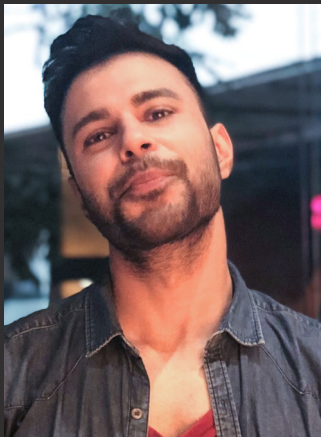




# HOW OUR STUDENTS USE THEIR IU DEGREE

“After graduating from IU, I secured a position as Senior Architect with PMS AG. In both my passion and my career, the skills and competencies I learned during my MBA at IU have made a big difference in wide variety of ways.”

**Zena Massaad, MBA**



“The faculty at IU supports students in every way possible and the study environment provided me with immense opportunities to succeed. I took one semester online as I needed to resolve a few things back in India, like my previous job and family matters. This also helped me reduce my costs further, on top of the already affordable tuition fees that IU offers.”

**Guarav Dey, MBA (Big Data Management)**

“After I graduated, I took on a role with a German real estate company, working in a variety of marketing disciplines. IU really equipped me with all the essentials for formulating strategies and visions for the marketing campaigns. After working in that position for three years, I decided to strike out on my own and kick-start my own business challenge!”

**Mai Chi Lo, MBA (International Marketing)**



# MEET OUR PROFESSORS

At IU we believe that the key for building high quality study programmes is having a high quality teaching staff. We have over 750 professors, tutors and trainers who meet our high standards by having an excellent academic reputation, subject specific expertise, practical experience and a strong international approach.

## IT & ENGINEERING



**Prof. Dr.-Ing. habil. Matthias Eifler, M.B.A.**  
Professor for Robotics



**Prof. Dr. Alexander Lawall**  
Professor for Cyber Security



**Prof. Dr. Thomas Zöller**  
Professor for Data Science

## MARKETING & MEDIA



**Prof. Dr. Anne-Kristin Langner**  
Professor for Social Media



**Prof. Dr. Nele Hansen**  
Professor for Media Management

## FINANCE & MANAGEMENT




**Prof. Dr. Jessica Hastenteufel**  
Professor for Business Administration



**Prof. Dr. Mirko Bendig**  
Professor for International Management



**Prof. Dr. Gerhard Sälzer**  
Professor for Finance & Accounting



Study online

# FULL DEGREES

## BACHELOR LEVEL

Programme	ECTS Credits	Online	On Campus
Business Administration B.A.	180	×	×
International Management B.A.	180	×	×
Digital Business B.A.	180	×	
Entrepreneurship B.A.	180	×	
International Healthcare Management B.A.	180	×	
Hospitality Management B.A.	180	×	
Aviation Management B.A.	180	×	
Management B.A.	240	×	
Data Science B.Sc.	180	×	
Computer Science B.Sc.	180	×	×
Business & IT B.Sc.	180	×	×
Industrial Engineering & Management B.Eng.	180	×	×
Engineering B.Eng.	180	×	
Robotics B.Eng.	180	×	
Cyber Security B.Sc.	180	×	×
Applied Artificial Intelligence B.Sc.	180	×	×
Industrial and Organizational Psychology B.Sc.	180	×	
Applied Psychology B.Sc.	180	×	
Software Development B.Sc.	180	×	
Cloud Computing B.Sc.	180	×	

Marketing B.A.	180	×*
AI in Business B.Sc. (Majors in: Finance, Transport & Logistics, Human Resources, Marketing & E-Commerce, Digital Marketing & SEO, Production, Sales & E-Commerce, Healthcare & Pharmaceuticals)	180	×*

## MASTER LEVEL

Programme	ECTS Credits	Online	On Campus
Management M.A. (Majors in: Big Data, Engineering, Finance and Accounting, International Marketing, IT)	60	×	×
Marketing Management M.A.	60/120	×	
International Management M.A. (Majors in: AI & Robotics, Big Data Management, International Marketing, Finance & Accounting, IT Management, Engineering Management)	60/120	×	×
Finance, Accounting and Taxation M.Sc.	120	×	
Human Resource Management M.A.	60/120	×	
International Healthcare Management M.A.	60/120	×	
Innovation and Entrepreneurship M.A.	120	×	
Project Management M.A.	60/120	×	
Digital Marketing M.A.	60/120	×	
Business Intelligence M.Sc.	60/120	×	
Business and IT M.Sc.	60/120	×	
Digital Innovation and Intrapreneurship	60	×	
Data Science M.Sc.	60/120	×	×
Cyber Security M.Sc.	120	×	×
Computer Science M.Sc.	120	×	×
Artificial Intelligence M.Sc.	60/120	×	× (120)
Engineering Management M.Eng.	60	×	×
Information Technology Management M.A.	60/120	×	
Data Management M.Sc.	60/120	×	
Growth Hacking for Entrepreneurs M.A.	60	×	
Industrial and Organizational Psychology M.Sc.	60/120	×	
Growth Hacking M.A.	120	×	
DevOps and Cloud Computing M.Sc.	60/120	×	
Product Management M.A.	120	×	
Applied Artificial Intelligence M.Sc. (Majors in: Healthcare, NLP, Production, Marketing and E-Commerce, Supply Chain Management)	60	×	
Software Engineering M.Sc.	120	×*	
Machine Learning M.Sc.	120	×*	
Digital Product Management M.A.	60	×	

## MBA LEVEL

Programme	ECTS Credits	Online	On Campus
Master of Business Administration	60	×	×
Master of Business Administration (Majors in: Big Data Management, Engineering Management, Finance & Accounting, IT Management, International Marketing, Artificial Intelligence, Human Resource Management, Innovation & Entrepreneurship, Health-care Management, Supply Chain Management, E-Sports Management, Salesforce)	90	×	×

