



In parallel to the compulsory courses of their respective Master's programs, students undertake their research project related to **Ecosystems**, Environment, Raw Materials, Energy, and Society nexus. They validate the Terra Thematic Program modules:

- M1: “ **Field trip** ” (3 ECTS): 3 days along the Rhone river and the Massif Central Mountains to discover the environmental footprint of human activities (energy production, raw material extraction, urbanism)
- M1: “**Growth and Planetary Limits**” (3 ECTS in English): The goal of this module is to introduce students to the energy and environmental issues raised by the modern quest for economic growth and to map out the potential of the ecological transition.
- M2: “**Environmental observatory**” (3 ECTS): A 2-year-long program of learning by doing research, where students enroll into environmental monitoring research activities.
- M2 : “**Summer School: Mountains in a changing world**” (3 ECTS): This innovative program brings an interdisciplinary approach to the complex question of how climate change in mountainous regions affects both humans and nature.
- M2 : (optional) : “**Green University**” (3 ECTS in French) : 2 intensive weeks of lectures and workshop on Climate Change and Political Action

### LABORATORIES (UGA, CNRS, CEA)

- ISTerre
- IGE
- LECA
- PACTE
- LARHRA

### More information about Terra

➤ <https://www.univ-grenoble-alpes.fr/education/graduate-school/terra-1024213.kjsp?RH=1626702057626>



*This project is supported by the French National Research Agency (ANR-20-SFRI-0007) under the "Investissements d'avenir" programme*



[https://enquetes.univ-grenoble-alpes.fr/SurveyServer/s/dgdfvu-sve/Graduate\\_school/questionnaire.htm](https://enquetes.univ-grenoble-alpes.fr/SurveyServer/s/dgdfvu-sve/Graduate_school/questionnaire.htm)



## What is Terra ?

We will train the next generation of natural resources managers, whether they are geologists, hydrologists, climatologists, ecologists, sociologists or economists, to risks and opportunities in the energy transition in Europe.

We will particularly focus on the social and environmental challenges associated with the **ecological and energy transitions**, and will develop new tools and practices to gain the **Social Licence to Operate**, for ethical sourcing and the traceability of raw materials, **develop Nature Based Solutions**, establish industry alliances as a key mechanism towards sustainable and secure supply of raw materials. Our general strategy will rely on strong disciplinary backgrounds in the master's programs participating in the program, and provide hands-on interdisciplinary experiences, and the possibility of course exchanges to favor pluridisciplinarity.

The **Graduate School program Terra works with both research labs and Master's programs.**

Students should first be enrolled in one of the Master's programs listed below.

In addition to the Master's curricula, the Graduate School program offers a selective training of excellence through research. Every master student belongs to a laboratory and performs a **2-year-long research work** under the guidance of a research director.

### Affiliated MASTER PROGRAMS

- **Urban Planning and Management : Territorial Development and Transition**
- **History; society, environment, territories**
- **Political Sciences: Ecological Transitions**
- **Biodiversity Ecology & Evolution (BEE)**
- **Earth Sciences (STPE)**
- **Resources, Environments and Society (RESET)**
- **ENSE3 (INP)**

## Training through and for research

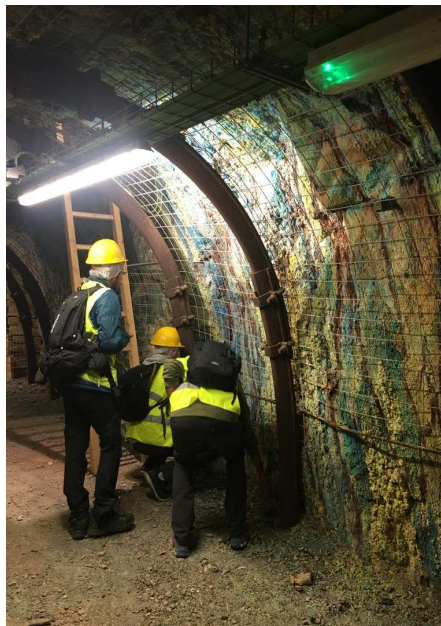
### A FIRST PROFESSIONAL EXPERIENCE

The Graduate School program Terra provides opportunities to be immersed in a highly competitive scientific environment.

It also gives students a first professional experience. From the beginning of their master's, students become members of a laboratory or research institute, take full part in the life of the lab according to their time of presence, and have access to high-tech facilities after having received appropriate training.

### A RESEARCH-ORIENTED TRAINING

Students develop their research project during the next three semesters either full-time or in addition to their course work.



At the end of the 2<sup>nd</sup> year, they are evaluated through the submission and defense of a Master's Thesis.

## Admission & Curriculum

The Graduate School Terra is open to students having completed a 3-year Bachelor's of Science in Earth and Environment sciences, Biology/Ecology, Political Sciences, History or Urban Planning and Management. Students who hold a three-year Bachelor's degree in any other discipline and who have excellent academic results can also apply to the GS Terra.



### SCHOLARSHIPS

The Graduate School of UGA offers Master's scholarships on a competitive basis to students who have obtained their high-school degree outside of France and are enrolled in one of the Thematic Programs of the GS.

### INTERNSHIPS

During their research internship students receive a stipend of an amount set by French law.

### INTERNATIONAL POSITIONING

- International recruitment forum at the Bachelor's level
- All courses are in English
- Students participate in field trips with other international students