



university of  
 groningen

2022 entry

# International Guide

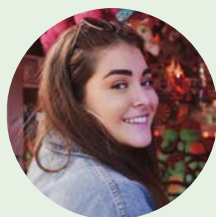
open academic community – since 1614

# Welcome



## Meet the bloggers!

Discover more about student life and studying at the UG first hand from our student bloggers.



### Ariana

Hi! My name is Ariana, I'm a 22-year-old Costa Rican student, and I am currently completing my Bachelor's in Media Studies.



### Luc

Hello! My name is Luc, I'm 22-years-old and come from sunny South Africa! I am currently a third year student of International and European Law.



### Avital

Hi there! My name is Avital and I'm Israeli/Dutch. After completing my Bachelor's in Linguistics at the UG, I'm now doing the Master's in Applied Linguistics (TEFL).

## Admissions information

For information about a particular programme, contact the relevant faculty or visit the website programme page.

Bachelor's:

[www.rug.nl/bachelors](http://www.rug.nl/bachelors)

Master's:

[www.rug.nl/education/master](http://www.rug.nl/education/master)

## Other ways to find out more

Our guided visits include a tour with a current student and the opportunity to meet with someone from your chosen faculty.

To book a visit, contact us at

[prospectives@rug.nl](mailto:prospectives@rug.nl)

## International visits

Find out where you can meet us in your country or at an online or virtual event. [www.rug.nl/meetus](http://www.rug.nl/meetus)

## Chat with a student

Do you have a question about studying at the University of Groningen, about one of our programmes or about student life in Groningen or Leeuwarden?

Send a message to one of our current students and they will be happy to answer all your questions and help you on your way!

[www.rug.nl/education/chat-with-our-students](http://www.rug.nl/education/chat-with-our-students)

## UG student blog

Discover more about student life and studying at the UG first hand from our student bloggers.

[www.rug.nl/education/student-blog](http://www.rug.nl/education/student-blog)



[www.rug.nl](http://www.rug.nl)



University of Groningen



[universityofgroningen](https://www.instagram.com/universityofgroningen)



University of Groningen



[@uniofgroningen](https://www.tiktok.com/@uniofgroningen)

## Autumn 2021 and Spring 2022

### Web classes

Online taster courses for  
Bachelor's applicants.

More information:

[www.rug.nl/webclasses](http://www.rug.nl/webclasses)

## 12 November 2021

### Bachelor's Open Day

A week of information sessions  
for prospective students who  
want more information about our  
Bachelor's degree programmes.

## 22–26 November 2021

### Online Master's Week

A week of information sessions  
for prospective students who  
want more information about our  
Masters's degree programmes.

More information:

[www.rug.nl/mastersweek](http://www.rug.nl/mastersweek)

## 4 February 2022

### Bachelor's Open Day

A week of information sessions  
for prospective students who  
want more information about our  
Bachelor's degree programmes.

## March 2022

### Master's Day

Information event on our Master's  
degree programmes.

## 23 April 2022

### Bachelor's Open Day

Open Day for prospective  
students who want more  
information about our Bachelor's  
degree programmes.

More information:

[www.rug.nl/opendays](http://www.rug.nl/opendays)

## Content

Facts & figures	2
Studying in the Netherlands	4
Life at the UG	8
Our locations	10
Groningen	10
Leeuwarden	14
Accommodation	16
University fees and living costs	18
Supporting you	22
Life beyond study	24
Advancing your career	26
Groundbreaking research	28

## BACHELOR

Studying a Bachelor's at the University of Groningen	30
English-taught Bachelor's degrees	32
How to apply to a bachelor's degree programme at the University of Groningen	34

## MASTER

Studying a Master's degree at the University of Groningen	36
English-taught Master's degrees	38
PhD/Graduate Schools	46
How to apply – Studielink	48











**Founded in 1614**

**Over 180 English-taught  
degree programmes**

**Youngest city in  
the Netherlands**

**Nurtured 4 Nobel  
Prize Winners**

**60,000 students in  
Groningen**

**150,000 alumni  
worldwide**

**Over 25% international  
students from 139  
countries**

**21 alumni chapters  
globally**

**One of the top 100  
universities in the  
world**

**64th in the world**

– ARWU Shanghai Ranking (2021)



# Studying in the Netherlands

---

There are two main types of universities in the Netherlands – research universities and universities of applied sciences. Research universities, such as the University of Groningen, offer highly academic, research oriented programmes that focus on specific subjects. Universities of applied sciences are more professionally oriented and designed for those looking to enter a particular career upon graduation.

## Research universities

There are fourteen research universities in the Netherlands. A bachelor's programme usually takes three years to complete and typically does not include work experience, with master's programmes lasting one or two years. You will be studying a range of subjects before you specialise and, although the emphasis is on academic study in a research environment, our graduates forge successful careers both within and outside the research community.

## University of Groningen

The University of Groningen is among Europe's top institutions in the field of academic research, with the internationally renowned, ground-breaking research undertaken by our staff contributing to all areas of society. By choosing to study at the University of Groningen, you will be joining a well-established, globally networked community where you are encouraged to take the initiative through independent study and research.

Our degrees are designed to encourage you to think independently and develop your own opinions at an early stage in the study programme. Active learning methods are not only more stimulating than the traditional lecturing style, but are also proven to help students develop their problem solving, critical thinking, communication and interpersonal skills, which are highly sought after by most employers.





## BLOG

### 10 reasons why Groningen is the best place to study in the Netherlands

*The Netherlands is a small country but has quite a few research universities, a lot of which are top-ranked. However, in my honest opinion, Groningen is the absolute best city to study in the Netherlands, and here are 10 reasons why:*

- 1** A large amount of English-language degrees
- 2** The international atmosphere
- 3** Great education
- 4** Young vibes
- 5** There is always something to do
- 6** Geographically well located
- 7** A great city to stay fit
- 8** Groningen is very hip
- 9** Exchange possibilities
- 10** A safe and green city

Scan the QR code and read **Avital's** complete blog.





## Higher education and Covid-19

This guide describes the 2022–2023 academic year based on the knowledge and expectations held in August 2021. At the time of publication a number of Covid-19 measures remain in effect within the Netherlands. The aim is for education and research to take place on campus where possible, although some classes and exams will still be carried out online. The University of Groningen will continue to follow and adjust to any temporary Covid-19 measures that may be required. It is unclear if future measures will affect the academic year 2022–2023. However, the University of Groningen will enable students to continue with their education. Up-to-date information about the Covid-19 situation at the university can be found at [www.rug.nl/corona](http://www.rug.nl/corona).

## How will you be taught?

### Study year

The year is broken down into 4 blocks, each lasting 10 weeks. In this block, students follow specific courses for 7 or 8 weeks, and in the remaining two or three weeks of the blocks, exams are held. This means that there are generally 4 exam sessions per year.

### Lectures

Lectures are given in all programmes and usually last around two hours, although some may be longer. The lecturer(s) will provide information on a specific subject or theme related to your course and based on the reading material.

### Seminars

Seminars are interactive classes, involving a small group of students and facilitated by a tutor. In class you will be expected to participate in the activities and present on topics that have been covered in your lectures. Since the group is smaller, you will have the chance to ask questions and hold discussions with your fellow students and your seminar professor.

### Self-study

Alongside lectures, tutorials and group work, you will also be expected to carry out self-study activities, such as working on your assignments or doing your readings ahead of lectures or tutorials. The time you spend on independent study will depend on the programme you are enrolled in. All full time programmes expect students to spend 40 hours per week on their courses, which means that if you only have 10 hours of class per week, you are expected to spend 30 hours of self-study.

### Free Online Dutch Classes

European Council research suggests that 90% of Dutch people speak at least basic English, with the Netherlands ranked in first place globally for English language skills. Therefore, you do not necessarily need to speak Dutch in order to study and live in Groningen. It is still a good idea, however, to try out our free online course Introduction to Dutch as a MOOC (Massive Open Online Course), which runs for three weeks and will help you to learn the basics of the Dutch language.



## ECTS

The European Credit Transfer System (ECTS) is a method of measuring your study programme as academic currency. ECTS is used all over Europe and enables you to easily compare study programmes and transfer your academic qualifications from one educational institution to another. Its aim is to make programmes and the performance of students of higher education more transparent and comparable European-wide and to replace or complement the different local (national) standards within Europe. Courses at the University of Groningen are generally either 5 ECTS or 10 ECTS, reflecting the

amount of hours of work necessary to complete the course. Each academic year comprises 60 ECTS with a full bachelor's degree being 180 ECTS, and a master's degree ranging from between 60 ECTS to 120 ECTS.

## Grading system

Exam grades in The Netherlands are based on a 10-point system: 1 is the lowest, and 10 is the highest mark. The passing grades range from 6 (satisfactory) to 10 (outstanding). The limit between pass and fail is 5.5, generally rounded to 6. The grades 1 to 3 are hardly used and the grade 10 is rarely awarded.

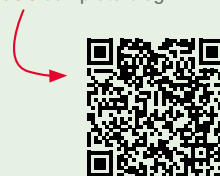
## BLOG

### What Dutch grades actually mean

*Many international students come to the Netherlands with very high expectations of the university but also of themselves. It is only natural that you want to do well in your studies and show off some good results to your friends and family. However, the Dutch grading system is unique as it is quite strict, which may be a surprise for some. While students from the UK or the US are used to getting A's, the Dutch system is geared towards preventing an 'inflation' of good results which would eventually cause good grades to lose their meaningfulness. So what do Dutch grades actually mean?*

- 0 - 5,4** = Nice try, but you'll have to go again!
- 6** = All you need
- 7** = More than satisfactory
- 8** = Great
- 9** = 1st place
- 10** = Is this even possible?

Scan the QR code and read **Luc's** complete blog.



# Life at the UG



Winter in Groningen!

📷 @rieannuh



This is Groningen at its best.

📷 @fotocraphy



Cosy and comfy in your UG hoodie!

📷 @universityofgroningen



A historic moment in the University Museum.

📷 Silvio Zangarini



Feike Sijbesma receives an honorary doctorate.

📷 @universityofgroningen



'PhD done, heels off, sneakers on' – Dr. Nienke Smit.

📷 @nienkexsmit



Ravensburger's puzzle with our Academy Building!

📷 @ishopgroningen



Welcome to the Netherlands!

📷 @universityofgroningen



Isn't this just magical?

📷 @arivaldelomar



## Follow us on Instagram @universityofgroningen



Spring at Campus Fryslân.

📷 @rahmadian\_eko



Winter wonderland in Groningen.

📷 @thomasbenmetan



Cherry blossoms in Groningen.

📷 @gerardkobes\_photography



Aletta Jacobs on ice skates.

📷 @universiteitsmuseumgroningen



Ilse Kolkman combines her professional rowing career with her studies at the UG.

📷 @universityofgroningen



A fairy tale in Groningen.

📷 @irisjojanke



Lectures during a pandemic.

📷 @spatial\_sciences\_groningen



Wreath-laying ceremony on Remembrance Day.

📷 @universityofgroningen

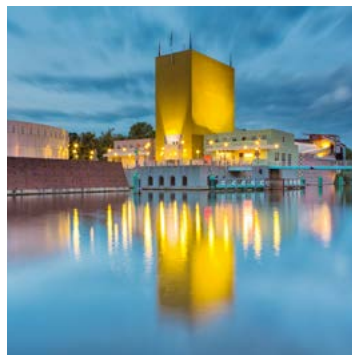


Khaled happily greets each student who studies at the University Library.

📷 @universityofgroningen

# Our locations

Living in the city of Groningen will place you in the heart of a historic, vibrant student city with so much on your doorstep. A year in Groningen includes festivals in our parks, numerous sporting activities and bustling cafes and terraces.



## GRONINGEN

**233,218**  
Residents (2020)

- 1 Groningen is the largest and oldest city in the Northern Netherlands with its own international airport.
- 2 The city of Groningen is the capital of the province, which also bears the same name.
- 3 Groningen is home to various festivals, including Eurosonic (Europe's largest showcase festival), which launched the career of artists including Hozier and Bastille. Other festivals include Noorderzon, a 10 day performing art festival and StuKafest, where student rooms are used as mini concert halls or theatres.
- 4 Groningen is a city of entrepreneurs and has the second largest number of successful startups after Amsterdam.
- 5 The city has a top-league football club, FC Groningen (first European team for Luis Suarez), basketball team (Donar) and volleyball team (Lycurgus).








---

**6** The cost of living for students in Groningen is amongst the lowest in the country.

---

**7** There are many museums in Groningen including the University Museum, the Science Museum and the world famous Groninger Museum, which has hosted David Bowie, David LaChapelle and Rodin exhibitions.

---

**8** With roughly 150km of bicycle lanes, it's no surprise that the city is one of the best cycling cities in the Netherlands and Europe. Around 60% of all travel happens by bike and there are more bikes than people in Groningen (1.4 bikes for each inhabitant). It's no wonder that Groningen has some of the cleanest air in the Netherlands!

---

**9** Oosterpoort is the largest pop music venue in the north of the Netherlands. Underground club Vera hosted bands like Nirvana, Joy Division, Pearl Jam, U2, White Stripes and Sonic Youth at the start of their careers.

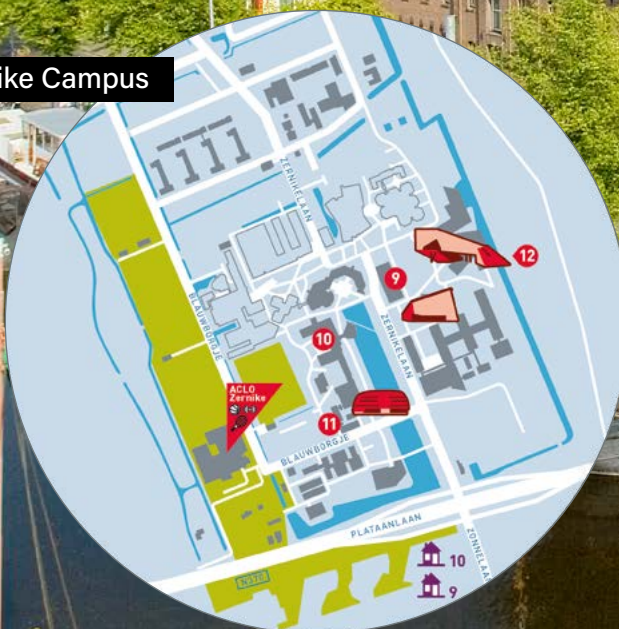
---



## Groningen City Centre



## Zernike Campus





### City buildings

- A Martini tower
- B City Hall
- C A-Kerk
- D Cultural Student Centre  
USVA
- E Groningen Museum

### Student Housing

- 1 Winschoterdiep
- 2 Blekerslaan
- 3 Frascati International  
Students House
- 4 Hoendiep
- 5 Hofstede de Grootkade
- 6 Albertine Agnesplein
- 7 Moesstraat 8
- 8 Moesstraat 16
- 9 Bisschop Nierman Centrum
- 10 Planetenlaan
- 11 Kraneweg-Melkweg

#### *Not on the map*

- Kornoeljestraat
- Martinihouse
- Stadswerf
- Upsilon
- Van Houtenlaan

### University buildings

- 1 Academy Building
  - University Student Desk
  - International Service Desk
- 2 University Library
- 3 University Museum
- 4 Oude Boteringestraat
  - Faculty of Theology
  - Faculty of Philosophy
  - Office of the University
- 5 Harmony Building
  - Faculty of Law
  - Faculty of Arts
- 6 Heymans Building
  - Faculty of Behavioural  
and Social Sciences
- 7 Faculty of Medical Sciences
- 8 University College Groningen
- 9 Bernoulliborg
  - Faculty of Science and  
Engineering
- 10 Duisenberg Building
  - Faculty of Economics  
and Business
- 11 Mercator Building
  - Faculty of Spatial Sciences
- 12 Linnaeusborg
  - Faculty of Science and  
Engineering





# LEEUWARDEN

**122,293**  
Residents (2020)

**Leeuwarden, the 2019 UNESCO City of Literature (formerly the 2018 European Capital of Culture) is where Campus Fryslân is based.**

**1** Leeuwarden is full of terraces which can be found near the canals that crisscross the intimate city centre. Around these canals you will also find museums, restaurants, bars and venues where you can listen to upcoming bands or attend a range of diverse cultural exhibitions and events.

**2** Leeuwarden is the start and finish of the eleven city ice skating race which covers about 135 miles and takes place on the canals that connect the 11 cities in Friesland, the province where Leeuwarden is based. With the change in climate, the tour is rarely held on ice but people have found other means to navigate the route – walking, swimming and even sailing in a solar-powered boat.

**3** Oldehove, the Leaning Tower of Leeuwarden, started to lean during its construction and has had a slight tilt ever since causing it to lean more than the one in Pisa.

**4** The city was the capital of the Netherlands from 1584–1747 and was home to the royal family who lived at Stadhouderslijk Hof.

**5** MC Escher was born in the city in 1898 and is one of the most famous Leeuwarders of all time. He was a world renowned graphic artist and his mysterious artwork has appeared on the covers of many books and albums.

**6** Blokhuispoort was built as a fort in 1499 and functioned as the city's prison until 2008. It now fulfills the role of being the cultural heart of Leeuwarden.







### City buildings

- A City Hall, Hofplein 38
- B Municipality, Oldehoofsterkerkhof 2
- C VVV office, Sophialaan 4
- D NS Station, Stationsplein 1
- E Fries Museum, Wilhelminaplein 92
- F Oldehove, Oldehoofsterkerkhof

### Student Housing

- 1 Kanaalstraat (UCF)

### University buildings

- 1 De Beurs, faculty building
- 2 Library, Blokhuisplein 40
- 3 Tresoar, Boterhoek 1

# Accommodation

Whether you are coming to the Netherlands for the first time or you are relocating from within the country – finding somewhere to live can be daunting. You might be a little apprehensive about leaving behind what is familiar, but living in shared accommodation with fellow students can give you a great start to university life. The new friends you make in those first few weeks will often remain friends throughout your time at university and beyond.

## A place to call home

The University works with SSH XL to provide accommodation for international students under 30 with the residences spread throughout the city of Groningen.

## Great location

All accommodation is located within 10–15 minutes by bike from the University of Groningen faculties and the city centre.

## All inclusive rent

Including all utility bills, Wi-Fi, maintenance, communal cleaning (e.g. kitchen areas).

## Community

Communal areas help create a sense of community and ensure a friendly and sociable environment. They represent a great place to meet new friends.

## Websites

[www.athomeingroningen.com](http://www.athomeingroningen.com)

Information on house-hunting and living in Groningen

<https://www.sshxl.nl/en>

Accommodation website for students wishing to find student housing in Groningen

[www.rug.nl/accommodation](http://www.rug.nl/accommodation)

Accommodation tips

[www.rug.nl/accommodationblog](http://www.rug.nl/accommodationblog)

Blog on how to find a home in Groningen



## Very important advice – Start looking for accommodation early

The start of the academic year is always an extremely busy period throughout the Netherlands and it can be difficult to find a room in many Dutch student cities. Over 20,000 students will also be looking for somewhere to stay in the city of Groningen at the same time as you. Therefore, finding accommodation is a priority and you should reserve a room as early as possible. For example, if you are starting your studies in September, we strongly advise that you begin actively looking for a room in April. It is also wise to apply to your degree programme at the University of Groningen in a timely manner and avoid waiting until the 1st May deadline, as this will delay your search for accommodation.

The 'reserved' rooms within SSH properties become available at the start of May and are usually fully booked within a few weeks. In addition, availability and choice within the private rental market become increasingly limited the longer you wait. Prices can also increase when there is a shortage of rooms in the city.

You can also consider looking for accommodation in a nearby city or town in the north of the Netherlands. Most locations are within a comfortable travelling distance from the Central Station in Groningen and can be easily reached by regular public transport. Examples are the city of Assen (only 17 minutes by direct train) and the city of Leeuwarden (34 minutes by direct train).



# SSH

## When do I apply for accommodation in Groningen?

The booking system opens at the start of May.

## How do I apply?

Once you receive your letter of acceptance (provisional, conditional or unconditional) from the university, you can register on the website **www.sshxl.nl/en**. You will be informed that the application has been sent to the university and we will check and approve your application. This can take up to two working days.

## Can I choose where I live?

Yes.

## How are rooms allocated?

Rooms are allocated on a first come, first served basis with most rooms being gone by mid-June. Please be aware that once the rooms are gone there is no waiting list.

## How do I reserve my room?

Once you have reserved your accommodation, you will need to pay a down payment and this will vary depending on the type of room and duration of your rental period.

## How long will my contract be?

You will receive a contract for the same period as your period of study, so from a minimum of 1 month to a maximum of 12 months.

## How do I pay my rent?

Rent is paid at the start of the month by bank transfer or direct debit. Other options are also available.

## Is there a deadline for accommodation applications?

There is no deadline. However, once all rooms have been reserved, it is no longer possible to be assigned a room.

## Costs and other information

Up-to-date information on the various accommodation offered by SSH on behalf of the University (including the all-important costs) is available on the SSH website at **www.sshxl.nl/en**.

### Disclaimer:

The University of Groningen is not affiliated with any housing organisations in Groningen and finding accommodation is the responsibility of the student.

## BLOG

## Top Tips for finding housing in Leeuwarden

*Every major city in the world, from Shanghai to New York, is currently facing a housing shortage. This is a well known worldwide fact. Lucky for you Leeuwarden isn't as overpopulated as Shanghai or New York City so it should be a little easier. In order to try to make it easier for you I've outlined some housing lessons that I have learned while searching for housing throughout my still ongoing student years.*

- **Start Early**
- **Check Out websites**
- **Join Facebook Groups**
- **Call Agencies**
- **Do your Googles**
- **Be Persistent**
- **Be Careful**

Scan the QR code and read **Sinead's** complete blog.



## Living in Leeuwarden

If you will be studying in Leeuwarden, more information about accommodation can be found at:  
**www.rug.nl/cfaccommodation**

# University fees and living costs

---

The fees you pay and the support you are entitled to will depend on whether you are classed as an EU/EEA or non-EU/EEA student, which usually depends on the passport you hold. Our tuition fee information is up to date and provides you with an idea of what you will be paying for the first year of your programme.

## How do Groningen and Leeuwarden compare with other Dutch cities?

Both cities have many advantages which make them cheaper places to study compared to other university cities. These include:

- compact cities therefore you won't have to travel far between the university buildings, city centre shops and your accommodation.
- both are known as cycling cities with bicycle-only routes – the fact it is all flat makes cycling a great deal easier.

It is roughly € 100 cheaper to live in Leeuwarden than Groningen.

## Tuition fees 2022/23

The University of Groningen tuition fees for regular degree programmes depend on government regulations and are the same for Dutch and European Union/European Economic Area citizens (all EU countries plus Norway, Switzerland, Liechtenstein and Iceland).







#### TABLE OF TUITION FEES FOR EU/EEA STUDENTS

	Fees 2022 entry
All bachelor's and master's degree programmes	€ 2,209
University College Groningen and University College Fryslân	€ 4,249*

\* The 2022 EU/EEA tuition fees will be confirmed by UCG and UCF from November 2021. Please check [www.rug.nl/tuitionfees](http://www.rug.nl/tuitionfees) for up-to-date tuition fee information.

#### TABLE OF TUITION FEES FOR NON-EU/EEA STUDENTS\*\*

	Fees 2022 entry
<b>Bachelor's programmes</b>	
Medicine	€ 32,000
University College Groningen and University College Fryslân	€ 12,600
Science and Engineering	€ 14,000
All other international Bachelor's degree programmes	€ 9,500
<b>Master's programmes</b>	
Arts and Humanities	€ 13,500
Behavioural and Social Sciences	€ 15,000
Campus Fryslân	€ 15,000
Economics and Business	€ 15,000
Law	€ 15,000
Medical Sciences – Human Movement Sciences; Sport Sciences	€ 17,500
Medical Sciences – Research Master's	€ 17,500
Medical Sciences – Dentistry, Medicine	€ 32,000
Philosophy	€ 13,500
Science and Engineering	€ 17,500
Spatial Sciences	€ 15,000
Theology and Religious Studies	€ 13,500

\*\* The non-EU/EEA tuition fees listed in the International Guide give an indication based on the tuition fees of recent years. The 2022 EU/EEA tuition fees will be confirmed by faculties from November 2021. Please check [www.rug.nl/tuitionfees](http://www.rug.nl/tuitionfees) for up-to-date tuition fee information.



**There are a number of ways in which you can pay your tuition fees and this information can be found on the university website. If your fees will be paid by a recognised financial sponsor such as an overseas government, charity or international business, we can invoice your sponsor directly for your tuition fees.**

Please note that we cannot invoice members of your family for your fees.

#### More information

Dutch Ministry for Education,  
Culture and Science Education  
Office (DUO)

**[www.duo.nl/particulier/student-finance/apply.jsp](http://www.duo.nl/particulier/student-finance/apply.jsp)**

#### More information

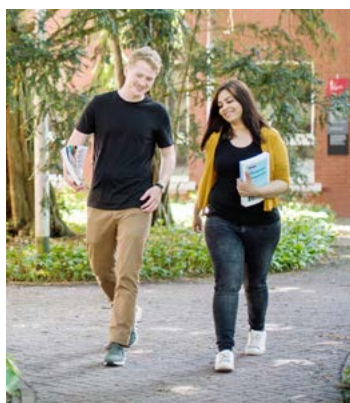
**[www.rug.nl/tuitionfees](http://www.rug.nl/tuitionfees)**

### **Funding and scholarships**

In recognition of the outstanding talent of many international students, the University of Groningen is committed to attracting, supporting and rewarding the best students by offering a number of scholarships. Alongside our own scholarship programmes, there are a number of available scholarships via external national and international organisations.

Funding:

**[www.rug.nl/grantfinder](http://www.rug.nl/grantfinder)**







## Living expenses

For the 2022/23 academic year, the University estimates that living costs will be €9,500 – €12,000 per year (excluding tuition fees). These estimates are for 12 months and include accommodation, utility bills, food, books, clothes, travel, mobile phone and social expenses.



### LIVING EXPENSES

Essentials		Cost per calendar year
Study costs	Study costs, textbooks, readers, printing	€ 650
Housing	Rent (including energy, internet bills, excluding administration costs and security deposit of approximately one month rent)	€ 6,000
Food and drinks		€ 3,000
Travel expenses	Bus, train, bike	€ 600
Insurance	Health care, third-party, fire and theft insurance	€ 1,440
<b>Total costs</b>		<b>€ 11,690</b>

# Supporting you

**Studying at university is exciting but it can also be demanding. At the University of Groningen, you will have a wide support network including mentors, study advisors and tutors who will be available to help and advise you on various aspects of your student life.**

## Study advisors

Each programme has one or more study advisors who you can contact for practical information. They play an important role in academic career counselling and provide confidential guidance on the following issues:

- Analysis of your interests, talents and ambitions (personal profile and labour market).
- Assistance in choosing your specialisation, optional courses, follow on study programmes, choosing an Honours path.
- Help in finding and choosing study periods abroad, committee membership, internships, etc.
- Improving your study method, exam preparation, planning, thesis, etc.
- Support for personal matters.

## Contact your study advisor

[www.rug.nl/studyadvisor](http://www.rug.nl/studyadvisor)

## Career services

Our Career Service offers a wide range of services to make you more employable and to provide you with development opportunities in preparation for the graduate employment market. There are a range of professionals on hand including student counsellors, coaches and student psychologists offering guidance throughout your programme to help you consider your career options and develop the skills and experience you will need.

if you are unable to meet the team, there are several online resources where you can find a variety of information including new vacancies, careers workshops and networking events.

## More information

[www.rug.nl/careerservices](http://www.rug.nl/careerservices)

## Student Support Centre

The UG student counsellors are there to help you navigate your way through the challenges of being a university student. The student counsellors are independent and you can make an appointment with them if you have questions about your academic programme.







## BLOG

### Uni resources you should know

*As university students, we are mostly unaware of the vast majority of resources that are available to us. Sure, we might be familiar with a few, such as our study advisors and the computers available to use all over campus... but the services that the university provides extend way further than that. This blog will show you the ins-and-outs of all the resources provided by the University of Groningen, divided into 4 major categories: academic resources, career resources, wellbeing/health resources, and other various resources. Let's get started!*

Scan the QR code and read **Ariana's** complete blog.



# Life beyond study

Students at the University of Groningen have a wide variety of social and sporting opportunities for life outside of class. There are plenty of opportunities for you to try new things at the university, as well as develop your talents through fantastic events, sporting activities and networking opportunities!

## Faculty and study associations

Most faculties have one or more study associations that allow you to socialise and network with others doing a similar programme to you. These associations are often made up of Dutch and international students and arrange presentations from professional organisations and potential employers, as well as organising social events and outings.

## Student associations

Student-run associations offer you the opportunity to meet other students during your time in UG. Activities range from regular jazz festivals by the Groningen Student Big Band, to public speaking training offered by Nexus (Faculty of Law) and events run by the Amnesty Student group. Groningen also has a lively chapter of ESN (Erasmus Student Network), who run an introductory week for International students.

## More information

[www.rug.nl/  
internationalstudentassociations](http://www.rug.nl/internationalstudentassociations)

## Sports

At the University of Groningen, we know how much staying fit and active can help your studies.

Groningen has the ACLO as the overarching student sports organisation home to 100 sports clubs. The ACLO (founded in 1945) is the largest student sports organisation of the Netherlands and represents the Groningen students' sporting interests at a national level. For a fee of just € 59,95 per year, you will join 19,000 others who have access to sports and activities including water polo, African dance, bouldering, basketball and rugby.

## More information

[www.aclosport.nl/en](http://www.aclosport.nl/en)

## Sports facilities at Campus Fryslân

If you are studying at Campus Fryslân in Leeuwarden, you can use the sports facilities offered by Leeuwarden Stadiestad for a small yearly fee. There is a choice of different sports, including basketball, futsal, swimming and kickboxing.

## More information

[www.leeuwardenstudentcity.nl](http://www.leeuwardenstudentcity.nl)



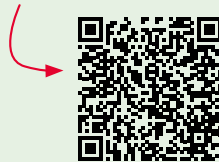


## BLOG

### Student Associations: are they worth the hype?

In this blog, I'd like to take you through some of the reasons why joining an association is a good way to ensure you live your best student life alongside your academic commitments! Generally, joining a student association is a great way to connect with new people, share experiences and learn new things. In Groningen, you will find 4 main types of associations – study, student, sports and cultural associations – each type differs in what they offer students but you'll be sure to find enjoyable experiences in each.

Scan the QR code and read **Luc's** complete blog.

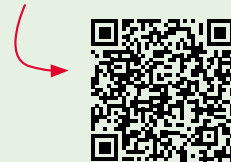


## BLOG

### Exploring the ACLO Sports Centre!

The ACLO is the largest student sports association in the Netherlands. It is often one of the first stops for any student in Groningen who is interested in getting together for a team sport or just wants to get in shape at the gym. Underlining the student character is the fact that the ACLO is entirely run by students from Groningen. For this blog, I met up with Marlon from the ACLO board to get a tour around the ACLO sports centre, with their main facility located at Zernike campus.

Scan the QR code and read **Ariana's** complete blog.



# Advancing your career

**Being an employable graduate in today's competitive job market is about more than just gaining a university degree. Technical and analytical skills are highly regarded by employers.**

The University of Groningen strives to equip you with:

- the ability to think critically about difficult problems and to express your opinion in an articulate and effective manner.
- access to international networks that will broaden your horizons.
- the ability to work effectively as part of a team.
- the ability to locate, organise and critically evaluate information from multiple sources.

Graduating with a good degree constitutes the first step towards landing the right job after you graduate. There are a number of ways that the University of Groningen helps its students to stand out from the crowd and gain a competitive edge:

## **1 A worldwide reputation**

The University of Groningen has been consistently ranked in the top 100 universities globally.

## **2 Get career advice and meet potential employers**

The University's free Career Service offers regular workshops and training courses on career choice, CV writing, interview techniques and job hunting. There are also career events through the year that will give you the opportunity to meet with potential employers and learn more about a particular career.

## **3 Add to your CV**

Potential employers are looking for people who are good at teamwork, and who can organise themselves and other people, as well as manage their time effectively. Being involved in one of the many sporting or academic clubs and societies is a good way to learn these skills.

## **4 Network, network, network**

We have a global alumni network of 120,000 graduates as well as a group of international alumni ambassadors available to provide insight into "what comes next" after graduation. Our academics also have multiple links and connections, providing another source of valuable information.

## **5 A global skill-set**

Cross-cultural understanding is a key quality in today's global environment, so getting experience abroad is invaluable. We have a large number of exchange partners around the world and bachelor's students can spend part of their degree in a number of institutions in countries including Japan, Australia, the USA and Brazil.

## Career Services

The UG Career Services will support and prepare you to shape the society that you live in, whichever profession you choose to enter. We help you to develop strategies to be successful in an increasingly challenging jobs market and support you to think about your future early in your studies – including one-to-one sessions with a professional careers adviser; drop-in CV checks; skills development workshops and workshops tailored to your degree programme.

**More information**

[www.rug.nl/careerservices](http://www.rug.nl/careerservices)







## Graduate destinations

› Shell › United Nations › ABN Amro › AT&T › Ernst and Young › Deutsche Bank › SAP › Deutsche Gesellschaft für Internationale Zusammenarbeit (GIZ) GmbH › Embassy of Canada › Phillips › Zoological Society of London › University of Oxford › Unilever › PWC › KPN Consulting › University of Oslo › Eurochem › Indonesia › Honeywell › AkzoNobel › IOM – UN Migration Agency › Deloitte China › Schlumberger › Boeing › G-Star Raw › Klixar › Queensland University of Technology › Netherlands Forensic Institute › Culture Papillon › Chevron › Nomura › BMW Group › Max Planck Institute for Biochemistry › BSi Steel

## BLOG

### Avital's Career Corner

As part of our Career Services team, MA student Avital has gathered the best advice for kickstarting your career after your studies. In her blogs, she shares her experiences with topics such as succeeding in job interviews, finding work in the Netherlands and creating an outstanding CV.

Scan the QR code and read **Avital's** complete blog.



# Groundbreaking research

The University of Groningen is home to many leading research centres, groups and institutes, which tackle a range of global challenges through groundbreaking research. Groningen-based researchers collaborate with colleagues from all over the world on a daily basis and, as a Master's student at the UG, you will have the opportunity to be involved in this research.

The University of Groningen's research profile consists of the research focus areas of the faculties and the selected three societal themes of the University: Healthy Ageing, Energy and Sustainable Society. These focus areas and themes are interconnected and complement each other, thus enabling the University to actively undertake research that seeks to address major questions in society and ensures that our findings can have immediate social relevance. Our researchers cooperate on a large scale with partners from business, public organisations and the government – both within and outside the region. Here are some examples of how our researchers work together with a focus on our research themes:

## Adaptive Life programme

The Adaptive Life programme aims to integrate research into the two main forms of adaptation, which are a core aspect of any living system. The research focuses on connecting robotics and other human-designed adaptive systems; the modelling of cognition and neural networks; understanding biological processes at the molecular level; energetics and metabolism; biomedical and pharmaceutical research, and understanding complex systems in relation to large data.

## Brain Ageing

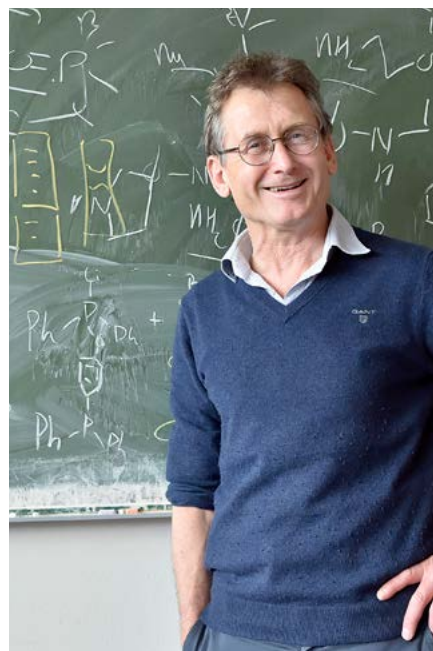
The Brain Ageing theme involves research that is aimed at understanding the function of the healthy brain and the dysfunctions of the nervous system with reference to neurological and psychiatric disorders. Its research also emphasises translational collaboration between lab-based and hospital-based researchers, integrating different levels of neuroscience research.

## Data Science and Systems

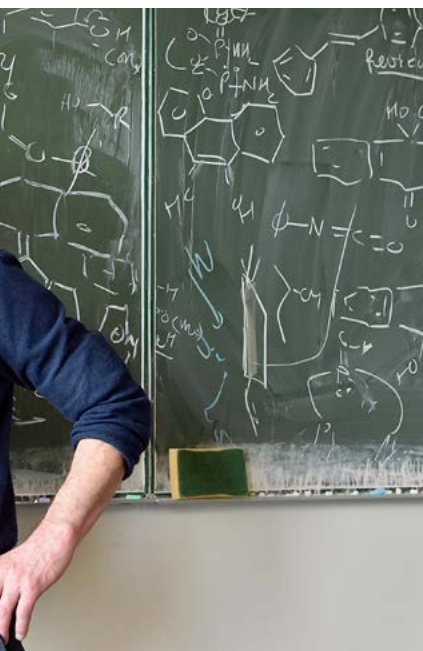
Complexity is a research cluster of 58+ prominent senior researchers in a number of basic disciplines (Mathematics, Astronomy, Computer Science, Artificial Intelligence, Systems & Control) and scientific application domains (Genomics, Pharmacology, Instrumentation). The ambition is to combine data science and complexity science to solve the challenges arising when complex systems and big data collide.

## Fundamentals of the Universe

Recently launched, the Fundamentals of the Universe hopes to connect research across all length scales by using linked theories. These include a range from the Planck scale (quantum gravity) via sub-atomic scales (particle physics), to cosmic dimensions (cosmology and







astrophysics). The research can be grouped into Building Blocks of the Universe, 'the Emergent Universe' and 'the Instrumentation Universe'. A further groundbreaking series of research is entitled 'Elucidating Malignant Transformation'. The programme aims to translate insights into oncogenesis and tumour behaviour from basic research into full prevention, detection and treatment methods. The researchers at the Cancer Research Center Groningen do this by clarifying the molecular mechanisms that determine malignant transformation, with the ultimate goal being personalised cancer therapy.

## Religion and the Dynamics of Culture

Religion and the Dynamics of Culture which examines how political systems and religions interact as well as their influence on culture and society. This is centred around three sub-themes; 'The Interrelation of the Abrahamic religions in their formative phases', 'The former and continuing global importance of religion' and 'The relation between Christianity, philosophy and the public domain, in the Western world'.

## Human Wellbeing & Biomedical

Materials looks at the widespread use of biomaterial implants in modern health care. Biomaterials are used in post-oncological surgery, post-trauma recovery and in healing to ameliorate the wear caused by advanced ageing. Centred around the Kolff Institute, the research considers materials science, medical product development and clinical evaluation of both biomaterial implants and extracorporeal support systems.

### More information

[www.rug.nl/researchthemes](http://www.rug.nl/researchthemes)





# Studying a Bachelor's at the University of Groningen

**The UG has 36 English-taught bachelor's programmes, some of which have several variants (tracks).**

## **Numerus fixus programmes**

Numerus fixus programmes are high-demand programmes which require a selection procedure to be admitted. Per programme, there are only a selected amount of available seats for the most eligible students. The selection procedure consists of an early admission and an entry test or assignment, depending on the programme. The test, together with the candidate's CV and motivation letter, will determine whether or not they are fit for the programme. Since the Numerus Fixus programme requires more preparation, the deadline is also earlier. The deadline for Numerus Fixus applications is January 15th at 23:59 CET. On April 15th, the candidate will be informed if they have received an offer and how they can accept their place on the programme.

Numerus fixus programmes in English:

- International Business
- International Relations and International Organisation
- Artificial Intelligence
- Biology
- Biomedical Engineering
- Computing Science
- Medicine
- Psychology

## **Binding study advice for bachelor's students**

First-year students at research universities in the Netherlands have to earn at least 3/4 of their 60 ECTS (credits) during the first year of the bachelor's programme. This means a minimum of 45 ECTS of the total 60 for that year. This is called Binding Study Advice (BSA) and you will be advised in January of your first year about your results and progress and invited for a conversation with your study advisor. If you are not able to achieve the 45 credits, you will have to discontinue your degree. Halfway through your first year, you will receive what is called preliminary advice and at the end of the study year you will receive the Binding Study Advice.

## More information

[www.rug.nl/bsa](http://www.rug.nl/bsa)



A man with a full grey beard and red-rimmed glasses is shown from the chest up. He is wearing a white button-down shirt and has a green beaded necklace. He is looking down and to his left, with his right hand raised in a gesturing motion. He is wearing several bracelets on his right wrist, including a black one with yellow beads and a red one with yellow beads. He also has a ring on his right ring finger and a blue nail on his right thumb.

## Exchange semester

Studying abroad broadens your perspective, both academically and non-academically. We offer you the opportunity to experience a different culture, for living and studying, and to find interesting academic content outside of the scope of your regular degree programme. Going abroad enhances your career options, as many employers value an international experience. In return, the incoming exchange students add to the international atmosphere within the University of Groningen, providing you with the opportunity to learn to work in an international environment.

# ENGLISH-TAUGHT BACHELOR'S DEGREES

PROGRAMMES		DEADLINE
<b>Arts</b>		
BA	American Studies	1st May
BA	Art History	1st May
BA	Arts, Culture and Media	1st May
BA	Communication and Information Studie	1st May
BA	English Language and Culture	1st May
BA	European Languages and Cultures	1st May
BA	History	1st May
BA	International Relations and International Organisation	15th January
BA	Media Studies	1st May
BA	Minorities & Multilingualism	1st May
<b>Economics and Business</b>		
BSc	Econometrics and Operations Research	1st May
BSc	Economics and Business Economics	1st May
BSc	International Business	15th January
<b>Science and Engineering</b>		
BSc	Applied Mathematics	1st May
BSc	Applied Physics	1st May
BSc	Artificial Intelligence	15th January
BSc	Astronomy	1st May
BSc	Biology	15th January
BSc	Biomedical Engineering	15th January
BSc	Chemical Engineering	1st May
BSc	Chemistry	1st May
BSc	Computing Science	15th January
BSc	Industrial Engineering and Management	1st May
BSc	Life Science and Technology	1st May
BSc	Mathematics	1st May
BSc	Pharmacy	1st May
BSc	Physics	1st May



PROGRAMMES	DEADLINE
<b>Medical Sciences</b>	
BSc Medicine	15th January
<b>Spatial Sciences</b>	
BSc Human Geography and Planning	1st May
BSc Spatial Planning and Design	1st May
<b>Behavioural and Social Sciences</b>	
BSc Psychology	15th January
<b>Philosophy</b>	
BA Philosophy of a specific discipline	1st May
<b>Law</b>	
LLB International and European Law	1st May
<b>Theology and Religious Studies</b>	
BA Religious Studies	1st May
<b>University College Groningen</b>	
BA/BSc Liberal Arts and Sciences	1st May
<b>University College Fryslân</b>	
BSc Global Responsibility and Leadership	1st May

## Web classes

The University of Groningen organises web classes twice a year, which are designed to give you a taste of the first year of study. The web classes last four weeks and you will undertake a number of assignments of 2–3 hours per week.

More information  
[www.rug.nl/webclasses](http://www.rug.nl/webclasses)

More information  
[www.rug.nl/bachelors/in-english](http://www.rug.nl/bachelors/in-english)



# How to apply to a **bachelor's degree programme** at the University of Groningen

**Applying to study at university can seem like a complicated process and you may have a number of questions. Our Student Information & Admissions Office is here to help you make the application procedure easier. We strive to process standard applications within 10 working days but please be aware that during busy periods it can take longer than this.**

## **Entry requirements**

You will be able to find up-to-date country-specific information on entry requirements on our website. This will also give you an overview of the qualifications we accept but if you are not able to find information on the website, you can call or email the Admissions Office. Some courses may require you to submit additional information or take supplementary exams and you can check with the Faculty, the Admissions Office or on the programme's web page.

## More information

**[www.rug.nl/admissions](http://www.rug.nl/admissions)**

## **English language requirements**

You might be required to submit an English language qualification prior to being admitted onto a programme. The University accepts a number of different qualifications such as IELTS, TOEFL and C1 Advanced or CPE, and if you have studied in certain countries before joining us, you might not need to provide evidence of your English language proficiency. If you are not sure, check the website or ask the Admissions Office.

## More information about how to apply

**[www.rug.nl/howtoapply](http://www.rug.nl/howtoapply)**

## Country-specific entry requirements

**[www.rug.nl/internationalqualifications](http://www.rug.nl/internationalqualifications)**







## FAQ's

### **Do I need to have all my qualifications/transcripts before I apply?**

You do not need to have all your qualifications before you submit an application. If you have not yet graduated, or have not yet received your final diploma, you can indicate this when applying and provide provisional grades.

### **How long will it take for me to get a decision on my application?**

We aim to get back to you soon after we receive your applications and endeavour to make a decision for bachelor's applications within 30 days (excluding selective/numerus fixus programmes). Please be aware that this can take longer when approaching the deadline and if you do not get a response after 30 days, please contact the Admissions Office.

### **Is there an application fee?**

In most cases the University of Groningen does not charge an application fee for applications to our bachelor's programmes. Applications to programmes at the Faculty of Science and Engineering may incur a fee.

### **When is the application deadline?**

The official deadline for most bachelor's programmes is 1st May. The deadline for selective English language programmes (Artificial Intelligence; Biology; Biomedical Engineering; Computing Science; International Business; International Relations & International Organisation; Medicine and Psychology) is 15th January each year.

# Studying a Master's Degree at the University of Groningen

The University of Groningen offers a range of study options after your Bachelor's programme, from Pre-master's to PhDs. There are also a number of opportunities to link your UG degree to studies at partner institutions around the world.

## Premaster's

Pre-master's programmes are bridging programmes for students who want to enter a Master's programme, but have certain shortfalls in their academic background. Once you have successfully completed a Pre-master's programme (lasting a maximum of one year), you can enrol in the corresponding Master's programme. During the Pre-master's you will follow courses preparing you for a specific Master's degree. Information for HBO graduates (those currently studying at a Dutch University of Applied Sciences) HBO graduates (those who have completed their bachelor's degree at a University of Applied Sciences) cannot automatically

register for a Master's programme at the UG. However, many of our Master's degree programmes offer graduates of related HBO programmes a special Pre-master's programme. The most common transfers have standard bridging programmes and it is worth noting that a combination that is less usual does not necessarily mean that there is no Pre-master's programme available. In some cases a programme can be tailored to your situation. Please contact the study advisor of your chosen Master's degree to discuss your options.

## Information for applicants with a non-Dutch degree

Applicants with a non-Dutch degree cannot apply for Pre-master's programmes directly and you should first apply for the regular Master's programme of your choice. If your credentials are insufficient for direct admission into the Master's programme the Admissions Office will assist you with your registration as an international Pre-master's student. Please note that not all faculties offer Pre-master's programme for applicants with a non-Dutch education.

## More information

[www.rug.nl/premasters](http://www.rug.nl/premasters)

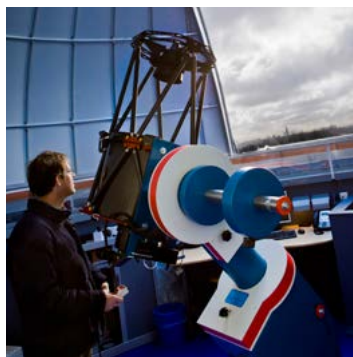






## Master's

Master's programmes at the UG usually combine advanced-level tuition with the completion of a thesis (an extended piece of writing based on reading and independent research on your chosen topic) with the supervision of a member of academic staff. You will normally be able to choose from a number of modules so that you can tailor your programme to what you are interested in. Master's programmes in Arts and Humanities are usually one year with Science and Engineering Master's being two years. Upon completion you will be awarded a Master of Arts (MA), Master of Science (MSc), or a Master of Laws (LLM) qualification; depending on your field of study.



## Research Master's/ Top Master's

Research Master's and Top Master's programmes are especially geared towards those interested in a research career in academia or beyond. The additional second year in the two-year Research or Top Master's programmes offers excellent preparation for a PhD and you write a PhD proposal as part of the programme. These programmes are more independent and while you will still receive support and guidance from an expert supervisor, the focus of your programme will be on your own research work.

## Double Degree Programmes

The University works closely with strategic international partner universities to offer joint programmes that enable you to study in other countries. This means you are also able to experience different academic environments, cultures and societies. When you complete a double degree programme, you receive an additional certificate and in some cases a degree from both universities.

More information

[www.rug.nl/doubleddegrees](http://www.rug.nl/doubleddegrees)

## Erasmus Mundus Programmes

The European Commission has awarded the prestigious Erasmus Mundus status to five of the University of Groningen's Master's programmes. Erasmus Mundus aims to enhance quality in higher education through scholarships and academic cooperation between Europe and the rest of the world. The scheme offers financial support for institutions and scholarships for individuals.

More information

[www.rug.nl/erasmusmundus](http://www.rug.nl/erasmusmundus)



## BLOG

### The Ultimate Resource Guide to Choosing a Master's

Scan the QR code and read **Ariana's** complete blog.



# ENGLISH-TAUGHT MASTER'S DEGREES

PROGRAMMES	DEADLINE EU/EEA	DEADLINE NON-EU/EEA
------------	--------------------	------------------------

## Arts

MA	<b>Archaeology</b> (research)	1st May	1st May
MA	<b>Arts and Culture</b>	1st May	1st May
	Arts, Cognition and Criticism		
	Arts, Policy and Cultural Entrepreneurship		
	Art History		
	Curatorial Studies		
	Film and Contemporary Audiovisual Media		
	History of Architecture and Town Planning		
	Music, Theatre and Performance Studies		
MA	<b>Arts and Culture</b> (research)	1st May	1st May
	Cultural Leadership (research)		
	Arts, Media and Literary Studies (research)		
MA	<b>Classics and Ancient Civilizations</b>	1st May	1st May
	Ancient History		
	Classics		
MA	<b>Communication and Information Science</b>	1st May	1st May
	Digital Humanities		
	Information Science		
MA	<b>European Studies</b>	1st May	1st May
	Euroculture (erasmus mundus)		
MA	<b>History</b>	1st May	1st May
	History Today		
MA	<b>History</b> (research)	1st May	1st May
	Classical, Medieval and Early Modern Studies (research)		
MA	<b>International Relations</b>	1st May	1st May
	East Asian Studies		
	European Politics in a Global Perspective		
	Geopolitics & Connectivity		
	International Relations and International Organization		
	International Political Economy		
	International Security		
MA	<b>International Relations</b> 120 ECTS	15th April	15th April
	International Humanitarian Action (NOHA)		
MA	<b>International Relations</b> (research)	1st May	1st May
	Modern History and International Relations (research)		
MA	<b>Linguistics</b>	1st May	1st May
	Applied Linguistics		
	Theoretical and Empirical Linguistics (formally European Linguistics)		
	Multilingualism		



PROGRAMMES		DEADLINE EU/EEA	DEADLINE NON-EU/EEA
	<b>Linguistics</b> (research)	1st May	1st May
MA	Clinical Linguistics / EMCL+ (research) erasmus mundus		
MA	Language and Cognition (research)		
MA/ MSc	Language and Communication Technologies (LCT) (research) erasmus mundus		
MA	<b>Literary Studies</b>	1st May	1st May
	English Literature and Culture		
	European Literatures and Interculturality		
	Writing Editing and Mediating		
MA	<b>Media Studies</b> 90 ECTS	1st May	1st May
	Datafication and Digital Literacy		
	Journalism		
	Media Creation and Innovation		
	Social Media and Society		
MA	<b>Middle Eastern Studies</b>	1st May	1st May
MA	<b>North American Studies</b>	1st May	1st May
	American Studies		

## Behavioural and Social Sciences

MSc	<b>Behavioural and Social Sciences</b> (research)	1st May	1st May
MSc	<b>Educational Sciences</b>	1st June	1st June
	Learning in Interaction		
MSc	<b>Pedagogical Sciences</b>	1st June	1st June
	Deafblindness		
	Ethics of education: history, philosophy and law		
	Youth 0-21, Society and Policy		
MSc	<b>Psychology</b>	1st March	1st March
	Work, Organizational and Personnel Psychology		
	Applied Social Psychology		
	Clinical Psychology		
	Clinical Neuropsychology		
	Applied Cognitive Neuroscience		
	Clinical Forensic Psychology and Victimology		
	Environmental Psychology		
	Theory and History of Psychology		
	Talent Development and Creativity		
	<b>Double Degree</b> Sustainability and Environmental Psychology The Double Degree admission and application is handled by Leuphana University of Lüneburg. For more information, please visit <a href="http://www.leuphana.de/en/graduate-school/course-offerings/psychology-sustainability">www.leuphana.de/en/graduate-school/course-offerings/psychology-sustainability</a>	1st June	1st June

PROGRAMMES	DEADLINE EU/EEA	DEADLINE NON-EU/EEA
------------	--------------------	------------------------

### Campus Fryslân

MSc	<b>Sustainable Entrepreneurship</b>	1st May	1st May
MA	<b>Multilingualism</b>	1st May	1st May
LLM	<b>Governance and Law in Digital Society</b>	1st May	1st May
MSc	<b>Tourism, Geography and Planning</b>	1st May	1st May
MSc	<b>Cultural Geography: Climate Adaptation Governance</b>	1st May	1st May
MSc	<b>Voice Technology</b>	1st May	1st May

### Economics and Business

Key

S = September  
start

F = February  
start

MSc	<b>Accountancy and Controlling</b>	1st May (S) 15th October (F)	1st May (S) 15th October (F)
	<b>Double Degree</b> Chinese Economy and Finance		
MSc	<b>Business Administration</b> (five profiles)	1st May (S) 15th October (F)	1st May (S) 15th October (F)
	Change Management		
	Health		
	Management Accounting and Control		
	Small Business and Entrepreneurship		
	Strategic Innovation Management		
	<b>Double Degree</b> Chinese Economy and Finance		
MSc	<b>Econometrics, Operations Research and Actuarial Studies</b>	1st May (S) 15th October (F)	1st May (S) 15th October (F)
	<b>Double Degree</b> Chinese Economy and Finance		
MSc	<b>Economics</b>	1st May (S) 15th October (F)	1st May (S) 15th October (F)
	<b>Double Degree</b> Economics and Economic Analysis		
	<b>Double Degree</b> Chinese Economy and Finance		
MSc	<b>Economic Development and Globalization</b>	1st May (S) 15th October (F)	1st May (S) 15th October (F)
	<b>Double Degree</b> International and Development Economics		
	<b>Double Degree</b> Central-East European Economics		
	<b>Double Degree</b> Economic Development and Growth		
	<b>Double Degree</b> Chinese Economy and Finance		
MSc	<b>Finance</b>	1st May (S) 15th October (F)	1st May (S) 15th October (F)
	<b>Double Degree</b> Finance		
	<b>Double Degree</b> Chinese Economy and Finance		
MSc	<b>Human Resource Management</b>	1st May (S) 15th October (F)	1st May (S) 15th October (F)
	<b>Double Degree</b> Chinese Economy and Finance		



PROGRAMMES		DEADLINE EU/EEA	DEADLINE NON-EU/EEA
MSc	<b>International Business and Management</b>	1st May (S) 15th October (F)	1st May (S) 15th October (F)
	<b>Double Degree</b> Advanced International Business Management and Marketing		
	<b>Double Degree</b> Chinese Economy and Finance		
MSc	<b>International Financial Management</b>	1st May (S) 15th October (F)	1st May (S) 15th October (F)
	<b>Double Degree</b> Chinese Economy and Finance		
	<b>Double Degree</b> International Financial Management		
MSc	<b>Marketing</b> (two profiles)	1st May (S) 15th October (F)	1st May (S) 15th October (F)
	Marketing Analytics and Data Science		
	Marketing Management		
	<b>Double Degree</b> Strategic Marketing Intelligence		
	<b>Double Degree</b> Marketing and Finance		
	<b>Double Degree</b> Marketing and Information Systems		
	<b>Double Degree</b> Chinese Economy and Finance		
MSc	<b>Supply Chain Management</b>	1st May (S) 15th October (F)	1st May (S) 15th October (F)
MSc	<b>Technology and Operations Management</b>	1st May (S) 15th October (F)	1st May (S) 15th October (F)
	<b>Double Degree</b> in Operations Management		
MSc	<b>Research Master in Economics and Business</b>	1st May	1st May
	Depending on the Double Degree, the admission and application is handled by either the University of Groningen or the partner university (application deadlines might vary). For more information, please visit <a href="http://www.rug.nl/feb/doubleddegrees">www.rug.nl/feb/doubleddegrees</a> .		

## Law

LLM	<b>Energy and Climate Law</b>	1st May	1st May
LLM	<b>European Law in a Global Context</b> (formally European Economic Law)	1st May	1st May
LLM	<b>Global Criminal Law</b>	1st May	1st May
LLM	<b>International Commercial Law</b>	1st May	1st May
LLM	<b>International Human Rights Law</b>	1st May	1st May
LLM	<b>Public International Law</b>	1st May	1st May
LLM	<b>Governance and Law in Digital Society</b> (Taught in Leeuwarden at Campus Fryslân)	1st May	1st May

PROGRAMMES	DEADLINE EU/EEA	DEADLINE NON-EU/EEA
------------	--------------------	------------------------

### Medical Sciences

MSc	<b>Clinical and Psychosocial Epidemiology</b> (research)	1st May	1st March
	Health Systems and Prevention	1st May	1st March
MSc	<b>Human Movement Sciences</b>	1st May	1st May
MSc	<b>Molecular Medicine and Innovative Treatment</b> (formerly Medical and Pharmaceutical Drug Innovation)	1st May	1st March
MSc	<b>International Master in Innovative Medicine</b>	15th January	15th January
MSc	<b>Sport Science</b>	1st May	1st May

### Philosophy

MA	<b>Philosophy</b>	1st May	1st May
MA	<b>Philosophy, Science and Humanities</b>	1st May	1st April
MA	<b>Philosophy</b> (research)	1st May	1st April
MA	<b>Philosophy, Politics and Economics</b>	1st May	1st April

### Science and Engineering

Key  
S = September  
start  
F = February  
start

MSc	<b>Applied Mathematics</b>	1st May (S) 15th October (F)	1st May (S) 15th October (F)
MSc	<b>Applied Physics</b>	1st May (S) 15th October (F)	1st May (S) 15th October (F)
MSc	<b>Artificial Intelligence</b>	1st May	1st May
MSc	<b>Astronomy</b>	1st May (S) 15th October (F)	1st May (S) 15th October (F)
MSc	<b>Behavioural and Cognitive Neurosciences</b> (selective)	1st May	1st May
MSc	<b>Biology</b>	1st May	1st May
MSc	<b>Biomedical Engineering</b>	1st May	1st May
MSc	<b>Biomedical Sciences</b>	1st May	1st May
MSc	<b>Biomolecular Sciences</b> (selective) (formerly Molecular Biology and Biotechnology)	1st May	1st May
MSc	<b>Chemical Engineering</b>	1st May (S) 15th October (F)	1st May (S) 15th October (F)
MSc	<b>Chemistry</b>	1st May	1st May
MSc	<b>Computing Science</b>	1st May (S) 15th October (F)	1st May (S) 15th October (F)
MSc	<b>Computational Cognitive Science</b>	1st May	1st May



PROGRAMMES		DEADLINE EU/EEA	DEADLINE NON-EU/EEA
MSc	<b>Ecology and Evolution</b> (selective)	1st May	1st May
MSc	<b>Energy and Environmental Sciences</b>	1st May	1st May
MSc	<b>Industrial Engineering and Management</b>	1st May	1st May
MSc	<b>Marine Biology</b> (selective)	1st May	1st May
MSc	<b>Mathematics</b>	1st May (S) 15th October (F)	1st May (S) 15th October (F)
MSc	<b>Mechanical Engineering</b>	1st May	1st May
MSc	<b>Medical Pharmaceutical Sciences</b>	1st May	1st May
MSc	<b>Nanoscience</b> (selective)	1st May	1st February
MSc	<b>Physics</b>	1st May (S) 15th October (F)	1st May (S) 15th October (F)
MSc	<b>Science Education and Communication</b>	1st May	1st May
MSc	<b>Water Technology</b> (joint degree)	DUTCH: 1st August EU/EEA: 15th July	1st May

## Spatial Sciences

MSc	<b>Economic Geography</b>	1st May	1st May
MSc	<b>Economic Geography Regional Competitiveness and Trade</b>	1st May	1st May
MSc	<b>Environmental &amp; Infrastructure Planning</b>	1st May	1st May
	<b>Double Degree</b> Development Planning and Infrastructure Management		
	<b>Double Degree</b> Urban Governance within a Global Environment		
	<b>Double Degree</b> Water and Coastal Management		
	<b>Double Degree</b> Urban Planning, Environment and Infrastructure		
MSc	<b>Population studies</b>	1st May	1st May
	<b>Double Degree</b> Social Demography		
	<b>Double Degree</b> Demography and Social Inequality		
MSc	<b>Research Masters Spatial Sciences</b> – Master's track: <b>Islands and Sustainability</b>	1st May	1st May
MSc	<b>Society, Sustainability and Planning</b> (formally Socio-spatial Planning)	1st May	1st May
	<b>Double Degree</b> Urban Governance within a Global Environment		
	<b>Double Degree</b> Urban Planning, Society and Sustainability		
MSc	<b>Real Estate Studies</b>	1st May	1st May

PROGRAMMES		DEADLINE EU/EEA	DEADLINE NON-EU/EEA
<b>Theology and Religious Studies</b>			
MA	<b>Religion, Conflict and Globalization</b>	1st May	1st May
MA	<b>Religion and Cultural Heritage</b>	1st May	1st May
MA	<b>Religion and Pluralism, Ancient and Modern</b>	1st May	1st May
	<b>Double Degree</b> Religion and Pluralism		
MA	<b>Religion, Health and Wellbeing</b>	1st May	1st May
MA	<b>Theology and Religious Studies</b> (research)	1st May	1st May







# PhD/Graduate Schools

**Dutch universities offer a great environment for those wishing to undertake a PhD, with research in the Netherlands being held in high regard internationally. Most programmes typically take four full years and are based on individual research. At the UG, research takes place at Graduate Schools which provide a balanced mix of expert supervision and tailormade postgraduate training.**

## What is a PhD?

Doctoral and PhD degrees are the highest level of qualification awarded by universities in the Netherlands.

- You carry out an independent research project under supervision over an extended period of time, before submitting a thesis usually consisting of a number of papers that have been or will be published in relevant academic journals over an extended period of time.
- You take on the responsibility of managing your project, while planning the research timeline for yourself with assistance from supervisors.
- You will be expected to initiate discussions, make arguments on behalf of your research and ask for help when required.

- Alongside your thesis, you also have the opportunity to follow a PhD training programme based on your needs and interests.
- If you are looking for a challenging and exciting opportunity to work independently at the cutting-edge of research, we can offer a rich, dynamic and supportive international environment in which to pursue your passion.
- Alongside your thesis, you also have the opportunity to follow a PhD training programme based on your needs and interests.

Some international PhD candidates choose to come to the University of Groningen as part of their PhD and you too have the option of carrying out part of your research abroad.

## PhD programmes at the UG are divided between the following ten graduate schools:

- Graduate School for the Humanities
- Graduate School of Behavioural and Social Sciences
- Graduate School of Economics and Business
- Graduate School of Law
- Graduate School of Medical Sciences
- Graduate School of Philosophy
- Graduate School of Science and Engineering
- Graduate School of Spatial Sciences
- Graduate School of Theology and Religious Studies
- Graduate School Campus Fryslân







## What should be in a summary?

- 1 Title of the proposal, your name, your nationality;
- 2 Your main research questions;
- 3 The specific journals (or other means of publication) in which you intend to publish your results;
- 4 The State of the Art: what are the latest developments in the field? How did they inform your research questions? Have you checked thoroughly that your research questions have not been investigated before?

- 5 Impact on Science: how will the field benefit from your research? Can the concepts you will develop be applied in other cases? What further research will be opened up by your findings?
- 6 Impact on Society: how will society benefit from a deeper understanding of your specific topic?
- 7 Means of funding (if scholarship, please state name of sponsor);
- 8 Specific reasons for choosing the University of Groningen (in other words, make clear that you are not sending this mail to 100+ institutions; show focus on what we actually do).

- English skills test score, IELTS (requirements vary, so check for your individual case) or the equivalent in internet-based/ international TOEFL, of no more than two years old;
- your motivation letter, and any letters of reference you may have;
- your research proposal, if you have it;
- any examples of your scientific writing in English (thesis, publication, article, paper, presentation);
- a concise summary of the research proposal.



## Applying for your PhD

Prepare the relevant documents in electronic form (PDF preferred):

- updated CV;
- passport copy;
- Bachelor's and Master's diplomas and transcripts;

Once you are ready to submit, you should contact your chosen Graduate School. Generally, there is no deadline for application, as the admission to PhD programmes is continuous.

## More information

[www.rug.nl/phd](http://www.rug.nl/phd)

# How to apply – Studielink

**Studielink is responsible for managing applications to University programmes in the Netherlands. You are advised to apply as early as possible and you can apply for up to four programmes at a time.**

Before you apply, make sure that you meet the minimum entry requirements for the programme you have chosen to study and have prepared the supporting documents. We suggest that you apply as early as possible in order for your application to be processed in time. Please be aware that application deadlines vary, so make sure to check the application deadline for your programme of choice.

Please apply at  
[www.rug.studielink.nl](http://www.rug.studielink.nl)

## TIMELINE

### 1 October

Studielink application system opens

### 15 January – 1 May

Application deadlines  
(check programme)

### 1st Monday in September

Academic year starts

**The Studielink application is an easy online process with the following steps:**

**1** You create a Studielink account at [www.studielink.nl](http://www.studielink.nl)

**2** Log in with your new account and change your password.

**3** Fill out details about your previous education.

**4** Choose the programme(s) you wish to apply for.

**5** Submit the application by clicking the 'confirm' button.

**6** After creating the application in Studielink, you will receive a message from Studielink stating that the University of Groningen has to verify your educational background and/or personal details. To do this the University uses its own Online Application System (OAS). A separate email will be sent with the login details for OAS. This email will also be visible in the Studielink inbox.

**7** You log into OAS and complete your application by uploading the required application documents in a PDF format.

**8** Submit the application.



An application will not reach the University of Groningen Admissions Office until it has been submitted in OAS. If an application is not complete before the deadline, it will not be processed.







## Contact

### Email

**prospectives@rug.nl**

### Course catalogue

**www.rug.nl/ocasys**

### Overseas representatives

The University of Groningen has a number of overseas representatives with whom we work with globally. They are able to provide information on studying at the university, as well as provide guidance on the application process.

**www.rug.nl/representatives**

### Write to us

University of Groningen  
PO Box 72, 9700 AB Groningen  
The Netherlands

### Visit us

University of Groningen  
Academy Building  
Broerstraat 5, 9712 CP Groningen  
The Netherlands

## Stay in touch online



[www.rug.nl](http://www.rug.nl)



[@universityofgroningen](https://www.facebook.com/universityofgroningen)



[UniversityGroningen](https://www.youtube.com/UniversityGroningen)



[@univgroningen](https://twitter.com/univgroningen)



[universityofgroningen](https://www.instagram.com/universityofgroningen)



+31649230111



UniGroningen



[@uniofgroningen](https://www.tiktok.com/@uniofgroningen)

This guide describes the academic year 2022–2023 – based on what is known at publication in September 2021 – and is intended to help you choose your programme at the University of Groningen. The university makes every effort to ensure the accuracy of this guide and will use all reasonable endeavours to provide the programmes and services described within it. It cannot guarantee their provisions in the event of circumstances beyond our control (such as change in government policy or a lack of demand). All information published in this guide is subject to change and no legal rights may be derived. While the University of Groningen makes every endeavour to ensure the accuracy of the information presented in this guide, it cannot be held liable for any errors or inaccuracies you may find.

## Colophon

September 2021

### Text

University of Groningen

### Editor

Communications Department

### Design

Willem Dijkstra  
[www.inontwerp.nl](http://www.inontwerp.nl)

### Map

Page 12: Dorel Extra Bold  
Page 15: Daniël Houben

### Photography

Jasper Bolderdijk  
Elmer Spaargaren  
Michel de Groot  
Peter van der Sijde  
Marcel Spanjer  
Egbert de Boer  
Peter Tahl  
Taaten-Fotografie  
Henk Veenstra