



INTERNATIONAL ENTRANCE EXAM

# **BACHELOR** OF INTERNATIONAL BUSINESS ADMINISTRATION 2022-2023

Montpellier Business School is accredited:



# MAKING A DIFFERENCE

A committed and inclusive management school, MBS (Montpellier Business School) trains the forerunners of a sustainable economic transition

## PREPARE TO CHANGE THE FUTURE

### EDUCATING TO TRANSFORM THE FUTURE

To train, through higher education programmes, managers that are strong in their diversity, aware of their global responsibility in carrying out their missions, and able to adapt to changes in local, national and international environments.

### COMMITTED TO CHANGING THE WORLD IN A POSITIVE WAY

- ETHICS
- OPENNESS AND DIVERSITY
- GLOBAL RESPONSIBILITY AND PERFORMANCE



## INTERNATIONALLY RECOGNISED ACADEMIC EXCELLENCE



**5%**  
of Business  
Schools  
worldwide



**2%**  
of Master and  
Executive MBA  
Programmes



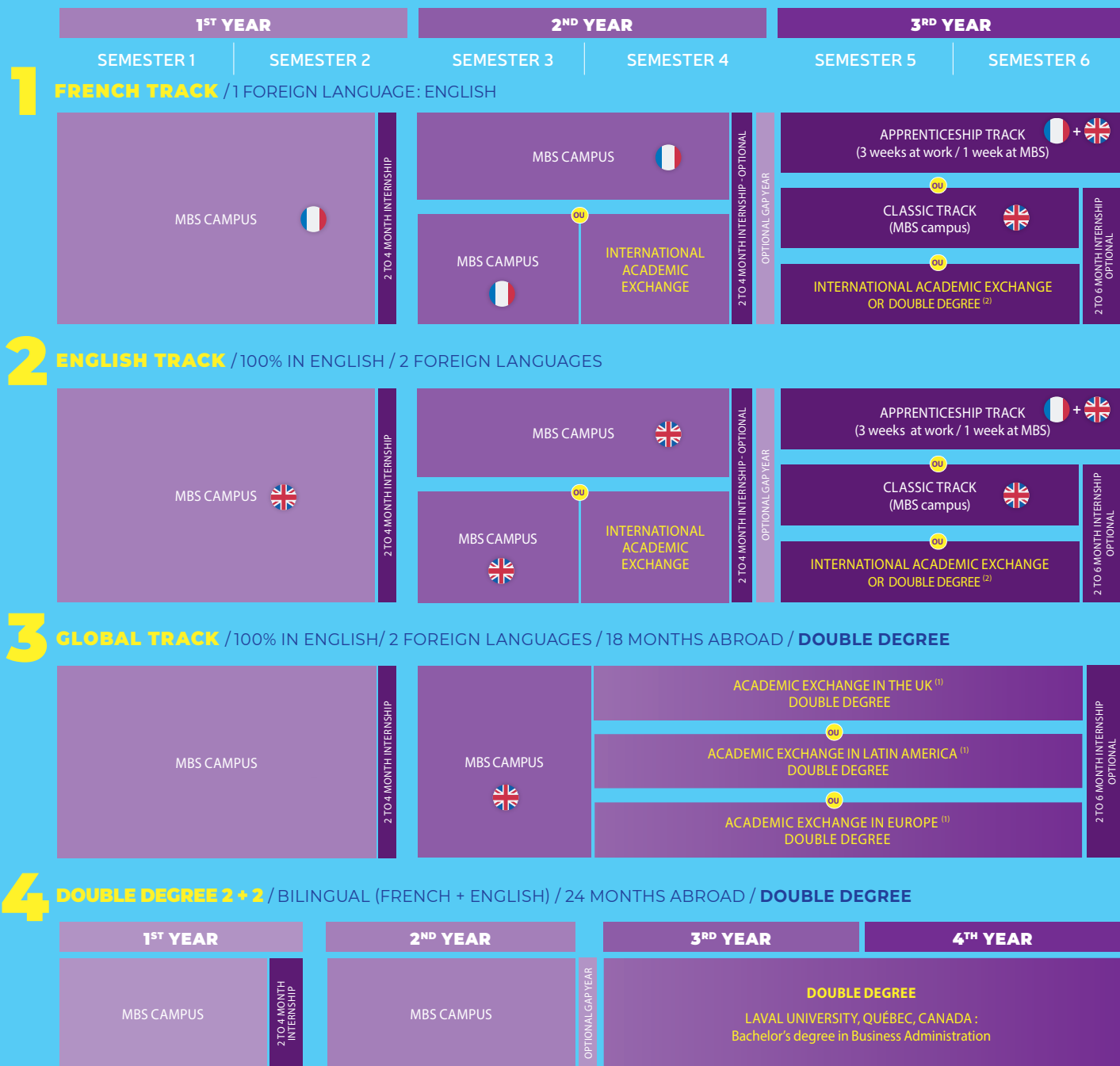
**1%**  
of Business  
Schools  
worldwide

### A COMPLETE RANGE OF MANAGEMENT PROGRAMMES

PROGRAMMES THAT COMBINE  
INTERACTIVE COURSES, PROFESSIONAL  
PROJECTS AND EXPERIENCES.

- Bachelor of International Business Administration
- Master in Management (Grande Ecole Programme)
- Masters of Science
- Executive MBA
- Executive Education
- Summer School

# 4 POSSIBLE TRACKS



(1) List of partner universities updated every year. / (2) To combine the academic semester in Europe in the 2nd year and the academic year abroad in the 3rd year, a gap year may be necessary.

## SOME COURSES:

- 1<sup>ST</sup> YEAR \***
- Marketing
  - Business ethics
  - Accounting
  - Management and organisations
  - Quantitative techniques applied to management
  - Legal business environment
  - Cross cultural management
  - Leadership
  - Geopolitics

\* 2021 intake - Non-exhaustive list

- 2<sup>ND</sup> YEAR \***
- Responsible management
  - Responsible marketing mix
  - Design thinking
  - Project management
  - Human resources & talent management
  - International business
  - Financial analysis
  - Sales negotiations
  - Microeconomics
  - Statistics applied to management
  - Analytical accounting

- 3<sup>RD</sup> YEAR \***
- International marketing
  - Digital transformation
  - French luxury & excellence
  - International economy
  - Corporate finance
  - Strategic management
  - Information systems management
  - Managing differently
- Some elective courses:**
- Supply chain
  - French luxury and excellence
  - International financial markets



# BUILD A CAREER THAT SUITS YOU

## MBS ENTREPRENEURSHIP CENTER START-UP SPIRIT

From information to professional development, MBS Entrepreneurship Center helps students to nurture their **entrepreneurial knowledge** and supports project promoters from finding their idea to searching for their funding.

- 18 Expert coaches
- 170+ pre-incubated projects\*
- 15 created companies\*
- 600+ supported projects since 2015

\*In 2021

EACH YEAR OF THE PROGRAMME STUDENTS TAKE PART IN CHALLENGES & BUSINESS GAMES ORGANISED IN PARTNERSHIP WITH WELL-KNOWN COMPANIES

AIRFRANCE

DECATHLON

PRIVATE SPORT SHOP

asics

DELL Technologies

## CAREER CENTER

Throughout the year, a team of recruitment professionals work full-time on student employability: MBS' career consultants support students at every stage of their professionalisation, from self-evaluation to the search for internships or employment.

**93% of our students obtain jobs 6 months after graduation.**

## A NETWORK OF 19,000 ALUMNI

The Alumni association gathers **19,000 graduates and more than 30 branches worldwide.**

Students are free lifetime members of MBS Alumni.

They benefit from all services allowing them to be involved in the network from the moment they arrive at school.

MBS since 1897 ALUMNI

## MAJOR PARTNER COMPANIES

### CONFERENCES / JOBS / INTERNSHIPS

MBS has partnerships with thousands of companies, and its Advisory Board includes 50 corporations that share its values and are involved in the school's strategic orientation and activities.



# MONTPELLIER



**4<sup>TH</sup>**

**BEST STUDENT CITY** IN FRANCE  
& **1<sup>ST</sup>** FOR THE **LIVING ENVIRONMENT**

L'ÉTUDIANT 2021

**IDEALLY LOCATED :**

**10KM FROM THE SEA**

**2 HOURS**  
FROM THE FIRST  
**SKI STATION**

**3 HOURS**  
FROM **PARIS**  
& **BARCELONA**



**100+**

PERMANENT  
FACULTY  
WITH **60 % +**  
INTERNATIONAL  
PROFESSORS

**110+**

START-UPS  
INCUBATED

**19,000+**

ALUMNI AROUND  
THE WORLD  
IN OVER  
**90 COUNTRIES**

**3,700+**  
STUDENTS

**25+**

**BACHELOR  
DOUBLE DEGREES**  
IN PARTNERSHIP  
WITH PRESTIGIOUS  
INTERNATIONAL UNIVERSITIES

**1,000+**

FOREIGN  
STUDENTS  
ON CAMPUS  
FROM  
**80+ NATIONALITIES**

**93%**

**GRADUATE  
EMPLOYMENT  
RATE**

**2<sup>nd</sup>**  
**BEST  
MANAGEMENT  
SCHOOL'S  
BACHELOR**  
FRANCE

LE PARISIEN - 2021

**2<sup>nd</sup>**  
**BEST  
MANAGEMENT  
SCHOOL'S  
BACHELOR**  
FRANCE

CHALLENGES - 2020

**1<sup>st</sup>**  
& ONLY  
**FRENCH  
BUSINESS  
SCHOOL**

CLASSIFIED IN THE  
"SHANGHAI RANKING" 2021

# ADMISSION PROCESS IN 3 STEPS

## 1

### CHECK THAT YOU MATCH ENTRY REQUIREMENTS

International Admissions are open to candidates, without distinction of nationality, who previously studied in a non French institution. Enrollment after high school or after one or two years in a university programme.

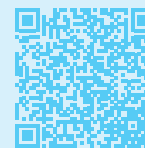
## 2

### COMPLETE THE ONLINE APPLICATION...

- <http://bit.ly/international-entrance-BIBA> (Application fees: 90€)

### ... AND UPLOAD THE FOLLOWING DOCUMENTS & TEST RESULTS:

- CV
- Photo
- Copy of your ID or passport
- Copy of the latest degree certificate and academic transcripts of the last 3 years of studies
- **Logic and reasoning test:**  
1<sup>st</sup> & 2<sup>nd</sup> year: TAGE Post-Bac or MBS logic & reasoning test (free)  
3<sup>rd</sup> year: TAGE 2 or GRE or GMAT or MBS logic & reasoning test (free)
- **French test:**  
TCF, DELF or DALF.  
For students wishing to follow the French track and whose mother tongue is not French.  
Minimum required : B2 Level
- **English test MBS iCIMS/Easyspeaking (free)**  
or external English test:  
French track - 1<sup>st</sup> year: 50 iCIMS/ EasySpeaking equivalent to 10/20 in the weighted admission score  
French track - 2<sup>nd</sup> and 3<sup>rd</sup> year: Minimum requirement: 675 TOEIC, 50 iCIMS/ Easyspeaking, 60 TOEFL, 5.5 IELTS or 85 Duolingo  
English track - 1<sup>st</sup> year: Minimum requirement: 60 iCIMS/EasySpeaking  
English track - 2<sup>nd</sup> year and 3<sup>rd</sup> year: Minimum requirement: 700 TOEIC, 60 iCIMS/ EasySpeaking, 75 TOEFL, 5.5 IELTS or 100 Duolingo.



## 3

### SELECTED CANDIDATES WILL BE SCHEDULED FOR AN ADMISSION INTERVIEW VIA PRE-RECORDED VIDEO. FOR ASSISTANCE IN TEST PREPARATION, PLEASE CONTACT US.

## TUITION FEES

2022-2023 Academic year

	1 <sup>st</sup> YEAR	2 <sup>nd</sup> YEAR	3 <sup>rd</sup> YEAR	4 <sup>th</sup> YEAR
FRENCH TRACK	€ 9 000	€ 9 000	€ 9 000 or € 0 if Apprenticeship track <sup>(1)</sup>	-
ENGLISH TRACK	€ 11 000	€ 11 000	€ 11 000	-
GLOBAL TRACK	€ 11 000	€ 12 000	€ 13 000	-
2+2 TRACK	Depending on chosen Track		€ 13 000	€ 13 000

- Tuition fees remain the same throughout the course duration
- Payment by installments available
- Individual scholarships may apply (up to € 2000 scholarship according to admission results and availability)
- The academic year abroad doesn't require additional fees

<sup>(1)</sup> When opting for the apprenticeship track, you do not pay tuition fees.



### LIVING COSTS IN MONTPELLIER 30/40% LESS EXPENSIVE THAN PARIS

- Accommodations: € 500 to € 600 /month
- Miscellaneous expenses: minimum € 350 /month



### INTERNATIONAL STUDENT SUPPORT

- Digital Welcome Desk: a dedicated online portal for International students
- Accommodation support (a condition to obtaining a visa)
- Support to apply for a French visa
- Airport or train station pick-up
- Help with administrative procedures (opening a bank account, telephone contract, insurance, French social security enrollment, etc.)
- Earlier start to integrate international students

Non contractual document.  
This document was created for informative purposes.  
Tracks, prices and conditions may be subject to change.



photo: LigneBlanche.net - Photos: Gilles Lefrançois - AdobeStock - Printed on recycled paper

## CONTACT US: ADMISSIONS DEPARTMENT

+33 (0) 6 28 91 15 47  
Africa & Middle East

+33 (0) 6 10 67 08 75  
Europe, Russia & Americas

+33 (0) 6 47 75 14 42  
China & Taiwan, Thailand,  
Vietnam, Laos, Hong Kong

+33 (0) 6 47 48 78 35  
Rest of Asia & Oceania

[apply2bachelor@montpellier-bs.com](mailto:apply2bachelor@montpellier-bs.com)

[montpellier-bs.com/international](http://montpellier-bs.com/international)

Montpellier Business School

2300 avenue des Moulins  
34185 Montpellier Cedex 4  
FRANCE



ENSEIGNEMENT  
SUPÉRIEUR PRIVÉ  
D'INTÉRÊT GÉNÉRAL  
LOI DU 22.07.2013

