




2020 – 2021

# Financial Aid

We help you open  
the door to your future



The IE Foundation, through IE University's Financial Aid Office, provides selective scholarships for talented and promising individuals accepted at IE University who exemplify our values and educational vision. In addition, we offer a tailor-made Financial Aid Program to finance your studies at IE University.

IE University aims to grow talent and develop students' unique value. Our objective is to ensure that individuals with outstanding achievements, excellent academic records, or who have excelled in other areas through personal effort and character, can study at IE University even if they do not have sufficient financial resources.

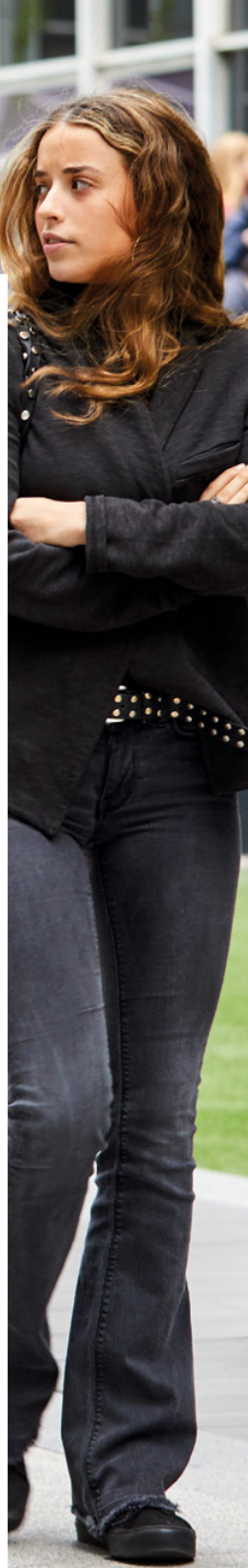
The IE Foundation and IE University's Financial Aid Department occasionally launch new scholarships for a specific time only, for a specific degree, or for a specific campus.

Please visit the website regularly at [www.financialaid.ie.edu](http://www.financialaid.ie.edu)

All scholarships are compatible with government financial aid or aid from other sources, so long as the total amount awarded does not exceed 100% of the tuition fees.

### APPLICATION PROCESS

1. You can only apply once you get admission to your program and before the start of your first academic year. Please take into account the deadline to apply is July 15th. Apply through our online application using the same user name and password you used for the admission process.
2. You can apply for up to 3 scholarships.
3. The Scholarship Committee will review the academic performance of the students awarded aid every July.

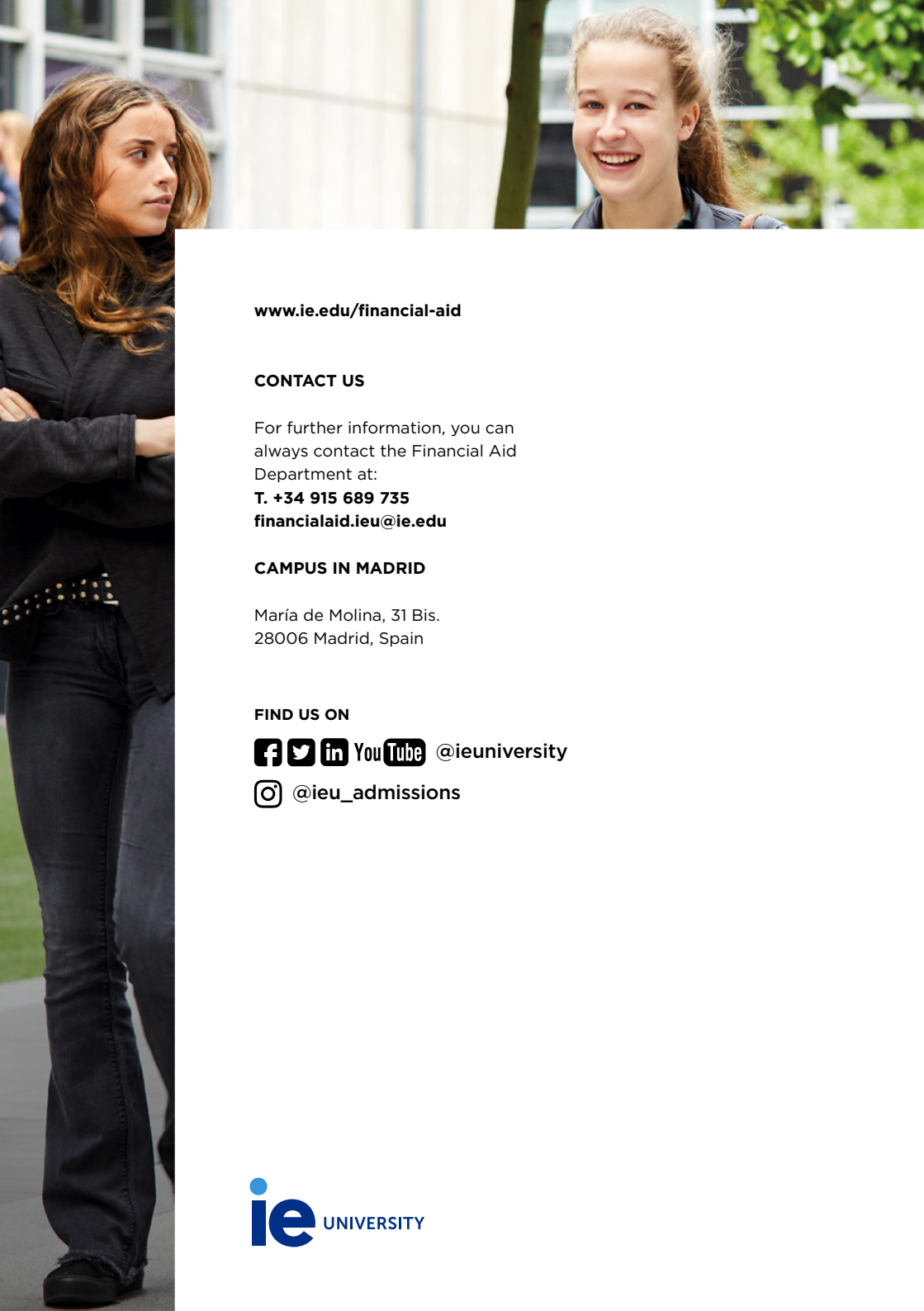


## IE SCHOLARSHIPS

| Scholarships   | Covers                            | Degree   |
|--|-----------------------------------|--|
| <b>IE<sup>3</sup> Collaboration Award</b>                      | Up to 75%                         | All  |
| <b>IE-High Academic Achievement Award</b>                      | Up to 100%                        | All  |
| <b>IE-Scholarship for Good Academic Performance</b>            | Up to 75%                         | All  |
| <b>IE-Personal Excellence Scholarship</b>                      | Up to 75%                         | All  |
| <b>IE-Young Entrepreneurs Scholarship</b>                      | Up to 75%                         | All  |
| <b>IE-Humanities Scholarship</b>                               | Up to 50%                         | All  |
| <b>IE-Scholarship</b>  | Evaluated on a case-by-case basis | All  |
| <b>IE-Women in STEM Scholarship</b>                            | Up to 75%                         | Bachelors in Data and Business Analytics, and Computer Science and Artificial Intelligence |
| <b>IE Scholarship for Countries in Special Situations</b>      | Evaluated on a case-by-case basis | All  |
| <b>IE-Multiple Siblings Family Support Scholarship</b>         | Up to 15%                         | All  |
| <b>IE-Parents "Young Talented Leaders Scholarship Program"</b> | 100%                              | All  |

| Scholarships   | Covers     | Degree           |
|--|------------|------------------|
| <b>IE-FRV "Young Talented Leaders Scholarship Program"</b>     | Up to 100% | All              |
| <b>IE-International Baccalaureate (IB) Scholarship</b>         | Up to 75%  | All              |
| <b>IE-United World Colleges (UWC) Scholarship</b>              | 100%       | All              |
| <b>IE-Queen Rania Foundation Scholarship for Women Leaders</b> | Up to 40%  | All              |
| <b>IE-Cuatrecasas, Gonçalves Pereira</b>                       | Up to 50%  | Bachelor of Laws |
| <b>IE-Rodrigo Uría</b>   | Up to 50%  | Bachelor of Laws |
| <b>IE-PricewaterhouseCoopers (PwC)</b>                         | Up to 50%  | Bachelor of Laws |
| <b>IE-Pérez-Llorca</b>   | Up to 50%  | Bachelor of Laws |
| <b>IE-Latham &amp; Watkins</b>                                 | Up to 50%  | Bachelor of Laws |
| <b>IE-Cliford Chance</b>                                       | Up to 50%  | Bachelor of Laws |

The scholarships above may change and some others may be added so please always visit our website in order to get updated information.



[www.ie.edu/financial-aid](http://www.ie.edu/financial-aid)

### CONTACT US

For further information, you can always contact the Financial Aid Department at:


**T. +34 915 689 735**  
**[financialaid.ieu@ie.edu](mailto:financialaid.ieu@ie.edu)**

### CAMPUS IN MADRID

María de Molina, 31 Bis.  
28006 Madrid, Spain

### FIND US ON

    @ieuniversity

 @ieu\_admissions