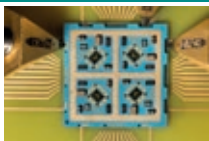




www.tu-ilmenau.de/international



Studying in **ILMENAU**

The **SPiRiT**
of science

th
TECHNISCHE UNIVERSITÄT
ILMENAU

8

Technische Universität Ilmenau

16

BA, BSc in combination with the German Diplom

24

MA, MSc at Ilmenau TU

30

Coming in for short-term study or internship

32

Doing a PhD at Ilmenau TU

38

Living in the university town

44

Buddying, leisure and pleasure

48

Ilmenau TU – a degree with a view

NATURAL BEAUTY

MODERN FACILITIES

ACADEMIC TRADITIONS



www.tu-ilmenau.de

Technische Universität Ilmenau

Ilmenau TU bids you welcome

Looking for the best professional engineering degree? Interested in studying sciences, business or media subjects?

Look no further! Here at Ilmenau TU you have found the ideal seat of learning. We are a „Technische Universität“ (TU - as the name suggests, we specialize in engineering and science) with departments that collaborate closely across the disciplines. We also have intensive partnerships with industry and business in Germany and the rest of the world, giving you an insight into what will be demanded of you in the world of work and helping you decide on a specific career. Our teaching is of the highest quality and student facilities are at the state of the art, which is reflected in the high ranking achieved by Ilmenau TU in independent league tables.



Students coming to Ilmenau are drawn fully into campus life from their very first day. There are many students acting as mentors for subject support; the teachers and students get to know each other personally. The compact, modern campus gives students opportunity to work up ideas together and put them into practice. The numerous special interest groups bring flair to the campus, initiating cultural events and a range of spare-time activities.

Both in Germany and abroad, Ilmenau TU is highly regarded. Students and researchers have come here to work from more than 90 nations, with all that means in dynamic, colorful interaction between countries and cultures. Come and feel welcome as one of our 7000 students.

High standards in academic content and student facilities

Ranked among top in Germany

Academic collaboration world-wide

Shared cultures in a university context



History of the University

1894

Engineer training begins at the
Thüringisches Technikum Ilmenau

1926

„Ingenieurschule Ilmenau“ School for electrical,
mechanical and radio engineers

1953

University level electrical engineering
the „Hochschule“ enrolls 268 students for
the German Diplom

1963

New title, „Technische Hochschule Ilmenau“
Additional subjects - Micro-Electrical Engineering,
Computer Science, Automation, Biomedical Engineering

from 1992

New status as „Technische Universität“

From 1947

state institution

Ilmenau TU with its 5 Departments is the only TU (University of Technology) in our state Thüringen.



Departments at Ilmenau TU



DEPARTMENT OF
Electrical Engineering and Information Technology



DEPARTMENT OF
Computer Science and Automation



DEPARTMENT OF
Mechanical Engineering



DEPARTMENT OF
Mathematics and Natural Science



DEPARTMENT OF
Economic Sciences and Media



Research

In a number of research fields, both pure and applied, Ilmenau TU is a leader nationally and internationally. We have male and female scientists working on the issues facing humanity: the increasing demand for energy and resources, the growth in mobility, the possibility of using biomedical technology for diagnosis. Even at the undergraduate stage you will have the opportunity to share in research, testing your skills and seeing if the subject is one in which you wish to go further. Not only the degree courses but also the research projects in Ilmenau are interdisciplinary. You will join forces with students from other subject areas to work on a problem or idea.

Our University works in six major research clusters:



Microsystems and Nanosystems

Nano-engineering
Precision Engineering and Precision Measurement Technology

www.tu-ilmenau.de/forschung



Interdisciplinary research

In the lead, within Germany and across the world



Smart Systems Engineering and IT

Technical and Biomedical Assistance Systems
Drive, Energy and Environmental Systems Technologies
Digital Media Technology
Mobile Communications

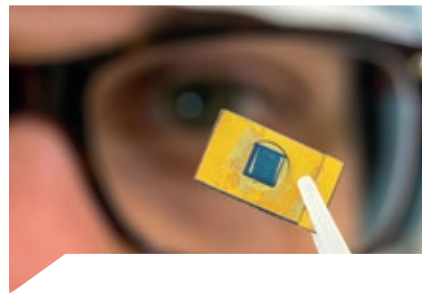
People and systems that spread our fame



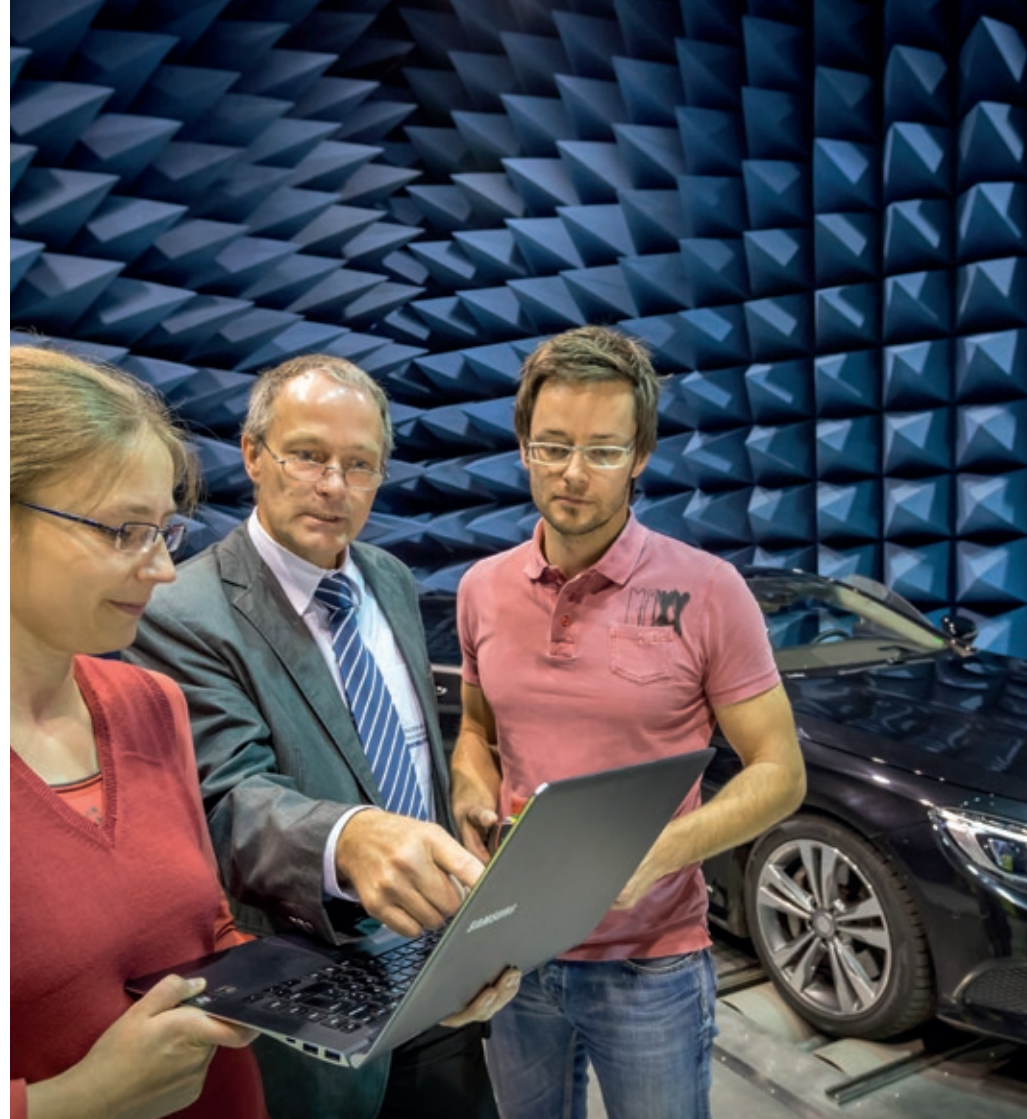
Doubtless you are a downloader of music or a listener on your smartphone. Did you know that Professor Karlheinz Brandenburg is one of the lecturers at Ilmenau TU? The breakthrough he made in his digital media technology research finds application today all over the world.



Then there is Emeritus Professor Gerd Jäger, whose research into nano-scale measurement and nano-positioning systems is an outright leader. Together with male and female research colleagues at Ilmenau TU he has developed sets of precision scales that are the most accurate in the world. They are an instrument that weighs objects down to a nanometer.




Our Department of Photovoltaics under Professor Thomas Hannappel has been crucial in the joint development of the most efficient solar cell known to the world, operating with an efficiency that means that 44.7 percent of the energy from the sun falling on the cell is converted to electricity. The world knows no solar cell more efficient than this.




Researchers from the TU working in the cluster concerned with general and biomedical engineering to assist the disabled have created an assisted-living robot which helps the elderly, frail or sick to keep mobile in their daily lives. The robot will provide support for such things as physical fitness routines or it can measure blood pressure.


In a different sphere, the department has invented a device to give a driver an audible warning in advance of an impending microsleep episode. It includes a video camera which can distinguish different people and their typical expressions, gestures and movements.

BA, BSc in combination with the German Diplom, Ilmenau TU

Engineering Sciences	number of semesters		
Biomedical Engineering	7		
Electrical Eng. and Information Technology	7	★	
Automotive Engineering	7		
Computer and Systems Engineering	7		
Mechanical Engineering	7	★	
Mechatronics	7		
Media Technology	7		
Optronics	7		
Technical Cybernetics and Systems Theory	7		
Materials Science and Engineering	6		

Mathematics and Natural Sciences	number of semesters		
Chemical Biotechnology	6		
Computer Science	6		
Mathematics	6		
Technical Physics	6		

Economics and Social Sciences			
Applied Media and Communication Studies	7		
Media Economics	6		
Information Systems Engineering	6		
Industrial Engineering and Management	6		

★ Also possible: German Diplom program (10 sem.)	 Also possible: international program with double degree	The first semester for all BSc, BA and Diplom programs is the winter semester (which runs from 1st October).	Taught in: German
--	---	--	-------------------



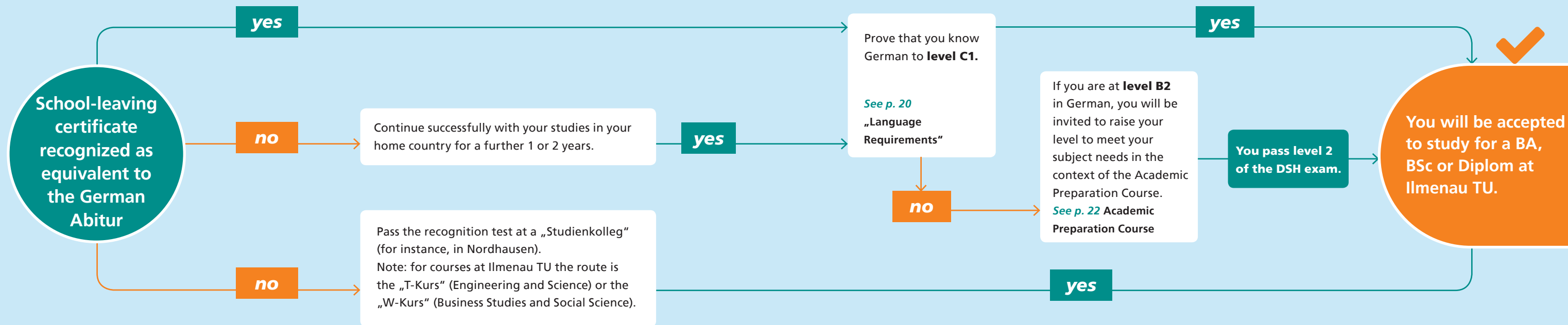
Kwang-moon Kim
FROM SOUTH KOREA



“It is a very good opportunity to study in a peaceful, family atmosphere here in Ilmenau TU. In addition, through Media and Communications Science’s practical programs, I was able to learn about the overall media and communications field, not just theoretical knowledge. Also studying with friends from different countries allowed me to broaden my perspective.”

MA COURSE:
Applied Media and Communication Science

What qualifications do you need to bring with you?



What are the language requirements?

We accept the following certificates as proof of your knowledge of German:

- » DSH level 2 (German Language Exam for Academic Purposes)
- » TestDaF: 3 subtests scoring 4, 1 subtest scoring 3 (social science subjects)
- » TestDaF: 2 subtests scoring 4, 2 subtests scoring 3 (applies only to engineering and science subjects)
- » DSD level 2
- » telc (German) level C1
- » Goethe-Zertifikat level C2

Q www.tu-ilmenau.de/en/international/degree-students/bachelor-studies



CONTACT

International Office

International Advisory Service

☎ +49 3677 69-2023

✉ info.apply@tu-ilmenau.de

How to apply

It is easy to apply for a place at Ilmenau TU using the dedicated online application portal.

Q www.tu-ilmenau.de/apply

Upload scans of the original of your school-leaving certificate and language certificate together with the scan of an attested translation of the certificates into either German or English.

When you arrive in Ilmenau, bring the originals (on paper) with you for the registration process. You will also have to lodge officially attested copies of all your originals with us.

Please do not forget that you will also need to lodge an attested copy of the translations with us.

Deadline for BA, BSc, and Diplom program applications: **15th July**

❗ If you will need a visa for admission to Germany, please be sure to apply by **15th May**, so that you receive your visa in time and will be here at the start of the semester.

The Nordhausen “Studienkolleg”

If your school-leaving certificate is not recognized as equivalent to the German Abitur, you will be offered an access course which takes place at Nordhausen “Studienkolleg”. Your German will need to be at least at level B1 for this. The course takes a year and culminates in the recognition test known as the “Feststellungsprüfung”. After passing this, you can take up your place at Ilmenau TU.

There is more than one authorized “Studienkolleg” in Germany where you can take the “Feststellungsprüfung”.

Q www.hs-nordhausen.de/en/international/staatliches-studienkolleg



The Academic Preparation Course (APC)

If your school-leaving certificate meets our approval but you have not yet enough knowledge of German and/or there is a BA or BSc exam subject you still need to take before beginning a Master’s, we offer the APC as a possibility. The course combines an intensive German course, starting at B1 level in the CEFR, and relevant subject teaching. It is provided directly by Ilmenau TU and usually takes one or two semesters (a maximum of 4). The DSH exam comes at the end. There is a charge for the APC.

Q www.tu-ilmenau.de/en/apc



Ninh Tran
FROM VIETNAM



“Here at Ilmenau TU, the professors can always find time for me. There are many internships on offer and I can have a paid part-time student job alongside my lectures, taking part in research projects run jointly with Taiwan, South Korea and Russia. I chose Ilmenau TU because of its good reputation, the variety of things to do on the campus, and the beautiful surroundings, the wooded hills of the Thüringer Wald.”

MSc COURSE:
Electrical Engineering and
Information Technology

An MSc or MA from Ilmenau TU


Engineering Sciences	starts in	number of semesters	taught in	complementary to BSc or BA	supplementary to BSc	
Biomedical Engineering	ws / ss	3	German	✓		🎓
Communications and Signal Processing	ws	4	English		✓	🎓
Electrical Power and Control Engineering	ws	4	German		✓	
Electrochemistry and Electroplating	ws	4	German		✓	
Electrical Engineering and Information Technology	ws / ss	3	German	✓		
Automotive Engineering	ss (ws possible)	3	German	✓		🎓
Computer and Systems Engineering	ss (ws possible)	3	German	✓		
Mechanical Engineering	ss (ws possible)	3	German	✓		🎓
Mechatronics	ss (ws possible)	3	German	✓		🎓
Media Technology	ws / ss	3	German and/ or English*	✓		
Miniaturized Biotechnology	ws	4	German		✓	
Optronics	ss (ws possible)	3	German	✓		
Research in Computer and Systems Engineering	ws	4	English		✓	🎓
Technical Cybernetics and Systems Theory	ws / ss	3	German	✓		🎓
Materials Science and Engineering	ws	4	German	✓		🎓

international program with double degree

* special subject: Audio Engineering or Video Engineering

Mathematics and Natural Sciences	starts in	number of semesters	taught in	complementary to BSc or BA	supplementary to BSc	
Chemical Biotechnology	ws	4	German	✓		
Computer Science	ws (ss possible)	4	German	✓		🎓
Mathematics and Business Mathematics	ws	4	German	✓		
Micro- and Nanotechnologies	ws (ss possible)	4	English		✓	
Renewable Energy Technology	ws	4	German		✓	
Technical Physics	ss (ws possible)	4	German	✓		

Economics and Social Sciences						
Media and Communication Science	ws / ss	3	German and/ or English	✓		
Media Economics	ws (ss possible)	4	German	✓		
Information Systems Engineering	ws	4	German	✓		
Industrial Engineering and Management	ws	4	German	✓		

 Also possible: international program with double degree

ss = summer semester (beginning 1st April)
ws= winter semester (beginning 1st October)

Complementary and supplementary MSc and MA degrees

If you already possess a BSc or BA degree, apply to do a Master’s in Ilmenau! The MSc and MA courses designated „complementary“ will require your first degree to be in the same or a closely matching subject. They build on your earlier knowledge and sharpen your focus. In the „supplementary“ Master’s programs you can venture into new territory. These courses do not build so exactly on the content of your undergraduate studies.

There are details of the admission criteria on the Departmental web-sites and in the regulations covering curricula and exams.



What you need to start on an MSc or MA



Master's program requirements

With only a few exceptions, the Master's courses at Ilmenau TU are taught in German. This means that you will need either „DSH-2“, an appropriate „TestDaF“ certificate or another of the certificates acceptable to us (see table opposite). If you have not achieved DSH at level 2 at the time when you apply, and if you have a knowledge of German at B2 level in the CEFR, you will be invited onto the APC and there will be a test of your German beforehand (see p. 22). Joining the APC gives you the possibility of fulfilling any conditions that have been set during the assessment procedure. These might be attending lectures that are a prerequisite for students intending to start as graduates at Ilmenau TU. The intention is to enable you to catch up on modules or skills of which you have been unable to provide proof from your earlier studies but which are essential to enable you to understand the content of the teaching in the Master's program. Similarly, you will need a specific level of English for all the MSc or MA programs that are taught in English. The table opposite lists the examination certificates that are recognized at Ilmenau TU and the scores or levels required for the relevant language.

Proof of knowledge of German:

- » DSH level 2 (German Language Exam for Academic Purposes)
- » TestDaF: 3 subtests scoring 4, 1 subtest scoring 3 (social science subjects)
- » TestDaF: 2 subtests scoring 4, 2 subtest scoring 3 (applies only to engineering and science subjects)
- » DSD level 2
- » telc (German) level C1
- » Goethe-Zertifikat level C2

Proof of knowledge of English:

- » TOEFL IBT score 79
- » TOEFL CBT score 250
- » TOEFL ITP score 550
- » TOIC score 800
- » IELTS level 6.5

🔍 www.tu-ilmenau.de/international/ds/master

How to apply

It is easy to apply for a place at Ilmenau TU using the dedicated online application portal: 🔍 www.tu-ilmenau.de/apply

Upload scans of the originals and of an attested translation (into either German or English) of the following certificates:

- your school-leaving certificate
- your BA or BSc certificate
- the certificate proving your knowledge of the relevant language (for courses taught in German, minimum level B2).

When you arrive in Ilmenau, bring the originals (on paper) with you. You will also have to lodge officially attested copies of all your originals with us. And please do not forget to lodge an attested copy of the translations with us, too.

When to apply to join MA and MSc programs

16.01. to 15 July | For programs starting in winter semester
16.07. to 15 January | For programs starting in summer semester

📌 If you will need a visa to come to Germany, we recommend that you apply for it before 15th May (for programs starting in the winter semester) or before 15th November (if starting in the summer semester). This will increase your chances of receiving the visa in time for the start of the program. It will also mean that you are in time for the (obligatory) language test that precedes the APC, if you have been invited onto the APC.

CONTACT

International Office

International Advisory Service

☎ +49 3677 69-2023

✉ info.apply@tu-ilmenau.de

„Come-in“ students and interns

Exchange semesters / Freemovers / Grants

Come and attend a selection of lectures at Ilmenau TU for one semester or two – this invitation applies to both exchange students and freemovers. If there is a preexisting partnership between Ilmenau TU and your home university (these may be under Erasmus+ or on a wider international basis), please join us as an exchange student. All the details for applying will be lodged in the International Office of your home university.

The absence of such a contractual partnership presents no problems. All the lectures, classes and programs at Ilmenau TU are available to „freemover“ students.

The TU is in close collaboration with the German Academic Exchange Service, the DAAD. Details of program content and the entry requirements will be available in the DAAD office for your country or region.

Campus University with international community

1 student in 5 from abroad

Great range of teaching, individual academic support

Entry requirements

You are on a program for a BA, BSc, MA or MSc in the same or a similar subject in your home university and will be completing that course there.

Your knowledge of German and/or English is at level B1 in the CEFR (at least). The choice of language must match that in which the classes you wish to attend are given.



How to apply

Whether you apply independently or via your home university's International Office, please use the dedicated online application portal (the link is on our website). You can apply either in German or English. Please upload scans of the following in support of the application:

- » Signed application form
- » ToR (Transcript of Records) or other proof from your home university of your studies and results so far
- » For applications to take elements of a Master's program, a scan of your BA or BSc certificate
- » Scanned proof of your knowledge of German and/or English as relevant to your intended subject(s): B1 at least

The following closing dates apply for all exchange or freemover students:

1st June for the ensuing winter semester (classes begin in October)

1st December for the ensuing summer semester (classes begin in April)

www.tu-ilmenau.de/en/international/exchange-students



CONTACT

International Office

Incoming Coordinator

☎ +49 3677 69-2574

✉ incoming@tu-ilmenau.de

Doing a PhD at Ilmenau TU

How doctoral studies are organised

There are two routes to the German title of Dr. at Ilmenau TU

1. individual doctoral studies
2. Doctorate taken within a Research Training Group

As the first category suggests, you do your research individually and have the personal supervision of a professor while working on your thesis. The way of applying is to approach the professor who has your subject as his or her field and to suggest your thesis to him or her. If this professor agrees to be your supervisor (in German he or she will be called your “Doktorvater” or “Doktormutter”), you can apply for admission via our online portal. Approval will be given if your academic qualifications (a recognized MA, MSc or German Diplom) fulfil the formal requirements for doctoral studies. Final acceptance for a PhD in the relevant Department constitutes the third step, after the decision by the Department Council as to whether there are conditions involving additional examinations.

There is no upper limit on how long a doctorate should take. However, a check will be made after eight semesters to ensure that all conditions for continued matriculation are fulfilled.

Basically, a PhD taken with a Research Training Group follows the same pattern but also involves attending lectures. Several doctoral students will be working on closely related tasks which are all part of a joint research project. An application to a Research Training Group is made to and through the Group. After that, the TU will check your certificates and qualifications. This is done via the online portal. PhD studies with a Research Training Group are linked to a paid temporary post.

All students taking a doctorate at Ilmenau TU write a doctoral thesis (their “Doktorarbeit”). They defend it before an academic board. Before the defense comes the “Rigorosum”, a viva voce examination requiring the student to prove his or her comprehensive knowledge of the whole subject.

All Departments at Ilmenau TU are accredited for the award of the following German doctoral degrees:

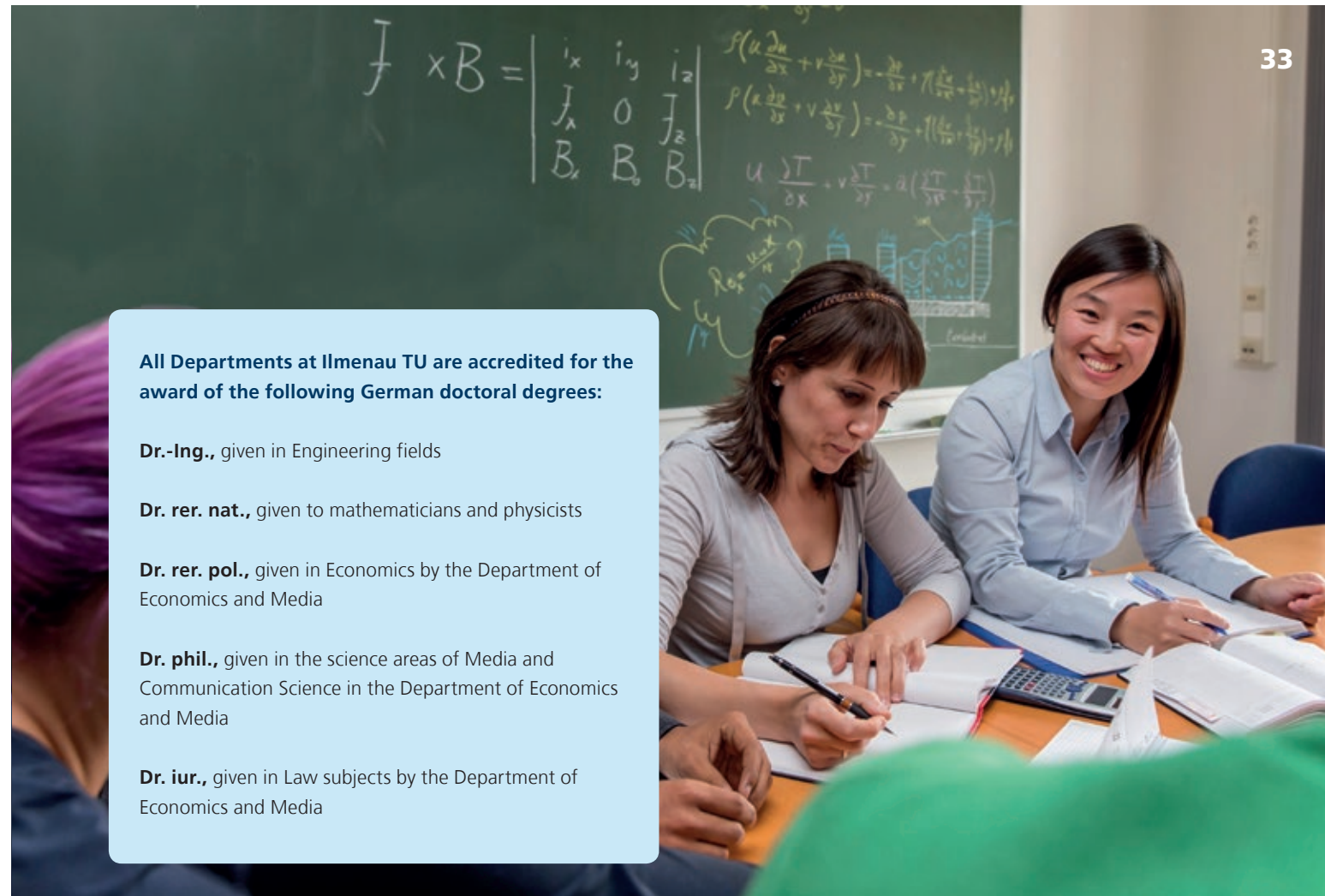
Dr.-Ing., given in Engineering fields

Dr. rer. nat., given to mathematicians and physicists

Dr. rer. pol., given in Economics by the Department of Economics and Media

Dr. phil., given in the science areas of Media and Communication Science in the Department of Economics and Media

Dr. iur., given in Law subjects by the Department of Economics and Media





Entry requirements for a PhD

Proof of MA or MSc status or of German Diplom



Formal offer of supervision
(„Betreuererklärung“), made individually by the relevant professor or the Research Training Group



Agreement of the Departmental Council



Acceptance as a PhD student by the Departmentt

The International Admissions Office of Ilmenau TU will check your degree against the guidelines provided by the German education authorities, to see whether you have a qualification equivalent to a European Master of Science or Arts degree or to the German Diplom.



Requirements as to language

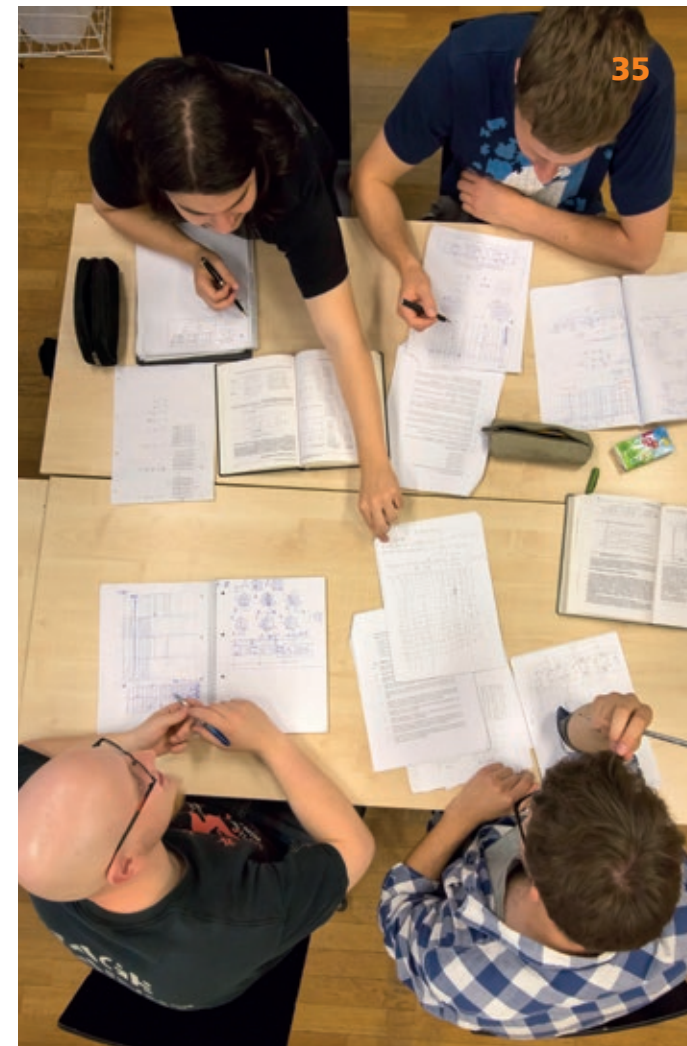
To read for a doctorate in Ilmenau, it is not absolutely necessary to know German. If your supervisor is in agreement and the Department also agrees, the thesis, the defense and any compulsory examinations may be written or conducted in English.

It will be possible for you to take classes in German in the context of the APC, under the same conditions as apply to MA or MSc students.

www.tu-ilmenau.de/en/international/postgraduates-scientists

CONTACT

International Office
International Advisory Service
☎ +49 3677 69-2023
✉ info.apply@tu-ilmenau.de



Support for PhD students



If you join us, we will help you plan your stay at Ilmenau TU. We have a virtual Welcome Center where all your questions can be answered, from the preparations (visa, legal position, health insurance, etc.) right through arrival in Ilmenau to getting settled in your accommodation in your first weeks here. Ilmenau TU is family-friendly. Our contact staff will give you real-life information on living and working here with a spouse and child or children.

🔍 www.tu-ilmenau.de/en/welcomecenter



PhD group at Ilmenau TU

This group is where new PhD students and those who have been here longer can foregather. It is a platform to help people get to know each other, exchanging views and experience. Within the group, events are organized for international PhD students and visiting academics. Questions concerning residence and doctoral studies in Ilmenau also find an answer here.

🔍 www.tu-ilmenau.de/en/welcome-center/get-connected



Living in the university town of Ilmenau

Living in Ilmenau

For students of the university, the student residences or dorms are organized by the Studierendenwerk Thüringen. The great majority are on the campus itself, which means that it will only take you 5 or 10 minutes to walk to most of the lecture rooms, to the refectory or dining hall or to the library. In comparison with other larger cities in Germany, the cost of living in Ilmenau is very reasonable. A place in one of the dorms will cost between 157 and 295 euros a month if it is one of those organized by the Studierendenwerk.

An application made before 31 July (for a start in the winter semester) or before 31 January (for a start in the summer semester) guarantees that you will be found accommodation.



The cost of living in Ilmenau

To come and study in Ilmenau as a non-EU citizen, you have to give evidence of having approx. 740 euros a month to live on. This will ensure that the local “Ausländerbehörde” (Foreigners’ Office) accord you a residence permit.

Rent	210 €
Food and drink	190 €
Health insurance, leisure pursuits	120 €
Travel costs	80 €
Clothing, telephone	110 €
Textbooks and stationery	30 €
Total per month	approx. 740 €

- Safe accommodation on campus
- Low cost of living
- Live in the heart of Germany

Semester charge

There are no tuition fees at our university!
However, each student is obliged to pay a semester charge. In Ilmenau, this charge covers some of the costs of running the Studierendenwerk Thüringen and the StuRa (Student Council) and of providing students with a free travel ticket for the semester for most of Thüringen’s trains. At present, the semester charge at Ilmenau TU is about 100 €.

Semester ticket and Thoska card

If you are a student at Ilmenau TU, you will be issued with a student ID card, which we call the Thoska card. It acts as an “open sesame”. It works as a semester ticket, enabling you to travel by train for free throughout Thüringen. It is also your library ID and your user ID for all classes and facilities at the Ilmenau TU’s sports center. And it enables you to pay the student rate for food in the students’ cafeteria.



Coming from abroad

Visas for non-EU citizens

Once you have received notification of your admission to Ilmenau TU, you will have to apply for a student visa at the German Embassy or Consulate in your home country. You should take with you the notification or invitation which has come from Ilmenau TU.

In order to obtain a visa, all students who are not EU citizens have to prove that they can finance their living expenses for the duration of their studies (this will be at the rate of about 740 euros per month). There are various ways of proving that you can do this. Before you apply for the visa, check at the German Embassy how you should do so, as this can vary from country to country.

Our local "Ausländerbehörde" (Foreigners' Office) will convert the visa into a residence permit. If you are here for a long stay, you will have to renew the permit at regular intervals.

On no account should you enter Germany on a tourist visa if your intention is to become a student here. There is no way to convert such a visa into a residence permit, which means that Ilmenau TU cannot matriculate you.

Part-time work for students

In Germany, students from abroad are allowed to work for 120 full days (at 8 hours per day) or 240 half days (at a maximum of 4 hours per day) without having to apply for a special work permit. Students who are attending a preparation course, such as German classes, are only allowed to work in the vacations. There are other rules for citizens of the EU.



Sylvain Tientcheu
FROM CAMEROON



"The prevailing atmosphere is warm and friendly, whether in the class itself or with the lecturers or the other students or with the university and town administrators. What has impressed me above all is the attitude of the professors to the students. They are always ready to help. As students, we always have a chance to speak directly to the lecturers about the material."

MSc COURSE: :
Electrical Engineering and
Information Technology

International German language courses

Students from all over the world come to Ilmenau TU in the summer of every year to improve their German. You, too, can be taught German intensively in a group of about 12 people while experiencing German life and customs. One option is to take special training in German for your own particular academic purposes. The courses are led by highly-qualified, experienced teachers. They include excursions, evening events, leisure activities and physical exercise to help you get to know what it is like to live in Germany and live among Germans.

Q www.tu-ilmenau.de/en/international-courses

"The international German course in the summer is a great warm-up for starting university."

"I came here with the intention of improving my German, but I've learnt a great deal besides. Okay, a great deal about Germany, but also about many other cultures."

The courses:

Experiencing Germany

General language course; prior knowledge required: none

Living and Studying in Germany

A course focussing on degree programs and student life at Ilmenau TU, including intercultural workshops. Prior knowledge required: German at A2 level at least

German for Technical Purpose

Introduction to German for the academic purposes of engineers with lab visits and academic lectures. Prior knowledge required: German at B2 level at least

"The academic lectures are quite superb. The teaching is excellent. I think this single month has made a huge improvement to my German."



CONTACT

International Office

International Courses

☎ +49 3677 69-2572

✉ kurs@tu-ilmenau.de

Support systems and leisure opportunities for students from abroad

The we4you mentoring programs

The support network called „we4you“ helps all students from abroad from the very moment they are accepted to the time when they have taken their degree. The staff will help you to cope with formalities, answering your questions and putting you in touch with the people you need to contact.

Buddy program – If you wish, you can be allocated a “buddy” to help you. This person will get in touch with you as soon as your application reaches us. Your personal buddy will be someone who has been at the university for a while and knows exactly how everything in Ilmenau functions. Your buddy will answer all your questions, provide support in the organization of your journey here and help you a lot in your first weeks in Ilmenau to reduce the stress of the new student role.

Erasmus mentoring – Our slogan for the exchange semesters taking place in the Erasmus+ program is “Discover the world”. Erasmus students have Erasmus mentors to help them in their subject who will also take them out on excursions and accompany them to events.

Meet-and-greet mentoring – At the beginning of every semester we keep the arrivals desk open full-time for two weeks to help the new students from abroad. The meeters and greeters will organize your arrival in Ilmenau with you, collect you at the station and get you to the TU or to your student residence. They will sort out the essentials to get you started - they will help with matriculation and take you to register at the TU computer center. They will also support you with your registration with the local authorities (town hall and Ausländerbehörde) and with opening a bank account and finding a health insurer.

German language mentoring – Would you like to brush up your German while pursuing your degree? We have two teams offering a specific mentoring system each semester to help with German. The motto is “for the students by the students”. By helping you to get into active conversation, to talk about your home and to learn about others, using language games, the mentoring boosts your learning. You will break down the language barriers faster and more easily.

Dorm mentoring – If you have booked a room in one of the student residences run by the Studierendenwerk Thüringen, there will be support from the relevant mentor, who will be on hand when you sign your rental agreement or when the Internet is not working or when there are difficulties with other people in the house.

Event mentoring – Other volunteers in we4you organize events at intervals through the semester. These include everything from induction events to country presentations, excursions, parties, matches and sports events. They are your chance to get to know people from all the corners of the world. The events are open to all students at the university.

Q www.tu-ilmenau.de/we4you



Fitness and leisure

For people who love physical exercise and for people who want to do more, Ilmenau is a perfect place to study. Besides the ice rink and indoor and outdoor swimming pools there is the chance to climb, ski, learn to dive or simply go jogging. The TU sports center is a great place to drop into after a lecture for a workout. The sports hall is state-of-the-art and there is a climbing wall, a gym and fitness room and a huge multi-purpose outdoor sports area. More than 100 sports and fitness classes are on offer, including yoga, basketball, judo, karate, oriental dance, swimming, football and slackline.

Q www.tu-ilmenau.de/usz

Social life is organized into a variety of student clubs which organize many events all year around including live concerts. Ilmenau has, of course, the usual facilities like a cinema, cafés and shops. In this town with strong Goethe associations, there are always new exhibitions and talks or readings for the culture vulture.

Other languages

Maybe you would like to add to or improve your knowledge of foreign languages while you are here. If so, come to the Language Center, which offers not only German and English but also Russian, Spanish, French, Chinese and yet more languages.

Q www.tu-ilmenau.de/spracheninstitut

If you have a child or children

For more than 40 years, Ilmenau TU has run a crèche and kindergarten, the “Kita”, attended by our “Little Imps”. There are about 60 children belonging to students or staff of Ilmenau TU being cared for. The nursery staff provides full-time day care of the most loving kind for little ones from 8 weeks to 3 years old. There is a late care system to help parents who have evening lectures to attend.

Q www.tu-ilmenau.de/sw_sf



Ilmenau TU - *a degree with a view*

Reasons to come to Ilmenau TU



Excellence in teaching and research - ranked frequently as outstanding

Compact campus

Situated at the heart of Germany and of Europe

State-of-the-art buildings, lab equipment and seminar rooms

Start-to-finish support on a personal basis - we4you international network

Plentiful contact and collaboration with other universities in Germany and abroad

Follow your studies and research living in an international environment

No tuition fees

Low costs of accommodation and living

Wide variety of sports and leisure pursuits

Unique range of student and local cultural life

Degrees that will boost your career and your whole future



PUBLISHING DETAILS

Published by:

President, Technische Universität Ilmenau
© TU Ilmenau 05/2017

Produced by:

International Office
Email: auslandsamt@tu-ilmenau.de

Photographs:

TU Ilmenau, Michael Reichel, Leo Warnow, Sebastian Trepesch, Fraunhofer IDMT, Chris Liebold, Stefan Pöhler, Christoph Gorke, Dörthe Hagenguth, Tina Bergknapp

Printed by:

Brandt Druck e.K

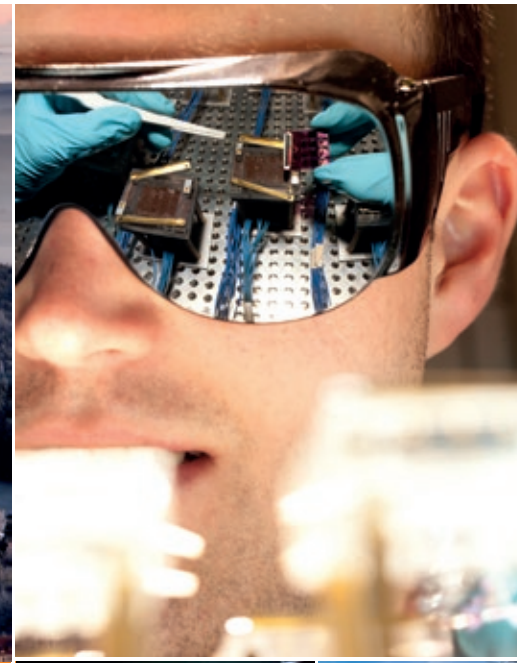
Translation:

Susan Kubitz

Designed by:

formplusraum.de | Torsten Weilepp





Studying in **ILMENAU**

www.tu-ilmenau.de

thi
TECHNISCHE UNIVERSITÄT
ILMENAU