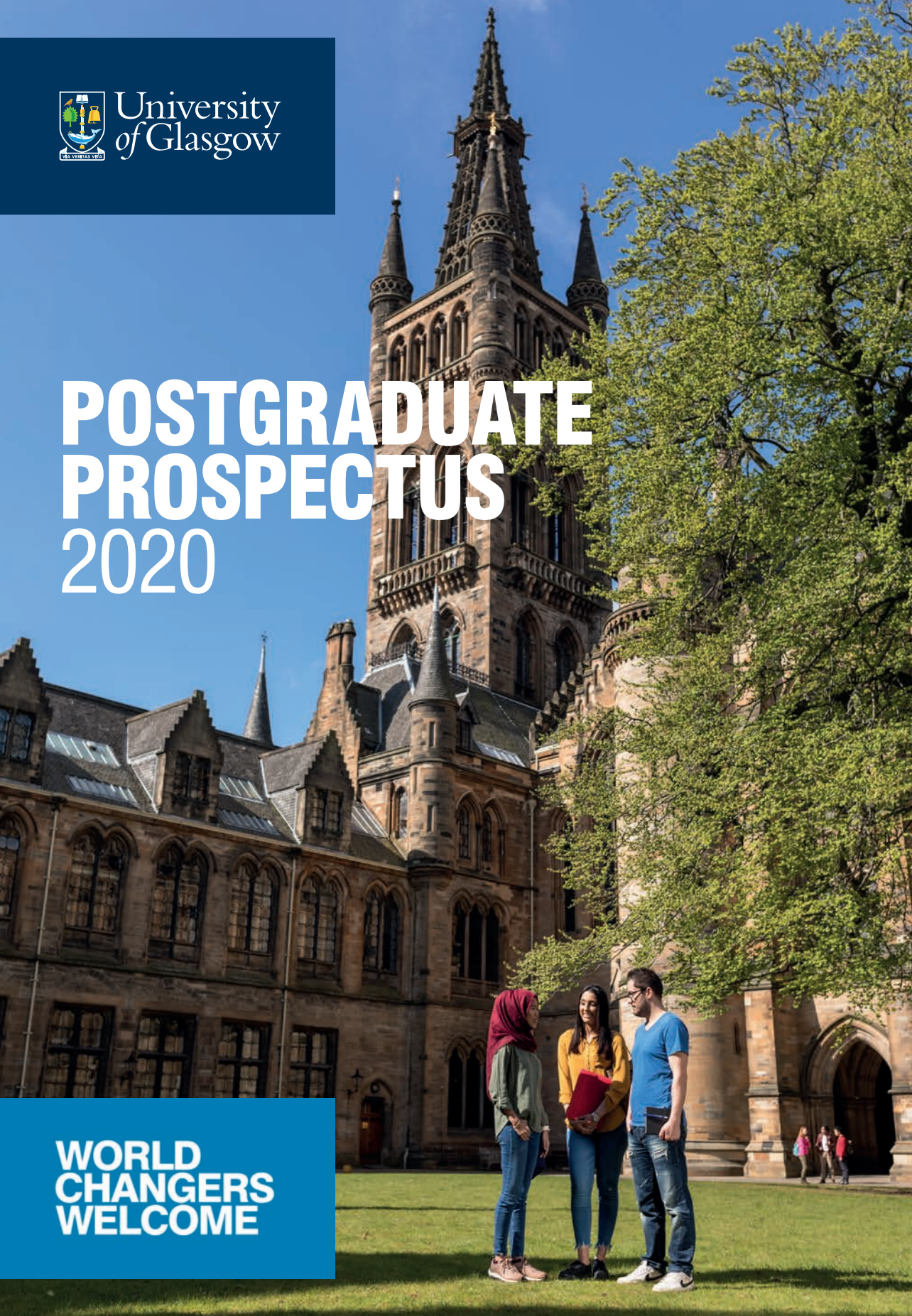




University
of Glasgow

POSTGRADUATE PROSPECTUS 2020

**WORLD
CHANGERS
WELCOME**



ONE OF THE
TOP 100
UNIVERSITIES
IN THE WORLD

JOINT 1ST IN
THE RUSSELL
GROUP FOR
STUDENT
SATISFACTION

NSS 2018

29,000
STUDENTS
FROM
OVER 140
COUNTRIES

A MEMBER OF
THE RUSSELL
GROUP OF
RESEARCH-
INTENSIVE UK
UNIVERSITIES

ESTABLISHED
IN 1451

90% OF
POSTGRADUATE
STUDENTS IN
EMPLOYMENT
OR FURTHER
STUDY SIX
MONTHS AFTER
GRADUATION

(DLHE 2016/17)

Introducing our University	2
Our campuses	4
Our world-changing research	6
Student life	8
Future World Changers	10
Your learning & research environment	12
Life beyond the books	14
Support along the way	16
Focused on your future	18
Glasgow, gateway to Scotland	20
People Make Glasgow	22
Scotland is Now	24
How to apply	26
Entry requirements	28
Postgraduate taught degrees: your steps to application	30
Postgraduate research degrees: your steps to application	32
Fees & cost of living	34
Funding & scholarships	36
A-Z of subjects	38
A-Z of programmes	66
Further information	71

67TH
QS WORLD
UNIVERSITY
RANKINGS 2020

GLASGOW IS ONE OF ONLY FOUR
UK UNIVERSITIES TO ACHIEVE A
QS 5 STARS PLUS
RATING FOR EXCELLENCE

JOINT 93RD
TIMES HIGHER
WORLD UNIVERSITY
RANKINGS 2019



INTRODUCING OUR UNIVERSITY

**The University of Glasgow
has been changing the world
for more than 560 years.**



WE ARE THE
4TH OLDEST
ENGLISH-
SPEAKING
UNIVERSITY
IN THE WORLD

OUR CAMPUSES

Gilmorehill

The University moved to its current site at Gilmorehill (pictured above) in 1870. This is home to the majority of our teaching and research facilities and will soon be expanded as part of our £1 billion campus development programme to include a mix of modern research, teaching and public spaces.

At the centre of Gilmorehill lies the stunning Gilbert Scott building with its iconic bell tower, which has become one of Glasgow's most notable landmarks. Based in the heart of the West End, the Gilmorehill campus is surrounded by shops, cafes, bars, restaurants, supermarkets and a cinema, and is well served by transport links to the nearby city centre.

Dumfries Campus

Our School of Interdisciplinary Studies in Dumfries, south-west Scotland, offers several postgraduate programmes and research study opportunities. By choosing to study at Dumfries Campus, you will benefit from the academic excellence of the University in a progressive, rural campus environment. The interdisciplinary teaching and friendly residences help you to get to know students and staff from all disciplines quickly and really feel at home.

For more information, see glasgow.ac.uk/dumfries.

Garscube Campus

Spanning 80 hectares at the north-west boundary of the city lies our beautiful Garscube estate, just four miles from the University's Gilmorehill campus. Garscube is home to the School of Veterinary Medicine, four research institutes in the College of Medical, Veterinary & Life Sciences and outdoor sports facilities.

For more information, see glasgow.ac.uk/schools/vet and glasgow.ac.uk/mvls.

OUR WORLD-CHANGING RESEARCH

The Glasgow Research Beacons bring together our ambitious and inspiring researchers from across disciplinary boundaries to address the complex challenges which face our world.



glasgow.ac.uk/research

ADDRESSING INEQUALITIES

We are working to address inequality, deprivation and marginalisation around the world.

We are leading an international consortium to strengthen capacity to address urban, health and education challenges in neighbourhoods across fast-growing cities in Africa and Asia which face growing poverty and inequality.

ONE HEALTH

Through an integrated "one health" approach we are tackling some of the world's most devastating diseases.

An estimated 59,000 people die from canine rabies every year. Our work on rabies is contributing to the World Health Organization's plans to end human deaths from dog-transmitted rabies by 2030.

FUTURE LIFE

Working across disciplinary boundaries, we are developing new technologies to improve our world.

Reducing the impact of diseases such as malaria and rabies is a global priority. We have developed a low-cost, paper-based diagnostic device to quantify levels of infection using DNA.

THE NANO & QUANTUM WORLD

We are transforming nano and quantum science into revolutionary technologies for a better world.

The discovery of gravitational waves changed how we observe the universe, marking a new era of astronomy. We were part of one of the most exciting scientific breakthroughs of the century.

CULTURAL & CREATIVE ECONOMIES

Our research impacts on the global cultural and creative economy.

We created the world's first historical thesaurus. A unique resource which enhances our understanding of the English language, the thesaurus contains almost every word from Old English to the present day.

PRECISION MEDICINE & CHRONIC DISEASES

We are pioneering new treatments and precision diagnostics for chronic diseases.

Over 1,200 people are diagnosed with pancreatic cancer every day. We made a breakthrough reclassification, identifying four key subtypes. This will lead to more targeted therapies, providing better treatment.

STUDENT LIFE

Glasgow is a place that inspires ambitious people to succeed. A place where inspiring minds can develop their ideas. A place where people make discoveries that change the world.



FUTURE WORLD CHANGERS

Our students of today are the world changers of tomorrow. At Glasgow, we strive to nurture your potential, support your ambitions and inspire you to change the world. Meet four of our Future World Changers who want to improve lives and make a positive impact on the world.

Find out more at glasgow.ac.uk/worldchangers



SOFIAT

STUDYING: COMPUTING SCIENCE, PhD
NATIONALITY: NIGERIAN
AMBITION: EMPOWERING YOUNG SCIENTISTS

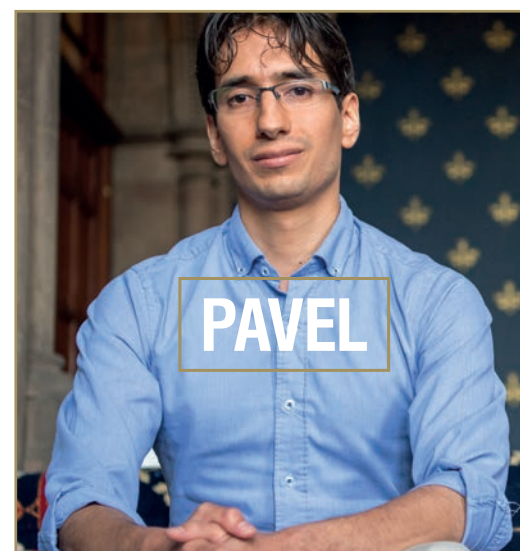
I am at the final stage of my doctoral research programme in Computing Science. In a nutshell, my research involves employing tools from mathematics and computer science to design efficient algorithms. I enjoy programming and am passionate about using my skills to help people, which was what led to my world-changing ambition. PWSAfrica is an educational initiative aiming to empower scientists in Africa with programming skills as a tool for scientific development, with the hope that they will grow to become innovative thinkers who will drive Africa forward on the frontiers of science and technology. The fact that I was named a Future World Changer has been a constant source of motivation for me and also for the young scientists in Africa. I have been invited to speak at several University events, which has helped project my ambition to a much wider audience.



ELI

STUDYING: CRIMINOLOGY & CRIMINAL JUSTICE, MSc
NATIONALITY: AMERICAN
AMBITION: EXPLORING CULTURAL IDENTITY LOSS

I came to the University of Glasgow for its accredited and highly regarded criminology programme. However, the amount of opportunities offered to you outside of the programme really makes the student experience feel more inclusive and allows you to meet people from all over the University. As a result of this, some of my closest friends are from degrees that I would normally never come across. One of the best things about my programme is how many of the staff encourage critical thinking and motivate you to look outside of traditional criminological thought to find new methods of approaching existing problems. My personal ambition involves examining experiences associated with loss of cultural heritage during conflicts. Being a Future World Changer is extremely motivating and has shown me how to highlight the uniqueness of my ambition and how it can make a difference to the world.



PAVEL

STUDYING: CLINICAL TRIALS & PRECISION MEDICINE, MSc
NATIONALITY: MEXICAN
AMBITION: FIGHTING INFECTION

Studying at UofG has given me the opportunity to meet numerous international students and work closely with them. This has allowed me to develop a keen sense of confidence and interculturality within myself. What I like best about the Clinical Trials & Precision Medicine programme is that for my dissertation I have had the opportunity to work closely with research staff at the Stratified Medicine Scotland Innovation Centre, which leads precision medicine in Scotland. This has been one of the best academic and professional experiences I've ever had. My ambition is to develop a subcutaneous implant for the controlled release of antibodies that could be of use in the improvement of immunoglobulin replacement therapy and monoclonal antibodies therapy. Being a Future World Changer has helped me to share and draw attention to my project while improving my skillset.



DANIELLE

STUDYING: TEXT & IMAGE STUDIES, PhD
NATIONALITY: AMERICAN
AMBITION: (RE)WRITING HISTORY

I'm a PhD student in the School of Modern Languages & Cultures. My thesis project involves analysing representations of gender, class and race in an early 19th century Glasgow-published caricature periodical (basically, I spend a lot of time in the archives and, among other things, get to read comic books for research!). I'm not sure I could say enough about how much I love my programme. Everyone is supportive and helpful and there is a strong sense of community among postgraduate researchers. My thesis highlights the importance of expanding analytical views in order to ensure those aspects don't get missed in the first place. Being a Future World Changer has shown that you don't have to do something groundbreaking to help change the world for the better, and that's an important message for everyone to hear.



**GLASGOW
WAS AWARDED
5 QS STARS
FOR TEACHING**
(2019)

YOUR LEARNING & RESEARCH ENVIRONMENT

Research community

As a Russell Group university, research is at the heart of everything we do. Our PhD students are collaborators and colleagues, driven by the same goals, curiosity and passion. We are a research community and we have created an inspiring environment which supports our researchers in their professional and personal development.

Graduate Schools

Each of our four colleges has its own Graduate School which offers a hub for all postgraduate taught and research students.

They exist to foster postgraduate research and teaching of the highest standard, facilitating student productivity and development while promoting wellbeing and providing excellent support.

Academic Development Service (LEADS)

Our LEADS advisers can help you develop your academic skills through workshops and one-to-one consultations on essay writing and exam preparation. For more information, see glasgow.ac.uk/leads.

Online learning

If you are looking for flexibility in your learning, we offer a variety of credit-bearing programmes online. You'll be fully guided through the process and will receive the same qualifications as the campus-based equivalent. For more information, see glasgow.ac.uk/onlineprogrammes.

James McCune Smith Learning Hub

We're creating a campus to inspire the next generation of world changers. A 14-acre site beside our main campus is now being developed with a planned total investment of £1 billion.

Our flagship James McCune Smith Learning Hub is the first building to be delivered through our campus development programme, with completion due by summer 2020. As well as increasing our teaching capacity, this modern study space will offer flexible spaces for clubs and societies, conferences and events, becoming the student-focused heart of the campus.

- Round-the-clock access
- Capacity for 2,500 students
- 500-seat lecture theatre
- Interactive teaching spaces
- Cafe

See glasgow.ac.uk/explore.

OVER 250
CLUBS AND
SOCIETIES,
FROM TEDx
TO PHYSICS
TO CAPOEIRA
DANCING

glasgowstudent.net



The Gilchrist Postgraduate Club offers a dedicated social space for postgraduate students along with individual study booths and a seminar room.

Be active

At UofG Sport, we know how much staying fit and active can help your studies. That's why our programmes are designed with you in mind and are flexible enough to fit around your schedule.

Facilities include:

- Pulse – our cardio conditioning fitness area
- PowerPlay – our premium conditioning and strength suite
- Revolve – our indoor cycling studio featuring a huge video wall and motivating instructors
- 25m swimming pool with steam and sauna
- Two large sports halls
- Six grass pitches and two synthetic pitches
- Over 100 fitness classes per week
- Expert training and guidance to help you meet your goals

See glasgow.ac.uk/sport.



LIFE BEYOND THE BOOKS

Dedicated postgraduate club

The Gilchrist Postgraduate Club provides a relaxed environment to meet friends, participate in group study or take a break. Facilities include a seminar room which can be booked by postgraduate students and a cafe bar with barista coffee, tea, alcohol and food. Events for postgraduate students are also held in the club. See gilchristpgclub.org.

Choose from two unions

Queen Margaret Union hosts new music, local bands, big-name acts, student-run club nights and a variety of events from quizzes to open mic nights and a spoken word night. It is also home to three catering outlets. See qmunion.org.uk.

Glasgow University Union has everything a student needs within the stunning old Union building and

purpose-built extension nightclub, with no fewer than nine bars, two libraries, a debating chamber, snooker and pool hall, convenience store, cafeteria and coffee shop. See guu.co.uk.

CHAT TO CURRENT STUDENTS ABOUT LIFE AT GLASGOW

glasgow.ac.uk/askastudent

Accommodation

Accommodation Services are here to help you find a suitable place to live and, providing you've applied for residence and met the conditions of your offer of study before 22 August, we guarantee a place in our university residences.

You have options in four residences, located between a two-minute and a 25-minute walk from our main Gilmorehill campus.

Benefits include:

- dedicated residences for postgraduate students only
- an excellent way to make new friends and the opportunity to share accommodation with other University of Glasgow students
- round-the-clock access to trained University Living Support staff
- membership of the University's sport facilities included in your fees
- 24/7 internet access incorporating wi-fi in all rooms
- small number of furnished self-contained flats for couples or families.

If you'd prefer to find accommodation through a private landlord, we can offer advice and help. See www.glasgowpad.org.

To find out more, see glasgow.ac.uk/accommodation.

Maclay Residences is one of our self-catered en-suite residences exclusively available to postgraduate students.

SUPPORT ALONG THE WAY

The Students' Representative Council

The Students' Representative Council (SRC) provides high-quality, impartial advice on a range of welfare and academic issues. See glasgowstudent.net.

Student services

Our Student Services Enquiry Team is here to help you make the most of your time at Glasgow. We can

help with everything from the registration process to support with welfare and pastoral issues. See glasgow.ac.uk/students.

International student support

Our International Student Support team provides an advisory service year-round. This includes a welcome desk on campus in September and January for any questions or concerns and a full

orientation programme to ensure you settle into University life as quickly and as smoothly as possible. See glasgow.ac.uk/international/support.

University Library

Open daily from 7.15am to 2.00am with online access 24/7, the University Library has one of the largest collections of books in Europe. See glasgow.ac.uk/library.

FOCUSED ON YOUR FUTURE

We want you to feel inspired and empowered to prepare for your chosen career. At Glasgow, we offer professional careers advice, coaching, resources and support to help you find your dream job.



Careers support

A wide range of coaching and guidance support for all of your career development needs.



Inspiring events

We run a series of events and fairs with graduate employers, ranging from major global organisations to small local companies.



Internship Hub

Through the Internship Hub, we can help to find you an internship. Internships expand your network and enhance your career prospects.



Got a business idea?

We provide support for enterprising students. We offer one-to-one mentoring and competitions, or assist during the actual business start-up process.



9,000 alumni from 100 countries

The Network offers you the chance to interact with our alumni community, providing networking opportunities and invaluable advice.



Bespoke careers support for research students

We offer specialist support for our research students, including careers workshops and training sessions.

Where our graduates are now

In 2017, 90% of our postgraduates (taught and research) were in employment or study six months after graduation (DLHE 2016/17).

**Scotland is
the most
beautiful
country in
the world**

Rough Guides, 2017

GLASGOW, GATEWAY TO SCOTLAND

Glasgow provides the ideal base from which to explore the length and breadth of the country. Known for its stunning landscapes, rich history and warm, welcoming people, Scotland is a passionate and innovative country. From spectacular castles to world-renowned festivals, there are plenty of attractions to experience.

TIME OUT NAMED GLASGOW 1ST FOR FRIENDLINESS AND AFFORDABILITY (2019)



Ashton Lane, a lively cobbled lane next to the University which is packed with bars, restaurants and a cinema.



Kelvingrove Park, on the banks of the River Kelvin next to the University.



Buchanan Street, part of Glasgow's Style Mile.

PEOPLE MAKE GLASGOW

West End

The University's main campus is nestled within Glasgow's cosy and cultural West End, home to bohemian Byres Road and the Instagrammable Ashton Lane. Both of these are great spots to explore, with plenty of student-friendly bars and restaurants.

Shopping

Glasgow is a shopper's paradise, with the city catering for all tastes and budgets. From the biggest high street brands such as Urban Outfitters and Zara to vintage wares, from one-off speciality stores to exclusive designer gear – you will find it all in Glasgow.

Museums and art galleries

Glasgow has over 20 fantastic museums and galleries, where visitors of all ages can enjoy one of the richest and most varied collections in Europe. Special mention to The Hunterian, which is located on campus and home to one of the largest collections outside the national museums.

Parks

With a name meaning "Dear Green Place" in Gaelic, the city has over 90 parks and gardens to explore, with many housing some of the city's top attractions. So whether you're looking for a tranquil spot to study, a beautiful viewpoint of the

city, or even somewhere to spot a Highland cow, you'll be spoilt for choice.

Sports

Glasgow is synonymous with sport. In fact, the city recently won the award for the world's "Best Small City for hosting sporting events" (SportBusiness International, 2018).

As successful co-host of the 2018 European Championships, the city is now looking ahead to hosting duties of UEFA EURO 2020.

To find out more, see peoplemakeglasgow.com.



The SSE Hydro, ranked in the top 10 arenas globally (Pollstar).

Music and nightlife

As the UK's first UNESCO City of Music, Glasgow is a place where music is not simply confined to the four walls of venues – it's the beating heart of the city. Our top picks are:

- Barrowland Ballroom
- King Tut's Wah Wah Hut
- SWG3
- The SSE Hydro

Eating out

Glasgow has an ever-evolving food and drink scene, with options to suit all tastes and pockets. The Finnieston neighbourhood (next to the University) is considered the city's "foodie quarter" with a brilliant mix of cool, quality and affordable venues. Glasgow is also recognised as one of the UK's most vegan-friendly cities with many eateries dedicated to serving plant-based menus, and lots offering vegan options.



The Three Sisters, Glencoe.

SCOTLAND IS NOW

Outdoor activities

Scotland's land and coast were made for exploration and adventures. From world-class watersports and walking, to cycling and mountain climbing, the possibilities for getting active in Scotland's magnificent great outdoors are endless.

Beaches

You'll find some of the UK's most spectacular beaches dotted along Scotland's entire coastline.

Whether you decide to take part in watersport activities or just go for a relaxing walk, keep your eyes peeled for marine life in the waters and seabirds flying overhead.

Attractions

Scotland is filled with attractions to suit every taste and budget, including iconic castles, world-class museums and galleries, fascinating heritage sites and beautiful gardens.

Film and TV locations

Scotland has played a starring role on the big and small screen, as the filming location for top films and TV shows including *Outlaw King*, *Mary Queen of Scots*, *Skyfall*, *Outlander*, *Harry Potter* and many, many more.

To find out more, see visitscotland.com.



Edinburgh, the capital city of Scotland.



Eilean Donan Castle, Scottish Highlands.

Our top 5 events in Scotland

Edinburgh Festivals

Over the summer, seven spectacular festivals take place in Scotland's capital including the world-famous Fringe, the largest arts festival in the world.

Highland Games

Experience Scottish culture and traditions at over 70 events across the country, taking place between May and September.

Hogmanay

No other nation celebrates the New Year quite like Scotland. Ring in the bells at traditional and unique events like Edinburgh's Hogmanay, Inverness's Red Hot Highland Fling, Stonehaven's Fireballs, Biggar Bonfire and The Kirkwall Ba' Game in Orkney.

Burns Night

Scotland celebrates its National Bard, Robert Burns, every year on and around 25 January. Special events include the Burns An' A' That Festival across Ayrshire but it's likely you'll find "haggis, neeps and tatties" on the menu in most Scottish eateries up and down the country.

Whisky Festivals

Get a taste of Scotland's national drink at a whisky festival including the Spirit of Speyside Festival, Glasgow Whisky Festival and Fèis Ìle, The Islay Festival of Music and Malt, and at events across the country during Whisky Month, which takes place in May.

HOW TO APPLY

ENTRY REQUIREMENTS

Entry requirements

Applicants for the majority of postgraduate degrees should have a 2.1 Honours degree (or equivalent).

A Masters qualification may also be required in some cases for PhD study. Work experience may also be taken into account.

International applicants can check any country-specific requirements at glasgow.ac.uk/international.

Improving competence in English

Before you are admitted to the University, we require you to show competence in English, if English is not your first language. We set a minimum English language proficiency level and accept qualifications from around the world.

- IELTS (Academic): 6.5 (with no sub-test less than 6)
- TOEFL iBT: 90; with sub-tests no less than: Reading: 20; Listening: 19; Speaking: 19; Writing: 23
- C1 Advanced (formerly Cambridge Certificate of Advanced English): 176 overall: no sub-test less than 169
- C2 Proficiency (formerly Cambridge Certificate of Proficiency in English): 176 overall: no sub-test less than 169
- PTE Academic (Pearson Test of English, Academic test): 60; no sub-test less than 59.

Please note that some programmes require a higher standard of English – check the web page of your programme of interest for details.

We provide courses to help you reach a proficiency level equivalent to the required IELTS score through our English for Academic Study (EAS).

Pre-sessional EAS courses can last 5–36 weeks depending on your entry level. These courses have a strong study skills component and focus on academic English to help you adapt to our style of learning and teaching. See glasgow.ac.uk/eas.

Glasgow International College

If you're an international student but not quite ready to study at Glasgow, our partner institution, Glasgow International College, offers pre-Masters programmes in the Arts, Business, Engineering, Law, Sciences and the Social Sciences to help you achieve the required standards for admission to a range of one-year Masters programmes at the University. See glasgow.ac.uk/gic.



POSTGRADUATE TAUGHT DEGREES

Your steps to application

Step 1

Choose a programme

Types of postgraduate taught degrees

With more than 300 taught options to choose from, you should be able to find a programme that matches your interests.

- Taught Masters degrees usually last for one year (full-time study) or two years (part-time study) and the final assessment is often based on the submission of a research-based dissertation.
- Most Postgraduate Diplomas last for nine months full-time.
- Postgraduate Certificates generally last for four to five months full-time.
- Many Postgraduate Diploma and Certificate programmes are available on a part-time basis.
- We also offer several International Masters programmes which are delivered in conjunction with our partners. These usually last for two years (full-time study). Erasmus Mundus scholarships are available for well-qualified applicants.

Our programmes

A full list of our programmes by subject area is available on pages 38–65 or on our website: glasgow.ac.uk/postgraduate.

Step 2

Consider what funding you will require

Fees and funding information is available on pages 34–37.

Step 3

Submit an application

Before starting your application, we strongly recommend that you review any relevant information at glasgow.ac.uk/postgraduate/apply (including the admissions policy) and our FAQs at glasgow.ac.uk/postgraduate/frequentlyaskedquestions. Applications are made via our online application form. Before submitting, you may save and return to your application as many times as you wish within 42 days.

Apply now: glasgow.ac.uk/postgraduate/apply.

Application deadlines

The application deadline can vary between programmes so please ensure that you check the programme web page for details.

Contact us

For further information, complete our online enquiry form: glasgow.ac.uk/enquirenow.



POSTGRADUATE RESEARCH DEGREES

Your steps to application

Step 1

Identify a potential supervisor/topic

Postgraduate degrees can generally be divided into Research Masters and Doctoral (PhD) degrees. Students undertaking a research degree are expected to make a significant contribution to knowledge or understanding in their field of study.

It's a good idea to identify a potential supervisor and contact him or her to discuss your research proposal before you apply. Explore relevant academic staff members' subject interests at glasgow.ac.uk/research/opportunities/search.

Step 2

Consider what funding you will require

Fees and funding information is available on pages 34–37.

Step 3

Submit an application

Before starting your application we strongly recommend that you review any relevant information for prospective postgraduate students on the web pages of the graduate school to which you are applying. Applications are made using our online form. You can save and return to your application as many times as you wish within 42 days. Please note, even if you have spoken to an academic member of staff about your proposal, you still need to submit an online application form.

Apply now: glasgow.ac.uk/research/apply.

Application deadlines

We accept applications for the majority of research degrees all year round. However, some research programmes and all funding bodies have specific deadlines. See glasgow.ac.uk/howtoapplyforaresearchdegree.

Contact us

For further information, complete our online enquiry form: glasgow.ac.uk/enquirenow.



FEES & COST OF LIVING

Tuition fees

Our tuition fees for postgraduate taught degrees are detailed in the table below. Specific fees are available on individual programme pages: glasgow.ac.uk/postgraduate/taught.

For postgraduate research degrees, see glasgow.ac.uk/fees.

Tuition fees (2020–21)

Full-time students from the UK/EU per year

Most arts, social & political sciences, and life sciences taught programmes (non-clinical)*	£8,500
Most science & engineering taught programmes*	£9,750
Most Adam Smith Business School taught programmes*	£11,800
Research programmes	See website
MBA	£17,500

Full-time international students (non UK/EU)

Most taught or research programmes for arts or social sciences*	£18,370
Most Adam Smith Business School taught programmes*	Varies between £21,920 and £28,420
Most taught or research programmes for science & engineering*	£21,920 or £23,500
Most taught or research programmes for medical, veterinary & life sciences (non-clinical)*	£21,020 or £23,500
MBA	£28,420

Cost of living**

Average cost per month of living in self-catered accommodation

Accommodation	£550
Food	£180
Clothes	£70
Travel in Glasgow	£40
Laundry/stationery etc	£30
Telephone/internet	£40
Entertainment	£120
Total	£1,030

Additional costs per year

Books	£400
UK travel	£300
Total	£700

* Please note tuition fees may be higher for certain programmes. See glasgow.ac.uk/fees for full details. ** The living costs quoted are not related to funding requirements for entry clearance. At the time of going to press, UK Visas and Immigration (UKVI) states that Tier 4 visa applicants planning to study outside London must demonstrate that they have funds to cover living costs for up to a maximum of nine months (depending on the length of the course) at £1,015 per month. For up-to-date information on entry clearance requirements, see gov.uk/tier-4-general-visa.



EU students

As you'll be aware, the UK is planning to exit the European Union on 31 October 2019. At the time of going to print, a withdrawal agreement has not been agreed. However, the Scottish Government has confirmed that fees for EU students commencing their postgraduate studies in 2020/21 will be at the same level as those for UK students. Students will be admitted as UK/EU fee status students and retain that status for the duration of their studies. EU students enrolling on Masters degrees in academic year 2020/21 continue to remain eligible for a Postgraduate Tuition Fee Loan from the Student Awards Agency for Scotland (SAAS).

The University of Glasgow is a proudly international institution, committed to being open and welcoming to students from all nations.

For up-to-date information, advice and guidance as decisions are made, please see glasgow.ac.uk/study/eu.



FUNDING & SCHOLARSHIPS

Scholarships

As a commitment to supporting new students and rewarding academic excellence, we provide a wide range of financial support.

Some of the scholarship schemes you may be eligible for are listed below.

- **Glasgow Alumni Discount:** 10% fee discount on both postgraduate taught and research programmes for alumni.
- **Postgraduate Talent Scholarship:** £2,000 for Scottish students who could face financial difficulties in taking up a place to study a taught Masters programme.
- **PGT Excellence Scholarship:** £5,000 tuition fee discount for taught programmes is available for UK and EU students.
- **University of Glasgow African Excellence Award:** Full fee waivers for African students.
- **Humanitarian Scholarship:** Full fee waiver and £5,000 per year stipend for students living in the UK on humanitarian grounds and facing challenges in progressing into Higher Education. University accommodation may also be provided subject to criteria.
- **Refugee Scholarship:** £5,000 annual stipend for students who hold refugee status.
- **University International Leadership Scholarship:** £10,000 tuition fee discount for taught programmes is available for international students.

Alternatively, you may be able to apply to the Student Award Agency for Scotland for a Postgraduate Tuition Fee Loan to help with the cost of fees. For a list of eligible degree programmes, see saas.gov.uk.

To search for scholarship and funding opportunities, see glasgow.ac.uk/scholarships.

Graduate schools

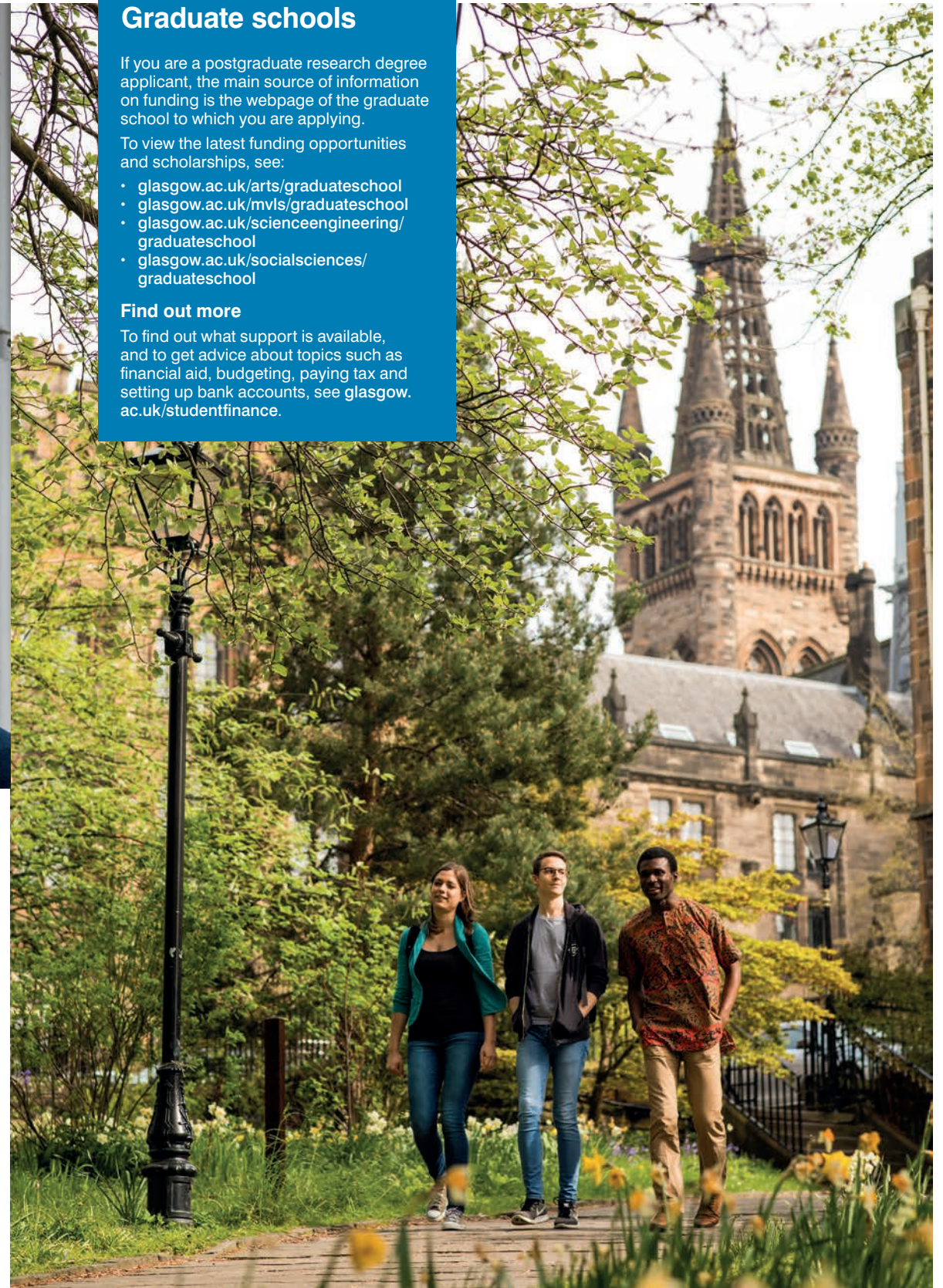
If you are a postgraduate research degree applicant, the main source of information on funding is the webpage of the graduate school to which you are applying.

To view the latest funding opportunities and scholarships, see:

- glasgow.ac.uk/arts/graduateschool
- glasgow.ac.uk/mvls/graduateschool
- glasgow.ac.uk/scienceengineering/graduateschool
- glasgow.ac.uk/socialsciences/graduateschool

Find out more

To find out what support is available, and to get advice about topics such as financial aid, budgeting, paying tax and setting up bank accounts, see glasgow.ac.uk/studentfinance.



Accounting & Finance
Archaeology
Biodiversity, Animal Health & Comparative Medicine
Cancer Sciences
Cardiovascular & Medical Sciences
Celtic & Gaelic
Central & East European Studies
Chemistry
Classics
Computing Science
Creative Writing
Dentistry
Economic & Social History
Economics
Education
Engineering
English Language & Linguistics
English Literature
Environment, Sustainability & Tourism
Film & Television Studies
Geographical & Earth Sciences
Health & Wellbeing
History

History of Art
Infection, Immunity & Inflammation
Information Studies
Law
Life Sciences
Management
Mathematics & Statistics
Media & Cultural Policy
Medicine
Modern Languages & Cultures
Molecular, Cell & Systems Biology
Music
Neuroscience & Psychology
Nursing & Health Care
Philosophy
Physics & Astronomy
Politics & International Relations
Scottish Literature
Sociology
Theatre Studies
Theology & Religious Studies
Urban Studies
Veterinary Medicine
War Studies

A-Z OF SUBJECTS

ACCOUNTING & FINANCE

Accounting & Finance at Glasgow has had an international reputation for high-quality research and teaching since 1925.

We are a broad subject group, bringing together expertise in the main areas of:

- Finance and market-based research
- Financial reporting
- Management accounting and control.

We also have specialist knowledge of accounting education, accounting history, auditing and corporate governance. If you study with us, you will gain career-enhancing professional skills and a degree accredited by all the major UK professional accounting bodies.

As a postgraduate student in Accounting & Finance, you will have access to excellent financial databases including Bloomberg, WRDS Compustat, CRSP, Datastream, BoardEx, FAME and Thomson ONE.

Accounting & Finance boasts three new computer laboratories which are equipped with accounting software Sage Accounts, statistical software such as STATA and Minitab, bibliography software such as EndNote, qualitative research software such as NVivo, and online data sources such as Company Analysis. You will have access to a dedicated Social Sciences employability officer who can help you to enhance your employability and related skills.

Postgraduate taught programmes

- Corporate Governance & Accountability (MSc)
- International Accounting & Financial Management (MAcc)
- International Corporate Finance & Banking (MSc)
- International Finance (MFin)
- International Financial Analysis (MSc)
- Financial Technology (MSc)

Research opportunities

We offer PhDs in the following research areas:

- Accounting
- Finance (Accounting and finance)
- Accounting and finance.

You may want to identify a potential supervisor and contact him or her to discuss your research proposal before you apply.

✉ business-accounting-finance@glasgow.ac.uk
🌐 glasgow.ac.uk/business/postgraduate

ARCHAEOLOGY

Archaeology at Glasgow is a vibrant community of students and staff working together to investigate our shared past and its role in contemporary society.

Archaeology has been taught at Glasgow for over 50 years and is recognised for its commitment to excellent teaching and research. It is ranked 1st in Scotland (Complete University Guide 2020).

We support diverse student and research interests by providing opportunities to take courses in and collaborate with colleagues in other disciplines.

We have strong links with the University's museum and art gallery, The Hunterian, and numerous private and public organisations.

You will benefit from field experience, placements, and a variety of visiting guest speakers.

Postgraduate taught programmes

Our Masters programmes address practical, theoretical and scientific methodologies through a collection of seminars, work placements and fieldwork.

- Ancient Cultures (MSc)
- Archaeology (MSc)
- Conflict Archaeology & Heritage (MSc, PgDip)
- Material Culture & Artefact Studies (MSc, PgDip)
- Museum Studies (MSc, PgDip, PgCert)

Research opportunities

We offer the following research study options: PhD, MLitt, MPhil and MRes.

Our research areas include:

- Scottish archaeology, particularly in the Mesolithic and Neolithic periods and the Celtic, Pictish and Viking areas
- Prehistoric artefacts, notably textiles and clothing
- Mediterranean and Near Eastern archaeology with foci in Italy, Cyprus and Iraq
- Landscape archaeology
- Historical archaeology, particularly medieval Europe and contemporary Europe
- Battlefield and conflict archaeology
- Digital and computational archaeology.

You may want to identify a potential supervisor and contact him or her to discuss your research proposal before you apply.

✉ humanities-pg@glasgow.ac.uk
🌐 glasgow.ac.uk/subjects/archaeology

BIODIVERSITY, ANIMAL HEALTH & COMPARATIVE MEDICINE

Biodiversity, Animal Health & Comparative Medicine combines expertise in animal biology and ecology with extensive knowledge of comparative and veterinary medicine.

Unique in the UK, the range of our research spans multiple biological levels, integrating:

- Molecules and cells
- Individuals
- Human populations and ecosystems.

Given the threats posed by environmental change and rapidly increasing human population, there has never been a more urgent need for a holistic approach.

With this belief in mind, we bring together rigorous quantitative analysis, appropriate theoretical frameworks and predictive modelling to help us understand the interdependence of animal and human populations, ecosystems and the environment.

Postgraduate taught programmes

- Animal Welfare Science, Ethics & Law (MSc, PgDip)
- Conservation Management of African Ecosystems (MSc)
- Ecology & Environmental Biology (MRes)
- Epidemiology of Infectious Diseases & Antimicrobial Resistance (MSc)
- Quantitative Methods in Biodiversity, Conservation & Epidemiology (MSc, PgDip)

Research opportunities

We offer PhDs in the following research areas:

- Ageing, health and welfare
- Infectious disease
- Ecology
- Evolution
- Population and ecosystem health.

You may want to identify a potential supervisor and contact him or her to discuss your research proposal before you apply.

✉ mvlis-gradschool@glasgow.ac.uk
🌐 glasgow.ac.uk/subjects/bahcm

CANCER SCIENCES

At Glasgow we bring together scientists and clinicians to promote and develop the best in cancer research, drug discovery and patient care.

We are ranked 1st in Scotland and 3rd in the UK for Medicine (Complete University Guide 2020).

We work together to:

- identify the molecular changes that cause cancer
- develop drugs targeted to these changes
- bring new therapies through preclinical and clinical trials.

The Cancer Research UK Glasgow Centre brings together scientists and clinicians from research centres, universities and hospitals around Glasgow to deliver the very best in cancer research, drug discovery and patient care. The centre's world-leading teams have made major advances in the understanding and treatment of many cancers.

Postgraduate taught programmes

- Cancer Research & Precision Oncology (MSc)

Research opportunities

We offer PhDs in the following research areas:

- Cancer biology and cell signalling
- Epigenetics
- Cancer stem cell biology
- Cancer imaging
- Chemoresistance in cancer
- Cancer and ageing
- Regulation of cancer cell death processes
- Genetics, genomics and systems medicine
- Immunotherapy for cancer
- Cancer clinical trials.

You may want to identify a potential supervisor and contact him or her to discuss your research proposal before you apply.

✉ mvlis-gradschool@glasgow.ac.uk
🌐 glasgow.ac.uk/subjects/cancersciences

CARDIOVASCULAR & MEDICAL SCIENCES

At Glasgow we bring together basic, translational and clinical research in cardiovascular and medical sciences.

We are ranked 1st in Scotland and 3rd in the UK for Medicine (Complete University Guide 2020).

Our research groups are based in the purpose-built British Heart Foundation Glasgow Cardiovascular Research Centre, the Sir James Black Building and the Royal Infirmary. Much of our teaching is delivered at the Teaching & Learning Centre at the Queen Elizabeth University Hospital, which combines NHS, University and research sector expertise on a single site. These state-of-the-art facilities enable us to focus on a comprehensive research and teaching agenda.

Postgraduate taught programmes

- Cardiovascular Sciences (MSc(MedSci))
- Clinical Pharmacology (MSc(MedSci))
- Clinical Trials & Precision Medicine (MSc)
- Diabetes (MSc(MedSci))
- Precision Medicine (MSc)
- Sport and Exercise Science & Medicine (MSc)
- Sport and Exercise Science & Medicine (MSc, PgDip, PgCert) (online)
- Translational Medicine (MRes)

Research opportunities

We offer PhDs in the following research areas:

- Cardiac research
- Vascular research
- Metabolic disease and diabetes research
- Renal research
- Stroke research
- Omics research.

You may want to identify a potential supervisor and contact him or her to discuss your research proposal before you apply.

✉ mvis-gradschool@glasgow.ac.uk
🌐 glasgow.ac.uk/subjects/cms

CELTIC & GAELIC

Celtic & Gaelic at Glasgow brings together the teaching and research of the ancient, medieval and modern periods in the Celtic languages of Scottish Gaelic, Irish and Welsh.

Gaelic has been taught at the University of Glasgow since the end of the 19th century, and we are ranked 1st in Scotland and 2nd in the UK for Celtic Studies (Complete University Guide 2020). 83% of Celtic & Gaelic research at Glasgow was classed as world-leading or internationally excellent in REF 2014.

With links to archaeology, history and modern languages and cultures, we can provide you with a unique opportunity to study a range of fascinating languages and cultures. Glasgow is the only university to have a named Chair of Gaelic, established in 1956, which reflects our commitment to the language.

Postgraduate taught programmes

Our Masters programmes are centred around the advanced interdisciplinary study of the Celtic languages and their literature, history and culture:

- Ancient Cultures (MSc)
- Celtic Studies (MLitt)
- There is also the option of a taught MRes in Celtic Studies, Gaelic or Gàidhlig which combines taught courses with a larger independent research component.

Research opportunities

We offer the following research study options: PhD, MLitt, MPhil, MRes.

Our research areas include:

- Modern and medieval Celtic languages
- Literature and cultures, especially modern Scottish Gaelic and Irish language and linguistics
- Modern Scottish Gaelic literature, 18th–21st centuries
- Gaelic linguistics
- Medieval Celtic literatures, especially early Irish/Gaelic and Middle Welsh
- Textual cultures of the medieval Celtic-speaking areas
- Medieval Celtic art
- Celtic place names of Scotland.

You may want to identify a potential supervisor and contact him or her to discuss your research proposal before you apply.

✉ humanities-pg@glasgow.ac.uk
🌐 glasgow.ac.uk/subjects/celticgaelic

CENTRAL & EAST EUROPEAN STUDIES

The study of Central & Eastern Europe, Russia and Eurasia has a long tradition at Glasgow: for over 60 years, CEES staff have covered developments in the region.

In REF 2014 we were ranked 1st in Scotland for Area Studies. Since 1949, CEES has hosted *Europe-Asia Studies* (formerly *Soviet Studies*), the principal academic journal in the world focusing on the history and current political, social and economic affairs of the countries of the former communist bloc of Europe and Eurasia.

We bring together innovative – and in some cases unique – expertise in the processes of socio-economic, socio-cultural and socio-political transformation in eastern Europe and Eurasia. As a subject, we work across disciplines including History, Political Science, Sociology, International Relations, Economics and languages (Czech, Polish, Russian, Hungarian).

You will benefit from our unparalleled international network of academic and non-academic partners, an extensive range of study abroad options and a lively seminar series here in Glasgow.

Postgraduate taught programmes

Our Masters programmes offer advanced study of historical and contemporary developments in the economy, politics, culture and society of Russia and the countries of Eastern Europe and Eurasia.

- Central & East European, Russian & Eurasian Studies (Erasmus Mundus International Master)
- Russian, East European & Eurasian Studies (MSc)
- Russian, East European & Eurasian Studies (MRes)

Research opportunities

We offer PhDs in the following research areas:

- Histories of communism and postsocialism
- Human rights and (in)securities in Central and Eastern Europe, Russia and Eurasia
- Migration and mobility
- Politics and international relations of Central and Eastern Europe, Russia and Eurasia
- Statehood, nationhood and identity.

You may want to identify a potential supervisor and contact him or her to discuss your research proposal before you apply.

✉ clair.clarke@glasgow.ac.uk
🌐 glasgow.ac.uk/subjects/cees

CHEMISTRY

Glasgow is ranked 6th for Chemistry in the UK (Complete University Guide 2020) and has fostered the talents of four Nobel Prize winners in chemistry.

Chemistry at Glasgow combines superb facilities with world-leading research groups covering all aspects of chemistry as well as the interfaces with biology, materials science and physics. Our outstanding research has led to the University of Glasgow being ranked 4th in the UK for Chemistry in REF 2014.

The School of Chemistry is also a member of ScotCHEM, which brings together seven universities in Scotland. ScotCHEM is committed to excellence and to providing the highest-quality postgraduate education and research experience.

Athena Swan Award

The school has an Athena Swan Bronze Award, demonstrating the school's commitment to supporting women in scientific studies and careers, and to improving the working environment for all.

Postgraduate taught programmes

Our Masters programmes draw on the research strengths of our academics and active research groups within the school. The school strives to meet student expectations, combining both teaching excellence and a supportive learning environment.

- Chemistry (MSc)
- Chemistry with Medicinal Chemistry (MSc)
- Industrial Heterogeneous Catalysis (MRes)

Research opportunities

We offer the following research study options: PhD, MPhil, MSc(Res).

Our research areas include:

- Chemical biology and medicinal chemistry
- Complex chemistry
- Dynamics and structure
- Energy conversion and storage
- Heterogeneous catalysis
- Nanoscience.

You may want to identify a potential supervisor and contact him or her to discuss your research proposal before you apply.

✉ pgadmissions@glasgow.ac.uk
🌐 glasgow.ac.uk/subjects/chemistry

CLASSICS

Classics has been central to the University of Glasgow since its foundation in 1451 and today has a vibrant research community.

Classics at Glasgow is a world-leading centre for the study of Roman oratory. Our scholars are also current in fields as diverse as religion, historiography, education and late antiquity.

C

We have active research projects on the reception of the classical world from the Middle Ages onwards. In addition, there is the opportunity to begin or continue Ancient Greek or Latin.

You will benefit from access to the University's well-stocked library, the University's museum and art gallery – The Hunterian (with its notable fine coin collection), to a major centre in humanities computing, and a dedicated Classics postgraduate study space and library.

If you study with us, you will develop a broad range of intellectual and transferable skills. You may also have the opportunity to interact with collaborative research projects in our key areas of activity.

Postgraduate taught programmes

Our Masters programmes offer the opportunity to develop in-depth understanding of the discipline, engage with our University Collections, and study a language from beginner level.

- Ancient Cultures (MSc)
- Classics (MLitt)
- There is also the option of a taught MRes in Classics, which combines taught courses with a larger independent research component.

Research opportunities

We offer the following research study options: PhD, MLitt, MPhil, MRes.

Our key areas of research are:

- Greek and Roman drama, with particular strength in comic drama
- Greek and Roman politics, with particular strength in oratory
- Ancient science and technology, including medicine.

You may want to identify a potential supervisor and contact him or her to discuss your research proposal before you apply.

✉ humanities-pg@glasgow.ac.uk
🌐 glasgow.ac.uk/subjects/classics

COMPUTING SCIENCE

Glasgow is ranked 7th in the UK for Computer Science (Complete University Guide 2020).

Since 1957, when Glasgow became the first university in Scotland to have an electronic computer, we have built a reputation for the excellence of our Computing Science research and our graduates. Today, our School of Computing Science is one of the UK's leaders in the field, setting itself the highest standards in research and in research-led learning and teaching.

Postgraduate taught programmes

Our Masters programmes provide you with the necessary skills and expertise that are required for a successful career in industry. We offer a range of specialist and conversion degree programmes that meet industry skills gaps within the UK and overseas.

Specialist programmes for those with a Computing Science undergraduate degree:

- Computing Science (MSc)
- Data Science (MSc)
- Information Security (MSc).

Conversion programmes for students whose undergraduate degree is in a subject other than Computing Science:

- Information Technology (MSc)
- IT Cyber Security (MSc)
- Software Development (MSc).

Research opportunities

We offer the following research study options: PhD, MPhil, MSc(Res).

Our research areas include:

- Computing science education
- Computer vision and graphics
- Embedded, networked and distributed systems
- Formal analysis, theory and algorithms
- Human-computer interaction
- Inference, dynamics and interaction
- Information retrieval
- Software engineering and safety.

You may want to identify a potential supervisor and contact him or her to discuss your research proposal before you apply.

✉ pgadmissions@glasgow.ac.uk
🌐 glasgow.ac.uk/subjects/computing

CREATIVE WRITING

Glasgow's creative writing programmes are among the most prestigious in the UK, having launched the careers of many successful writers.

21st-century graduates of our programme include Louise Welsh, Kirsty Logan, William Letford, Jen Hadfield, Helen Sedgwick, Alan Trotter, Anne Donovan and others who are making their mark on the contemporary scene. They join a long line of notable Glasgow writers that includes James Boswell, Tobias Smollett and Adam Smith in the 18th century, and in the 20th century prominent writer graduates such as William Boyd, Catherine Carswell, James Herriot, James Kelman, William McIlvanney, Edwin Morgan, Alexander Trocchi and Janice Galloway.

Our Creative Writing programme is the longest established in Scotland and has gained an excellent reputation among writers, agents and publishers. We have a vibrant visiting speaker programme and recent writers have included Chris Kraus, Alasdair Gray, Eileen Myles, D'Bi Young Anitafrika, Mark Millar, Nadine Aisha Jassat and Margaret Atwood.

This programme is perfect for aspiring writers who want to develop their craft, take risks in their work and gain creative and critical skills, all as part of a supportive community of fellow writers. We have a wealth of experience and enthusiasm to help you develop vital skills in creative, critical and editorial thinking.

Postgraduate taught programmes

This programme is for ambitious, dedicated individuals who are already engaged in writing. The courses are taught by published, award-winning writers.

- Creative Writing (MLitt)
- Creative Writing (MLitt) (online)

Research opportunities

We offer the following research study options: DFA, MFA.

Our research areas include:

- Experimental poetry and poetics
- Literary and genre fiction
- Hybrid forms and literary experimental essaying
- Cross-medial projects, eg arts and writing practice
- Conceptual writing.

You may want to identify a potential supervisor and contact her or him to discuss your research proposal before you apply.

✉ critstudies-currentpgs@glasgow.ac.uk
🌐 glasgow.ac.uk/subjects/creativewriting

DENTISTRY

Established in 1879, Glasgow Dental Hospital and School is the second-largest dental school in the UK. We provide postgraduate taught and research opportunities in a range of subjects.

We benefit from comprehensive modern facilities for patient care, student clinical practice and training, and for education and research in dental and oral diseases and disorders.

We are ranked 1st in the UK for Dentistry (Complete University Guide 2020).

Postgraduate taught programmes

- Endodontics (MSc(DentSci))
- Oral & Maxillofacial Surgery (MSc(DentSci))
- Oral Sciences (MSc)

Research opportunities

We offer PhDs in the following research area:

- Dentistry (Community Oral Health & Oral Sciences).

You may want to identify a potential supervisor and contact him or her to discuss your research proposal before you apply.

✉ mvls-gradschool@glasgow.ac.uk
🌐 glasgow.ac.uk/subjects/dentistry

D

ECONOMIC & SOCIAL HISTORY

Glasgow hosts the largest group of economic and social historians in Scotland.

Economic & Social History has been taught at the University of Glasgow since the beginning of the 20th century, with R H Tawney thought to be the first appointment in the field. We are internationally recognised for research excellence in modern economic and social history, with exceptional strength in business and financial history, the history of medicine and social and gender history.

Study with us and you will benefit from flexible degree programmes, small class sizes, an excellent range of library and archival resources and a supportive environment for learning.

Postgraduate taught programmes

- Global Economy (MSc)
- Global Markets, Local Creativities (Erasmus Mundus International Master) (IntM)
- History (MSc, PgDip)
- History (with an emphasis on the History of Medicine) (MSc)

Research opportunities

We offer PhDs in the following research areas:

- Modern economic and social history
- Business and financial history
- History of medicine
- Social and gender history.

You may want to identify a potential supervisor and contact him or her to discuss your research proposal before you apply.

✉ duncan.ross@glasgow.ac.uk
🌐 glasgow.ac.uk/subjects/economicsocialhistory

ECONOMICS

Economics has a distinguished history at Glasgow dating back to Adam Smith, the father of modern economics.

Today we have international expertise in:

- Macroeconomics
- Financial economics
- Development economics
- International finance
- Econometrics
- Microeconomics.

Staff research directly informs our teaching, which means that if you study with us, you can benefit from up-to-date degree programmes that touch on the key theoretical and policy issues of the day.

Postgraduate taught programmes

- Asset Pricing & Investment (MSc)
- Development Studies (MSc)
- Economic Development (MSc)
- Economics (MRes)
- Economics, Banking & Finance (MSc)
- Environment & Sustainable Development (MSc)
- Finance & Economic Development (MSc)
- Finance & Management (MSc)
- Financial Economics (MSc)
- Financial Forecasting & Investment (MSc)
- Financial Risk Management (MSc)
- International Banking & Finance (MSc)
- Investment Banking & Finance (MSc)
- Investment Fund Management (MSc)
- Quantitative Finance (MSc)

Research opportunities

We offer PhDs in the following research areas:

- Economics: microeconomics, macroeconomics, international finance, financial economics, development economics
- Finance
- Quantitative finance.

You may want to identify a potential supervisor and contact him or her to discuss your research proposal before you apply.

✉ business-economics@glasgow.ac.uk
🌐 glasgow.ac.uk/business/postgraduate

EDUCATION

In the School of Education, our goal is to enhance the educational experience and attainment of those living in Scotland, the wider United Kingdom and worldwide. We believe our postgraduate provision is transformative and underpinned by our core values of equity, diversity and social justice.

The School of Education has a history and tradition of working collaboratively across groupings to develop innovative cross-cutting research. A key feature of our research is our commitment to placing educational research as part of an interdisciplinary agenda to support the development of more equitable societies in the spirit of social justice. Our research is a fundamental component of our teaching. To continue to be a world-class and progressive university, we are dedicated to bringing inspiring people together to change the world.

Our areas of specialist knowledge include:

- Adult and community education
- Educational leadership and management
- Language and culture
- Science, engineering and technology education
- Teacher education and professional learning
- Citizenship and values education.

Postgraduate taught programmes

- Academic Practice (MEd) (online)
- Adult Education for Social Change (Erasmus Mundus International Master) (IntM)
- Adult Education, Community Development & Youth Work (MEd, PgDip)
- Advanced Educational Leadership (PgCert) (online)
- Assessment in Education (MSc) (online)
- Childhood Practice (MEd, PgDip)
- Children's Literature & Literacies (MEd)
- Children's Literature, Media & Culture (Erasmus Mundus International Master) (IntM)
- Education (MSc) (online)
- Education (Primary) (PGDE)
- Education (Secondary) (PGDE)
- Education Policies for Global Development (Erasmus Mundus International Master) (IntM)
- Education, Public Policy & Equity (MSc)
- Educational Leadership (MEd)
- Educational Studies (MEd)
- Educational Studies (MSc)
- Educational Studies for Adult, Youth & Community Contexts (MSc)

- Enhanced Practice in Education (MSc) (Dumfries Campus)
- In Headship (PgDip)
- Inclusive Education: Research, Policy & Practice (MEd)
- Inclusive Education: Research, Policy & Practice (PgDip, PgCert: Online distance learning available)
- Into Headship (PgCert)
- Middle Leadership & Management in Schools (PgCert)
- Museum Education (MSc)
- Museum Education (MSc) (online)
- Professional Practice with PGDE (MEd)
- Psychological Studies (conversion) (MSc)
- Teacher Leadership & Learning (PgCert)
- TESOL: Teaching of English to Speakers of Other Languages (MEd)
- TESOL: Teaching of English to Speakers of Other Languages (MSc)

Research opportunities

We offer the following research study options: PhD, MLitt, MPhil, MSc Research.

Our research areas include:

- Culture, literacies, inclusion and pedagogy
- Education leadership and policy
- Pedagogy, praxis and faith
- People, place and social change.

You may want to identify a potential supervisor and contact him or her to discuss your research proposal before you apply.

✉ PGT: education-pgt@glasgow.ac.uk
PGDE: education-ugandite@glasgow.ac.uk
PGR: education-pgroffice@glasgow.ac.uk
🌐 glasgow.ac.uk/schools/education/postgraduate

ENGINEERING

Glasgow has been delivering world-class engineering education and research since 1840.

We are ranked 4th in the UK for research excellence across all Engineering disciplines (REF 2014) and have world-leading expertise in the research and teaching of:

- Aerospace engineering
- Biomedical engineering
- Civil engineering
- Electronics and electrical engineering
- Mechanical engineering.

Working at the cutting edge of technology, our research supports industrial innovation, helps preserve the environment and assists in the advancement of medical and biological science. By choosing to study with us, you will take advantage of a range of fully accredited degree programmes that set new standards in engineering education.

Glasgow is ranked 1st in Scotland for Aerospace Engineering, Civil Engineering, Electronics & Electrical Engineering and Mechanical Engineering (Complete University Guide 2020).

Athena Swan Award

The school has an Athena Swan Bronze Award, demonstrating the school's commitment to supporting women in scientific studies and careers, and to improving the working environment for all.

Postgraduate taught programmes

Our Masters programmes address the technological challenges of the 21st century. We offer specialist, multidisciplinary and conversion engineering programmes.

- Aerospace Engineering (MSc)
- Aerospace Engineering & Management (MSc)
- Biomedical Engineering (MSc)
- Civil Engineering (MSc)
- Civil Engineering & Management (MSc)
- Computer Systems Engineering (MSc)
- Electronics & Electrical Engineering (MSc)
- Electronics & Electrical Engineering & Management (MSc)
- Electronics and Photonics Manufacturing (MSc)
- Mechanical Engineering (MSc)
- Mechanical Engineering & Management (MSc)
- Mechatronics (MSc)
- Nanoscience & Nanotechnology (MSc)
- Product Design Engineering (MSc)
- Robotics and AI (MSc)
- Structural Engineering (MSc)
- Sustainable Energy (MSc)

Research opportunities

We offer the following research study options: PhD, MPhil, MSc(Res).

The School of Engineering has five research divisions; within these our research expertise covers the following areas:

- Aerospace sciences – Experimental and computational aerodynamics, rotorcraft, systems, design, structures, space, energy and propulsion.
- Biomedical engineering – Advanced medical diagnostics, rehabilitation engineering and assistive technologies, biomaterials and synthetic biology.
- Electronics and nanoscale engineering – Electronic, photonic, microsystem and nanofabrication technologies. Key areas of interest include sensors, telecommunications, quantum information processing, terahertz and millimetre wave technology, advanced microelectronic devices, device simulation, metrology and instrumentation.
- Infrastructure and environment – Water and environmental engineering and mechanics and modelling of materials.
- Systems, power and energy – Energy, space systems, healthcare, manufacturing, wireless communications and automotive engineering. Key areas of interest include renewable energy and high-efficiency energy conversion processes, medical and industrial ultrasonics, materials, advanced and digital manufacturing, planetary exploration, space systems and wireless and radar systems.

You may want to identify a potential supervisor and contact him or her to discuss your research proposal before you apply.

✉ pgadmissions@glasgow.ac.uk
🌐 glasgow.ac.uk/subjects/engineering

ENGLISH LANGUAGE & LINGUISTICS

English Language & Linguistics at Glasgow offers world-leading expertise in modern English language and linguistics, English historical linguistics, Scots and English in Scotland, and medieval English studies.

You will benefit from a vibrant research environment, with world-leading researchers and library facilities. In 2017 we won the Queen's Anniversary Prize for Higher Education for our work in English Language over the last 50 years.

Glasgow was ranked 3rd in the UK and 1st in Scotland for research strength in English Language & Literature (REF 2014). English Language & Literature at Glasgow is ranked 36th in the world (QS World Rankings 2019). Study with us and you will work closely with academics considered leaders in their fields.

Postgraduate taught programmes

Our Masters programmes offer a variety of options for postgraduate taught study:

- Applied Linguistics (MSc)
- English Language & Linguistics (MSc)
- Speech, Language & Sociolinguistics (MSc).

Research opportunities

We offer the following research study options: PhD, MLitt, MPhil and MRes.

Our research areas include:

- Historical English language, literature and medieval studies – including manuscript studies, codicology, textual and editing, literary and gender criticism, historical linguistics
- Contemporary English linguistics, including phonetics and phonology, psycholinguistics, morphology, semantics, text analysis, sociolinguistics and onomastics
- Language in Scotland, including spoken and written Scottish English and Scots, and translation studies
- Applied Linguistics, including language in education and professional practice, critical discourse analysis, forensic linguistics and systemic functional linguistics.

You may want to identify a potential supervisor and contact him or her to discuss your research proposal before you apply.

✉ critstudies-currentpgs@glasgow.ac.uk
🌐 glasgow.ac.uk/subjects/englishlanguage

ENGLISH LITERATURE

The University is one of the UK's oldest, largest and most dynamic centres for the study of English literature and language.

We are ranked 36th in the World (QS World Rankings 2019), and place research-led teaching at the heart of our mission – we are 1st in Scotland and 3rd in the UK for research power (REF 2014).

Our cohort of over 1,300 students explore all aspects of literature in English from the medieval period onwards, benefiting from our staff's expertise in a wide range of areas. You will have access to the University's formidable archival resources, including special library collections and the world-class Hunterian collection, in addition to Glasgow's many public collections, libraries and museums.

Postgraduate taught programmes

We offer a variety of MLitt programmes, reflecting our wide-ranging research and teaching expertise:

- Creative Writing (MLitt) (online and on-campus)
- English Literature (MLitt)
- English Literature: American Modern Literature (MLitt)
- English Literature: Fantasy (MLitt)
- English Literature: Medieval & Early Modern Literature & Culture (MLitt)
- English Literature: Modernities – Literature, Culture, Theory (MLitt)
- English Literature: Romantic Worlds (MLitt)
- English Literature: Victorian Literature (MLitt).

Research opportunities

We offer the following research study options: PhD, MLitt, MPhil, MRes and MFA (Creative Writing).

Our research areas include:

- African literatures in English
- American and Canadian literatures and cultures
- Colonial and postcolonial studies
- Critical theory
- Environmental, energy and spatial humanities
- History of the book
- Irish literature and culture
- Medical humanities
- Modernism and the avant-garde
- Poetry and poetics
- Textual scholarship and editing
- Travel writing.

You may want to identify a potential supervisor and contact him or her to discuss your research proposal before you apply.

✉ critstudies-currentpgs@glasgow.ac.uk
🌐 glasgow.ac.uk/subjects/englishliterature

ENVIRONMENT, SUSTAINABILITY & TOURISM

The School of Interdisciplinary Studies at Dumfries Campus has undertaken innovative, crossdisciplinary research and teaching for 20 years.

In Dumfries we have a thriving community of students from across the world. As well as offering stunning scenery and recreation, our local landscape and heritage are an important real-life laboratory for teaching and research. Forestry, renewable energy, sustainable agriculture, wildlife conservation, tourism and community projects are all important to the region, culture and economy.

Postgraduate taught programmes

- Environment, Culture & Communication (Dumfries Campus) (MLitt)
- Management & Sustainable Tourism (Dumfries Campus) (MSc)
- Tourism Development & Culture (Erasmus Mundus Joint Master) (Dumfries Campus) (MSc)
- Tourism, Heritage & Development (Dumfries Campus) (MSc)
- Tourism, Heritage & Sustainability (Dumfries Campus) (MSc)

Research opportunities

We offer the following research study options: PhD, MSc(Res), MPhil(Res).

Here are just some of the research topics available:

- Tourism and heritage
- Hospice, palliative and end-of-life care
- Public health, wellbeing and ageing
- Social policy and the third sector
- Environmental humanities
- Environmental sustainability and land management
- Marine and freshwater pollution
- Hydrological modelling and forecasting
- Education studies
- Science, technology and mathematics education
- Leadership and professional practice
- Literacies and language
- Political philosophy
- Scottish history and Scottish studies
- Folk belief and popular culture.

You may want to identify a potential supervisor and contact him or her to discuss your research proposal before you apply.

PGT: david.borthwick@glasgow.ac.uk
PGR: naomi.richards@glasgow.ac.uk
glasgow.ac.uk/schools/interdisciplinary

FILM & TELEVISION STUDIES

Glasgow is 1st in the UK for Drama, Dance and Cinematics (Complete University Guide 2020). The city of Glasgow is a prime international location for the study of film and television. As Scotland's media capital, it is home to BBC Scotland, STV and numerous independent production companies.

Our city is famed for its thriving cultural scene, with two independent cinemas, an annual film festival, and specialist film and arts festivals. We are a well-established, respected centre for teaching and research, home to the leading international journal *Screen* and host the journal's annual conference.

On-campus facilities include a cinema, audiovisual resource centre, video-editing suite and design room. You will be taught in seminar groups and will be supported to develop critical and creative skills to prepare you for a wide variety of careers.

If you study with us you will benefit from a dedicated team of world-renowned Film and Television Studies researchers, curators and practitioners, in a vibrant and creative environment.

Postgraduate taught programmes

We offer a number of innovative and professional MLitt and MSc programmes, combining theoretical, historical and practical approaches:

- Film & Television Studies (MLitt)
- Film Curation (MSc)
- Filmmaking & Media Arts (MSc).

Research opportunities

We offer the following research study options: PhD, MLitt, MPhil and MRes.

Topics in which we would welcome postgraduate research include:

- Television and film theories
- Screen histories, aesthetics and practices
- The national, transnational and world cinemas
- Film festivals and curation
- Screen media technologies and archives
- Gender, race, age, disability and class.

You may want to identify a potential supervisor and contact him or her to discuss your research proposal before you apply.

cca-pgcomm@glasgow.ac.uk
glasgow.ac.uk/subjects/filmtelevision

GEOGRAPHICAL & EARTH SCIENCES

Glasgow is ranked 6th for Geography and 9th for Geology in the UK (Complete University Guide 2020).

Our Human Geography Research Group ranked 1st in the UK for world-leading and internationally excellent research (REF 2014).

Athena Swan Award

The school has an Athena Swan Silver Award, demonstrating the school's commitment to supporting women in scientific studies and careers, and to improving the working environment for all.

Postgraduate taught programmes

Most of our Masters are accredited by the Royal Institute of Chartered Surveyors (RICS) and Chartered Institution of Civil Engineering Surveyors (CICES).

- Geoinformation Technology & Cartography (MSc, PgDip, PgCert)
- Geomatics & Management (MSc)
- Geospatial & Mapping Sciences (MSc, PgDip, PgCert)
- Human Geography: Spaces, Politics, Ecologies (MRes)
- Land & Hydrographic Surveying (MSc, PgDip, PgCert)
- Land & Hydrographic Surveying with Work Placement (MSc)
- Sustainable Water Environments (MSc)

Research opportunities

We offer the following research study options: PhD, MPhil, MSc(Res).

Our research areas include:

- Creative geohumanities
- Deep Earth and shallow crustal processes
- Environmental biogeochemistry
- Environmental change and sustainability
- Evolution of Earth's surface
- Exploring vital geographies
- Geospatial technologies, GIS and remote sensing
- Planetary evolution and habitability
- Spatial politics and practices
- Stressed environments and communities
- Subaltern globalisations.

You may want to identify a potential supervisor and contact him or her to discuss your research proposal before you apply.

pgadmissions@glasgow.ac.uk
glasgow.ac.uk/subjects/ges

HEALTH & WELLBEING

Our aim is to improve population health and wellbeing and reduce inequalities in health.

The Institute of Health & Wellbeing builds on existing strengths within the University of Glasgow and brings together experts from a range of disciplines across the University to pursue common themes:

- environment and health
- perceptions and experiences of health and wellbeing
- inequalities in health and wellbeing
- new technologies to enhance health and wellbeing
- trials of health service and community-based interventions
- capitalising on longitudinal studies and the use of routine NHS or other administrative data.

Postgraduate taught programmes

- Developing & Evaluating Interventions (MSc, PgDip, PgCert, CPD)
- Global Health (MSc)
- Global Mental Health (MSc, PgDip, PgCert) (online and on-campus)
- Global Mental Health (Health Promotion specialism) (MSc)
- Global Mental Health (Health Technology Assessment specialism) (MSc)
- Global Mental Health (Research Methods specialism) (MSc)
- Health Technology Assessment (MSc, PgDip, PgCert) (online)
- Population Health Sciences (MSc, PgDip, PgCert) (online)
- Primary Care (MSc, PgDip, PgCert) (online)
- Public Health (MPH) (online and on-campus)
- Public Health (Data Science specialism) (MPH)
- Public Health (Epidemiology specialism) (MPH)
- Public Health (Health Economics specialism) (MPH)
- Public Health (Health Promotion specialism) (MPH)

Research opportunities

We offer PhDs in the following research areas:

- General practice and primary care
- Health economics and health technology assessment
- Mental health
- Public health
- Social science and health.

You may want to identify a potential supervisor and contact him or her to discuss your research proposal before you apply.

mvls-gradschool@glasgow.ac.uk
glasgow.ac.uk/subjects/healthwellbeing

HISTORY

History at Glasgow offers an outstanding learning experience, working with world-leading experts with close connections to the libraries, archives and museums of the University and the city.

The University of Glasgow has taught History since 1897. In the most recent Research Excellence Framework (REF 2014), we were ranked joint 4th in the UK for research excellence and impact.

Our Masters programmes cover all periods from early medieval to late modern, and emphasise Scotland, Britain, Europe and the Americas, with an increasingly global perspective.

Postgraduate teaching is conducted mainly in small-group seminars, discussing topics directed by cutting-edge research. Our research community is dynamic and supportive and you will be encouraged to take part in many research-led initiatives.

Postgraduate taught programmes

Our programmes combine a core research training course and a range of specialised historical, theoretical and skills-based courses. You will also complete a primary source research dissertation.

- Early Modern History (MSc, PgDip)
- Gender History (MSc, PgDip)
- History (MSc, PgDip)
- Medieval History (MSc, PgDip)
- Modern History (MSc, PgDip)
- Scottish History (MSc, PgDip)

Research opportunities

We offer the following research study options: PhD, MLitt, MPhil and MRes.

Topics in which we would welcome postgraduate research include:

- Medieval Europe
- Scotland, Ireland and the British Isles
- Early modern culture, beliefs and ideas
- Global history and culture
- History of medicine
- Social and gender history
- War studies
- Late modern American, European, British and Scottish history.

You may want to identify a potential supervisor and contact him or her to discuss your research proposal before you apply.

✉ humanities-pg@glasgow.ac.uk
🌐 glasgow.ac.uk/subjects/history

HISTORY OF ART

The University provides a highly stimulating study environment with access to world-renowned collections in one of the most inspirational cities for art and design in the UK.

Our expertise covers all major European art-historical periods, from Antiquity to contemporary. With art galleries on campus and access to Glasgow Museums, you will benefit from hands-on experience and development of specialised skills as part of your degree programme.

Postgraduate taught programmes

- Art History (MLitt)
- Art History: Collecting & Provenance in an International Context (MSc)
- Art History: Dress & Textile Histories (MLitt)
- Art History: Modern Material Artefacts (MSc)
- Art History: Technical Art History, Making & Meaning (MLitt)
- Curatorial Practice (Contemporary Art) (in conjunction with The Glasgow School of Art) (MLitt)
- Museum Studies (MSc, PgDip, PgCert)
- Textile Conservation (MPhil)

Research opportunities

We offer the following research study options: PhD, MLitt and MPhil.

Areas available for research supervision include:

- European art historical periods, especially Medieval, Renaissance, 17th, 18th, 19th, 20th centuries, and contemporary
- Modernist studies, particularly Dada and Surrealism, and 19th-century avant-gardes including Whistler, Impressionism and fin-de-siècle
- Chinese art and culture
- Art theory, particularly gender and post-1945
- Collecting practices, collections, the art market, museums and curatorial practices, and technical art history
- Material culture studies, particularly decorative art; and design history, including the work of Charles Rennie Mackintosh
- Dress and textile histories
- Textile conservation and textile conservation science
- Law and ethics approaches to cultural heritage
- Art law and business.

You may want to identify a potential supervisor and contact him or her to discuss your research proposal before you apply.

✉ cca-pgcomm@glasgow.ac.uk
🌐 glasgow.ac.uk/subjects/historyofart

INFECTION, IMMUNITY & INFLAMMATION

The Institute of Infection, Immunity & Inflammation is home to scientists and clinical investigators of global repute who possess the broad expertise necessary to achieve our aims.

Despite the continual development of new therapies, antibiotics and vaccines, chronic inflammatory and infectious diseases still pose persistent health threats.

Infectious, autoimmune and inflammatory diseases place an enormous global burden on human and animal health. The institute comprises scientists and clinicians working together to promote and develop research, drug discovery and ultimately improvements in patient care in this area of critical international importance.

Our expertise is supported by state-of-the-art basic science technology, integrated seamlessly with translational clinical trial facilities. We also have numerous research links with disease endemic countries, in particular in Africa, South America and India.

We aspire to a truly “bench to bedside and back” approach to resolving crucial questions of this new millennium.

Postgraduate taught programmes

- Immunology & Inflammatory Disease (MSc, PgDip, PgCert)
- Infection Biology (MSc, PgDip, PgCert)
- Infection Biology (Microbiology specialism) (MSc)
- Infection Biology (Parasitology specialism) (MSc)
- Infection Biology (Virology specialism) (MSc)

Research opportunities

PhD programmes within the institute cover an exciting range of topics, with specific areas of interest across our four main research themes:

- Immunology and inflammation
- Bacteriology
- Parasitology
- Virology.

You may want to identify a potential supervisor and contact him or her to discuss your research proposal before you apply.

✉ mvls-gradschool@glasgow.ac.uk
🌐 glasgow.ac.uk/subjects/iii

INFORMATION STUDIES

Information Studies at Glasgow offers an exciting programme of research and teaching on the creation, management and use of information in all its forms.

Our areas of specialty are museums and archives, libraries, information and records management, and digital humanities.

The University's rich environment of practice-based teaching and research is immersed in heritage and provides first-hand experience in ways that knowledge has been created, used, communicated and preserved from the past to the digital age.

You will have access to cutting-edge facilities at our dedicated collections study centre at Kelvin Hall and the opportunity to work with cultural heritage organisations within one of the world's most inspirational and accessible cities. Teaching partners include The Hunterian, Glasgow Museums and National Library of Scotland.

Our programmes focus on developing your critical, analytical and communication skills, to equip you to meet the demands of today's employers and tackle the challenges of the 21st century.

Postgraduate taught programmes

Our MSc programmes combine work placements, practitioner seminars and guest speakers. They are accredited by CILIP, and our Information Management MSc is also accredited by the ARA.

- Information Management & Preservation (MSc, PgDip, PgCert)
- Museum Studies (MSc, PgDip, PgCert)

Research opportunities

We offer the following research study options: PhD, MLitt, MPhil and MRes.

Our research focuses on the following areas:

- Theoretical approaches to information
- Management, curation and evaluation of digital assets
- Archive, records and (personal) information management
- Digital cultural heritage and museology
- Digital humanities and arts.

You may want to identify a potential supervisor and contact him or her to discuss your research proposal before you apply.

✉ humanities-pg@glasgow.ac.uk
🌐 glasgow.ac.uk/subjects/informationstudies

LAW

The teaching of law at the University of Glasgow dates back to the foundation of the University in 1451.

The School of Law has a long and illustrious history with distinguished alumni including judges, politicians and scholars. As one of the top law schools in the UK – currently ranked 1st in Scotland and 3rd in the UK in the Complete University Guide 2020 – we enjoy a worldwide reputation for excellence in research.

As a student you will have access to our excellent facilities including a dedicated law library and Moot Courtroom as well as an opportunity to take part in our vibrant seminar series, featuring talks from highly successful judges and lawyers. You will benefit from our employability experts, who organise careers events, courses and networking sessions to help you into a successful career. Studying Law at Glasgow equips you with the knowledge and skills you need in an increasingly competitive legal job market.

Postgraduate taught programmes

- Corporate & Financial Law (LLM)
- Diploma in Professional Legal Practice (PgDip)
- Intellectual Property & the Digital Economy (LLM)
- International Commercial Law (LLM)
- International Competition Law & Policy (LLM)
- International Economic Law (LLM)
- International Law (LLM)
- International Law & Security (LLM)
- Law (LLM)
- Law (MRes)
- Socio-Legal Studies (MRes)

Research opportunities

We offer the following research study options: PhD, LLM by Research.

Our research areas include:

- Legal theory
- Intellectual property
- International law, conflict and security
- Law reform and public policy
- Corporate and financial law.

You may want to identify a potential supervisor and contact him or her to discuss your research proposal before you apply.

✉ law-llmenquiries@glasgow.ac.uk
🌐 glasgow.ac.uk/schools/law/postgraduate

LIFE SCIENCES

The School of Life Sciences has an international reputation for teaching and research in modern biological sciences.

We take a collaborative, crossdisciplinary approach to addressing the scientific challenges of this post-genomic and information age. If you choose to study with us you can benefit from an exceptional choice of degree programmes that attract students from across the globe.

The strengths of the school include the academic breadth of teaching activities, innovative teaching practice and experienced staff committed to providing an excellent teaching and learning experience.

Our competitive degrees utilise the research and teaching strengths of the College of Medical, Veterinary & Life Sciences to deliver research-led education and equip our graduates with the skills and attributes necessary for success in any chosen career.

Postgraduate taught programmes

- Bioinformatics (MSc, PgDip, PgCert)
- Biomedical Sciences (MSc)
- Biomedical Sciences (MRes)
- Biomedical Sciences (Integrative Mammalian Biology) (MRes)
- Human Anatomy (PgCert)
- Medical Visualisation & Human Anatomy (MSc)

Research opportunities

We offer PhDs in the following research areas:

- Molecular biology
- Cellular biology
- Population ecology.

You may want to identify a potential supervisor and contact him or her to discuss your research proposal before you apply.

✉ mvls-gradschool@glasgow.ac.uk
🌐 glasgow.ac.uk/subjects/lifesciences

MANAGEMENT

Management at the University of Glasgow began in the late 1950s and is part of an internationally accredited world-class business school.

We have a long tradition of research-led business and management education and development, delivered within an internationally recognised and highly regarded Russell Group University.

Our aim is to help creative thinkers, managers and executives to realise their potential by stimulating interest and reflection, heightening awareness and expanding horizons. The result is research that is world-leading, innovative, significant, rigorous and featured in respected academic journals.

If you study with us you will benefit from industry links which offer tangible benefits to our students. Corporate supported teaching spaces and consultancy projects provide an enhanced learning experience, while commissioned research informs our teaching, providing you with the most up-to-date management knowledge.

Postgraduate taught programmes

- Finance & Management (MSc)
- International Business (MSc)
- International Human Resource Management & Development (MSc)
- International Management & Design Innovation (MSc)
- International Strategic Marketing (MSc)
- Management (MSc)
- Management (MRes)
- Management & Sustainable Tourism (Dumfries Campus) (MSc)
- Management with Enterprise & Business Growth (MSc)
- Management with Human Resources (MSc)
- Management with International Finance (MSc)
- MBA (Master of Business Administration) (MBA)
- MGB (Master of Global Business) (MGB)

Research opportunities

Management embraces diverse social science methodological traditions and research methods. Its interdisciplinarity and methodological pluralism position it well to address key contemporary concerns. We currently offer a PhD in Management.

You may want to identify a potential supervisor and contact him or her to discuss your research proposal before you apply.

✉ business-management@glasgow.ac.uk
🌐 glasgow.ac.uk/business/postgraduate

MATHEMATICS & STATISTICS

Glasgow's proud history of excellence in Mathematics dates back to the 17th century and we have one of the largest statistical groups in the UK.

We offer an extensive and varied seminar programme, with members of the school involved in networks including the North British Functional Analysis Seminar, the North British Differential Equations Seminar and the London Mathematical Society Network on Classical and Quantum Integrability.

Postgraduate taught programmes

Our portfolio is diverse and covers a wide range of topics such as extracting information and value from complex data, applying statistical methods and their use in medical and genetic applications, or learning practical technical expertise in data handling.

- Advanced Statistics (MRes)
- Biostatistics (MSc)
- Data Analytics (MSc)
- Data Analytics (MSc, PgDip, PgCert) (online)
- Environmental Statistics (MSc)
- Mathematics / Applied Mathematics (MSc)
- Statistics (MSc)

Research opportunities

Integrated PhD programme (four years)

Our PhD with Integrated Study in Mathematical Sciences is a four-year PhD programme. Successful completion of the taught component will allow you to progress to a research degree. You will submit a thesis to be examined by the end of your fourth year.

We also offer the following research study options: PhD, MPhil, MSc(Res).

Our research areas include:

- Algebra
- Analysis
- Biostatistics
- Continuum mechanics
- Environmental statistics
- Geometry and topology
- Integrable systems and mathematical physics
- Mathematical biology
- Statistical methodology.

You may want to identify a potential supervisor and contact him or her to discuss your research proposal before you apply.

✉ pgadmissions@glasgow.ac.uk
🌐 glasgow.ac.uk/schools/mathematicsstatistics

MEDIA & CULTURAL POLICY

Media & Cultural Policy at Glasgow has excellent links with industry.

The Centre for Cultural Policy Research is internationally connected in the academic world and has close ties with policymakers, cultural agencies and the media and communications industries. Invited speakers will provide current industry insights from across the sector.

At the same time our programmes offer you an academically engaging and rewarding experience and will equip you with a critical understanding of the landscape within which cultural and creative industries operate.

Postgraduate taught programmes

Our programmes will help prepare you for a range of management careers across the media sector, including in economics, business strategy, media policy, and intellectual property rights and marketing.

- Creative Industries & Cultural Policy (MSc)
- Media Management (MSc)

Research opportunities

We offer the following research study options: PhD, MLitt and MPhil.

We welcome applications for research in the following broad areas:

- Creativity and innovation in the cultural and media industries
- Cultural and national identities and communications in the global context
- Communication and media studies
- Evaluation of the social impact of arts intervention
- Evidence-based policymaking
- Media management and media economics
- Media regulation and cultural policy in the UK and EU
- Social media, journalism and sport.

You may want to identify a potential supervisor and contact him or her to discuss your research proposal before you apply.

MEDICINE

The School of Medicine, Dentistry & Nursing is renowned for pioneering teaching methods and superb facilities for postgraduate study.

We have one of the largest and most prestigious Medical Schools in Europe and we are ranked 3rd in the UK for Medicine (Complete University Guide 2020).

The school is recognised within the University and externally for its innovative and distinctive basic science, translational and clinical research programmes in medicine, dentistry and nursing and healthcare based on interdisciplinarity and a multi-professional approach.

The school is dispersed over University and Hospital sites. The main site for Dentistry is the Glasgow Dental Hospital and for Medicine, the Wolfson Medical School Building, the New Lister Building at Glasgow Royal Infirmary and since 2015, the Teaching & Learning Centre at the Queen Elizabeth University Hospital.

If you study with us, you can benefit from our outstanding facilities and pioneering teaching methods, including the best in clinical experience. The interface with the NHS partners is critical to our research strategy and comprises a key element for translating basic science discoveries into clinical practice with clear societal benefits.

We have over 170 postgraduate research students involved in a wide range of research subject areas.

Postgraduate taught programmes

- Advanced Lymphoedema Management (PgCert)
- Child Health (PgCert)
- Clinical Critical Care (MSc) (online)
- Clinical Genetics (MSc(MedSci))
- Clinical Nutrition (MSc(MedSci))
- Critical Care (MSc, PgDip, PgCert)
- Critical Care & Leadership (MSc) (online)
- Critical Care, Leadership & Management (MSc)
- Forensic Toxicology (MSc(MedSci))
- Genetic & Genomic Counselling (with Work Placement) (MSc(MedSci))
- Health Professions Education / Health Professions Education (with Research) (MSc, MSc (with Research), PgDip, PgCert) (online)
- Healthcare Chaplaincy (PgCert)

- Health Services Management (MSc, PgDip, PgCert)
- Human Nutrition (MSc(MedSci))
- Medical Genetics & Genomics (MSc(MedSci))
- Medical Physics (MSc)
- Pathology, Molecular (MSc, PgDip, PgCert: Blended learning)
- Sports Nutrition (PgCert)

Research opportunities

We offer opportunities for both clinical (MD/PhD/MSc) and non-clinical (PhD/MSc) research in a number of areas:

- Forensic medicine and science
- Nutrition
- Medical education.

You may want to identify a potential supervisor and contact him or her to discuss your research proposal before you apply.

MODERN LANGUAGES & CULTURES

Modern Languages & Cultures brings together expertise to help you develop proficiency in speaking, understanding, reading, writing and appreciating languages and culture.

We offer expertise, teaching and supervision in a diverse range of fields within French, German, Italian, Portuguese, Russian and Spanish.

The school hosts a large number of research seminars featuring both academics from Glasgow and distinguished international visiting speakers. The school's teaching is supported by the excellent resources in the dedicated language library.

Some 10,000 items are currently available in over 60 languages, at levels from beginner to advanced, including language materials for professionals, such as those in engineering and law.

Our students go on into the workplace well prepared to work in an international environment or as preparation for further study in a wide range of related fields.

Postgraduate taught programmes

Our Masters programmes offer study options in the following areas:

- Comparative Literature (MLitt)
- Translation Studies (MSc, PgDip, PgCert).

Research opportunities

We offer the following research study options: PhD, MPhil, MLitt, MRes.

Our research areas include:

- Visual cultures
- Histories and subjectivities
- Writing in transit/cultural translations
- Critical editions and translations.

You may want to identify a potential supervisor and contact him or her to discuss your research proposal before you apply.

✉ carolyn.donaldson@glasgow.ac.uk
 🌐 glasgow.ac.uk/subjects/modernlanguages

MOLECULAR, CELL & SYSTEMS BIOLOGY

Molecular, Cell & Systems Biology at Glasgow houses a multidisciplinary centre of excellence conducting fundamental and translational life science research underpinning health and food security.

Our facilities include a protein characterisation facility which allows the study of protein structure, function stability and interactions with other macromolecules in solution as well as facilities for cell biology.

We are supported by a world-class technological base. This includes next-generation sequencing, microarrays, proteomics and metabolomics through the Sir Henry Wellcome Functional Genomics Facility and the Scottish National Centre for Metabolomics.

We provide excellent graduate training both at Masters and PhD level. Our three taught Masters programmes allow you to work closely with members of staff carrying out internationally recognised research in their chosen field.

Postgraduate taught programmes

- Biotechnology (MSc)
- Biotechnology & Management (MSc, PgDip) (with Adam Smith Business School)
- Food Security (MSc)
- Stem Cell Engineering for Regenerative Medicine (MSc)

Research opportunities

We offer PhDs in the following research areas:

- Molecular genetics
- Plant science
- Protein structure and regulation
- Molecular pharmacology
- Cell engineering
- Synthetic biology
- Biological systems.

You may want to identify a potential supervisor and contact him or her to discuss your research proposal before you apply.

✉ mvls-gradschool@glasgow.ac.uk
 🌐 glasgow.ac.uk/subjects/mcsb

MUSIC

The University of Glasgow hosts Scotland's leading centre for music research.

Based in the UK's first UNESCO City of Music, our world-class expertise includes specialist knowledge in historical and cultural musicology, popular music and the music industries, performance and performance studies, composition, sound design, audiovisual practices and music technology.

Our range of programmes are designed for those seeking a career in the music industry or the arts and cultural sector, and for those interested in the links between music and contemporary culture, history, creativity and the digital world.

By studying with us, you will benefit from work placement opportunities within Glasgow's legendary music scene, learn from award-winning professional musicians and scholars, and be able to pursue your musical interests through researching, performing, composing and exploring new technologies.

Postgraduate taught programmes

Our range of programmes are driven by a strong research and professional development ethos.

- Composition & Creative Practice (MMus)
- Historically Informed Performance Practice (in conjunction with RCS) (MMus)
- Music Industries (MSc)
- Musicology (MMus)
- Sound Design & Audiovisual Practice (MSc)

Research opportunities

We offer the following research study options: PhD, MPhil, MRes.

We welcome research in the following areas:

- Composition, including experimental music and intercultural aspects of composition
- Historical and cultural musicology, including philosophy and aesthetics of music, music in popular culture, music and politics, and music and modernism
- Sonic arts and audiovisual practice, including live electronics, spatial composition, and audiovisual composition and aesthetics
- Performance, including historically informed performance and contemporary music practices.

You may want to identify a potential supervisor and contact them directly to discuss your research proposal before you apply.

✉ cca-pgcomm@glasgow.ac.uk
 🌐 glasgow.ac.uk/subjects/music

NEUROSCIENCE & PSYCHOLOGY

Glasgow is ranked in the UK's top 10 for Psychology (Complete University Guide 2020).

Neuroscience & Psychology offers an excellent research environment with impressive facilities and world-leading expertise.

We strive to understand the brain at multiple levels of function, from cells to cognition. Our approaches range from molecular, cellular and systems-level investigations to the brain imaging of human behaviour and cognition. Researchers at our Centre for Cognitive Neuroimaging (CCNi) combine multimodal brain imaging with sophisticated analysis methods to study the functioning of the human brain.

Postgraduate taught programmes

- Applied Neuropsychology (MSc(MedSci), PgDip)
- Brain Sciences (MSc)
- Clinical Neuropsychology (MSc(MedSci), PgDip)
- Clinical Neuropsychology Practice (PgCert) (subject to approval)
- Clinical Psychology (DClinPsy)
- Psychological Science (conversion) (MSc)
- Psychological Studies (conversion) (MSc)
- Psychology (conversion) (MSc) (online)
- Research Methods of Psychological Science (MSc)

Research opportunities

We offer PhDs in the following research areas:

- Non-invasive multimodal brain imaging using fMRI
- Dynamics of auditory and visual processing
- Functions of brain oscillations
- Neuromodulation via TMS
- Spinal cord and brainstem circuits in pain
- Molecular mechanisms of synaptic transmission and plasticity
- Neural control of respiration
- Schizophrenia
- Spinal cord injury
- Rett syndrome
- Imaging in acute stroke
- Stroke clinical trial and design
- Stem cells as treatment for stroke
- Experimental stroke
- Cortical circuits mediating perception and memory
- Circadian rhythms.

You may want to identify a potential supervisor and contact him or her to discuss your research proposal before you apply.

✉ scieng-gradschool@glasgow.ac.uk
 ✉ mvls-gradschool@glasgow.ac.uk
 🌐 glasgow.ac.uk/subjects/neurosciencepsychology

NURSING & HEALTH CARE

The Nursing & Health Care School is committed to evidence-based practice and research that enhances patient care and service delivery and which underpins our teaching.

Our research activity is multi-professional, patient-centred and collaborative and sits mainly within the themes of Improving Health, Wellbeing and Care, and Education. There is an active postgraduate research community and we are ranked 1st in the UK for Nursing (Complete University Guide 2020).

Our Nursing & Health Care School was established with the aim of producing Graduate Nurses who were grounded in health-related scientific theory and it now has a national and international reputation for nursing education and research with the patient/client as the focus of health care.

Postgraduate taught programmes

- Advanced Nursing Science (MSc)
- Advanced Practice in Health Care (MSc(MedSci), PgDip, PgCert)
- Leadership in Health & Social Care (PgCert) (online)

Research opportunities

We offer opportunities for both clinical (MD/PhD/MSc) and non-clinical (PhD/MSc) research in Nursing and Health Sciences.

You may want to identify a potential supervisor and contact him or her to discuss your research proposal before you apply.

✉ mvls-gradschool@glasgow.ac.uk
🌐 glasgow.ac.uk/subjects/nursing

PHILOSOPHY

Philosophy at Glasgow consists of a vibrant community of scholars tackling fundamental questions at the forefront of the limits of knowledge.

Our research-driven programmes will help prepare you for PhD study or a career in the public or private sectors. Our research expertise spans a wide range of disciplines including epistemology, history of analytic philosophy, logic, language and mathematics, metaphysics, moral and political philosophy, philosophy of mind, and perception.

You will benefit from an extraordinary amount of staff time and attention and are encouraged to informally exchange ideas with both staff and other students, and to attend and participate in many research seminars, workshops and conferences.

If you study with us you will also be following in the footsteps of past professors, who include such giants of empiricism as Adam Smith and Thomas Reid.

Postgraduate taught programmes

- We offer three Philosophy Masters programmes, including a conversion option for those who don't already have a degree in Philosophy. All degrees put you in a position to apply for the PhD in Philosophy.
- Philosophy (MSc)
 - Philosophy (conversion) (MSc)
 - Philosophy of Mind & Psychology (MSc) – jointly taught by staff in Psychology.

Research opportunities

We offer the following research study options: PhD, MLitt, MPhil and MRes.

You will have the opportunity to engage with specialist research at the interdisciplinary Centre for the Study of Perceptual Experience. The Centre, which is hosted by the University, brings together philosophers and scientists to work on the nature of the mind, and has philosophy specialists in perceptual experience, virtual reality, emotions, and hedonics.

We also host the research group COGITO, which undertakes work in contemporary analytic, social and virtue epistemology; and the Forum for Quine & the History of Analytic Philosophy, which builds on our local expertise and research links with UK universities.

You should identify a potential supervisor and contact him or her to discuss your research proposal before you apply.

✉ humanities-pg@glasgow.ac.uk
🌐 glasgow.ac.uk/subjects/philosophy

PHYSICS & ASTRONOMY

Glasgow is ranked 2nd in Scotland for Physics & Astronomy (Complete University Guide 2020).

In recent years our research has been recognised by REF 2014, and it receives consistently high levels of funding.

Glasgow's Institute for Gravitational Research was recently at the centre of a truly global research discovery which detected gravitational waves coming from two black holes, confirming Einstein's theory of general relativity more than 100 years after his original prediction.

Postgraduate taught programmes

Our taught programmes provide an understanding of the principles and methods covering a variety of global challenges in the areas of energy, materials, emerging technologies and the environment. We offer a diverse portfolio of specialist and interdisciplinary programmes that reflect our research strengths, successful academic collaborations and professional accreditation, all at a level appropriate for a professional physicist.

- Astrophysics (MSc)
- Nuclear & Environmental Physics (MSc)
- Physics: Advanced Materials (MSc)
- Quantum Technology (MSc)
- Sensor & Imaging Systems (MSc)
- Theoretical Physics (MSc)

Research opportunities

We offer the following research study options: PhD, MPhil, MSc(Res).

Our research areas include:

- Astronomy and astrophysics
- Experimental and theoretical particle physics
- Extreme light
- Gravitational research
- Imaging concepts
- Materials and condensed matter physics
- Nuclear physics
- Optics
- Quantum theory.

You may want to identify a potential supervisor and contact him or her to discuss your research proposal before you apply.

✉ pgadmissions@glasgow.ac.uk
🌐 glasgow.ac.uk/subjects/physics

POLITICS & INTERNATIONAL RELATIONS

Glasgow has a long tradition of researching and teaching politics, dating back to when Adam Smith gave a series of lectures on justice, police, revenue and arms at the University.

Politics & International Relations at Glasgow produces innovative and influential research across three main clusters:

- Comparative Politics, with an emphasis on the quality of democracy, political communication and processes of political transformation, especially in the rising powers of China and Russia. Cluster research groups include: citizens, communication and political actors; transformation.
- International Relations, especially the normative dimensions of security and EU external relations as well as development, from an empirical perspective. Associated research groups include: Historic and International Theory (HINT); Glasgow Global Security Network.
- Human Rights, with a focus on the politics of protection and the gender, sexuality, rights nexus. Associated research groups include: Gender & Sexualities Forum; Glasgow Human Rights Network.

Postgraduate taught programmes

- Chinese Studies (MSc)
- Global Security (MSc, MRes)
- Human Rights & International Politics (MSc, MRes)
- International Relations (MSc, MRes)
- Political Communication (MSc, MRes, PgDip)
- Security, Intelligence & Strategic Studies (Erasmus Mundus International Master) (IntM)
- South European Studies (Erasmus Mundus International Master) (IntM)
- Transnational Crime, Justice & Security (MSc)

Research opportunities

We offer PhDs in the following research areas:

- Chinese studies
- Citizens, communication and political actors
- Gender and sexualities forum
- Historic and international theory (HINT)
- Politics of transformation.

You may want to identify a potential supervisor and contact him or her to discuss your research proposal before you apply.

✉ socpol-pgt@glasgow.ac.uk
🌐 glasgow.ac.uk/subjects/politics/postgraduate

SCOTTISH LITERATURE

The University of Glasgow hosts the only academic unit in the UK exclusively dedicated to the teaching and research of Scottish Literature.

Established in 1971, Scottish Literature at Glasgow is regarded as a world-leading research unit with a teaching provision which covers the range of Scottish literature from the 14th century to the present day.

Our Centre for Robert Burns Studies is dedicated to Scotland's national bard, and we work closely with many contemporary authors and poets. Recent writers in residence have included the Scots Makar Liz Lochhead and novelist Louise Welsh.

As a relatively "new" subject in the academic context there is a great deal of research work still to be undertaken in Scottish literary studies. Glasgow is supremely well placed to support exciting postgraduate and postdoctoral research.

Staff members are active within the wider world of Scottish literature at home and abroad. Many of us are involved in key editions of major Scottish writers (notably Robert Burns, James Hogg, Walter Scott, Hugh MacDiarmid and Allan Ramsay) and many have published key critical texts on a wide range of Scottish literary subjects.

Research opportunities

We offer the following research study options: PhD, MLitt, MPhil and MRes.

The MPhil in Scottish Literature allows you to undertake an independent piece of research in one year, providing you with grounding for further doctoral study.

Topics in which we would welcome postgraduate research include:

- Scottish literature of the Renaissance
- 18th-century literary tradition
- Robert Burns studies
- Scottish romanticism
- 20th-century Scottish modernism
- Contemporary Scottish literature.

You may want to identify a potential supervisor and contact him or her to discuss your research proposal before you apply.

✉ critstudies-currentpgs@glasgow.ac.uk
🌐 glasgow.ac.uk/subjects/scottishliterature

SOCIOLOGY

Sociology at Glasgow is home to world-leading research which explores the causes, consequences and resistance to forms of social inequality.

For more than 50 years, Glasgow sociologists have been conducting empirical and scholarly research characterised by rigour, methodological innovation and committed engagement with communities and movements beyond the University.

Key areas of expertise include:

- Crime, justice and security
- Racism, nationalism, migration and translation
- Disabilities, health and illness, drug use
- Gender and sexualities
- Critical studies of media and digital technologies
- Theoretical, historical and comparative cultural research.

Postgraduate taught programmes

Our programmes provide you with the intellectual and methodological skills to critically investigate a range of crucial social questions and developments.

- Antiquities Trafficking & Art Crime (PgCert) (online)
- Criminology (MRes)
- Criminology & Criminal Justice (MSc)
- Equality & Human Rights (MSc)
- Equality & Human Rights (MRes)
- Global Health (MSc)
- Global Migrations & Social Justice (MSc)
- Global Migrations & Social Justice (MRes)
- Media, Communications & International Journalism (MSc)
- Sociology (MSc)
- Sociology & Research Methods (MRes)
- Transnational Crime, Justice & Security (MSc)

Research opportunities

We support PhDs involving research into all the areas identified above, and which is informed by sociological, criminological or anthropological approaches. We particularly welcome research that makes use of novel methods, or which might be pursued in collaboration with non-academic partners.

You may want to identify a potential supervisor and contact him or her to discuss your research proposal before you apply.

✉ matt.dawson@glasgow.ac.uk
🌐 glasgow.ac.uk/subjects/sociology

THEATRE STUDIES

Glasgow is an internationally recognised centre of excellence for the teaching, practice and research of Theatre Studies.

Glasgow is ranked 1st in the UK for Drama, Dance & Cinematics (Complete University Guide 2020). Our courses are grounded in a deep critical engagement with a range of forms and practices of theatre. On-campus facilities include a theatre, cinema, video-editing suite and performance studio.

We combine historical, theoretical and practice-based approaches to learning. Our close industry connections provide opportunities to learn from and work with practitioners and organisations of national and international standing.

Our visionary alumni include multi-award-winning director, John Tiffany; award-winning comedian, Richard Gadd and Artistic Director/Chief Executive of the National Theatre of Scotland (NTS), Jackie Wylie.

If you study with us, you will be taught in small seminars, workshops and supervisions, and supported to develop critical and creative skills that prepare you for a wide variety of careers.

Postgraduate taught programmes

Our Masters programmes benefit from close links to industry, such as Playwrights' Studio Scotland, the Edinburgh International Festival and the NTS.

- Playwriting & Dramaturgy (MLitt)
- Theatre & Performance Practices (MLitt)
- Theatre Studies (MLitt)

Research opportunities

We offer the following research study options: PhD, MLitt, MPhil and MRes.

Topics in which we would welcome postgraduate research include:

- Dramaturgical practices and playwriting
- Contemporary European theatre and performance practices
- Live art and interdisciplinary practice
- Media and digital arts
- Ecology, environment and heritage
- History and historiography
- Queer/gender theory
- Social/political arts practices and theory.

You may want to identify a potential supervisor and contact him or her to discuss your research proposal before you apply.

✉ cca-pgcomm@glasgow.ac.uk
🌐 glasgow.ac.uk/subjects/theatre

THEOLOGY & RELIGIOUS STUDIES

Theology or divinity has been taught at the University since its foundation in 1451.

Theology & Religious Studies incorporates academic and vocational teaching and research across monotheistic traditions (both religious and secularised), as well as their engagement with other world faiths. All of our subjects can be studied from within or without a personal faith base.

If you choose to study with us, you can benefit from our multidisciplinary approach and supportive environment for learning. Glasgow has built its reputation for excellence in traditional fields of theology such as:

- Practical, and modern systematic theology
- Hermeneutics
- Church history
- Catholic moral theology
- Biblical studies
- Theology and the arts.

Additionally, Glasgow has a strong profile in Islam, Sufism, religion in modern Iran and Judaism.

Postgraduate taught programmes

Our Masters programmes cover the following subject areas:

- Ancient Cultures (MSc)
- Church History & Theology (MTh)
- Ministry, Theology & Practice (MTh).

Research opportunities

We offer the following research study options: PhD, MPhil/MTh, MLitt (Theology and Creative Practice) and MRes.

Our main collective research topics are:

- Religion and politics
- The construction of religion as a modern category
- Mysticism and spirituality
- Religion and identity
- Scripts, scriptures and textual analysis
- Applied theology and theory of religion
- History of religion
- Theology through creative practice.

You may want to identify a potential supervisor and contact him or her to discuss your research proposal before you apply.

✉ critstudies-currentpgs@glasgow.ac.uk
🌐 glasgow.ac.uk/subjects/theology

URBAN STUDIES

Urban Studies at Glasgow is currently ranked top in the UK for Architecture, Built Environment and Planning (REF 2014).

We are proud that 50% of our research outputs were judged to be world-leading and 42% internationally excellent in REF 2014. Within the field of Urban Studies, research spans all aspects of social and urban policy, including social, economic and physical change in cities and a focus on communities, disability, governance, health, housing, inequalities, planning, welfare reform, transport and real estate.

You will learn from academics considered leaders in their fields and gain vital practical knowledge for shaping places, strengthening communities and improving policymaking.

Postgraduate taught programmes

- City Planning (MSc)
- City Planning & Real Estate Development (MSc)
- Housing Studies (MSc, PgDip)
- International Real Estate & Management (MSc)
- Public & Urban Policy (MSc, PgDip)
- Public Policy & Management (MSc)
- Public Policy Research (MRes)
- Real Estate (MSc, PgCert)
- Spatial Planning (PgCert)
- Urban Analytics (MSc)
- Urban Research (MRes)
- Urban Studies (PgCert)
- Urban Transport (MSc)

Research opportunities

We offer PhDs in the following research areas:

- Crime
- Disability
- Education
- Health
- Housing
- Labour markets
- Planning
- Real estate
- Systems of governance
- The environment
- Urban analytics
- Urban transport
- Welfare reform
- Youth policy.

You may want to identify a potential supervisor and contact him or her to discuss your research proposal before you apply.

✉ socpol-urban-pgadmin@glasgow.ac.uk
🌐 glasgow.ac.uk/subjects/urbanstudies

VETERINARY MEDICINE

Glasgow is a global centre for veterinary medicine excellence, attracting students, researchers and clinicians from around the world.

Our internationally accredited school provides an expert referral centre, via the Small Animal Hospital, the Weipers Centre for Equine Welfare and the Scottish Centre for Production Animal Health & Welfare for animal owners and referring practitioners throughout the UK.

We are ranked 1st in the UK for Veterinary Medicine (Complete University Guide 2020).

Veterinary medicine research at Glasgow has had lasting impacts in the animal welfare industry and charities, global health bodies and government policymaking, and a broad range of commercial industry. Key areas of research excellence include:

- Infectious disease
- Comparative medicine and biology
- Clinical veterinary science.

Postgraduate taught programmes

- Advanced Practice in Veterinary Nursing (MSc, PgDip, PgCert) (online)
- Animal Nutrition (MSc)
- One Health (MSc, PgDip, PgCert) (online)

Research opportunities

We offer PhDs in the following research areas:

- Veterinary epidemiology
- Advanced veterinary diagnostic imaging
- Equine infectious disease
- Equine, ruminant and poultry nutrition
- Veterinary microbiology
- Small animal endocrinology, nutrition and obesity
- Veterinary reproduction
- Veterinary neurology
- Veterinary oncology
- Veterinary pathology
- Veterinary public health
- Small animal cardiology.

You may want to identify a potential supervisor and contact him or her to discuss your research proposal before you apply.

✉ mvls-gradschool@glasgow.ac.uk
🌐 glasgow.ac.uk/subjects/veterinary

WAR STUDIES

The University is the home of the Scottish Centre for War Studies.

The Scottish Centre for War Studies was established to promote research in, and understanding of, war and conflict in all its aspects. It is based within the subject of History in the School of Humanities but seeks to develop links across a range of related subjects and encourages interdisciplinarity.

With contributions from a wide-ranging group of scholars, including visiting specialists, the Centre presents a unique opportunity to study the theory and practice of war and conflict, from causes to consequences, in a wide range of aspects and settings, from the Middle Ages to the present day, from Britain and Europe to the Americas and the Near and Far East.

The Centre's term-time research seminars give you the opportunity to develop insights and understanding from the latest research in diverse aspects of the subject.

Postgraduate taught programmes

The MSc aims to challenge, educate and engage by exposing you to a wide range of different ideas about war.

- War Studies (MSc)

Research opportunities

We offer the following research study options: PhD, MLitt and MPhil.

Our research areas include:

- Scottish military history
- Medieval warfare
- Early modern warfare
- The Napoleonic Wars
- 19th- and 20th-century international relations
- Intelligence and international relations
- The Cold War and wars of decolonisation
- Ideas of peace and peace movements
- Conflict archaeology
- Ethics of war and humanitarian intervention
- Counter-insurgency and revolutionary war
- Genocide in a global perspective
- International security from historical and contemporary perspectives.

You may want to identify a potential supervisor and contact him or her to discuss your research proposal before you apply.

✉ humanities-pg@glasgow.ac.uk
🌐 glasgow.ac.uk/research/az/warstudies

A-Z OF PROGRAMMES

A	PAGE	Clinical Psychology (DClinPsy)	59
Academic Practice (MEd)	47	Clinical Trials & Precision Medicine (MSc)	42
Adult Education, Community Development & Youth Work (MEd/PgDip)	47	Comparative Literature (MLitt)	58
Adult Education for Social Change (IntM)	47	Composition & Creative Practice (MMus)	59
Advanced Educational Leadership (PgCert Online Distance Learning)	47	Computer Systems Engineering (MSc)	48
Advanced Lymphoedema Management (PgCert)	57	Computing Science (MSc)	44
Advanced Nursing Science (MSc)	60	Conflict Archaeology & Heritage (MSc/PgDip)	40
Advanced Practice in Health Care (MSc(MedSci)/PgDip/PgCert)	60	Conservation Management of African Ecosystems (MSc)	41
Advanced Practice in Veterinary Nursing (MSc/PgDip/PgCert Online Distance Learning)	64	Corporate & Financial Law (LLM)	54
Advanced Statistics (MRes)	55	Corporate Governance & Accountability (MSc)	40
Aerospace Engineering (MSc)	48	Creative Industries & Cultural Policy (MSc)	56
Aerospace Engineering & Management (MSc)	48	Creative Writing (MLitt)	45/49
Ancient Cultures (MSc)	40/42/44/63	Creative Writing (MLitt Online Distance Learning)	45/49
Animal Nutrition (MSc)	64	Criminology (MRes)	62
Animal Welfare Science, Ethics & Law (MSc/PgDip)	41	Criminology & Criminal Justice (MSc)	62
Antiquities Trafficking & Art Crime (PgCert Online Distance Learning)	62	Critical Care (MSc/PgDip/PgCert)	57
Applied Linguistics (MSc)	49	Critical Care & Leadership (MSc Online Distance Learning)	57
Applied Neuropsychology (MSc(MedSci)/PgDip)	59	Critical Care, Leadership & Management (MSc)	57
Archaeology (MSc)	40	Curatorial Practice (Contemporary Art) (MLitt)	52
Art History (MLitt)	52		
Art History: Collecting & Provenance in an International Context (MSc)	52	D	
Art History: Dress & Textile Histories (MLitt)	52	Data Analytics (MSc)	55
Art History: Modern Material Artefacts (MSc)	52	Data Analytics (MSc/PgDip/PgCert Online Distance Learning)	55
Art History: Technical Art History, Making & Meaning (MLitt)	52	Data Science (MSc)	44
Assessment in Education (MSc Online Distance Learning)	47	Developing & Evaluating Interventions (MSc/PgDip/PgCert/CPD)	51
Asset Pricing & Investment (MSc)	46	Development Studies (MSc)	46
Astrophysics (MSc)	61	Diabetes (MSc(MedSci))	42
		Diploma in Professional Legal Practice (PgDip)	54
B			
Bioinformatics (MSc/PgDip/PgCert)	54	E	
Biomedical Engineering (MSc)	48	Early Modern History (MSc/PgDip)	52
Biomedical Sciences (Integrative Mammalian Biology) (MRes)	54	Ecology & Environmental Biology (MRes)	41
Biomedical Sciences (MRes)	54	Economic Development (MSc)	46
Biomedical Sciences (MSc)	54	Economics (MRes)	46
Biostatistics (MSc)	55	Economics, Banking & Finance (MSc)	46
Biotechnology (MSc)	58	Education (Primary/Secondary) (PGDE)	47
Biotechnology & Management (MSc/PgDip)	58	Education (MSc Online Distance Learning)	47
Brain Sciences (MSc)	59	Education Policies for Global Development (IntM)	47
		Education, Public Policy & Equity (MSc)	47
C		Educational Leadership (MEd)	47
Cancer Research & Precision Oncology (MSc)	41	Educational Studies (MEd)	47
Cardiovascular Sciences (MSc(MedSci))	42	Educational Studies (MSc)	47
Celtic Studies (MLitt)	42	Educational Studies for Adult, Youth & Community Contexts (MSc)	47
Central & East European, Russian & Eurasian Studies (IntM)	43	Electronics & Electrical Engineering (MSc)	48
Chemistry (MSc)	43	Electronics & Electrical Engineering & Management (MSc)	48
Chemistry with Medicinal Chemistry (MSc)	43	Electronics & Photonics Manufacturing (MSc)	48
Child Health (PgCert)	57	Endodontics (MSc(DentSci))	45
Childhood Practice (MEd/PgDip)	47	English Language & Linguistics (MSc)	49
Children's Literature & Literacies (MEd)	47	English Literature (MLitt)	49
Children's Literature, Media & Culture (IntM)	47	English Literature: American Modern Literature (MLitt)	49
Chinese Studies (MSc)	61	English Literature: Fantasy (MLitt)	49
Church History & Theology (MTh/PgDip/PgCert)	63	English Literature: Medieval & Early Modern Literature & Culture (MLitt)	49
City Planning (MSc)	64	English Literature: Modernities – Literature, Culture, Theory (MLitt)	49
City Planning & Real Estate Development (MSc)	64	English Literature: Romantic Worlds (MLitt)	49
Civil Engineering (MSc)	48	English Literature: Victorian Literature (MLitt)	49
Civil Engineering & Management (MSc)	48	Enhanced Practice in Education (Dumfries Campus) (MSc)	47
Classics (MLitt)	44	Environment & Sustainable Development (MSc)	46
Clinical Critical Care (MSc Online Distance Learning)	57	Environment, Culture & Communication (Dumfries Campus) (MLitt)	50
Clinical Genetics (MSc(Med Sci))	57	Environmental Statistics (MSc)	55
Clinical Neuropsychology (MSc(MedSci))/PgDip	59	Epidemiology of Infectious Diseases & Antimicrobial Resistance (MSc)	41
Clinical Neuropsychology Practice (PgCert)	59	Equality & Human Rights (MRes)	62
Clinical Nutrition (MSc(MedSci))	57	Equality & Human Rights (MSc)	62
Clinical Pharmacology (MSc(MedSci))	42		

Film & Television Studies (MLitt)	50
Film Curation (MSc)	50
Filmmaking & Media Arts (MSc)	50
Finance & Economic Development (MSc)	46
Finance & Management (MSc)	46/55
Financial Economics (MSc)	46
Financial Forecasting & Investment (MSc)	46
Financial Risk Management (MSc)	46
Financial Technology (MSc)	40
Food Security (MSc)	58
Forensic Toxicology (MSc(MedSci))	57
G	
Gender History (MSc/PgDip)	52
Genetic & Genomic Counselling (with Work Placement) (MSc(MedSci))	57
Geoinformation Technology & Cartography (MSc/PgDip/PgCert)	51
Geomatics & Management (MSc)	51
Geospatial & Mapping Sciences (MSc/PgDip/PgCert)	51
Global Economy (MSc)	46
Global Health (MSc)	51/62
Global Markets, Local Creativities (IntM)	46
Global Mental Health (MSc/PgDip/PgCert)	51
Global Mental Health (MSc/PgDip/PgCert Online Distance Learning)	51
Global Mental Health (Health Promotion specialism) (MSc)	51
Global Mental Health (Health Technology Assessment specialism) (MSc)	51
Global Mental Health (Research Methods specialism) (MSc)	51
Global Migrations & Social Justice (MRes)	62
Global Migrations & Social Justice (MSc)	62
Global Security (MRes)	61
Global Security (MSc)	61
H	
Health Technology Assessment (MSc/PgDip/PgCert Online Distance Learning)	51
Healthcare Chaplaincy (PgCert)	57
Health Professions Education / Health Professions Education (with Research) (MSc/MSc (with Research) /PgDip/PgCert Online Distance Learning)	57
Health Services Management (MSc/PgDip/PgCert)	57
Historically Informed Performance Practice (in conjunction with the Royal Conservatoire of Scotland) (MMus)	59
History (MSc/PgDip)	46/52
History (with an emphasis on the History of Medicine) (MSc)	46
Housing Studies (MSc/PgDip)	64
Human Anatomy (PgCert)	54
Human Geography: Spaces, Politics, Ecologies (MRes)	51
Human Nutrition (MSc(MedSci))	57
Human Rights & International Politics (MRes)	61
Human Rights & International Politics (MSc)	61
I	
Immunology & Inflammatory Disease (MSc/PgDip/PgCert)	53
Inclusive Education: Research, Policy & Practice (MEd)	47
Inclusive Education: Research, Policy & Practice (PgDip/PgCert Online Distance Learning)	47
Industrial Heterogeneous Catalysis (MRes)	43
Infection Biology (MSc/PgDip/PgCert)	53
Infection Biology (Microbiology specialism) (MSc)	53
Infection Biology (Parasitology specialism) (MSc)	53
Infection Biology (Virology specialism) (MSc)	53
Information Management & Preservation (MSc/PgDip/PgCert)	53
Information Security (MSc)	44
Information Technology (MSc)	44
Intellectual Property & the Digital Economy (LLM)	54

International Accounting & Financial Management (MAcc)	40
International Banking & Finance (MSc)	46
International Business (MSc)	55
International Commercial Law (LLM)	54
International Competition Law & Policy (LLM)	54
International Corporate Finance & Banking (MSc)	40
International Economic Law (LLM)	54
International Finance (MFin)	40
International Financial Analysis (MSc)	40
International Human Resource Management & Development (MSc)	55
International Law (LLM)	54
International Law & Security (LLM)	54
International Management & Design Innovation (MSc)	55
International Real Estate & Management (MSc)	64
International Relations (MRes)	61
International Relations (MSc)	61
International Strategic Marketing (MSc)	55
In Headship (PgDip)	47
Into Headship (PgCert)	47
Investment Banking & Finance (MSc)	46
Investment Fund Management (MSc)	46
IT Cyber Security (MSc)	44
L	
Land & Hydrographic Surveying (MSc/PgDip/PgCert)	51
Land & Hydrographic Surveying with Work Placement (MSc)	51
Law (LLM)	54
Law (MRes)	54
Leadership in Health & Social Care (PgCert Online Distance Learning)	60
M	
Management & Sustainable Tourism (Dumfries Campus) (MSc)	50/55
Management with Enterprise & Business Growth (MSc)	55
Management with Human Resources (MSc)	55
Management with International Finance (MSc)	55
Management (MRes)	55
Management (MSc)	55
Material Culture & Artefact Studies (MSc/PgDip)	40
Mathematics / Applied Mathematics (MSc)	55
MBA (Master of Business Administration) (MBA)	55
Mechanical Engineering (MSc)	48
Mechanical Engineering & Management (MSc)	48
Mechatronics (MSc)	48
Media Management (MSc)	56
Media, Communications & International Journalism (MSc)	62
Medical Genetics & Genomics (MSc(MedSci))	57
Medical Physics (MSc)	57
Medical Visualisation & Human Anatomy (MSc)	54
Medieval History (MSc/PgDip)	52
MGB (Master of Global Business) (MGB)	55
Middle Leadership & Management in Schools (PgCert)	47
Ministry, Theology and Practice (MTh)	63
Modern History (MSc/PgDip)	52
Museum Education (MSc)	47
Museum Education (MSc Online Distance Learning)	47
Museum Studies (MSc/PgDip/PgCert)	40/52/53
Music Industries (MSc)	59
Musicology (MMus)	59
N	
Nanoscience & Nanotechnology (MSc)	48
Nuclear & Environmental Physics (MSc)	61
O	
One Health (MSc/PgDip/PgCert Online Distance Learning)	64
Oral & Maxillofacial Surgery (MSc(DentSci))	45
Oral Sciences (MSc)	45

P	
Pathology, Molecular (MSc/PgDip/PgCert: Blended learning)	57
Philosophy (MSc)	60
Philosophy (conversion) (MSc)	60
Philosophy of Mind & Psychology (MSc)	60
Physics: Advanced Materials (MSc)	61
Playwriting & Dramaturgy (MLitt)	63
Political Communication (MRes)	61
Political Communication (MSc/PgDip)	61
Population Health Sciences (MSc/PgDip/PgCert Online Distance Learning)	51
Precision Medicine (MSc)	42
Primary Care (MSc/PgDip/PgCert Online Distance Learning)	51
Product Design Engineering (MSc)	48
Professional Practice with PGDE (MEd)	47
Psychological Science (conversion) (MSc)	59
Psychological Science, Research Methods of (MSc)	59
Psychological Studies (conversion) (MSc)	47/59
Psychology (conversion) (MSc Online Distance Learning)	59
Public & Urban Policy (MSc/PgDip)	64
Public Health (MPH)	51
Public Health (MPH Online Distance Learning)	51
Public Health (Data Science) (MPH)	51
Public Health (Epidemiology) (MPH)	51
Public Health (Health Economics) (MPH)	51
Public Health (Health Promotion) (MPH)	51
Public Policy & Management (MSc)	64
Public Policy Research (MRes)	64
Q	
Quantitative Finance (MSc)	46
Quantitative Methods in Biodiversity, Conservation & Epidemiology (MSc/PgDip)	41
Quantum Technology (MSc)	61
R	
Real Estate (MSc, PgCert)	64
Robotics and AI (MSc)	48
Russian, East European & Eurasian Studies (MSc)	43
Russian, East European & Eurasian Studies (MRes)	43

S	
Scottish History (MSc/PgDip)	52
Security, Intelligence & Strategic Studies (IntM)	61
Sensor & Imaging Systems (MSc)	61
Socio-Legal Studies (MRes)	54
Sociology (MSc)	62
Sociology & Research Methods (MRes)	62
Software Development (MSc)	44
Sound Design & Audiovisual Practice (MSc)	59
South European Studies (IntM)	61
Spatial Planning (PgCert)	64
Speech, Language & Sociolinguistics (MSc)	49
Sport and Exercise Science & Medicine (MSc)	42
Sport and Exercise Science & Medicine (MSc/PgDip/PgCert Online Distance Learning)	42
Sports Nutrition (PgCert)	57
Statistics (MSc)	55
Stem Cell Engineering for Regenerative Medicine (MSc)	58
Structural Engineering (MSc)	48
Sustainable Energy (MSc)	48
Sustainable Water Environments (MSc)	51
T	
Teacher Leadership & Learning (PgCert)	47
TESOL: Teaching of English to Speakers of Other Languages (MEd)	47
TESOL: Teaching of English to Speakers of Other Languages (MSc)	47
Textile Conservation (MPhil)	52
Theatre & Performance Practices (MLitt)	63
Theatre Studies (MLitt)	63
Theoretical Physics (MSc)	61
Tourism Development & Culture (Dumfries Campus) (MSc)	50
Tourism, Heritage & Development (Dumfries Campus) (MSc)	50
Tourism, Heritage & Sustainability (Dumfries Campus) (MSc)	50
Translation Studies (MSc/PgDip/PgCert)	58
Translational Medicine (MRes)	42
Transnational Crime, Justice & Security (MSc)	61/62
U	
Urban Analytics (MSc)	64
Urban Research (MRes)	64
Urban Studies (PgCert)	64
Urban Transport (MSc)	64
W	
War Studies (MLitt)	65

FURTHER INFORMATION

This publication is intended to help you choose your programme of study at the University of Glasgow. Every effort has been made to ensure the accuracy of the information contained within this publication but it is subject to change without notice. If there is any conflict or ambiguity between information contained in this publication and the student contract (see below), then the student contract will prevail.

The student contract

By accepting an offer from the University of Glasgow, each student enters into a student contract with the University. The student contract is made up of the terms of the offer, the student terms and conditions and the University's Regulations set out in the University Calendar. The student terms and conditions and the University Calendar can be found on the University website at glasgow.ac.uk/studentcontract.

The student contract sets out: the terms on which the University will provide the relevant programme or course; the University's Regulations with which students must comply; students' other obligations to the University, our staff, and to fellow students; how the contract may be changed or ended; what to do if there is a problem; and other important information.

Validated institutions

The University is proud of its association and validation relationship with three independent institutions: The Glasgow School of Art, Scotland's Rural College and Edinburgh Theological Seminary. If you apply for a programme at one of these institutions, you will be registered with that institution and will pursue your studies there but your final degree will be conferred by the University of Glasgow. Applications to one of the validated institutions should be made to the institution concerned and not to the University.

As a student of a validated institution you are deemed to be an "associated student" of the University which entitles you to access certain University facilities. For further details of the facilities available to you please contact the institution concerned.

Publication credits:

Design:
D8 (www.d8.uk), working in conjunction with External Relations, University of Glasgow.

Photography:
Reuben Paris
University Photographic Unit

Printed:
MBM Print SCS Ltd

Additional photography credits:

Globe,
Shutterstock.com

Kelvingrove Park,
Shutterstock.com

Buchanan Street,
Shutterstock.com

SSE Hydro,
Nigel Young

Eilean Donan Castle,
VisitScotland/Kenny Lam

The Three Sisters, Glencoe,
VisitScotland/Kenny Lam

Kayakers on Camusdarach beach,
VisitScotland/Chris Close

Edinburgh,
Shutterstock.com

CONNECT WITH US



@UofGlasgow

Discover our world changers at
glasgow.ac.uk/worldchangers

University of Glasgow
Glasgow G12 8QQ

General Switchboard
Tel: +44 (0)141 330 2000

glasgow.ac.uk/enquirenow

#UofGWorldChangers

VISIT US

THURSDAY 14 NOVEMBER 2019

We hope you can join us at our Postgraduate Open Day. It's an invaluable opportunity to find out more about your subject of interest, meet staff and current students and gather information and advice on important topics such as admissions, finance and accommodation.

glasgow.ac.uk/visitus

