



The
University
Of
Sheffield.

Postgraduate
Research
Guide.



Push the boundaries.

**Behind every world-changing
discovery is someone like you.**

www.sheffield.ac.uk/postgraduate/phd



A World Top 100 University

QS World University Rankings 2019

99%

**of research submitted
is internationally recognised,
excellent or world leading**

Research Excellence Framework 2014

Russell Group Top 10 for research output

Research Excellence Framework 2014

6

Nobel Prize winners

More than 250

**full scholarships awarded by the
University of Sheffield each year**

A vibrant community of over 3,500 PhD students and 1,400 supervisors

Number 1

**in the UK for engineering
research income and investment**

2017-18 financial year

You're embarking on a journey

You're going to work harder than you've ever worked. You're going to think more deeply than you've ever thought. You're going to produce a piece of original research. Something that advances understanding in your chosen field and makes a difference to people's lives. To get there, you're going to push yourself to the limits of your ability.

And we're going to help you

As a global research university, we're committed to tackling big questions that affect the whole planet. We don't see research as a hobby, and we know you don't either. You wouldn't even be considering a challenge like this if you didn't want to push the boundaries. Intellectual enquiry and critical thinking are already second nature to you.

At Sheffield, you will join a supportive community of scholars who share your passion. Our reputation attracts some of the leading minds in the world. You will work alongside them, with a strong sense of purpose, in an atmosphere of tolerance, inclusivity and respect.

You will find your talent is nurtured here. You will find your ambitions are taken seriously. There will be moments when you don't think you can do any better, go any further. And in those moments you will surprise yourself. It really will be quite a journey.

Are you ready to take the first steps? Then let's go.



Image taken by Dr Aga Novak in Svalbard, Norway whilst studying the Austre and Vestre Gornfjordbreen glaciers. Dr Novak completed her PhD at the University of Sheffield in the Department of Geography, and she now works for the University Centre in Svalbard (UNIS).

**A vibrant community
with over 3500
PhD students.**

Welcome to the team



Your PhD is a big commitment but you won't be alone. Our departments, research centres and groups are supportive environments where academics, students and post-docs work together. As a postgraduate researcher, you'll be a key member of the team.

You will also be part of a community of postgraduate researchers, working and socialising together, facing the same challenges at the same time. We provide opportunities for you to get together as often as possible, so you can share ideas, learn from each other and talk things through.



"I have enjoyed the wide range of opportunities I have had at Sheffield. My PhD is multidisciplinary meaning I work across chemistry and molecular biology. I was able to form a collaboration whilst attending a Sheffield conference that has been vital in progressing my research. Also the ability to teach to undergraduate students during a PhD at Sheffield is really rewarding."

Kirsty Smitten
PhD in Chemistry and Molecular Biology and Biotechnology
Funding: BBSRC



"As a PhD student in Sheffield, I take part in a weekly group meeting to present my work alongside other students and supervisors. We comment on each other's plans, giving advice and sharing best practice on how to move forward with our research. This regular communication allows us to benefit from the experiences of other projects."

Ahmed Bukhari
PhD Medicine
Funding: King Abdulaziz University (Kingdom of Saudi Arabia)

How we support you

“I have enjoyed the way Sheffield has enabled me to develop myself beyond my research. The opportunity to attend workshops and seminars organised by the Think Ahead team relating to my Doctoral Development Programme has been hugely beneficial.”

Opusaziba T Aranye Okilo
PhD Chemical and Biological Engineering
Self funded

“I have felt support and enthusiasm from the University’s staff and students. The University offers a range of societies, diverse events and training opportunities, which allow you to develop your skills and meet new people. I have also felt welcomed in Sheffield, especially by the community in the local area where I am carrying out my research, they really value the University’s work.”

María del Carmen Redondo Bermúdez
PhD in Landscape Architecture
Funding: Grantham Centre for Sustainable Futures

Studying at a world-class university like Sheffield means you get world-class support.

We treat every student as an individual, taking your personal needs and career goals into account, focusing on your development.

Professional development

We provide a structured programme, identifying your needs and assessing your progress.

Skills training

Qualitative and quantitative research methods, programming – whatever you need. A lot of this training is delivered by our specialist doctoral training centres.

Resources

Our libraries give you access to digital and print resources, study space, digital skills training and IT support. We have a specialist librarian for each subject area.

Careers support

Our award-winning Think Ahead framework covers everything from career planning to interview techniques.

Quality contact time

At the heart of this support network is your supervisor. Open, honest, and always there to listen, your supervisor will get to know you and your work well.

“Sheffield has an excellent academic reputation. I have access to cutting-edge equipment and my supervisor is approachable and supportive. I have really enjoyed meeting a diverse range of people working in different fields. Experiencing research from different groups and projects helps to improve my understanding of the work I am undertaking.”

Idris Gulenc
PhD in Materials Science and Engineering
Funding: Republic of Turkey, Ministry of National Education

Your career starts here

“My PhD was more than just about the research. One of the best advantages of studying for a PhD at Sheffield is the sheer number of opportunities available. It was only after starting my first position that I realised how beneficial this would be throughout my future career. Teach a masters student, write for the local magazine, try different things; you never know where your career will take you.”

Dr Joseph Clarke
PhD in Chemistry
Communications Manager at
Manchester Cancer Research Centre (MCRC)

“My time at Insigneo and the University opened doors for me, both personally and professionally. I am now developing computational models to predict the distribution, efficacy and adverse effects of medicines. One of the main reasons I started studying engineering and bioengineering was to contribute towards the future of healthcare, and I am so pleased I have been able to do that in my career so far.”

Dr Sofia Ferreira
PhD in Mechanical Engineering, Insigneo Institute for in silico Medicine
Research Associate at Certara UK

Your PhD can take you way beyond academia. The specialist and transferable skills you'll learn are highly sought-after in every sector.

Some graduates work within their field – pharmaceuticals, law, engineering, the arts, education and so on. Others branch out into areas such as business, finance and media. They are analysts, entrepreneurs, policy developers, civil servants, consultants and professional communicators.

A PhD from Sheffield puts you ahead of the curve. You might go into a job that hasn't been invented yet. You might even invent it yourself.

Transferable skills

You'll follow a programme with an emphasis on professional, transferable skills such as leadership, organising complex projects, critical thinking and communicating your ideas. We're also very strong on:

- Public engagement
- Enterprise
- Intellectual property (IP)
- Ethics

Professional experience

There are schemes that provide funding for work placements, work-shadowing visits and additional training. You'll get the opportunity to teach undergraduates. You can also get involved in outreach and public engagement projects.

Networking

We have regular events on campus where employers come to talk to students about job opportunities. Engagement with our alumni network encourages our students to understand the range of careers open to them.

One-to-one advice

We're here to advise on career development throughout your PhD and after you graduate. You will have access to academic and professional mentoring. We can even help you develop your own business ideas.

World-class research – in every discipline

Our reputation for excellence attracts the best minds in the world. These exceptional people are drawn to Sheffield by the opportunity to work at the frontiers of knowledge on projects that really matter. Working together across disciplines, their research influences policy, boosts growth, enriches culture and changes lives.

Our four Flagship Research Institutes are taking an interdisciplinary approach to the biggest issues facing the planet.

Our **Healthy Lifespan Institute**, the first of its kind in the UK, combines medical expertise with evidence-based social policy to tackle multi-morbidity. They're developing new strategies that help people to live healthier, independent lives for longer, reducing the cost of care.

Drawing on expertise from science, engineering, the arts and humanities and social sciences, our **Institute for Sustainable Food** aims to transform the way we produce and consume food. From plant and soil biology to food justice and equity, their research drives technological innovation to help feed our world.

The **Neuroscience Institute** works to improve the lives of patients and families affected by conditions including motor neurone disease, Alzheimer's disease, chronic pain and stroke. Their collaborative approach converts translational neuroscience into medical benefits.

Sheffield's **Energy Institute** is home to one of the largest teams of its kind in Europe. Through innovation and collaboration, they're finding reliable, low-carbon solutions to the world's biggest energy challenges.

Where will your research take you?

Our world-class research changes lives. There are lots of ways for you to be a part of that.

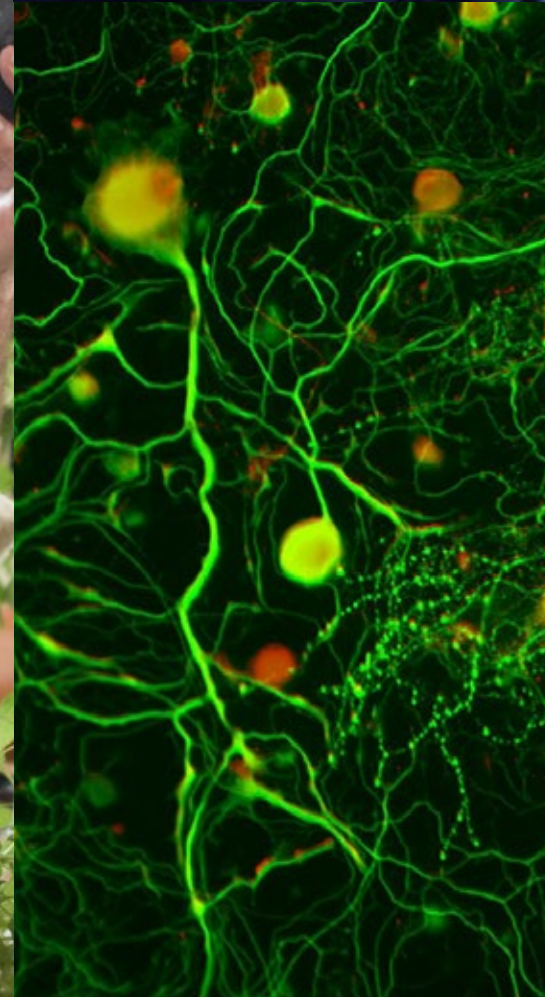
Harry Wright's PhD focuses on using polyurethane foam to grow high-value crops. When his supervisor visited a refugee camp in Jordan and found a warehouse full of discarded foam mattresses, Harry was brought in to set up a project, training around 200 refugees to use all that foam as an alternative to soil.

Harry's project helped people pull together and brought much-needed fresh food to an unforgiving environment. It was adapted to create a hydroponic farm in Sheffield that trains unemployed and low-skilled workers and teaches local school children about sustainability.

People. Connections. The local and the global. Harry's journey is a perfect example of what this is all about. Every PhD makes a difference. Where will yours take you?

The Univ.
Of Sheff.
Instn. for
Sustnbl. Fd.

OD



Influence policy

You could be part of a pioneering project like our research into minimum pricing for alcohol. Recommendations from our School of Health and Related Research have just become law in Scotland, where ministers are confident they will save hundreds of lives.

Bring together disciplines

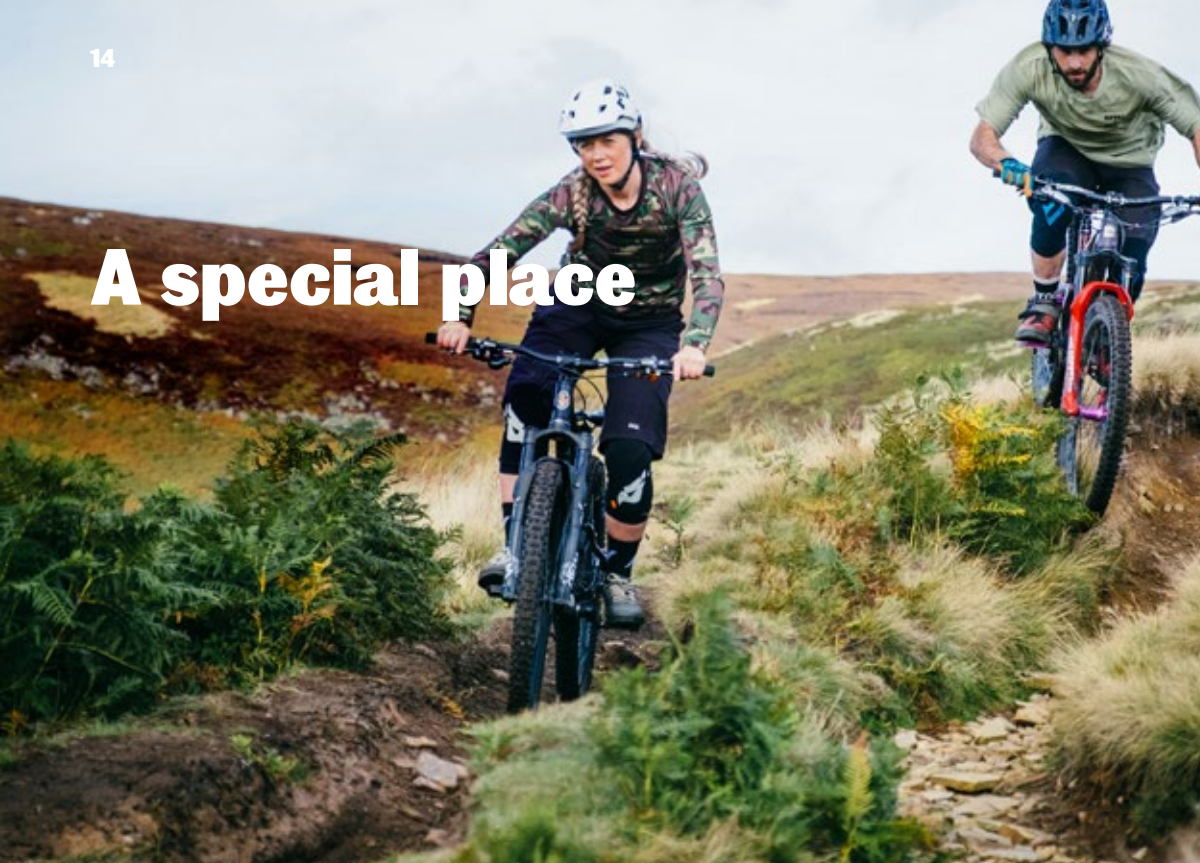
You could find yourself involved in a cutting-edge collaboration like the one between the School of Dentistry and the Department of Materials Science and Engineering where researchers are helping people with long-term pain issues. Combining neuroscience with 3D printing expertise, they're developing a new way to repair nerve damage, using biocompatible materials.

Develop vital new research

Our people are among the best in their fields. They know where the gaps are in current knowledge. Like researchers in the Department of Sociological Studies, whose extensive work on social policy and ageing suggests we must do more to understand and prevent the chronic conditions that force so many people to stop work.

www.sheffield.ac.uk/research

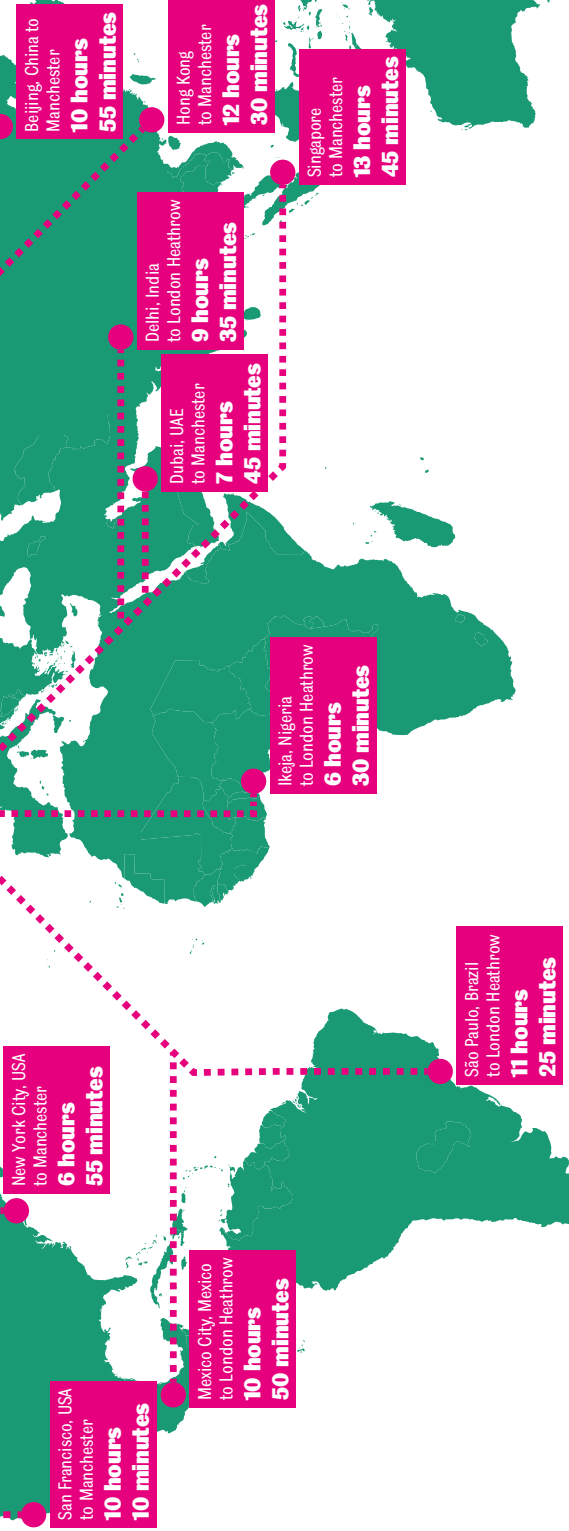
A special place



Sheffield is a major city on the edge of the Peak District National Park, a world-famous area of outstanding natural beauty. One third of the city is actually inside the park, so it's very easy to get there.

This cosmopolitan city is home to people from all over the world. It's a cultural centre with a classical music scene, galleries linked to the V&A and some of the best theatres outside London. The nightlife is vibrant, eclectic, diverse.

Sheffield is also a green city, with over 250 parks and woodlands – another reason people are so happy to live here. This friendly, welcoming city has a strong sense of a community. As a PhD student here, you'll be part of it.



We're here for you

We want you to be happy, healthy and secure so you can focus on your studies.



Health and wellbeing

We have our own health centre on campus, with GPs, nurses and a full range of National Health Service provision. It's open all year round.

We also have dedicated mental health support so you can access help if you need it.

www.sheffield.ac.uk/health

Faith, religion and belief

The Chaplaincy Centre provides for students of all religions and none. It has a social space and a quiet room for personal reflection, meditation and prayer. We have advisers and chaplains from many religions, faiths and beliefs.

www.sheffield.ac.uk/chaplaincy

Childcare

The Students' Union runs a nursery for children aged six months to five years old. It's Ofsted registered (300762) and fees are subsidised according to family income.

www.sheffield.ac.uk/union

Disability and dyslexia support

If you have a long-term condition or impairment that can affect your ability to study, we can provide specialist support.

www.sheffield.ac.uk/disability

Practical help

The Student Services Information Desk can help you find the answer to a range of queries.

www.sheffield.ac.uk/ssid

Independent advice

The Student Advice Centre provides free, confidential, impartial advice, information and representation on money matters, housing, academic issues and immigration.

su.sheffield.ac.uk/student-advice-centre



A global community

**28,000 students
from more than
140 countries.**

**We understand the
challenges of coming to
study in another country
and we'll support you
every step of the way.**

Are you coming to Sheffield from overseas?

We want you to feel at home here so we offer a range of additional support, including a meet and greet service and orientation programmes, to help make the transition as smooth as possible.

www.sheffield.ac.uk/ssid/international/before-you-arrive

Global Campus

Our Global Campus programme runs events and activities for international students throughout the year. The programme includes social events as well as workshops where you can practise your English and learn more about British culture.

www.sheffield.ac.uk/ssid/globalcampus

English Language Teaching Centre (ELTC)

The ELTC offers English language support before and during your PhD. If you need help meeting the English language requirements for your degree we run full-time courses throughout the year to help you reach your target level.

We also provide free subject-specific Academic English and literacy support for doctoral students in collaboration with academic departments, as well as free part-time English language classes for the partners of international students. For distance learning research students we also offer an online thesis writing course.

www.sheffield.ac.uk/eltc

International Student Support Team

The International Student Support team provides advice and information on Tier 4 student visas, short term student visas before and during your studies.

www.sheffield.ac.uk/ssid/immigration

How to apply

Investigate PhD opportunities

There are different ways you can apply for a PhD at the University of Sheffield.

- Develop your own research idea
- Join an existing project

Our PhD project directory is a great place to start finding out who's doing the kind of research you're interested in. Most opportunities will be listed here www.sheffield.ac.uk/postgraduate/phd/search

Check the entry requirements

Entry requirements may vary depending on what you study. You can find these on our department websites at www.sheffield.ac.uk/departments/academic

Check the English language requirements at www.sheffield.ac.uk/postgraduate/english-language

Collect your supporting documents

We typically require the following supporting documents, but please check the department websites for information about any specific requirements.

- Proof of your previous degree
- Academic references
- English language certificates (EU and International applicants)
- A supporting statement including a research proposal where relevant
- Curriculum vitae (CV)

www.sheffield.ac.uk/postgraduate/supporting-documents

Submit your application

When everything is in place, fill in the online application form and attach your supporting documents.

www.sheffield.ac.uk/postgraduate/phd/apply/applying

What happens next?

Your academic department will review your application and you should get a response within six weeks.

Please note that if any documents are missing from your application this may delay the process.

Research proposal

When writing your research proposal it is important that you consider the following:

What makes your idea relevant?

How does it fit into the context of current thinking on the subject? Will your research contribute something new?

What's your plan?

How will you go about answering your research question? You need to set out a workable methodology and show that it can be done in the time you have.

What resources do you need?

Describe the training, travel, materials and equipment you need and where they fit into your methodology.

www.sheffield.ac.uk/postgraduate/phd/apply/proposal

References

Most departments ask for two academic references to support your application. Try to speak to your referees before you name them in your application – this will help them write a more meaningful reference.

Funding

We award full scholarships to more than 250 PhD students every year.



“I chose to study at Sheffield because of the funding available for my PhD project, which allowed me to research full-time and develop my own placements. I work with an excellent supervisory team who are well-established in their fields, and the department itself is academically rigorous and very supportive. I also have the opportunity to volunteer with the local museum, working with the local community and getting valuable work experience for my career after academia.”

Cait Scott
PhD in Archaeology
Funding: AHRC Collaborative Doctoral Partnership

We value your talent

We are committed to investing in new academic talent and fully fund over 250 PhD students every year through a range of schemes.

To undertake a PhD you will need funding for fees, living costs and research expenses. Don't let funding be an obstacle. We reward students who show exceptional academic achievement and potential. So if you have what it takes, we will support you in finding the funding available to you.

Scholarships

There are lots of different types of scholarships available from full awards covering fees, living expenses and research costs to partial fee scholarships. We also offer scholarships for former students.

Scholarships are awarded on a competitive basis. They won't always cover all your costs so make sure you explore other funding opportunities open to you. Our website is a great place to start.

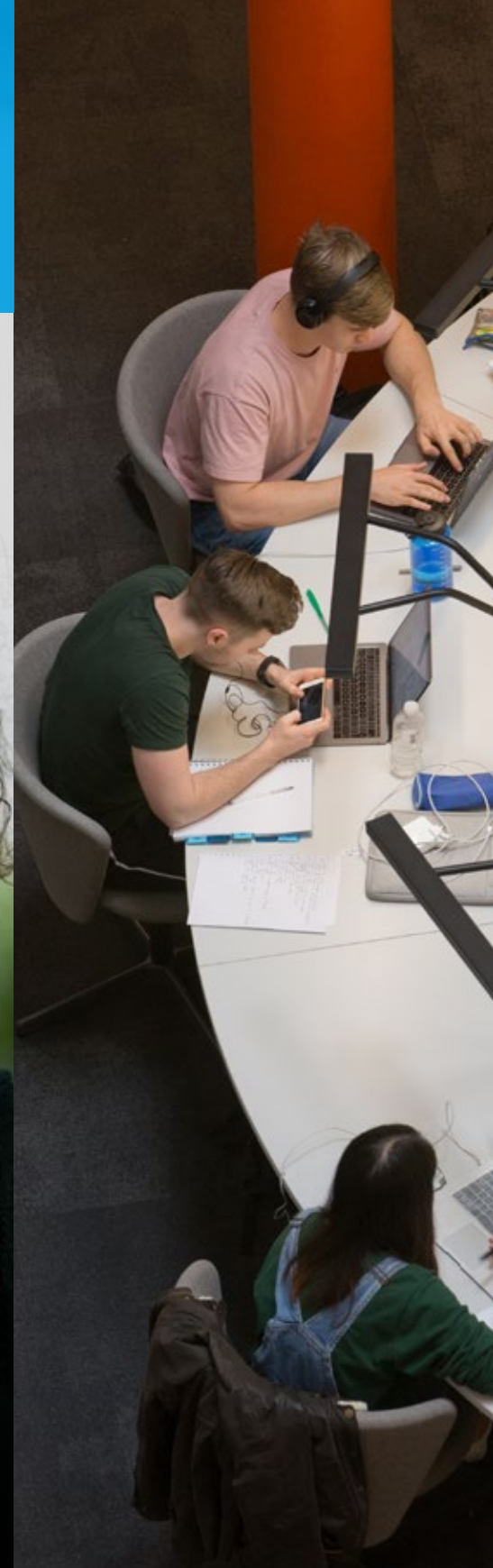
www.sheffield.ac.uk/scholarships

When to apply for funding

You can apply to many sources of funding including research councils, charities and trusts.

In many cases, you can only apply for funding once you've been offered a place. But some programmes expect you to apply for funding at the same time.

We recommend that you find out the requirements and start looking for funding as soon as you can.



Research areas

This section gives you an idea of just some of our research areas and interests. If you have an idea for a research project, talk to us.

You can also visit our website to find more detailed listings of our research areas.
www.sheffield.ac.uk/postgraduate/phd/search

Animal and Plant Sciences
www.sheffield.ac.uk/aps
Agricultural Ecology
Bioinformatics and Mathematical Biology
Climate Change Biology
Ecosystem Ecology
Evolutionary Genetics and Genomics
Microbial Ecology
Palaeoecology and Palynology
Plant Biotechnology
Population Ecology
Sustainable Agriculture
Tropical Forest Conservation
Urban Ecology

Archaeology
www.sheffield.ac.uk/archaeology
Bioarchaeology
Cultural Materials
Funerary Archaeology
Landscape Archaeology
Medieval Europe
Mediterranean Archaeology

Architecture
www.sheffield.ac.uk/architecture
Age Friendly Environments
Borders and Migration
Community Design and Participation
Design for Climate Change
Design Processes and User Behaviour
Digital Design and Performance
Environmental and Sustainable Design
Histories, Theories, Practices and Politics of Architecture
Lighting
Timber Structures
Urban Design, Development and Resilience

Automatic Control and Systems Engineering
www.sheffield.ac.uk/acse
Complex Optimisation and Decision Making
Industrial Control Systems, System Health Monitoring and Prognostics
Modelling and Analysis of Complex Systems
Neuroimaging, Synthetic Biology and Systems Neuroscience
Non-linear System Identification, Signal and Information Processing
Self-assembling and Swarm Robotics Systems
Self-reconfiguring Autonomous Systems, Distributed Sensing and Control of Multiagent Systems
Smart Cities, Smart Grids, Traffic Modelling, Mobility Protection, Control and Decision Support

Biblical Studies
www.sheffield.ac.uk/siibs
Bible and Ethics
Bible, Sexuality and Gender
Bible and Sexual Violence
Biblical and Quranic Studies
Contextual Biblical Criticism
Embodied Experience in the Bible
History, Historiography and Biblical Studies
Literary Criticism and Cultural Studies
Migration and the Bible
The Origins of Judaism and Christianity
Philosophy of Religion
Supersessionism and Biblical Studies

Biomedical Science
www.sheffield.ac.uk/bms
Cell Biology
Developmental Biology
Pedagogical Research in Biomedical Science
Sensory Neuroscience
Stem Cells and Regenerative Medicine

Chemical and Biological Engineering
www.sheffield.ac.uk/cbe
Biological Engineering
Energy, Environment, Food and Water
Materials and Products
Processes and Systems
Sustainability

Chemistry
www.sheffield.ac.uk/chemistry
Chemical Biology
Polymers, Materials and Nanoscience
Molecular Design and Catalysis
Theory and Light-matter Interactions

Civil and Structural Engineering
www.sheffield.ac.uk/civil
Geotechnical Engineering
Resources, Infrastructure Systems and Built Environments
Structural Engineering and Materials
Water Engineering

Computer Science
www.sheffield.ac.uk/dcs
Complex Systems Modelling
Machine Learning
Natural Language Processing
Organisations, Information and Knowledge Security
Speech, Hearing and Visual Computing
Theory, Algorithms and Verification Testing

Dentistry
www.sheffield.ac.uk/dentalschool
Antimicrobials
Biocompatibility and Tissue Engineering
Bioengineering and Health Technologies
Children and Young People's Oral Health
Custom Prostheses for Surgery
Evaluation of Healthcare Objectives
Infection and Disease
Nerve Injury and Regeneration
Oral Biosciences
Oral Cancer: Diagnosis, Mechanisms and Therapy
Oral Health and Quality of Life
Oral Microbiology
Pain Mechanisms
Person Centred and Population Oral Health
Tissue Engineered Models of Disease: Cancer, Infection and Drug Delivery

East Asian Studies
www.sheffield.ac.uk/seas
Chinese, Japanese and Korean Studies
Cultures and Societies of East Asia
Political Economy of East Asia
International Relations of East Asia

Economics
www.sheffield.ac.uk/economics
Behavioural Economics and Economic Psychology
Econometrics
Firm Productivity, Organisation and Managerial Incentives
Health Economics
Household Finances
Labour and Education Economics
Macroeconomics, Finance and Development
Political Economy

Education
www.sheffield.ac.uk/education
Children, Families, Schools and Learning Communities
Critical Disability Studies and Inclusive Education
Global Education, Higher Education Policy, Pedagogy and Participation
Digital Lives and Literacies
Language Literacies and Communication
Early Childhood Education
Educational and Child Psychology
Social Justice
Intersectionality
EDD Doctorate in Education

Electronic and Electrical Engineering
www.sheffield.ac.uk/eee
Communications
Imaging and Electron Microscopy
Electrical Machines and Drives
Semiconductor Materials and Devices

English
www.sheffield.ac.uk/english
18th and 19th-century Literature
Applied Linguistics and TESOL
Conversation Analysis
Corpus Linguistics
Creative Writing
Critical Discourse Analysis
Dialectology
Discourse Studies
Film
First and Second Language Acquisition
Historical Linguistics
Language Variation and Change
Literary Linguistics
Medieval and Early Modern Language and Literature
Modern and Contemporary Literature
Phonetics and Phonology
Sociolinguistics
Syntax
Theatre and Performance
World Englishes, Pidgin and Creole Languages

Geography
www.sheffield.ac.uk/geography
Culture, Space and Difference
Food, Environment and Sustainability
Geographies of the Global South
Ice and Climate Research
Landscape Dynamics
Social Change and Economic Transformations

Health and Related Research
www.sheffield.ac.uk/scharr
Assistive Technologies
Clinical Trials and Statistical Methods
Decision Modelling / Operational Research
Emergency Care
Global Health
Health Economics
Health Policy
Health Services Research
Health Technology Assessment and Appraisal
Mixed Methods Research
Psychological Services
Public Health

History
www.sheffield.ac.uk/history
Early Modern England and Europe
Global, International and Imperial Modern History
The History of Britain and of Europe from the Nineteenth Century to the Present Day
The History of Enslavement
The History of Pre-Colonial, 19th and 20th-Century America
Late Antique and Medieval History
Medical Humanities
Social, Religious, Cultural, Gender and Political History

Human Communication Sciences
www.sheffield.ac.uk/hcs
Development and Disorders of Speech and Language
Interactional Analyses
Neuroscience of Speech and Language

Infection, Immunity and Cardiovascular Disease

www.sheffield.ac.uk/iicd

Antimicrobial Resistance
Cardiovascular Biomechanics
Cell Biology
Coronary Artery Disease
Dermatology
Experimental Models of Cardiovascular Disease
Gastroenterology
Haemostasis
Immunology and Infectious Diseases
Inflammatory Signalling
Medical Microbiology
Microbial Pathogenicity
Medical Physics
Nephrology
Platelets
Pulmonary Vascular Biology
Radiology
Respiratory Medicine
Vascular Biology

Information School

www.sheffield.ac.uk/is

Chemoinformatics
Digital Societies
Health Informatics
Information Retrieval
Information Systems
Information, Knowledge and Innovation Management
Libraries and Information Society

Journalism Studies

www.sheffield.ac.uk/journalism

Alternative Media and Citizen Journalism
British Tabloid Journalism
Humanitarian Crisis Communication
Journalistic (Un)Freedoms, Journalism Safety and the Issue of Impunity
The Media, Communication and Peacebuilding
Media History
Media Law, Ethics and Regulation
Mediated Identity Narratives
Political Communication, Campaigns and Elections
The Role of News Journalism in Society and Political Regimes Past and Present
Strategic Communication and Public Diplomacy

Landscape Architecture

www.sheffield.ac.uk/landscape

Ecological Design, Green Infrastructure and Urban Greening
Environmental Change and Future Landscapes
Health, Wellbeing and Inclusive Landscapes
Landscape Architecture and Design Theory
Landscape Planning and Natural Resource Management

Languages and Cultures

www.sheffield.ac.uk/slc

Discourse Analysis and Intercultural Communication
Dutch and Luxembourg Studies (Literature, Migration Studies, Multilingualism)
European Thought and Intellectual History
Film and Performance Studies
French and Francophone Studies (Literature, Culture, History, Visual Culture)
Germanic Literary and Cultural Studies (Literature, Culture, Intellectual History)
Linguistics of Hispanic, Germanic and Slavonic Languages
Linguistic Variation, Discrimination and Prejudice
Multilingualism and Multiculturalism
Portuguese and Catalan Studies (Literature, Migration Studies, Linguistics)
Russian and Czech Studies (Literature, Culture, Intellectual History, Linguistics)
Sociology and Gender in Europe
Spanish Literature, Culture and Society (Literature, Sport, History, Politics)
Translation Studies

Law

www.sheffield.ac.uk/law

Corporate and Commercial Law
Criminology, Criminal Justice and Criminal Law
Health Law and Policy
International and European Law
Socio-Legal Studies

Management

www.sheffield.ac.uk/management

Accounting and Financial Management
Cultural and Creative Industries
Entrepreneurship
Environmental Sustainability
Human Resource Management and Organisational Behaviour
International Strategy and Business
Leadership
Logistics and Supply Chain Management
Marketing
Work and Employment
Work Psychology

Materials Science and Engineering

www.sheffield.ac.uk/materials

Advanced Structural Materials
Biomaterials and Tissue Engineering
Functional Materials and Devices
Multiscale Materials Modelling
Nanomaterials and Nanoengineering
Nuclear Engineering

Mathematics and Statistics

www.sheffield.ac.uk/maths

Algebra and Algebraic Geometry
Differential Geometry
Fluid Dynamics
Gravitation and Cosmology
Mathematical Biology and Environment
Number Theory
Probability and Statistics
Solar Physics
Topology and Category Theory

Mechanical Engineering

www.sheffield.ac.uk/mecheng

Biomechanics
Dynamics
Energy
Manufacturing and Design
Solid Mechanics
Thermofluids

Medical Education

www.sheffield.ac.uk/aume

Assessment and Feedback
Clinical and Health Services
Research in General Practice
Health Equity and Social Accountability
Professionalism

Molecular Biology and Biotechnology

www.sheffield.ac.uk/mbb

Biochemistry and Biotechnology
Eukaryotic Cell Biology
Genomics and Nucleic Acids
Microbiology
Plants and Photosynthesis
Structural Biology

Music

www.sheffield.ac.uk/music

Composition
Electronic Music
Ethnomusicology
Music Education, Audiences and Participation
Musicology
Performance
Psychology of Music

Neuroscience

www.sheffield.ac.uk/neuroscience

Bioinformatics
Clinical Neurology
Clinical Neuropsychology
Clinical Neuroscience
Genomic Medicine
Molecular Neuroscience
Neuropathology
Translational Neuropsychology
Translational Neuroscience

Nursing and Midwifery

www.sheffield.ac.uk/snm

Child and Family Health and Wellbeing
Enhancing the Lives of Older People and Their Families
Palliative and End of Life Care

Oncology and Metabolism

www.sheffield.ac.uk/oncology-metabolism

Ageing
Bone Biology
Bone Metabolism
Child Health
Clinical Oncology
Diabetes, Endocrinology and Metabolism
Human Nutrition
Inflammation and Tumour Targeting
Metabolism
Molecular Oncology
Ophthalmology and Orthoptics
Reproductive and Developmental Medicine
Surgical Oncology
Urology

Philosophy

www.sheffield.ac.uk/philosophy

Epistemology, Metaphysics, Philosophical Logic, Aesthetics
Ethics, Gender and Race, Political Philosophy and Philosophy of Law
History of Philosophy
Philosophy of Mind, Language, Psychology and Cognitive Science
Philosophy of Religion

Physics and Astronomy

www.sheffield.ac.uk/physics

2D Materials
Astronomy and Astrophysics
Biological Physics
Inorganic Semiconductor Structures and Devices
Nanotechnology and Materials Physics
Particle Physics and Particle Astrophysics
Photonics
Quantum Information and Devices
Solar Cell Research

Politics

www.sheffield.ac.uk/politics

Comparative Politics
Development
Environmental Politics
Europe
Global Security
Governance and Public Policy
International Relations
Political Economy
Political Sociology
Political Theory and Global Justice

Psychology

www.sheffield.ac.uk/psychology

Clinical Psychology and Psychopathology
Cognition and Cognitive Neuroscience
Computational Neuroscience and Robotics
Developmental Psychology
Neuroscience and Psychobiology
Social and Health Psychology

Sheffield Methods Institute

www.sheffield.ac.uk/smi

Inequality
Social Justice and Inclusion
Mobility and Migration
Participation
Methods and Methodology

Sociological Studies

www.sheffield.ac.uk/socstudies

Ageing and Caring
Digital Society
Family and Childhood
Global, International and Comparative Social Policy
Methods
Migration, Race and Multiculturalism
Science, Technology and Medicine in Society
Surveillance

Urban Studies and Planning

www.sheffield.ac.uk/usp

Environment, Infrastructure and Sustainability
Housing and Real Estate
Planning, People and Place
Urban Inequalities and Social Justice



We can't wait to meet you

Open evenings

Network with students and alumni. Get advice on applying for a PhD at Sheffield. Find out about funding opportunities and learn how your Sheffield PhD experience could help shape your future.

Book your place at www.sheffield.ac.uk/postgraduate/visit

Visit afternoons

Can't make it to an open evening? There are regular postgraduate visit afternoons throughout the year.

www.sheffield.ac.uk/postgraduate/visit/afternoons

Support for overseas students

We realise it's difficult for you to visit our campus in person so we regularly travel overseas to meet with you.

Find out when we're coming to your country at www.sheffield.ac.uk/international





This publication is available in different formats.
To request an alternative format telephone: +44 (0)114 222 1303

All rights reserved. No part of this publication may be reproduced, stored in a retrieval system or transmitted in any form or by any means, electronic, mechanical, photocopying, recording or otherwise without prior permission of the University in writing. "The University of Sheffield", "University of Sheffield", and the University of Sheffield logo are registered trademarks of the University of Sheffield.

The content of our courses is reviewed annually to make sure it's up-to-date and relevant. This is in response to discoveries through our world-leading research, funding changes, professional accreditation requirements, student or employer feedback, outcomes of reviews and variations in staff or student numbers.

We aim to provide accurate and up-to-date information in all of our publications, but – as the PGR Guide is published more than 12 months before the beginning of a course – applicants should always refer to our website for the most up to date information at www.sheffield.ac.uk.

This publication is printed on paper made from ECF wood pulp which is sourced only from managed sustainable forests.

Printed in the UK by Linney Make, part of the Linney Group.

Design and art direction by Human.

Photography by Shaun Bloodworth, Martin Bouchier, Andy Brown, Dimitar Epihov, Ian Gregory, ES Kwon, Marketing Sheffield, The Outdoor City, Dr Aga Nowak, Ian Spooner, Twelve Architects & Jack Hobhouse and Glynn Woods.

Copyright © 2019 The University of Sheffield 202M&C

ISSN 0951-4597