



UCL Undergraduate Preparatory Certificates

Foundation courses for international students
ucl.ac.uk/upc

2021 Entry



| English

Welcome to UCL: London's Global University

UCL (University College London) is a world-leading multidisciplinary university with an international reputation for high-quality research and teaching, being ranked in the top 10 universities worldwide.*

Based in Bloomsbury, central London, UCL's main campus is within walking distance of outstanding academic, social and cultural resources, as well as exceptional sporting facilities and entertainment, giving easy access to the world's number one student city.**

* QS World University Rankings 2021

** QS Best Student Cities 2019



10

- 01 Massachusetts Institute of Technology (MIT)
- 02 Stanford University
- 03 Harvard University
- 04 California Institute of Technology (Caltech)
- 05 University of Oxford
- 06 ETH Zurich – Swiss Federal Institute of Technology
- 07 University of Cambridge
- 08 Imperial College London
- 09 University of Chicago
- 10 UCL***



60

60 academic departments in 11 faculties



01

Number 1 in the UK for research strength in the latest (2014) Research Excellence Framework



1:10

Staff-to-student ratio is 1:10



300

The Students' Union UCL (SU UCL) has more than 300 clubs and societies



17

specialist libraries with more than two million books



150

41,000 students from more than 150 different countries



29

Nobel prize winners



48%

Around 48% of the student population is from overseas

UCL Undergraduate Preparatory Certificates

Overview

UCL Undergraduate Preparatory Certificates (UPC) are intensive and challenging foundation courses for international students whose home qualifications do not allow direct admission to an undergraduate programme.

The UPC provides students with the essential academic and language skills, knowledge and support to progress confidently and smoothly onto an undergraduate degree at UCL or other top UK universities.

There are two undergraduate foundation courses at UCL:

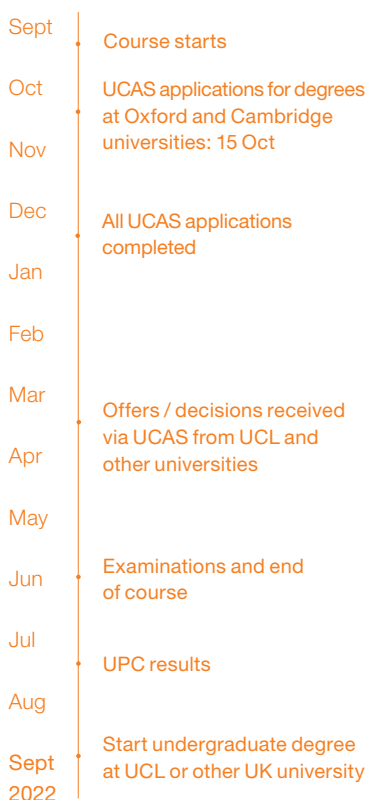
- UCL Undergraduate Preparatory Certificate for Science and Engineering (UPCSE).
- UCL Undergraduate Preparatory Certificate for the Humanities (UPCH).

During one academic year, the courses provide an intensive preparation for the academic challenges of a top UK degree programme.

Academic year

September 2021 – June 2022

Please see our website for course dates ucl.ac.uk/upc



Why study the UPC at UCL?

Unique

UCL is the only UK university featured in the top ten of the QS World University Rankings 2021 to offer its own foundation programme, giving you the opportunity to study towards your target degree at one of the world's best universities.

Teaching quality & individual support

You will be taught by highly qualified UCL academic staff with expertise in teaching international students the skills to succeed at undergraduate level. You will receive personalised one-to-one support and have full access to UCL's extensive academic resources.

Immersion

You will gain valuable experience in the British education system and quickly develop an understanding of the learning style required at UCL, including critical thinking and research, complemented by an active social programme.

Progression in 2019

97%

received UCL or Russell Group university* undergraduate degree offers

86%

received UCL undergraduate degree offers

79%

progressed to a Russell Group university*

52%

progressed to a UCL undergraduate degree

Key facts

33

different nationalities were represented on the course

131

UCL degree programmes guarantee an offer if you are predicted to meet their entry criteria

02

UPC Progression Scholarships are offered each year to the two highest achieving UPC students continuing to a UCL undergraduate degree

Student View



"What I learnt on the UPC helps me significantly in the degree I'm studying right now. As a student who has never studied a lot of biology and chemistry content in English before, the UPC helped make the modules that I study now so much easier to digest."

Name: Jeongmin Lee
Nationality: South Korean
Studied: UPCSE (2019)
Progressed to: Biomedical Sciences BSc at UCL

UPCSE Scholarship winner 2019

*The Russell Group represents 24 leading UK universities. russellgroup.ac.uk

UCL Undergraduate Preparatory Certificates (UPC)

Course details

You will study four modules:

- two compulsory modules
- two optional modules of your choice.

These highly intensive modules rapidly advance your subject knowledge in a range of topics. You will develop critical and analytical skills that are transferable between many disciplines and are vital for successful study at undergraduate degree level.

UPC modules are delivered through lectures, seminars and tutorials, providing an average of 23 UCL class hours* per week, covering:

- practical academic skills
- critical thinking skills
- academic English
- research skills and research projects
- laboratory and practical science skills (UPCSE only)
- LNAT (Law) and STEP (Mathematics) examination preparation (as required)
- design portfolio (UPC for Architecture)
- field trips and personal development opportunities.

You will be continually assessed through regular homework, research projects and exercises, and sit end-of-term exams.

*The UCL class hour is 50 minutes.

Compulsory modules

You will study two compulsory modules:

- Research and Academic Skills
- Academic English

If you have a near native competence in English you can study a Modern Foreign Language instead of Academic English (see below).

Research and Academic Skills

This module develops your critical thinking and research skills.

Individual Research – you will undertake an individual research project in an area which interests and inspires you. This builds your confidence and independence in researching and presenting ideas.

UPCSE students take *Science & Society*, which examines the ethical, social, environmental and technological implications of various scientific issues.

UPCH students take *Academic Research: Approaches & Methods*, which explores fundamental approaches to knowledge in different disciplines. You will be challenged to reflect critically on how different subject areas and methodologies may relate to and inform one another, and how they apply to your own research.

Academic English

The focus is on improving English for academic study. Components include:

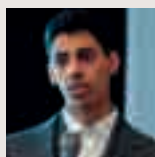
- essay writing
- lecture comprehension and effective note-taking
- academic reading
- speaking skills (seminars and presentations).

Or

A Modern Foreign Language

If appropriate, you can study Arabic, Dutch, French, German, Italian, Japanese, Mandarin, Portuguese or Spanish instead of Academic English. The minimum level of English required for this is an IELTS for UKVI (Academic) score of 7.5 or equivalent.

Student View



“The UPC really helped me to tackle how to do research. It gave me a clear path of what to do and a step-by-step guide into how to be a great researcher in the future.”

Name: Subah Alkhalidi
Nationality: Saudi
Studied: UPCSE (2018)
Progressed to: Mechanical Engineering BEng at UCL

Hear more student views:
ucl.ac.uk/upc/student-views



Optional modules

In addition to the compulsory modules, you will select two optional modules. The optional modules are selected according to the requirements of the undergraduate programme you are aiming for. Please see our guide for selecting optional modules on the website.

UPC applicants wishing to combine UPCH and UPCSE modules should contact the course administrators for advice.

UPCSE

Biology: Biochemistry, cell biology, genetics, DNA technology, physiology, microbiology, ecology and evolution are covered, as is an awareness of scientific methods, developed with practical laboratory sessions.

Chemistry: Inorganic, organic and physical aspects are all covered, in a way that gives strong emphasis to practical work and is designed to provide a firm foundation for undergraduate study.

Mathematics: Provides a rigorous quantitative analytical basis for degree programmes in numerate disciplines, particularly engineering and the physical sciences.

Physics: This calculus-based course covers both classical and modern physics with a rigorous mathematical approach and an emphasis on experimental and scientific writing skills.

Student View



“I chose UCL because I was attracted by the diverse student body and the overall reputation of the institution.

Also, growing up in Tokyo, it was hard for me to imagine myself not in a city. London offers so many different opportunities, so that was very appealing.”

Name: Nanami Tsuchiyama
Nationality: Japanese
Studied: UPCH (2019)
Progressed to: Geography with Qualitative Methods BA at UCL
UPCH Scholarship winner 2019

UPCH

Classical Civilisation: Literature, Philosophy and Politics: Involves the study of some of the most significant and influential drama, philosophy, poetry and historical events of the ancient Greek and Roman worlds, and explores the dialogue between the ancient past and the modern day.

Economics: Examines modern economic activity using conventional principles of micro- and macroeconomics.

Geography and the Built Environment: Considers how social, cultural and economic changes affect people and places around the world, through processes such as globalisation, migration and urbanisation.

Mathematics: Provides a rigorous quantitative analytical basis for degree programmes in numerate disciplines including economics and statistical sciences.

Modern European Culture: Involves the close analysis of important works of art, film and literature of the modern period to increase the understanding of European culture in its historical, social and political dimensions.

Modern European History and Politics: Focuses on the history of Western democracy, politics, government and international relations, exploring the concepts of nationalism, globalisation and state sovereignty.

UPC for Architecture

UPC students aiming for the Architecture BSc degree at UCL will study the UPC for Architecture course. In addition to two optional modules and the compulsory academic English module, all UPC for Architecture students will study the compulsory Visual Studies for Architecture and Academic Research: Approaches and Methods (VSAARAM) module.

The Visual Studies for Architecture (VSA) component of this module is delivered at the UCL Bartlett School of Architecture, providing a unique opportunity to experience first-hand what it means to study Architecture at UCL.

Bartlett tutors will support you in developing and refining your portfolios to support your undergraduate degree applications to the UCL Bartlett School of Architecture and other top UK architecture schools.
ucl.ac.uk/upc/architecture



Entry requirements and application

Am I eligible?

You will:

- be over 16 years old at the start of the course
- typically be a high achiever in a 12-year school system which does not meet the standard required for direct entry to a UCL undergraduate degree.

ucl.ac.uk/prospectus

If you are under the age of 18 at the point of enrolment, you should familiarise yourself with UCL's essential information for under 18s before applying.

ucl.ac.uk/upc/under-18

What are the entry requirements?

Academic requirements – you will need to present excellent grades on school transcripts.

Please see our website for a list of suitable country qualifications for entry onto the UPC and minimum grades required.

ucl.ac.uk/upc/applications

English language requirements – you must hold an IELTS for UKVI (Academic)

Please check the website for our 2021 entry English language requirements.

When can I apply?

Entry onto UCL UPC courses is competitive. Applications for 2021 entry open in November 2020 and should be made as early as possible. Please check the website for relevant application deadlines.

How do I apply?

Applications are made directly to the UCL Centre for Languages & International Education. Applications are made online at: ucl.ac.uk/upc

What documents do I need?

- Fully completed application form - including the personal statement section
- A teacher's reference
- Copies of school transcripts
- An IELTS for UKVI (Academic) – see English language minimum requirements
- Application fee
- A portfolio (for Architecture applicants only) – this should include at least six observational drawings as well as work in other media, such as paintings, collages, 3D and photographs.

Following receipt of a completed application and the application fee, suitable candidates will be contacted regarding UPC entrance tests.

What are the entrance tests?

Suitable applicants will be required to take entrance tests, and, if successful, will be interviewed for the course.

UPCSE: Select two subjects from Biology, Chemistry, Mathematics or Physics. The choice depends on which optional modules you intend to study.

UPCH: Critical Thinking (and Mathematics for applicants selecting Mathematics as an option).

You should be familiar with the relevant sample test(s) prior to application. Sample tests can be taken online at: ucl.ac.uk/upc/tests

Tuition fees

Tuition fees 2021 Entry	
UPCSE:	£21,500
UPCH:	£21,500
UPCSE for Architecture:	£22,500
UPCH for Architecture:	£22,500

Details of other costs associated with the course (e.g. living expenses, field trips and excursions) can be found online. ucl.ac.uk/upc

Accommodation

Accommodation is guaranteed for applicants who have accepted an offer and meet the accommodation application deadline of 31 May 2021.

The fees you pay for your accommodation will vary depending on your needs, the location and facilities. The majority of UCL accommodation is within 10–30 minutes' walk of the main campus.

The following tables show you the range of fees for 2020/21 per week. Fees for 2021/22 will be set in the Spring of 2021.

ucl.ac.uk/accommodation

Self-catered: UCL Student Houses	
Single (including en-suite)	£233.59 - £278.53
Twin	£118.93 - £175.91
One-bed flat	£207.76 - £314.16
Catered: UCL Halls of Residence	
Single (not en-suite)	£192.43 - £230.58
Twin (not en-suite)	£160.79 - £175.91

Undergraduate Preparatory Certificates

UCL Centre for Languages & International Education
University College London
26 Bedford Way,
London,
WC1H 0AP,
UK

+44 (0)20 7679 8664
upc@ucl.ac.uk
ucl.ac.uk/upc

 @uclclie

 ucl clie

Disclaimer

This information is for guidance only. It should not be construed as advice nor relied upon and does not form part of any contract. For more information on UCL Undergraduate Preparatory Certificates, please see our website. ucl.ac.uk/upc