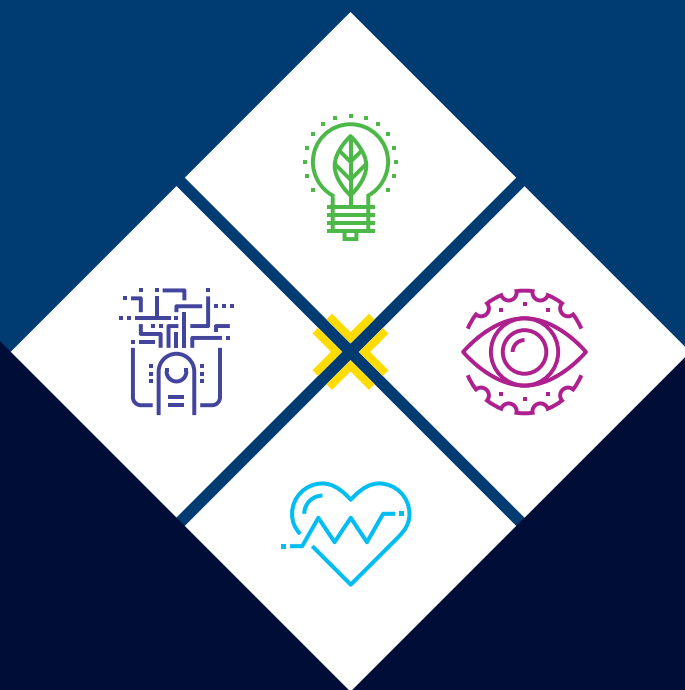


Imperial College
London

Postgraduate study

A PRACTICAL GUIDE TO APPLYING



**Postgraduate courses
2021–2022 entry**



Contents

1	How to use this guide
2	About Imperial
4	Find a Master's course
6	Find a Doctoral course
8	How to apply
12	Selection process
13	Visas and immigration
14	Tuition fees
16	Financial support
18	Preparing for your future career
20	Accommodation
22	Student life
24	Important information



Your learning experience

These are unprecedented times for all of us. This guide presents information about postgraduate study at Imperial for 2021–2022, as it would operate under normal circumstances. We may have to make changes should restrictions still be in place as a result of COVID-19. Please keep an eye on our website for information about potential changes for the 2021–2022 academic year.

► www.imperial.ac.uk/study/covid-19

Find your way to Imperial

Imperial is the only UK university to focus exclusively on **science, engineering, medicine** and **business**. This guide gives an overview of how to join our one-of-a-kind community, based in the heart of London.

Postgraduate study at Imperial covers both Master's and Doctoral courses. We encourage you to explore the full range of options in our four global challenge course guides:

- Discovery and the natural world
- Engineering novel solutions
- Health and wellbeing
- Leading the data revolution

These challenges not only guide the way our researchers work across subject boundaries to tackle some of the world's biggest problems, they're also a blueprint for how we build our community of creative problem solvers: staff and students, learning from and alongside each other.

We're seeking passionate people who can use their skills and talent to make the world a better place – regardless of where they're from. For many of our departments, this means welcoming students from outside their exact area of expertise.

Our global challenge course guides are designed to show you what this means in practice:

► www.imperial.ac.uk/study/pg/courses/global-challenges

If you already know what you want to do, learn more at:

► www.imperial.ac.uk/study/pg/courses





WORLD LEADING RESEARCH, a world class education

Imperial College London is home to a global community of scientists, engineers, medics and business experts who are using their diverse talents to find solutions to some of the world's biggest challenges.

You will learn from and alongside these pioneering researchers, make connections with business and tech innovators, develop your skills with education experts and have the chance to meet top employers.

Our main campus in London puts you at the heart of a city with a creative energy and cultural vibrancy that is reflected in its food, fashion, arts and entertainment, and incredible innovations in the fields of business, science and technology.

Driving progress

Imperial has fuelled a large number of innovations. These pages show just a few of the ways our community has made its mark on the world since the College was founded in 1907.

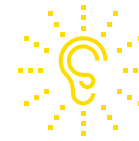
17,000

undergraduate
and postgraduate
students

Four College faculties

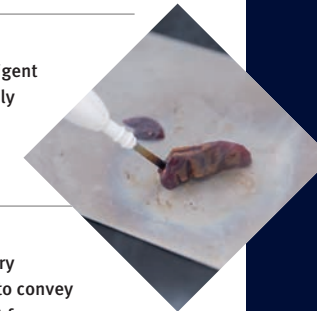
Engineering, Medicine,
Natural Sciences, and
the Business School

▼ The launch of Imperial's COVID-19 Response Team who are working with health services and governments around the world to help plan responses to the pandemic. Find out more about our community's response to the virus: www.imperial.ac.uk/about/covid-19/our-response



◀ The development of one of the world's first cochlear implants to enable deaf people to hear.

▶ The invention of the iKnife, an intelligent knife that can tell surgeons immediately whether the tissue they are cutting is cancerous or not.



▼ A major contribution to the discovery of the Higgs boson, which is believed to convey mass to the fundamental particles that form the building blocks of the universe.



STFC/Imperial College London



◀ The invention of lensless three dimensional photography called holography, and magnetic levitation – technology that allows the Shanghai maglev train to levitate.

The strength of our global reputation and the quality of our staff are two of the most important advantages of an Imperial education.

8th

in the world

QS World University Rankings 2021

1st

Most innovative university
in the UK (2nd in Europe)

Reuters World Top 100 Most Innovative
Universities 2020

Top 10

in the world

Times Higher Education
Most International Universities 2020

1st

in the UK for graduate
employability

The Guardian University Guide 2021



Find a Master's course

Our Master's courses are a mixture of taught, research-based and professional programmes. Most last 12 months full-time, though there are also some part-time and shorter vocational options.

The first step to finding the right Master's course for you is to think about where your interests lie and what you care about.

Interdisciplinarity is one of our greatest strengths so you'll find many examples of our expertise overlapping departments, and collaborative projects taking place across the College.

So when it comes to exploring our courses, we encourage you to remain open minded – you might find courses that interest you in an unexpected area of the College and these may not be in an area that matches your first degree.

In addition, many of our departments welcome applicants whose background is not in the same area of science and engineering, so long as you have a relevant qualification.

1

Choose a subject area you're passionate about

Explore the different ways you can follow your interests in our four global challenge course guides – available to download at:

- ▶ www.imperial.ac.uk/study/pg/courses/global-challenges

Learn more about all our Master's courses online:

- ▶ www.imperial.ac.uk/study/pg/courses

▶ Students working in research facilities at our Silwood Park Campus.



2

Find the right qualification

We offer a range of postgraduate qualifications, including full-time taught and research-orientated courses, MBA courses and part-time professionally-focused certificates and diplomas.

Our qualifications:

- ▶ Master of Science (MSc)
- ▶ Master of Research (MRes)
- ▶ Master of Public Health (MPH)
- ▶ Master of Business Administration (MBA)
- ▶ Postgraduate Certificate (PG Cert)
- ▶ Postgraduate Diploma (PG Dip)

- ▶ www.imperial.ac.uk/study/pg/apply/about-our-degrees

3

Think early about how to fund your studies

Find out more about tuition fees and financial support on pages 14–17 of this guide.

Consider applying for one of our integrated PhDs – a four-year training programme, which usually starts with a one-year MSc or MRes leading straight into a three-year PhD.

See Doctoral courses on page 6.



Remember to ask lots of questions!

Visit the Study website to find out more about upcoming webinars, and other ways to meet us:

- ▶ www.imperial.ac.uk/study/pg/open-days-and-visits



Find a Doctoral course

We offer a number of routes to gaining an advanced research qualification, from traditional PhDs to Professional Doctorates.

We offer three types of Doctoral course:

- ▶ Doctor of Philosophy (PhD)
- ▶ Professional Doctorate (MD(Res))
- ▶ Integrated PhD, available via our Research Council-funded Centres for Doctoral Training (CDTs) and Doctoral Training Partnerships (DTPs)

Each course gives you the chance to explore your chosen field through a programme of in-depth research and the production of a thesis.

The route map here outlines the different Doctoral routes available, whether through a funded research project or through completing your own self-proposed project.

Learn more about Doctoral study on our Study website:

- ▶ www.imperial.ac.uk/study/pg/courses/doctoral-courses

PhD

Doctor of Philosophy: The most common type of Doctoral programme, which normally takes three or four years of full-time study to complete.

MD(Res)

Professional Doctorate: Aimed at professional clinicians, these research qualifications combine taught courses and a supervised research project associated with your current employment.

MRes or MSc + PhD (1 + 3)

Integrated PhD: Combining the depth, rigour and focus of a traditional PhD with a broader training experience for students from a broad range of disciplines.

▶ Students working with drones in the Brahma Vasudevan Multi Terrain Aerial Robotics Arena in our Department of Aeronautics – the facility is the first of its kind in Europe.

If you have a research idea, find a research group whose objectives best match your idea by exploring the websites of our academic departments, multidisciplinary centres and institutes:

- ▶ www.imperial.ac.uk/study/pg/courses/doctoral-courses/phd

Find out if you need to identify a supervisor before you apply.

If you do, you can find details of potential supervisors on our website. Contact them directly with your research proposal. If you don't, you can submit your research proposal when you apply online (see page 8).

If you don't have a research idea, browse our latest funded PhD projects:

- ▶ www.imperial.ac.uk/jobs/career-programmes/phd-vacancies

Contact the project lead to discuss your suitability and eligibility before submitting an application.

If you receive a positive response, you can apply online (see page 8).

Explore our integrated PhD opportunities:

- ▶ www.imperial.ac.uk/study/pg/courses/doctoral-courses/integrated-phd

Apply online (see page 8).



How to apply

Whether you're applying for a Master's or Doctoral course, you will need to apply directly through our online application system.



► Students researching the impact of our western-style diet on inflammation and immunoregulation using zebrafish larvae.

1

Set up your online account

To get started you first need to create an account on the Imperial online application system:

- www.imperial.ac.uk/study/pg/apply

Once you're set up, search for the course you want to apply for and start your application. You don't have to complete the application in one go. You can log back into the system and edit the application as many times as you want before you submit it.

Application deadlines

Most courses don't have a formal closing date but popular courses close once they are full so we encourage you to start your application early.

Applications per place

In 2019–2020 we received an average of **seven applications per place** for postgraduate study, with some departments receiving twice that, so make sure you give yourself plenty of time to do a good job and submit the strongest possible application.

2

Show us that you meet (or are capable of meeting) our entry requirements

To show how you qualify for the course you are applying for, you will need to provide information about the higher qualifications you have achieved or are currently studying.

We can process your application more quickly if you upload scanned copies of the academic transcripts and certificates for the higher education qualifications you already hold when you apply.

If you receive an offer we may ask you to provide evidence of your previous qualifications as part of the conditions of your offer. Where this applies, you must send the evidence to our Admissions team.

- www.imperial.ac.uk/study/pg/apply/after-you-apply/conditions

3

Demonstrate your English language ability

All applicants must show that they have a sufficient level of written and spoken English to meet the demands of our challenging academic environment. You will need to meet either our standard or higher level of English before starting your course. The level required will be included in the entry requirements for the course. As a guide, the requirements for each level are:

	Standard	Higher
IELTS (Academic)	6.5 overall (minimum 6.0 in all elements)	7.0 overall (minimum 6.5 in all elements)
Pearson Academic (PTE)	62 overall (minimum 56 in all elements)	69 overall (minimum 62 in all elements)
TOEFL (iBT)	92 overall (minimum 20 in all elements)	100 overall (minimum 22 in all elements)

IELTS, PTE and IBT are the English language proficiency tests that we accept. There are also other ways to show you meet the relevant standard:

- Successfully pass the College's 6- or 12-week pre-sessional English language programme for Imperial offer holders. This option is not available for applicants to Imperial College Business School.
- Provide evidence of a previous qualification that confirms your English language level.
- Provide evidence that you meet one of our English language exemptions.

You do not necessarily need to have met the relevant English language requirement before you apply. However, if you receive an offer it may form part of your offer conditions so only apply if you are confident you can achieve it.

English language support

During your studies, you can access free academic language and literacy support from our Centre for Academic English.

- www.imperial.ac.uk/study/pg/apply/requirements/english

▼ Faculty of Medicine postgraduates working in the Clinical Skills Laboratory at our Hammersmith Campus.



4

Upload your supporting documents

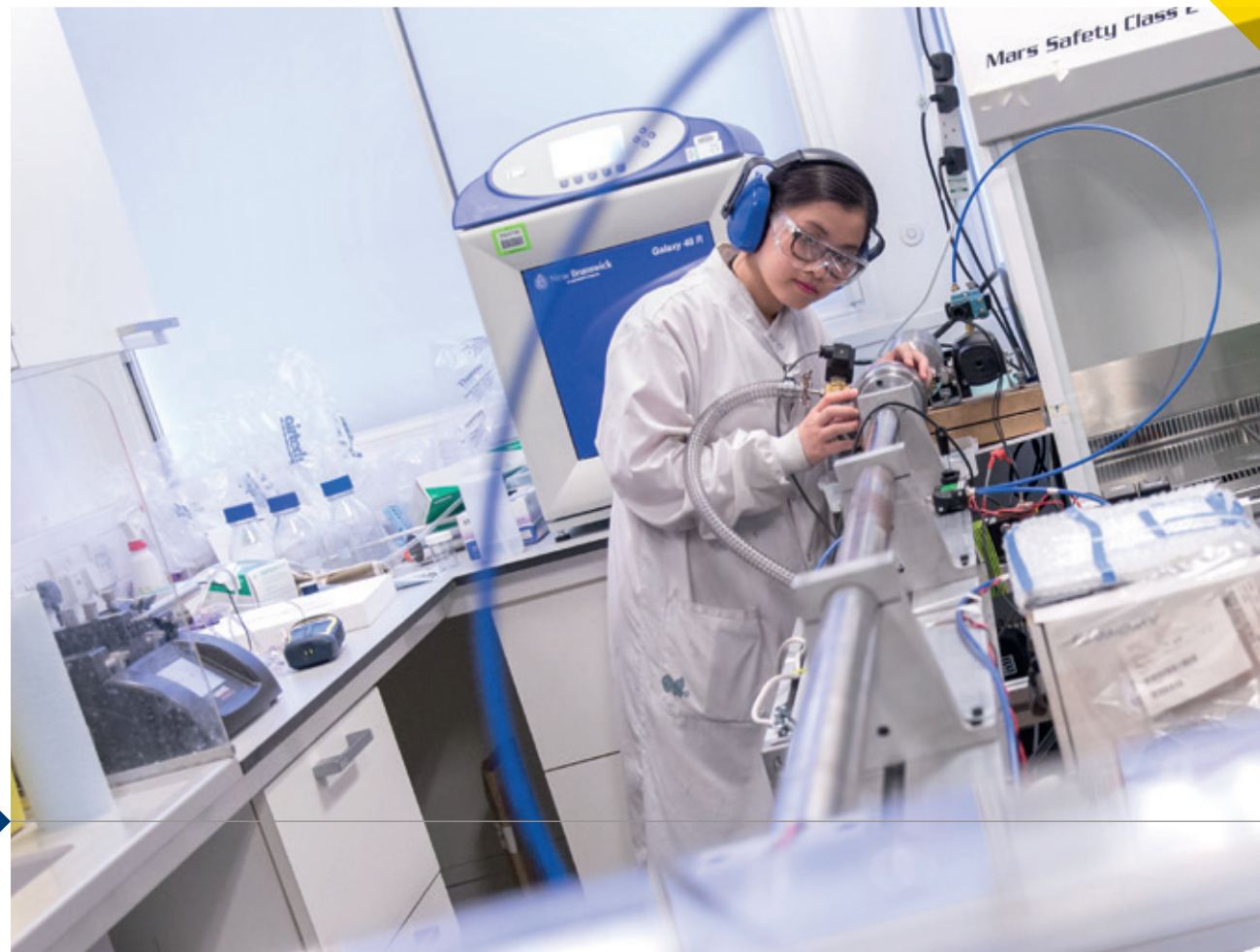
You must upload a copy of your CV. This should provide a summary of your education, experience and achievements and should be no longer than two pages. Read more about creating an effective CV:

- ▶ www.imperial.ac.uk/careers/application-process/cv

Master's applicants

You will need to upload a personal statement, which should include your motivations for applying to Imperial and for your chosen course. Read our top tips for creating a personal statement:

- ▶ www.imperial.ac.uk/careers/exploring-your-options/further-study



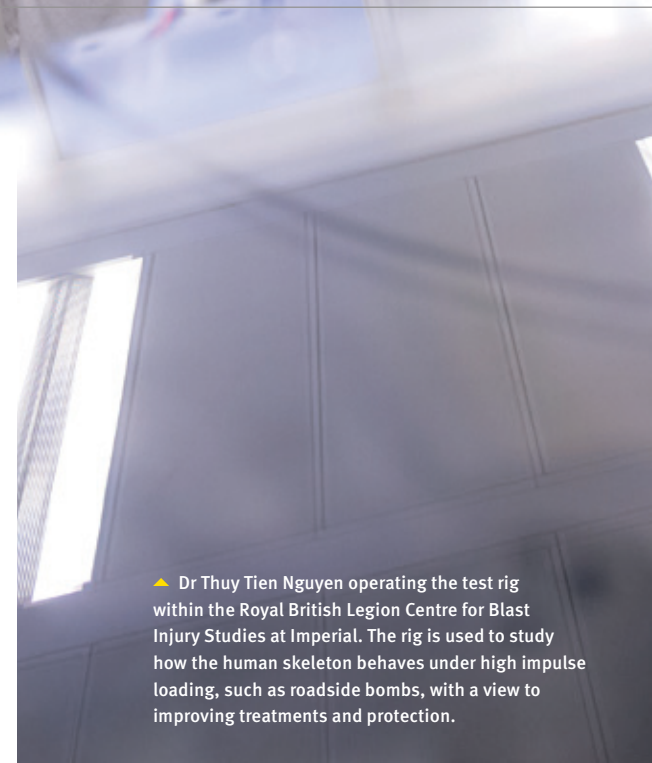
Doctoral applicants

If you are applying for a traditional PhD, you will need to upload a personal statement or a research project proposal which has been agreed with your potential supervisor in advance. This normally includes information such as:

- ▶ why you have chosen your research topic;
- ▶ what research issues you intend to address;
- ▶ initial ideas on the research methodology;
- ▶ references to existing scientific literature (where appropriate) and any relevant previous work that you have carried out.

The research you describe in your proposal may change following further discussions with your supervisor after you start your course. Read advice on writing a good research proposal:

- ▶ www.findaphd.com/advice/finding/writing-phd-research-proposal.aspx



▶ Dr Thuy Tien Nguyen operating the test rig within the Royal British Legion Centre for Blast Injury Studies at Imperial. The rig is used to study how the human skeleton behaves under high impulse loading, such as roadside bombs, with a view to improving treatments and protection.

5

Provide details of your referees

You should provide the names of two people who can provide an academic reference in support of your application. An academic reference could be from:

- ▶ your personal tutor;
- ▶ your thesis supervisor; or
- ▶ your line manager in a research group.

One academic and one relevant professional reference may be acceptable – contact Admissions for confirmation before you apply:

- ▶ www.imperial.ac.uk/study/pg/apply/contact

6

Completing and tracking your application

The Admissions team need both your completed application form and **all** the supporting documents. If documents are missing, this will delay your application process.

You will be able to track your application through our **online application system** and accept your offer if you are successful.



Selection process

In the selection process, we consider all elements of your application equally.

The ideal candidate should demonstrate a balance between strong academic grades, good references, a passion for the subject they have applied for and the potential to add value to the Imperial community.

Individual departments may also look for things like employability – particularly Imperial College Business School – and work experience. Where this is relevant, it will be included in the entry requirements for the course and you should make sure you cover it in your personal statement.

Interview

Master's applicants may need to take part in an interview as part of the selection process. Where this applies, the department you have applied to will contact you with more information.

Interviews are also a required part of the selection process for Doctoral applicants.

Admissions tests

Only Imperial College Business School currently uses an admissions test as part of their postgraduate selection process.

A GMAT score of at least 600 is required for the full-time MBA course. Scores in the 90th percentile in GMAT or GRE are required for the Doctoral programme. Scores of at least 600 are recommended in GMAT or GRE for MSc International Management. GMAT is not required for other Business School courses but a good score will support your application.

- ▶ www.ets.org/gre (GRE General Test)
- ▶ www.mba.com/global (GMAT)



Visas and immigration

Most non-UK nationals starting a course in 2021 will need to apply for a Student Visa to study at Imperial.

Confirmation of Acceptance for Study (CAS)

The earliest you can apply for a Student Visa is six months before you start your course. You will need to enter a reference number called a CAS on your visa application. If your application is successful, our Admissions team will send you your CAS number once you have met all of your offer conditions, including paying a deposit.

Academic Technology Approval Scheme (ATAS)

The requirement for an ATAS certificate applies to all students who are nationals of countries outside the European Economic Area (EEA) and Switzerland, and who are applying for a postgraduate course in certain sensitive subjects.

If you need to obtain an ATAS certificate, we will specify this in your offer conditions if your application to study is successful. You can apply for an ATAS certificate up to nine months before the start date of your course. This certificate is valid for six months from the date of issue.

The Entry Clearance Officer (ECO) will need to see your ATAS certificate as part of your visa application.

- ▶ www.gov.uk/guidance/academic-technology-approval-scheme

Working while you study

Students who require a Student Visa may only undertake paid work for a maximum of 20 hours in any one week during term-time. You cannot average this over a longer period. Other working restrictions also apply.

Imperial and the EU

Find the latest information and frequently asked questions relating to the UK's decision to leave the EU on our website:

- ▶ www.imperial.ac.uk/about/imperial-and-the-european-union

Our International Student Support team can provide specialist advice on a wide range of visa and immigration issues, before and during your time at Imperial.

- ▶ www.imperial.ac.uk/study/visas



Tuition fees

The fees for all of our postgraduate courses are set by the College and vary by course.

If your course lasts for more than one year, you should expect and budget for your tuition fee increasing every year by an amount linked to inflation.



Fee status – Home or Overseas?

There are currently two rates of tuition: Home and Overseas. Which rate you pay is determined by your fee status. We assess this after you apply using regulations provided by the UK government. The UK government has confirmed that EU, EEA and Swiss students will be classified as Overseas students starting from the 2021–2022 academic year. However, exemptions apply which may mean you can still be classified as a Home student so please check your fee status before making a decision.

► www.imperial.ac.uk/study/pg/apply/fees/fee-status

All applicants

Non-refundable application fees apply for all our courses. See our Study website for details.

► www.imperial.ac.uk/study/pg/courses

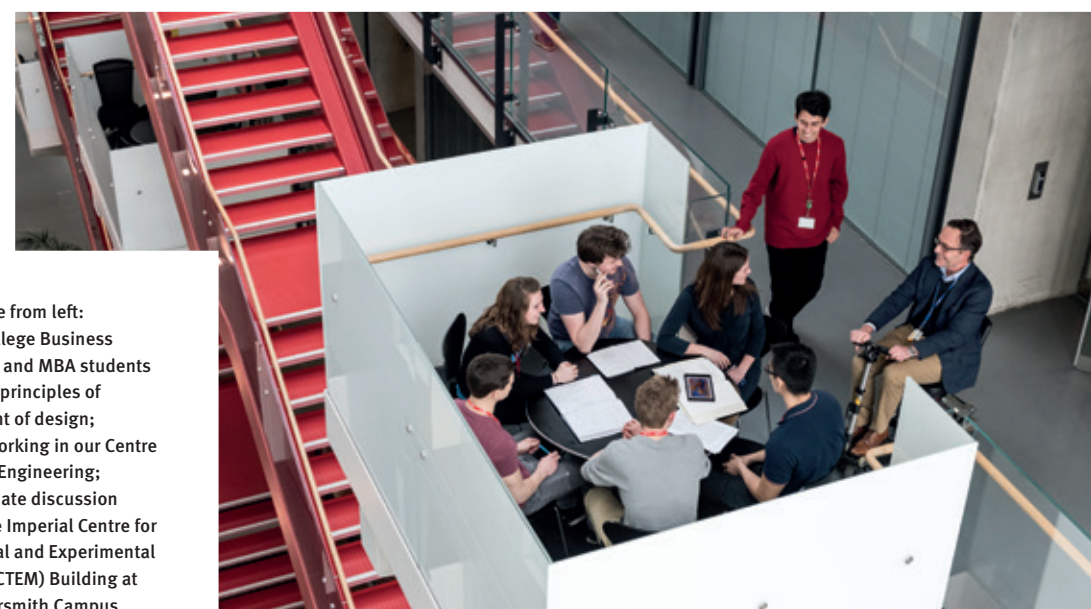
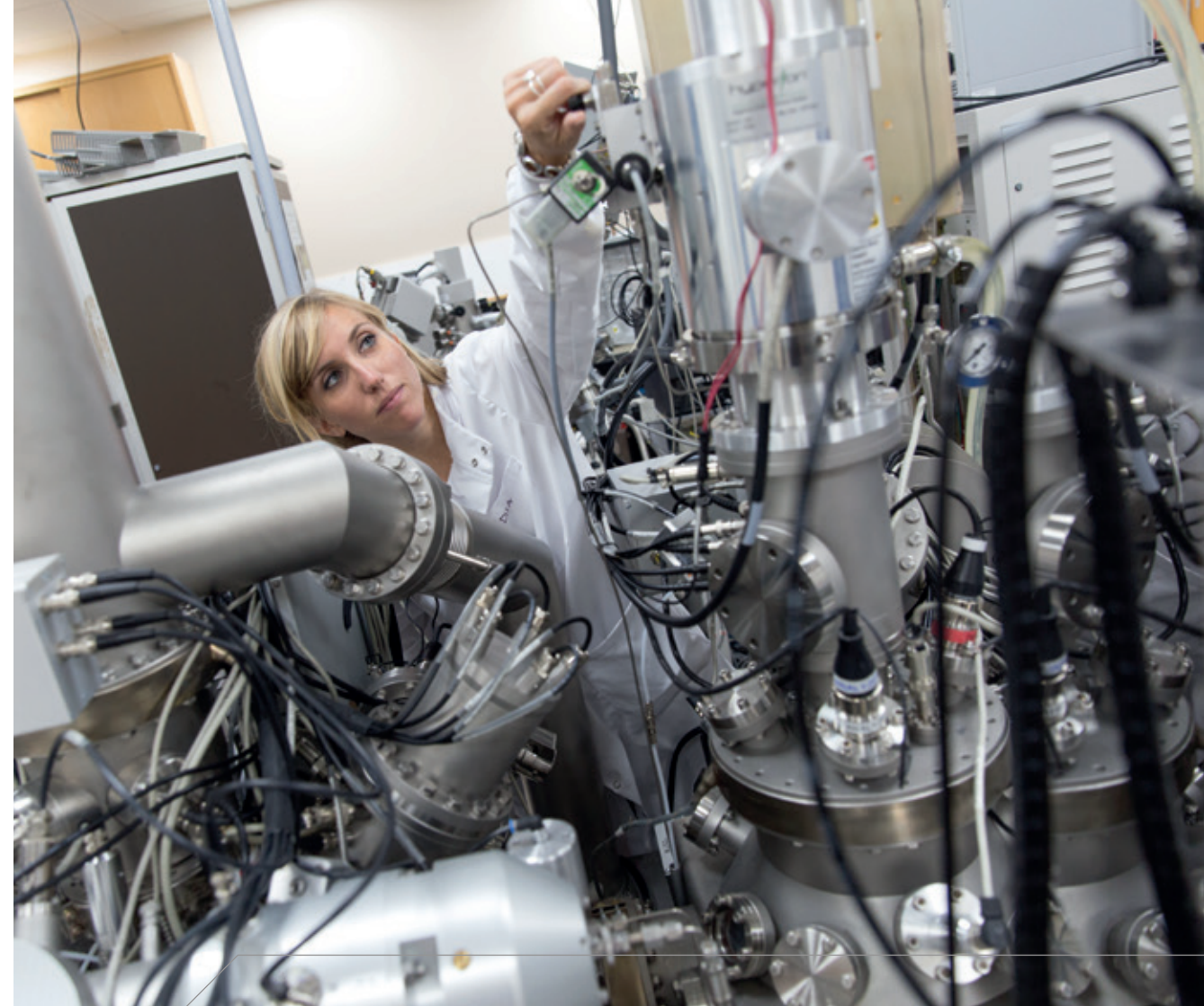
For Master's courses

You can find the fee for all of our Master's courses on our Study website, above. If you receive an offer, you may need to pay a deposit to secure your place, which is normally 10% of the first-year course fee. We deduct the deposit from the invoice for your first-year fee.

For Doctoral courses

See our Study website for fee information – you do not need to pay a deposit:

► www.imperial.ac.uk/study/pg/fees-and-funding/tuition-fees



▼ Clockwise from left:
Imperial College Business School MSc and MBA students explore the principles of management of design;
a student working in our Centre for Nuclear Engineering;
a postgraduate discussion group in the Imperial Centre for Translational and Experimental Medicine (ICTEM) Building at our Hammersmith Campus.



Financial support

We recommend budgeting for student life well in advance to make sure that you have the funds to get the most out of your time at Imperial.

Living costs

The following table is a rough guide* to the amount that you can expect to spend to live in relative comfort at Imperial, excluding your tuition fees.

	Weekly	52 weeks
Accommodation and utilities	£186.72	£9,709.44
Food	£62.52	£3,251.04
Travel	£29.60	£1,184 [†]
Personal and leisure	£46.67	£2,426.84
Total	£325.51	£16,571.32

► www.imperial.ac.uk/study/pg/fees-and-funding/managing-your-money

International students

Students applying for a Student Visa for study in London must prove to the Home Office that they can cover their living costs for up to a maximum of nine months – currently set at £1,265 per month.

* Actual costs will vary according to your lifestyle and may be lower.

† Zones 1–3 with 18+ Student Oyster card. 52-week cost is based on the cost of an annual travelcard.

Sources of funding

Funding from Imperial

Scholarships

We offer a wide range of scholarships, including 50 President's PhD Scholarships each year covering tuition fees and an annual contribution to living costs. We also offer sports scholarships for Master's or Doctoral students who are aspiring to compete or who already compete at a national or international level.

Use our online search tool to find Master's and Doctoral scholarships you may be eligible for:

► www.imperial.ac.uk/study/pg/fees-and-funding/scholarships

Fully-funded PhD projects

Known as studentships, these projects are available across our academic departments. Search for the latest opportunities on our Jobs site:

► www.imperial.ac.uk/jobs/career-programmes/phd-vacancies

Other sources of funding

External scholarships

A number of external organisations offer scholarships to Imperial Master's and Doctoral students to help them successfully complete their studies.

► www.imperial.ac.uk/study/pg/fees-and-funding/scholarships/further-funding-opportunities/external

Charities and Trusts

Use the Alternative Guide to Postgraduate Funding to search for funding for Master's and Doctoral study from charities and trusts.

► www.imperial.ac.uk/study/pg/alternative-guide-to-funding

Teaching opportunities

Doctoral students can explore opportunities to earn extra money as a Graduate Teaching Assistant (GTA) within their department.

Funding from the UK government

Master's and Doctoral loans

Students from England who meet certain criteria (age, course and nationality or residency status), can apply for a Master's or Doctoral loan from the UK government towards their postgraduate studies.

The loan amounts for 2021–2022 have not yet been confirmed by the government. As a guide, in 2020–2021, they were £11,222 for the Master's loan and £26,445 for a Doctoral loan. Both loans are paid in regular installments throughout your course.

Funding for loans is different if you normally live in Scotland, Wales or Northern Ireland.

► www.imperial.ac.uk/study/pg/fees-and-funding/loans

UK Research Council 1 + 3 studentships

Imperial offers a limited number of UK Research Council-funded studentships through a new style of PhD training known as a 1 + 3 or integrated PhD (see page 6). These are available via:

Doctoral Training Partnerships (DTP), which are allocated to different Imperial departments and may be used to fund a broad range of projects.

Centres for Doctoral Training (CDT), which are more focused than DTPs and recruit students for research in target areas.

Funding is normally limited to Home students who have been resident in the UK for the previous three years. Some CDTs may consider self-funded Overseas students for non-funded projects. Enquire directly to the CDT for details.

► www.imperial.ac.uk/study/pg/courses/doctoral-courses/integrated-phd



PREPARING FOR your future career

Whatever your career goals, we can help you plan your next steps and connect you to advice, training, facilities and initiatives to turn your plans into reality.

Support for entrepreneurs

We're passionate about inspiring the next generation of entrepreneurs and our Enterprise Lab and Advanced Hackspace offer state-of-the-art spaces for building prototypes or co-working. They also provide support for aspiring entrepreneurs including ideas surgeries and mentoring, skills-building programmes, guest speakers, and competitions for funding.

- ▶ www.imperialenterpriselab.com and www.imperial.ac.uk/advanced-hackspace

Professional development

Separate programmes for Master's and Doctoral students cover a wide range of free training courses, such as interview preparation, note taking, writing a literature review, networking, presentation skills and project management.

- ▶ www.imperial.ac.uk/study/pg/graduate-school/professional-skills

Expert careers advice

All students have access to support, advice and skills training from the moment they start at the College and after they graduate.

- ▶ www.imperial.ac.uk/careers and www.imperial.ac.uk/business-school/programmes/career-service

Jobs and careers fairs

The Careers Service publishes around 6,500 vacancies a year through its online vacancy service, JobsLive. It also runs a rolling programme of employer events where Imperial students can meet recruiters and find out more about opportunities in different organisations.

- ▶ www.imperial.ac.uk/careers/opportunities

Alumni mentoring

PhD students can take advantage of our alumni mentoring scheme to gain first-hand insight into different professions. Our 200,000-strong community of former students represent a huge range of industries across the globe.

- ▶ www.imperial.ac.uk/careers/opportunities/networking/mentoring

- ▶ From top: A skills seminar in our Careers Service; students in the Advanced Hackspace; a student speaking to an employer at an on-campus careers fair – one of nine held each year.



Where could an Imperial degree take you? Our postgraduates launch global business ventures, shape public health policy and expand our knowledge of the universe. Here are just a few of them:

▶ **Rishi Nalin Kumar** (PhD Mathematics Research 2017) is the founder of Decide Together, a data science consultancy based in London, where he helps large companies to scale their data science practices. Rishi previously worked as the Data Science Practice Lead for Spotify where he focused on analysing user behaviours to develop more personalised features.

▶ **Roma Agrawal** (MSc General Structural Engineering 2005) spent six years working on The Shard, the tallest building in Western Europe, to design its foundations and iconic spire. Roma is also the author of *Built*, a collection of stories about some of the world's most famous buildings.

▶ **Dr Jake Dunning** (PhD Clinical Medicine Research 2013) is a consultant in infectious diseases for Public Health England. He's responsible for conducting outbreak research and ensuring that health services can identify and safely manage diseases such as Ebola, influenza and Zika.

▶ **Christina Lefkothea Tatli** (MSc Business Analytics 2017) chose her Master's course after recognising that big data is becoming an effective basis of competition in almost every industry. It proved a wise decision – she now works as a Data Scientist for Deliveroo.

Want to know more?

Delve into the data about what our graduates do on our Careers website:

- ▶ www.imperial.ac.uk/careers/exploring-your-options/destinations/postgraduates



Accommodation

Accommodation will likely account for your biggest living cost in London. Don't worry if you don't know where to start, we can offer you lots of help – from advice on setting a realistic budget, to a contract checking service for students renting in the private sector.

Private accommodation

London has a wide range of privately rented properties, including shared houses, flats and studio apartments.

If you're joining the College in late September, a good time to start looking for a place to live is between late June and August. The majority of properties are advertised no more than one to two months before they are available.

Learn more about popular areas for Imperial students and find guidance about average weekly rents in our area guide:

- ▶ www.imperial.ac.uk/accommodation/private-accommodation/area

Property search website

Imperial has its own property search website called Imperial Home Solutions. You can use it to find properties and connect with other Imperial students who are looking for somewhere to live.

- ▶ www.imperialhomesolutions.co.uk



Postgraduate halls of residence

Imperial's postgraduate accommodation, GradPad, offers two halls exclusively for postgraduate students at Imperial and other London universities:

- ▶ GradPad Griffon Studios – Battersea
- ▶ GradPad Wood Lane Studios – White City

Learn more, and find prices, facilities and how to book on the GradPad website:

- ▶ www.gradpadlondon.com

Students studying at our Silwood Park Campus in Ascot can choose from single and couples accommodation in five on-site halls of residence:

- ▶ www.imperial.ac.uk/accommodation/halls/pg/silwood-park



▶ Clockwise from left: A student studying in a GradPad bedroom; a GradPad studio room; on-site halls of residence at Silwood Park Campus; a study bedroom at Silwood Park.



Student life

Being a student in London is unlike studying anywhere else in the UK, from the cultural vibrancy felt across the city, to its balance of the very old and the strikingly new.

London is renowned as a centre for creativity and free thinking, with a cultural vibrancy that is reflected in every aspect of life in the capital: food, fashion, arts, exhibitions, shops and a nightlife unrivalled in the UK.

The higher living costs associated with life in the UK's capital is offset by its power to connect you to some of the world's biggest employers. London's comprehensive transport system puts this job market, with its comparatively higher salaries, within easy reach – and with a 30% discount using a Student Oyster photocard.

Student activities

Our main campus in South Kensington is home to a diverse programme of student activities, including over 380 student-led clubs, societies and projects and a volunteer scheme with opportunities both in the UK and abroad.

Our on-site sports centre, Ethos, supports a busy recreational sports programme covering fitness classes, taster sessions, intra-mural leagues and individual activities such as climbing lessons and martial arts classes.

Over 100 Imperial sports teams also compete in the UK-wide inter-university league (BUCS).

1st

London named the best student city in the world

QS Best Student Cities 2019

Beyond South Kensington

We have a number of medical teaching and research campuses, based around leading London hospitals, including Hammersmith, St Mary's at Paddington and the Royal Brompton in Chelsea.

Our major new White City Campus in West London is purpose-built to foster innovation and entrepreneurship by bringing together world class researchers, students, businesses and academic partners to address the problems society most needs to solve.

Beyond London, students at our Silwood Park Campus in Ascot enjoy on-site accommodation (see page 20), state-of-the-art facilities and a range of natural habitats (woodland, streams, a lake, orchard and grassland) to support their studies in ecology, conservation and evolutionary biology.

► www.imperial.ac.uk/visit/campuses



▲ From top: Imperial student volunteers working at a community-run farm in London; our boating society recruiting for new members at our annual Welcome Fair during Welcome Season.



► Imperial College Netball is one of around 90 sports clubs within Imperial College Union's 380+ student-run activities.

Academic and wellbeing support

We offer a range of academic, personal and wellbeing resources to ensure you feel supported throughout your Imperial experience, including:

- departmental pastoral networks
- Disability Advisory Service for students with specific learning difficulties, enduring mental and physical health conditions, Autistic Spectrum conditions, and sensory and physical impairments
- on-site Health Centre, Dental Surgery and a Counselling and Mental Health Advice Service
- an independent Student Advice Centre
- a multi-faith Chaplaincy
- a visa and immigration advice service within our International Student Support team
- a Centre for Academic English, offering free academic language and literacy support

► www.imperial.ac.uk/student-support-zone



Important information

Information contained in this guide

This guide was published in September 2020 and contains general information relevant to researching postgraduate course options at Imperial for courses starting in the academic year 2021–2022. We make every effort to ensure that the information is correct at the time of going to press. However, it may be necessary for the College to make changes to study options and services described in this guide following publication.

If we do so, we will try to draw them to your attention, but we are not always aware who will have seen our publications or visited our website. To make an informed decision based on the latest information available, you must check our Study website before finalising your application and after submitting it:

► www.imperial.ac.uk/study/pg

You can also find our general policy on course changes on our website:

► www.imperial.ac.uk/study/pg/apply/about-our-degrees/potential-course-changes

Changes to our courses

For courses starting in the 2021–2022 academic year, we are revising our taught course and assessment structures with the aim of introducing a standardised modular structure and enhanced degree provision across the College. This will include changes to academic and examination regulations for all taught Master's courses. These changes are designed to enhance your learning experience and ensure you develop a range of skills that employers value. For the latest information about our Master's courses, please refer to our Study website:

► www.imperial.ac.uk/study/pg/courses

Imperial and the EU

Our website for prospective students from the EU/EEA includes the latest information on any changes to fees, funding and visa requirements following the UK's decision to leave the EU.

► www.imperial.ac.uk/about/imperial-and-the-european-union

Tuition fees and extra course costs

The fees for our postgraduate courses are set by the College and vary by course. For courses lasting more than one year, the fee beyond the first year will increase by an amount linked to inflation unless otherwise specified. The UK government has confirmed that EU students starting university in 2021–2022 will pay the Overseas rate of tuition. Some courses may involve extra costs that are not covered by tuition fees. Where applicable, this is explained on our course pages.

► www.imperial.ac.uk/study/pg/fees-and-funding/tuition-fees

Payment terms

Special payment terms apply to our Master's courses. You may be required to pay a deposit as part of your application, unless you meet one of our conditions for exemption. If applicable, this will be a condition of your offer of a place at the College; failure to pay the deposit may result in your offer being withdrawn. Unless specified otherwise, the deposit will be 10% of the tuition fee for the year of admission. See our website for more information, before you apply:

► www.imperial.ac.uk/study/pg/fees-and-funding/tuition-fees/payment-terms/postgraduates

Terms and conditions

All Imperial students are required to comply with the full terms and conditions and regulations of the College:

► www.imperial.ac.uk/students/terms-and-conditions



Discover Imperial

Find out more about the College before you apply and get to know us better:



Chat to us live

Chat to staff and students live through our regular webinar series to find out more about the admissions process and life at Imperial.

► www.imperial.ac.uk/study/pg/open-days-and-visits/other-ways-to-meet-us

Chat to our students

Ask your questions about postgraduate study at Imperial to current students on Unibuddy.

► www.imperial.ac.uk/study/chat-to-our-students

Watch videos

Our YouTube channel is bursting with videos about Imperial student life.

► youtube.com/imperialcollegevideo

Download our course guides

Our four global challenge course guides are designed to help you explore our study options by theme:

► www.imperial.ac.uk/study/pg/courses/global-challenges

Virtual tour: Imperial360

Visit our virtual tour website: Imperial360 to explore our main campus in South Kensington.

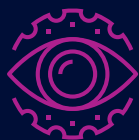
► 360-visit.imperial.ac.uk



Imperial College London



**Discovery and
the natural world**



**Engineering
novel solutions**




**Health and
wellbeing**



**Leading the
data revolution**

 [imperialcollegelondon](https://www.facebook.com/imperialcollegelondon)

 [@imperialcollege](https://twitter.com/imperialcollege)

 [imperialcollege](https://www.instagram.com/imperialcollege)

Imperial College London
South Kensington Campus
London SW7 2AZ

www.imperial.ac.uk/study/pg/courses